

ELEVATE & CIWQA



University of Colorado

Boulder | Colorado Springs | Denver | Anschutz Medical Campus

Agenda

- **Overview**
- Connecting to CIWQA
- Table changes
- What to expect in November



Overview

- Change is coming... Elevate Project
 - CIWQA
 - New Tables
 - Fields removed

ELEVATE

- Learn how Elevate is changing the way you work:
www.cu.edu/Elevate



University of Colorado

Boulder | Colorado Springs | Denver | Anschutz Medical Campus

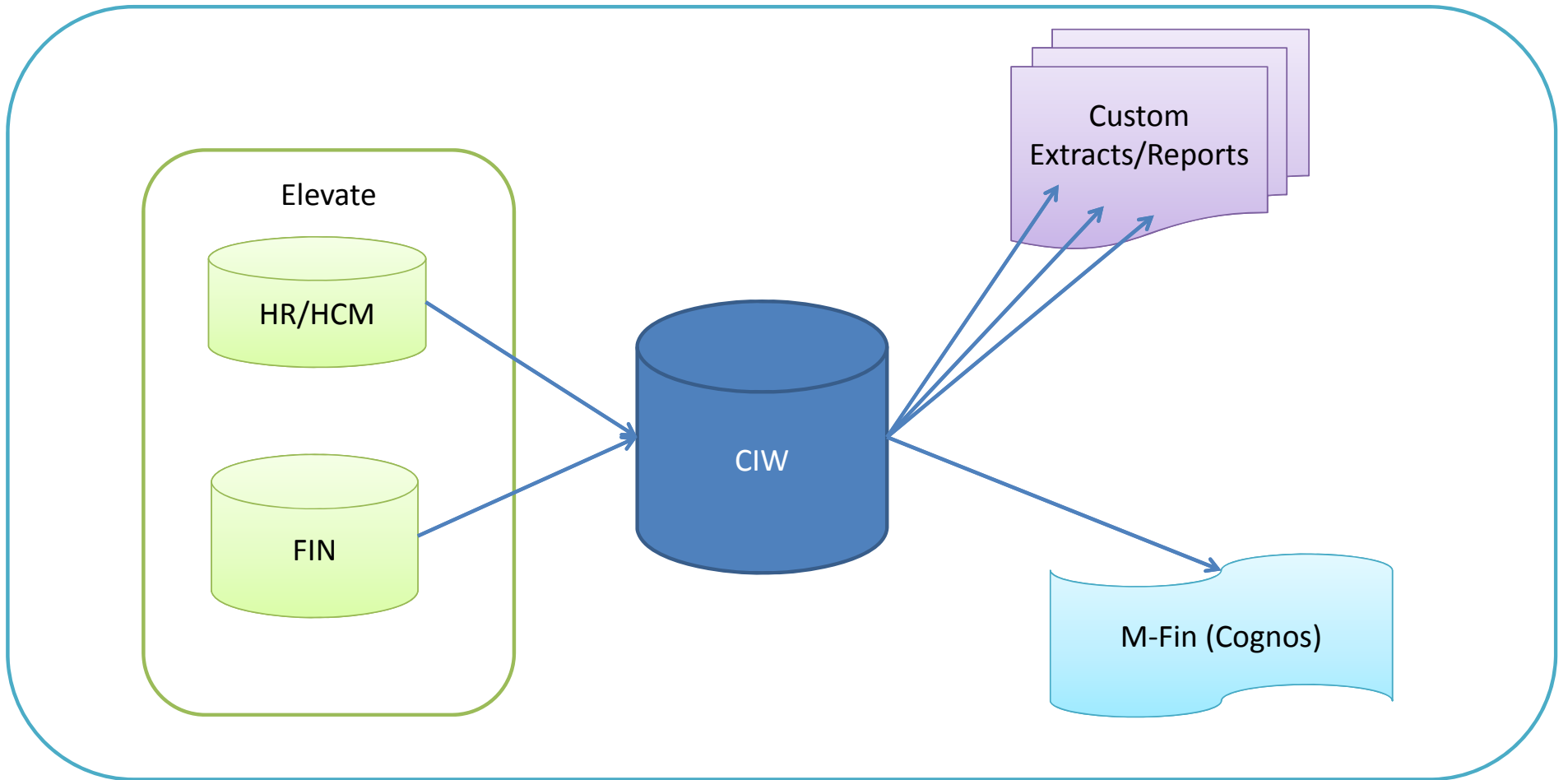
Overview

- What this means for YOU...
 - Use CIWQA
 - Adjust Reports
 - Adjust custom systems with direct access
 - TNSNames File
 - Use m-FIN reports (optional)



University of Colorado

Boulder | Colorado Springs | Denver | Anschutz Medical Campus



Overview

- Resources
 - “Crosswalk” table documentation
 - Webinars & Audio recordings
 - irmhelp@cu.edu
 - Websites with information
 - www.cu.edu/irm
 - www.cu.edu/Elevate
 - www.cu.edu/elevate-ciw (includes Frequently Asked Questions)



University of Colorado

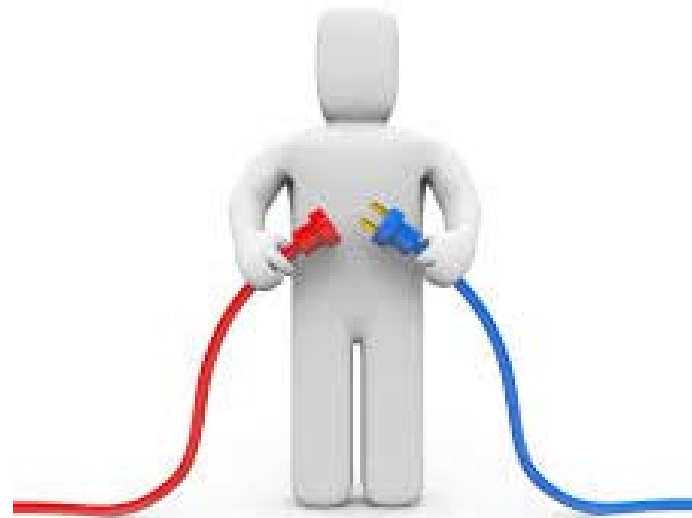
Boulder | Colorado Springs | Denver | Anschutz Medical Campus

Overview



Agenda

- Overview
- **Connecting to CIWQA**
- Table changes
- What to expect in November



University of Colorado

Boulder | Colorado Springs | Denver | Anschutz Medical Campus

Connecting to CIWQA

- You will need...
 - 1) Username and Password
 - 2) Configure your computer



University of Colorado

Boulder | Colorado Springs | Denver | Anschutz Medical Campus

Connecting to CIWQA

- You will need...
 - 1) Username and Password

Connecting to CIWQA

- You will need...

- 1) Username and Password

- Username is NOT your campus login, but ends with CIW...

X00270CIW

...If you have both of these in prod, the old format will not work.

LAST000002CIW

- Set **CIWQA** password here: https://oid.qa.cu.edu/self_service/authenticate
- Set **PROD** password here: https://oid.prod.cu.edu/self_service/authenticate



University of Colorado

Boulder | Colorado Springs | Denver | Anschutz Medical Campus

Connecting to CIWQA

- You will need...
 - 1) Username and Password
 - 2) Configure your computer
 - You need the Oracle Client (*...and probably do have one already.*)
 - 11g, 10c, 12c, 9i
 - Update your local TNSNames file in
`ORACLE_HOME\network\admin`
`tnsnames.ora`



Connecting to CIWQA

- What is the `tnsnames.ora` File?
 - It is a database configuration file.
 - The file may contain one or more alias service names.
 - CIW, CIWQA, Etc...
 - Each alias maps to a database network address.



Step by Step

- [tnsnames StepByStep.docx](#)



University of Colorado

Boulder | Colorado Springs | Denver | Anschutz Medical Campus

Connecting to CIWQA

- How to find **your** tnsnames.ora File
 - [TNSPing from the command line](#)

...or...

- Oracle Universal Installer

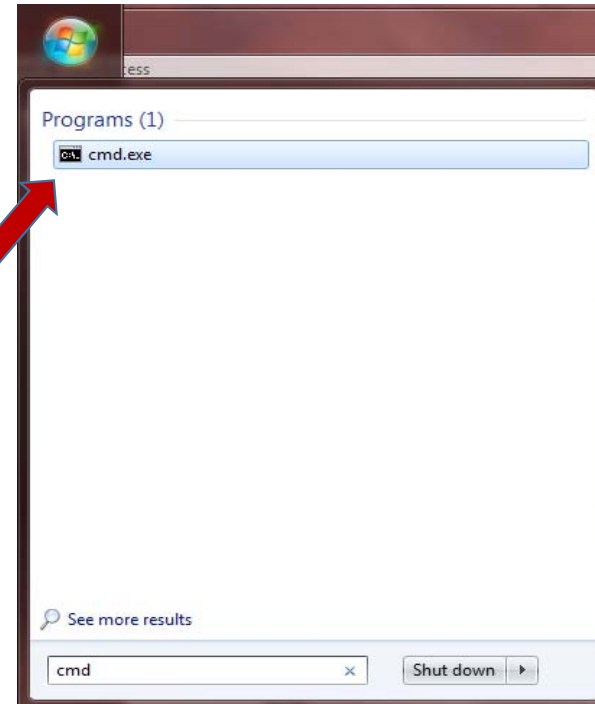


University of Colorado

Boulder | Colorado Springs | Denver | Anschutz Medical Campus

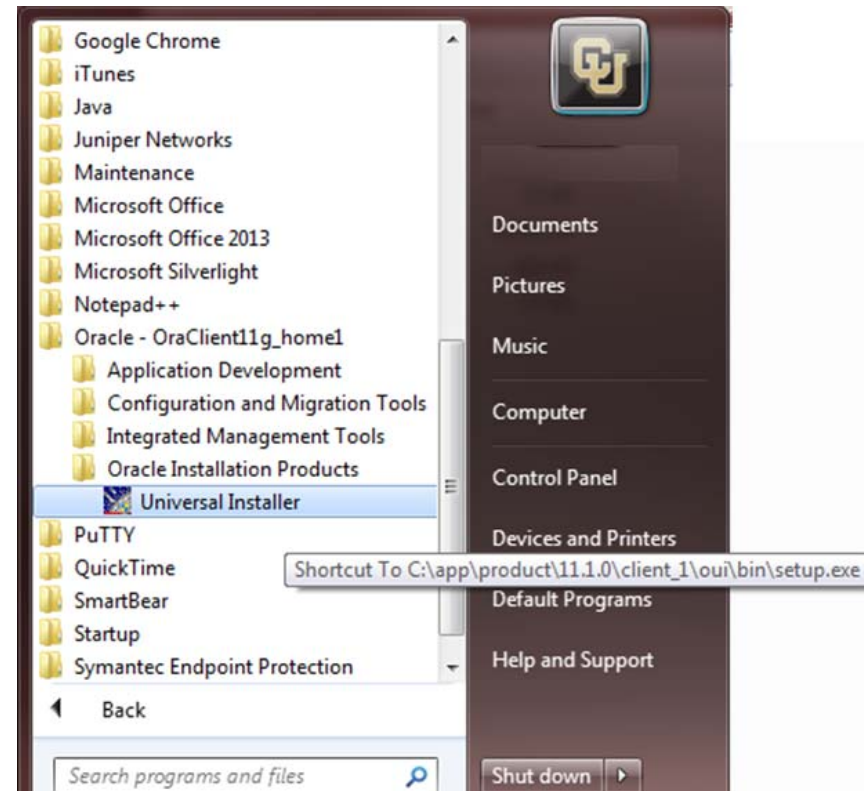
Connecting to CIWQA

- **TNSPing from the command line**
 - Type “cmd” at the start menu.
 - Click the cmd.exe program.



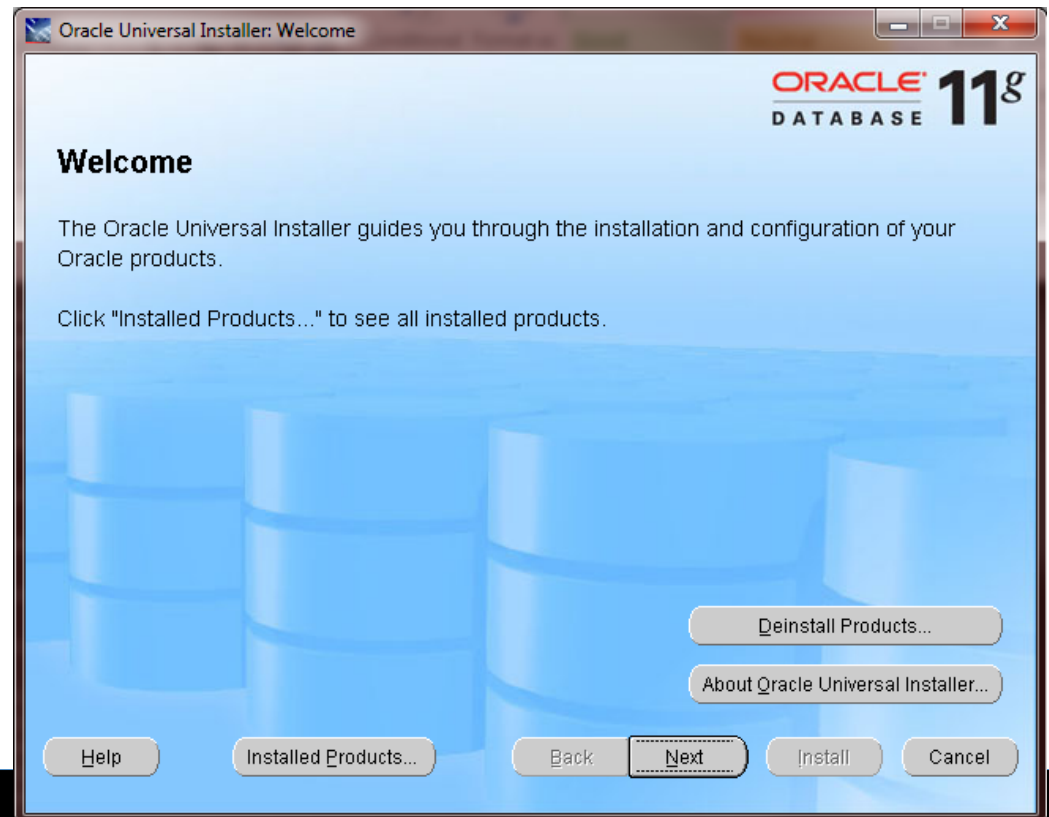
Connecting to CIWQA

- **Oracle Universal Installer**
- Navigate to:
 - Oracle Installation Products, Universal Installer



Connecting to CIWQA

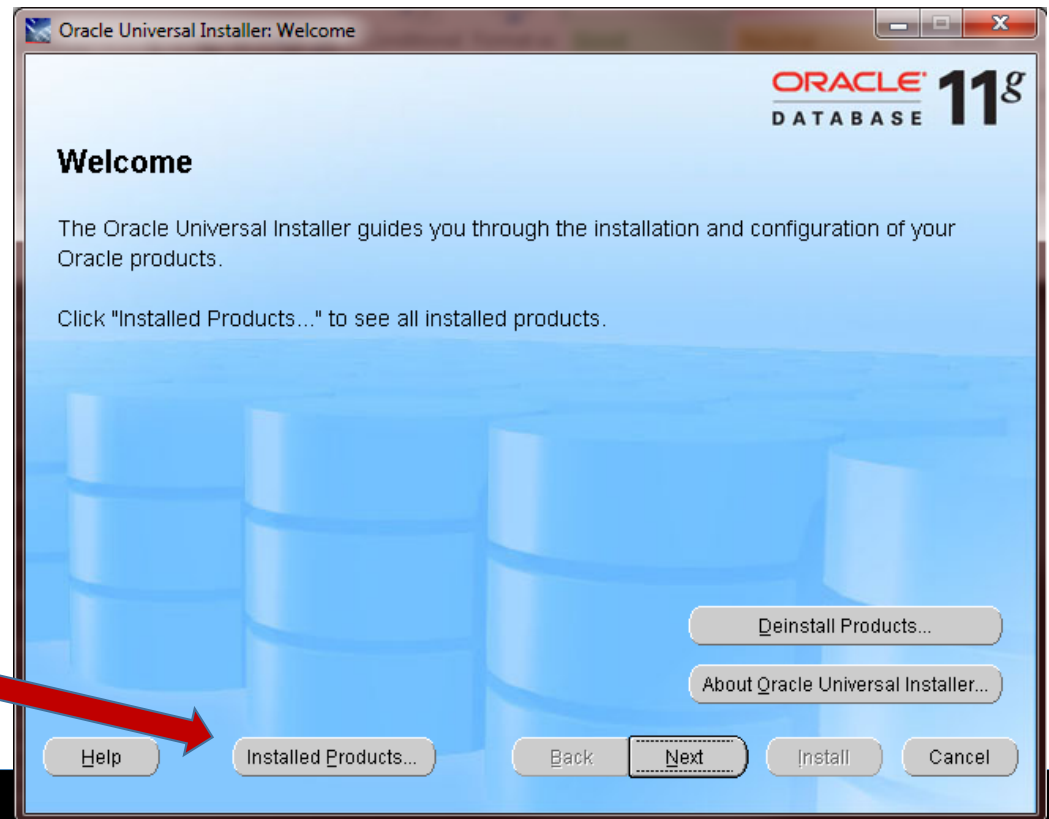
- **Oracle Universal Installer**
 - Welcome screen



Connecting to CIWQA

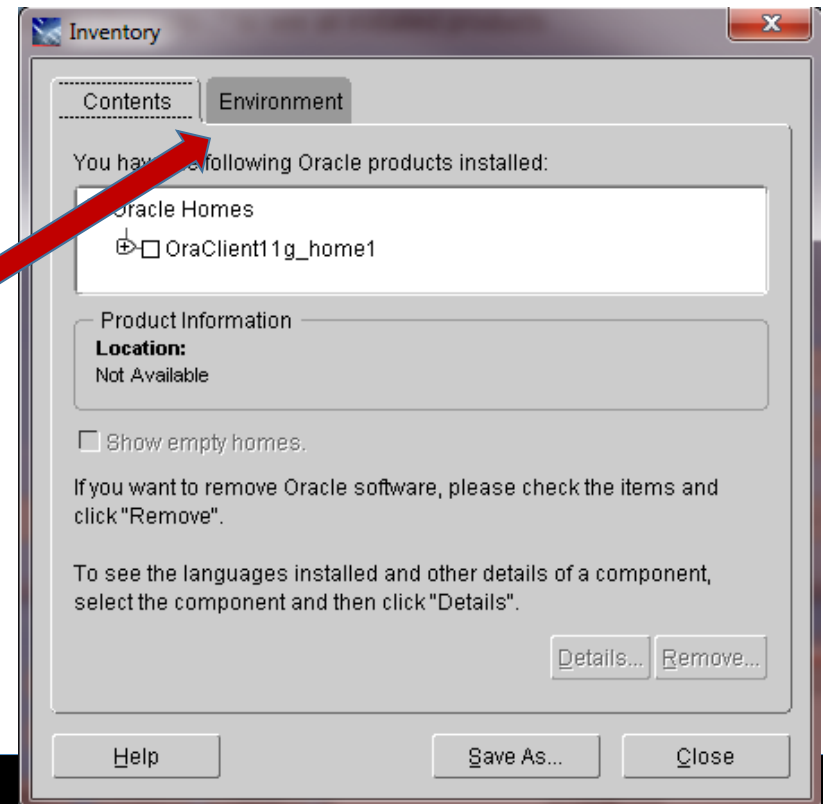
- **Oracle Universal Installer**
 - Click on Installed Products Button

Installed Products...



Connecting to CIWQA

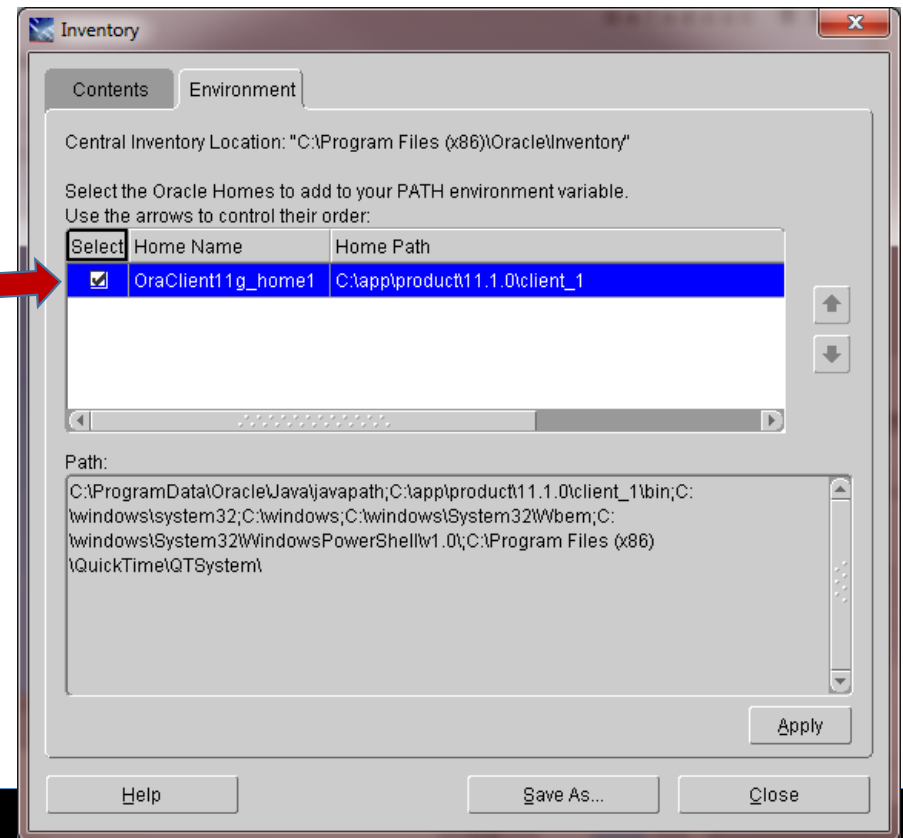
- **Oracle Universal Installer**
 - Click on Environment Tab



Connecting to CIWQA

- **Oracle Universal Installer**

- Path to Oracle Home
- TNSNames file is in the /network/admin dir under Oracle Home.



Agenda

- Overview
- Connecting to CIWQA
- **Table changes**
- What to expect in November



University of Colorado

Boulder | Colorado Springs | Denver | Anschutz Medical Campus

Table Changes—Overview

- **Guiding principle** has been to minimize disruptive change, while delivering value and new features
 - HCM tables are still called HRMS
 - Even if functionally equivalent data “lives” in a *new* place in HCM or FIN, we leave it in the *same* place in the CIW
- Grant data is now in QA

HCM Table Changes--Highlights

- HRMS_PERSONAL_TBL
 - Home department and campus box are now calculated based on the department of a person's primary job or role
 - Background Check data is now on it's own table



University of Colorado

Boulder | Colorado Springs | Denver | Anschutz Medical Campus

HCM Table Changes--Highlights

- HRMS_JOB_TBL
 - All jobs in JOB_TBL are now approved, so JOB_STATUS_CODE and JOB_STATUS_DATE no longer apply.
 - Contact irmhelp@cu.edu if you used these.



University of Colorado

Boulder | Colorado Springs | Denver | Anschutz Medical Campus

HCM Table Changes--Highlights

- Tables going away
 - HRMS_APPLICANT_TBL
 - HRMS_APPLICATION_TBL
 - HRMS_SALARY_LIMIT_TBL

- HRMS_FUNDING_TBL
- HRMS_JOB_REQUISITION_TBL



GL Table Changes--Highlights

- Three Tables are no longer relevant for CU Business Rules:
 - GL_AVAIL_BAL_TBL
 - GL_PERSONNEL_BUDGET_LINES
 - GL_EPERS_POSN_TBL



GL Table Changes--Highlights

- Fields Removed

- Campus Box, in many places
 - ChartFields, if not being used
 - FRS info on speedtype table
 - Account attributes like “System Maintained”
-
- Org rollup info on the ORG itself—should now just use the ORG tree

GL Table Changes--Highlights

- New Key fields for SpeedType
 - BUSINESS_UNIT_PC
 - ACTIVITY_ID
 - ANALYSIS
- Look for these on Journal, Ledger, FOPPS(AAB) and SpeedType tables



GL Table Changes--Highlights

- GL_PROJECT_TBL & GL_PROJ_TBL
 - Much of this data has moved to the grants area
 - Projects are no longer effective dated
 - Some obsolete features have been removed (Phone number, campus box, SPINS, etc)

Grants Table Changes--Highlights

- New Tables

- GM_AWARD_TBL
- GM_BUDGET_TBL
- GM_PROJ_ACT_TBL
- **GM_F_AND_A_RATE_TBL**
- **GM_MILESTONE_TBL**
- **GM_PROPOSAL_TBL**
- **GM_SPONSOR_TBL**
- **GM_TEAM_TBL**



Agenda

- Overview
- Connecting to CIWQA
- Table changes
- **What to expect in November**



University of Colorado

Boulder | Colorado Springs | Denver | Anschutz Medical Campus

What to expect in November

- The data structures may not look exactly like they do in CIWQA today
- HCM Go Live 11/3, FIN Go Live 11/10
- CIW tables in a new ARTEMIS_OLD area (schema) will be available *indefinitely* with data frozen as-of go-live
 - Data from 1999 – 11/10/2015 will be available in BOTH places
- CIW Extracts will run on an adjusted schedule between 11/1 and 11/10.



Resources

- “Crosswalk” table documentation
- Webinars & Audio recordings
- irmhelp@cu.edu
- Websites with information
 - www.cu.edu/irm
 - www.cu.edu/Elevate
 - www.cu.edu/elevate-ciw
 - www.cu.edu/university-information-systems/ciw-frequently-asked-questions



University of Colorado

Boulder | Colorado Springs | Denver | Anschutz Medical Campus



**KEEP
CALM
CHANGE
IS
COMING**



University of Colorado

Boulder | Colorado Springs | Denver | Anschutz Medical Campus

