



## Feature Articles

new threats  
ficer and  
with incident  
[your campus](#)

### **Explore Resources on Using Artificial Intelligence at CU** <sup>[1]</sup>

While AI can provide valuable capabilities, it's crucial to remain proactive and informed about potential risks. Know these key tips and campus resources to help you stay secure and keep CU data protected.

### **Are Your Taking These 10 Steps to Keep Data Safe?**

Adopt these simple yet crucial steps to keep our confidential data safe. [Read More](#) <sup>[5]</sup> <sup>[6]</sup>

---



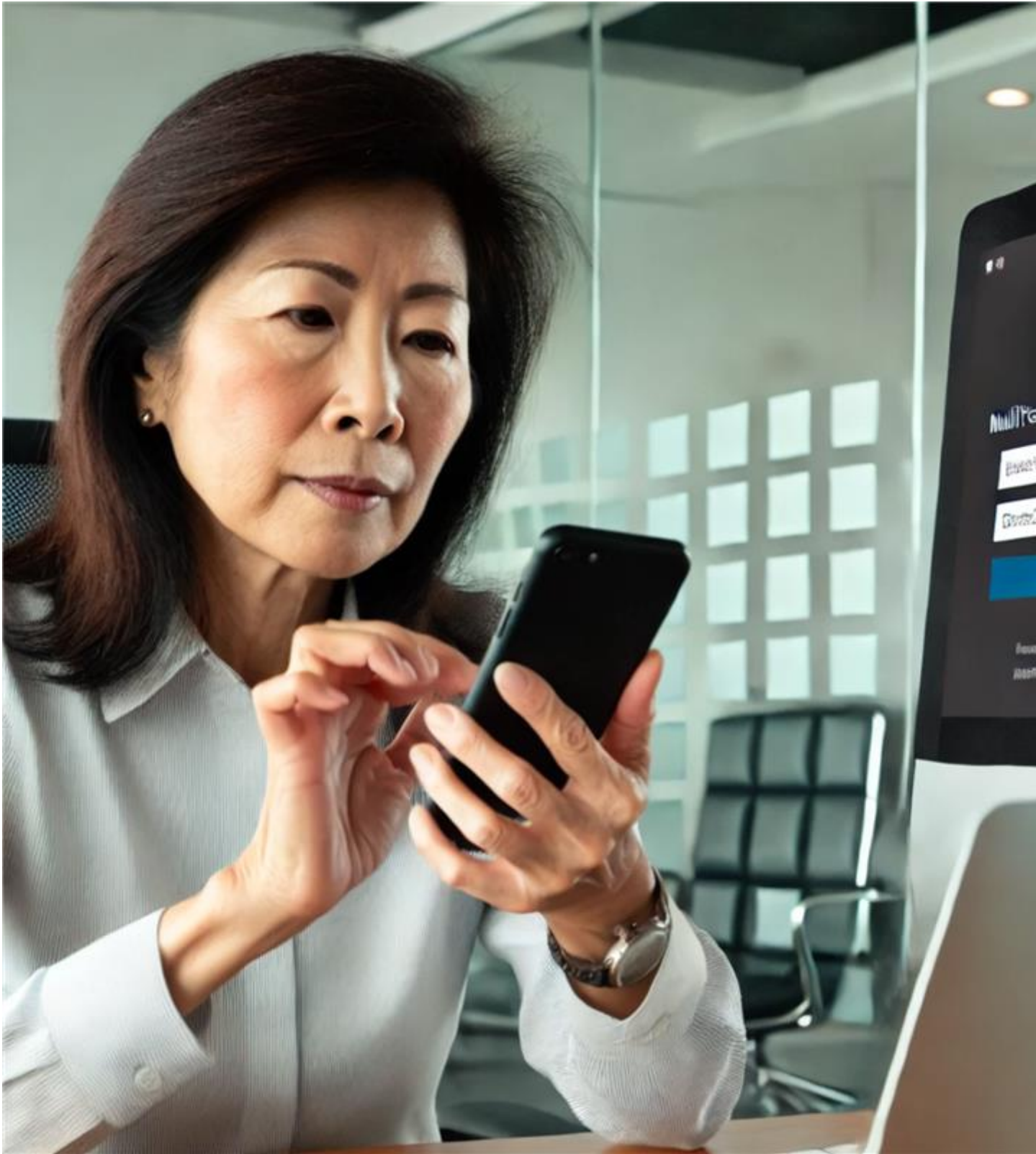
## Can Your Passwords Withstand Cybercrime?

Strong and secure passwords are essential for protecting personal and sensitive university data.  
[Read More](#) <sup>[7]</sup>

---







## **MFA: Added Protection from Cybercrime**

MFA is a crucial security feature designed to verify your identity before granting access to accounts.  
[Read More](#) <sup>[8]</sup>

---



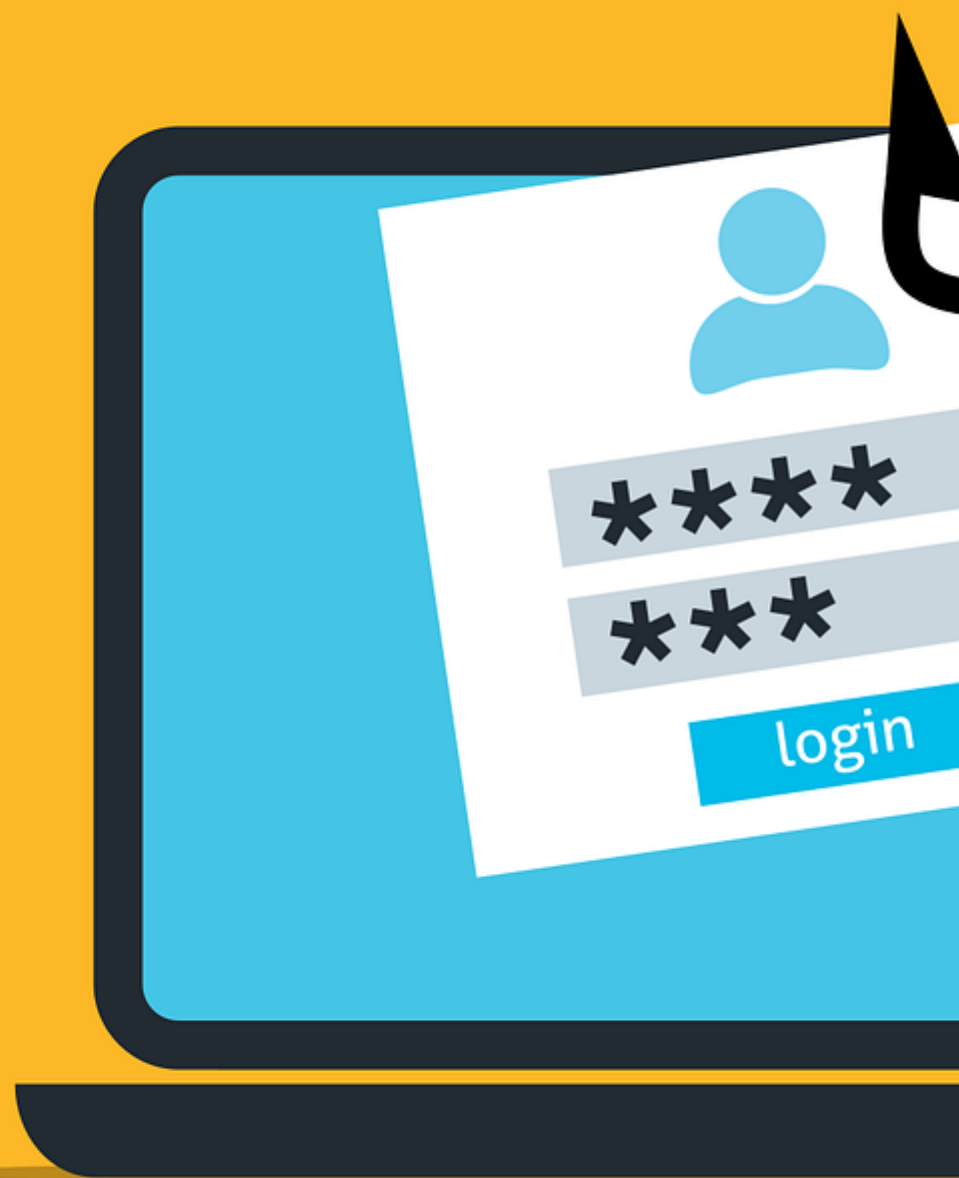
## Available Training

Check out CU's online security training courses.

[Read more](#) [9]

---





## Avoid Being a Phishing Scam Victim

Before clicking any links or downloading attachments, assess the email's legitimacy. [Read more](#) <sup>[10]</sup>

---



## Keep Your Family Secure Online

Kids are especially vulnerable to cybercrime. Teach them good security behaviors. [Read more](#) <sup>[11]</sup>

---

## Top Policies and Standards

### Custom text

## Top Policies, Standards, Guidelines to Know

### IT Security Program <sup>[12]</sup>

Serves as the core for the university's information security activities and provides general guidance.

---

### Systemwide Security Baseline Standards <sup>[13]</sup>

Provides guidelines for selecting and specifying security controls for organizations and information systems.

---

### Data Classification <sup>[14]</sup>

Provides guidelines for classifying university information and helps determine minimum security requirements necessary to keep it safe.

---

### Collection of Personal Data from Students and Customers <sup>[15]</sup>

---

**Source URL:**<https://www.cu.edu/departments/184268/data-management-group-members>

Provides requirements for the collection of personal data from students and other customers of the university, and for detecting warning signs associated with identity theft.

#### Links

[1] <https://www.cu.edu/security/explore-resources-using-artificial-intelligence-cu>

[2] <https://www.cu.edu/security/information-security-course-compliance-faqs>

[3] <https://www.cu.edu/security/reporting-incident> [4] <https://www.cu.edu/security/about>

[5] <https://www.cu.edu/security/are-you-taking-these-10-steps-keep-data-safe>  
Establishes universitywide records retention policy and records retention schedules to comply with state law and align with best practices

[6] <https://www.cu.edu/security/top-three-social-media-scams> [7] <https://www.cu.edu/security/can-your-passwords-withstand-cybercrime> [8] <https://www.cu.edu/security/multi-factor-authentication-added-protection-cybercrime> [9] <https://www.cu.edu/security/awareness/available-training>

#### Electronic Communications

[10] <https://www.cu.edu/security/avoid-being-phishing-scam-victim> [11] <https://www.cu.edu/security/keep-family-secure-online> [12] <https://www.cu.edu/ope/aps/6005> [13] <https://www.cu.edu/security/systemwide-baseline-security-standards> [14] <https://www.cu.edu/data-governance/resources-support/data-classification> [15] <https://www.cu.edu/ope/aps/7003> [16] <https://www.cu.edu/ope/aps/2006>

[17] <https://www.cu.edu/ope/aps/6002> [18] <https://www.cu.edu/security/security-guidance-software-service>

#### Security Guidance for Software as a Service (SaaS)

[19] <https://www.cu.edu/security/policies>

Provides security guidance for departments and teams who are considering SaaS options for their technology needs.

---

Visit the [Policies](#) [19] webpage for an expanded list.

---