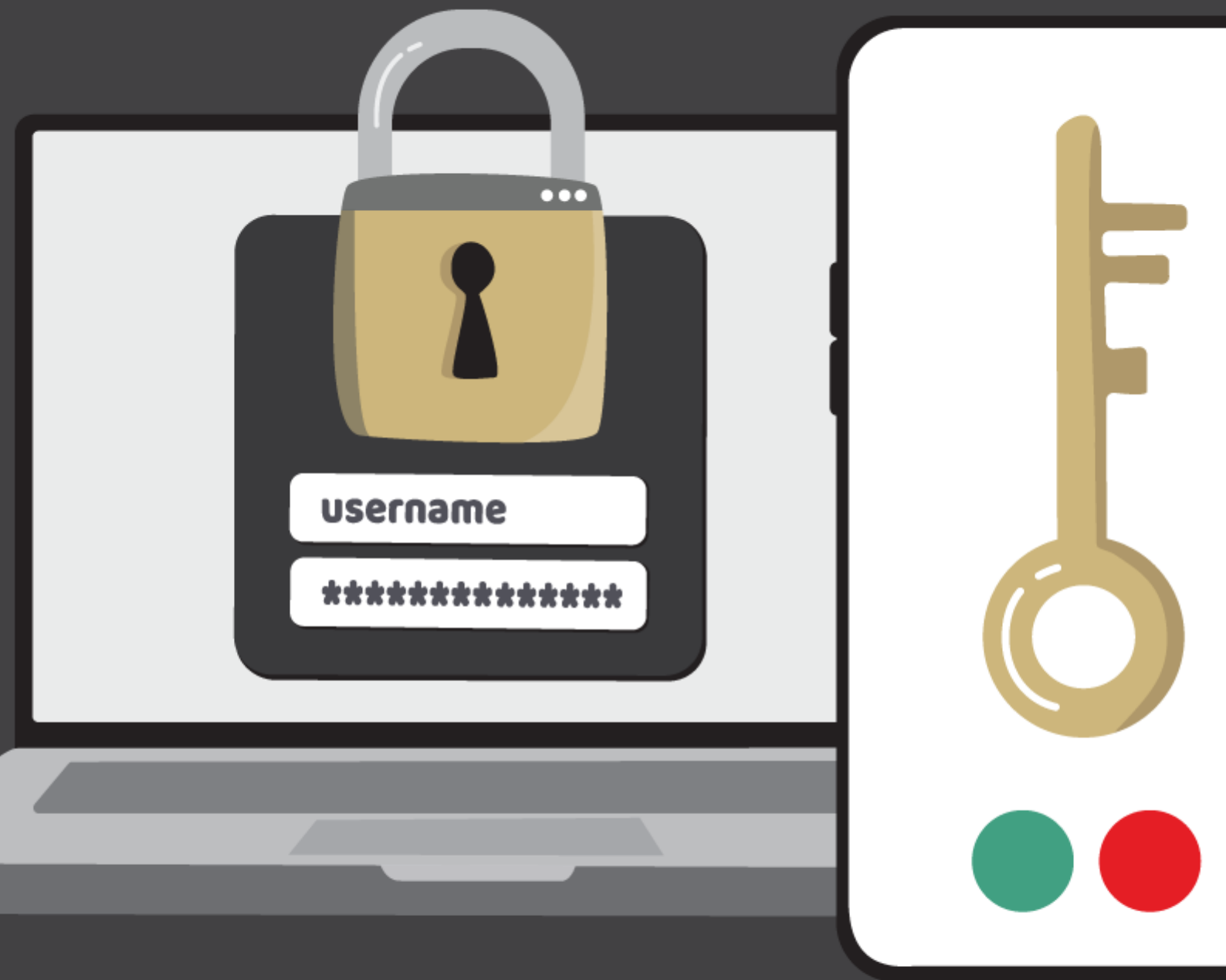


## **Identity and Password Management** <sup>[1]</sup>

### **Protect your identity and the data of the CU community.**

As cybercrime threatens people's data, the biggest step employees can take is to use CU's security resources when working with university data and resources.





# MULTI-FACTOR AUTHENTICATION

**H E L L O**  
my name is



**PREFERRED NAME**



# PASSWORD RESET

**Groups audience:**

University Information Services

---

**Source URL:**<https://www.cu.edu/iam>

**Links**

[1] <https://www.cu.edu/iam> [2] <https://www.cu.edu/uis/access-it-security/cu-identity-manager>  
[3] <https://www.cu.edu/uis/access-it-security/identity-and-password-management/multi-factor-authentication-mfa> [4] <https://www.cu.edu/uis/access-it-security/identity-and-password-management/preferred-name> [5] <https://www.cu.edu/passwords>