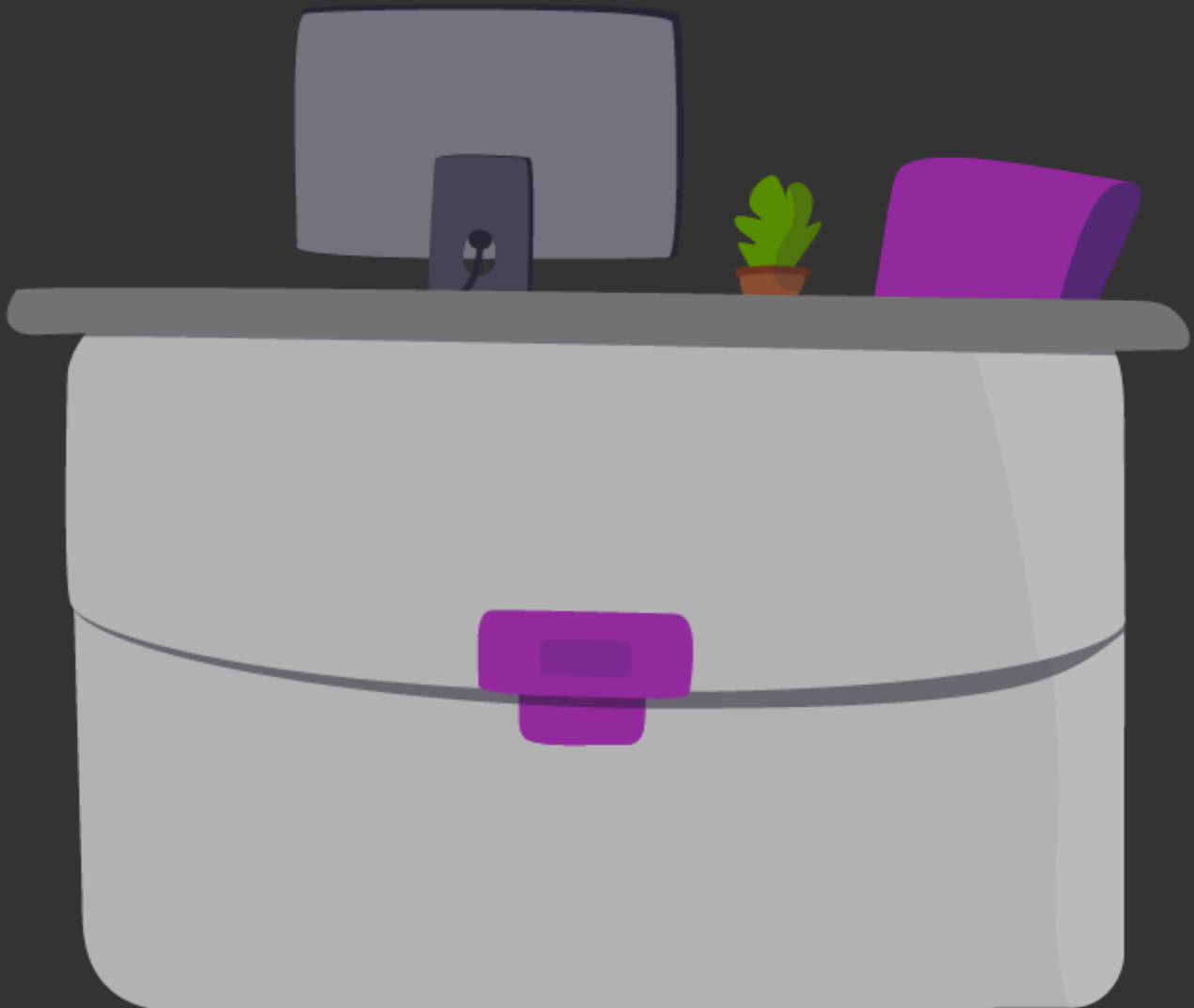


System ^[1]

At CU System, your leave options depend on your employment.

Select your employment type below to learn what's available to you.



University Staff



Classified Staff



Groups audience:

Employee Services

Right Sidebar:

ES: HR - Leave Team Contact

Source URL:<https://www.cu.edu/employee-services/leave/famli-fmla-and-parental-leave/system>

Links

[1] <https://www.cu.edu/employee-services/leave/famli-fmla-and-parental-leave/system>

[2] <https://www.cu.edu/employee-services/leave/famli-fmla-and-parental-leave/system/university-staff>

[3] <https://www.cu.edu/employee-services/leave/famli-fmla-and-parental-leave/system/classified-staff>

[4] <https://www.cu.edu/employee-services/leave/famli-fmla-and-parental-leave/system/students-temporary-and-hourly-employees>