

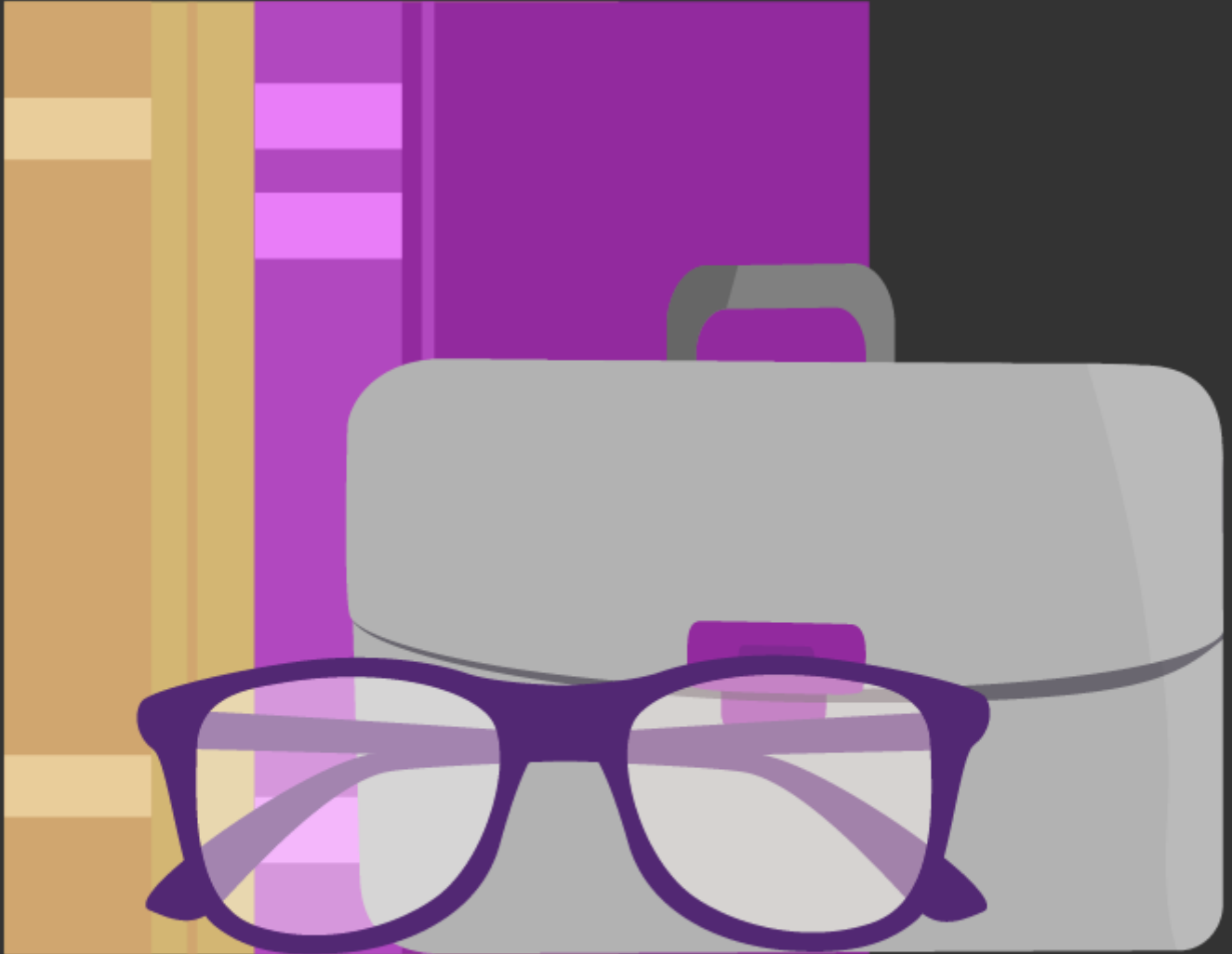
## **CU Boulder** <sup>[1]</sup>

**At CU Boulder, your leave options depend on your employment.**

Select your employment type below to learn what's available to you.



# University Staff & 12-month Faculty

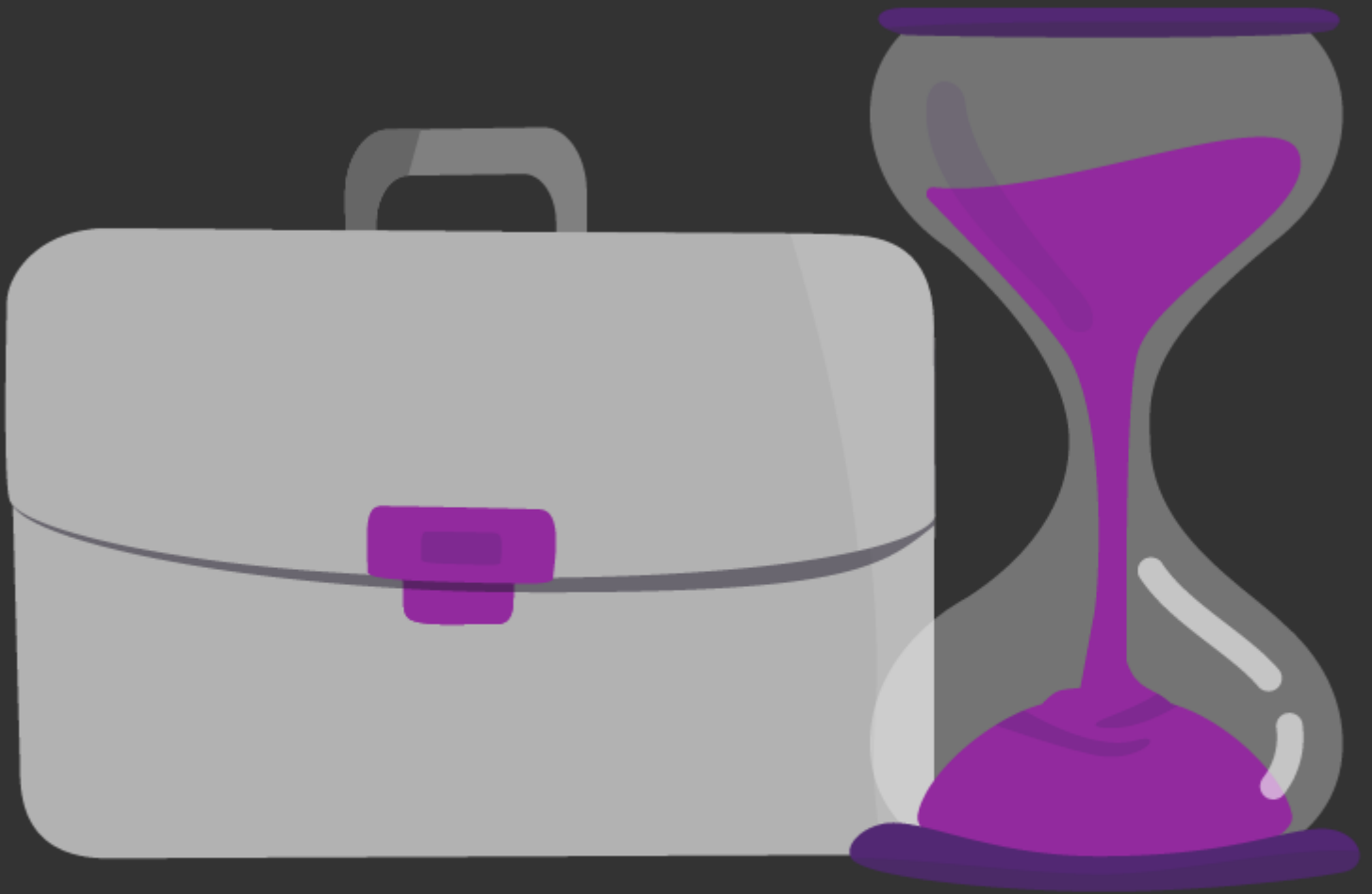


# Classified Staff





# 9-month Faculty



# Temporary Faculty





# 12-month Libraries Faculty

**Groups audience:**  
Employee Services

## Right Sidebar:

ES: HR - Leave Team Contact

---

**Source URL:**<https://www.cu.edu/employee-services/leave/famli-fmla-and-parental-leave/cu-boulder>

### Links

[1] <https://www.cu.edu/employee-services/leave/famli-fmla-and-parental-leave/cu-boulder>  
[2] <https://www.cu.edu/employee-services/leave/famli-fmla-and-parental-leave/cu-boulder/university-staff-and-12-month> [3] <https://www.cu.edu/employee-services/leave/famli-fmla-and-parental-leave/cu-boulder/classified-staff> [4] <https://www.cu.edu/employee-services/leave/famli-fmla-and-parental-leave/cu-boulder/tenure-and-tenure-track-faculty> [5] <https://www.cu.edu/employee-services/leave/famli-fmla-and-parental-leave/cu-boulder/9-month-faculty> [6] <https://www.cu.edu/employee-services/leave/famli-fmla-and-parental-leave/cu-boulder/graduate-students> [7] <https://cu.edu/employee-services/leave/famli-fmla-and-parental-leave/cu-boulder/temporary-faculty> [8] <https://www.cu.edu/employee-services/leave/famli-fmla-and-parental-leave/cu-boulder/students-temporary-and-hourly> [9] <https://www.cu.edu/employee-services/leave/famli-fmla-and-parental-leave/cu-boulder/12-month-libraries-faculty>