

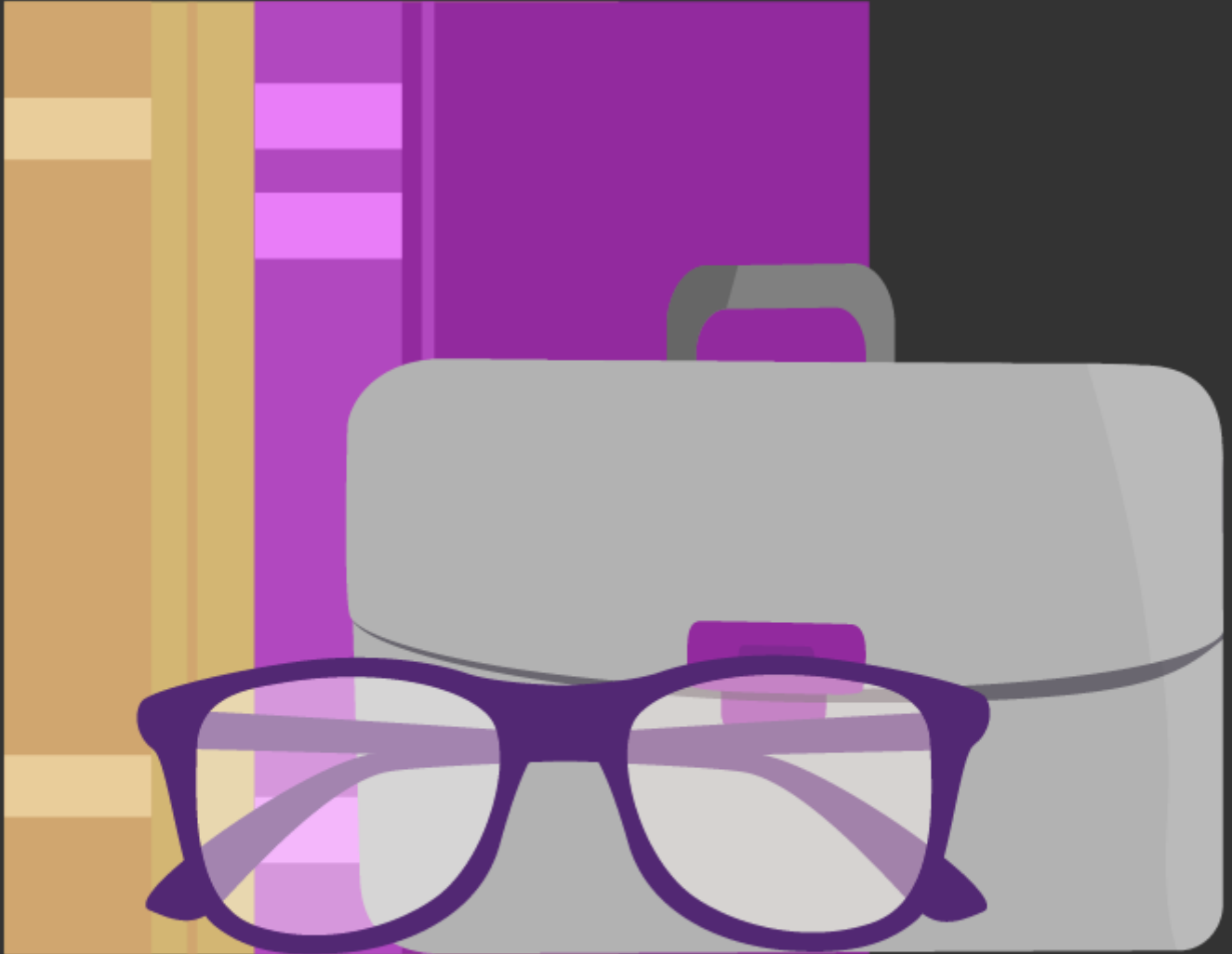
AMC ^[1]

At CU Anschutz, your leave options depend on your employment.

Select your employment type below to learn what's available to you.



University Staff & 12-month Faculty



Classified Staff



Post-Doctoral Fellows



Graduate Students

Groups audience:
Employee Services
Right Sidebar:

Source URL:<https://www.cu.edu/employee-services/leave/famli-fmla-and-parental-leave/amc>

Links

[1] <https://www.cu.edu/employee-services/leave/famli-fmla-and-parental-leave/amc>
[2] <https://www.cu.edu/employee-services/leave/famli-fmla-and-parental-leave/amc/university-staff-and-12-month-faculty> [3] <https://www.cu.edu/employee-services/leave/famli-fmla-and-parental-leave/amc/classified-staff> [4] <https://www.cu.edu/employee-services/leave/famli-fmla-and-parental-leave/amc/gme-residents> [5] <https://www.cu.edu/employee-services/leave/famli-fmla-and-parental-leave/amc/post-doctoral-fellows> [6] <https://www.cu.edu/employee-services/leave/famli-fmla-and-parental-leave/amc/student-temporary-and-hourly-employees> [7] <https://www.cu.edu/employee-services/leave/famli-fmla-and-parental-leave/amc/graduate-students>