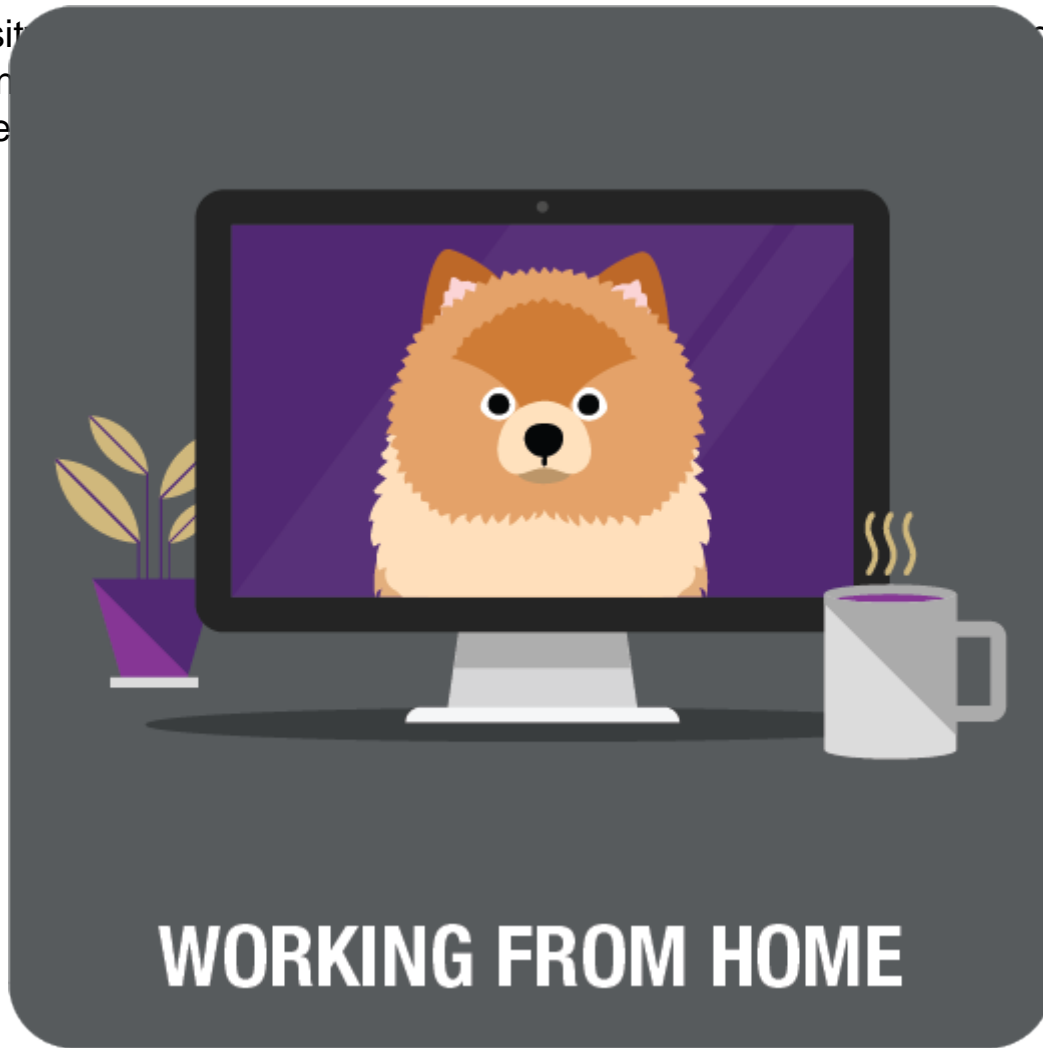


Policies ^[1]

It's all in the details.

University
decision
of these

ces
points



[2]

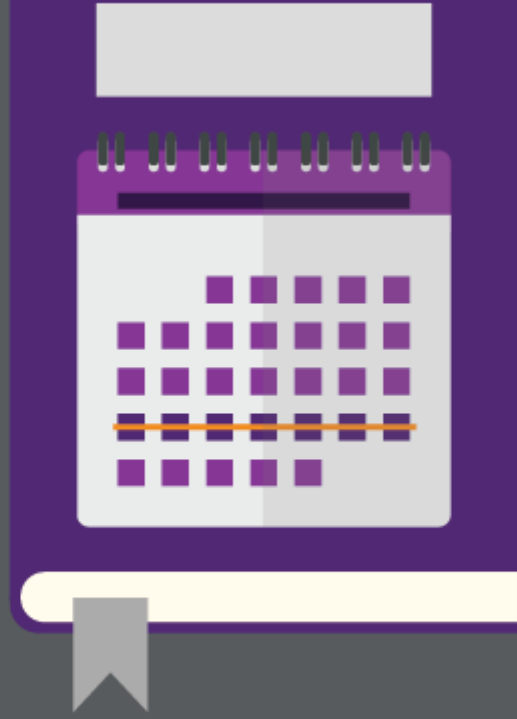


ADA COMPLIANCE



COMPENSATION

[4]



LEAVE POLICIES

[5]



SEXUAL MISCONDUCT



CONFLICT OF INTEREST



NEPOTISM



STUDENT EMPLOYMENT - HANDBOOK

[9]

Regent Policies [10]

University Policies [11]

Groups audience:

Employee Services

Right Sidebar:

ES: HR - Contact

ES:HR - Campus HR Contact Information

Source URL:<https://www.cu.edu/employee-services/collaborative-hr-services/cu-system/policies>

Links

[1] <https://www.cu.edu/employee-services/collaborative-hr-services/cu-system/policies>

[2] <https://www.cu.edu/employee-services/collaborative-hr-services/cu-system/working-cu-system/flexible-work>

[3] <https://www.cu.edu/employee-services/collaborative-hr-services/cu-system/policies/ada-compliance>

[4] <https://www.cu.edu/employee-services/compensation-0>

[5] <https://www.cu.edu/employee-services/collaborative-hr-services/cu-system/time/vacation-and-sick-time-leave-policies>

[6] <https://www.cu.edu/sexual-misconduct>

[7] <https://www.cu.edu/employee-services/collaborative-hr-services/cu-system/policies/conflict-interest>

[8]

<https://www.cu.edu/ope/aps/5003#:~:text=may%20not%20appoint%2C%20nor%20participate,than%20the%20imme>
[9] <https://www.cu.edu/employee-services/collaborative-hr-services/cu-system/policies/student-employment> [10] <https://www.cu.edu/regents/regent-policy-0> [11] <https://www.cu.edu/ope/aps>