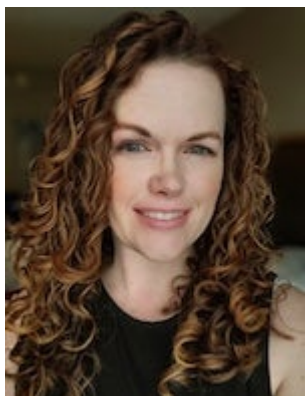


## **Leadership** <sup>[1]</sup>

The eComm program is supported by CU System, University Information Services (UIS). Additionally, CU's four campuses and Advancement have at least one designated eComm Specialist.

- eComm Team
- CRM Team

**CU SYSTEM, UNIVERSITY INFORMATION SERVICES | [contact@cu.edu](mailto:contact@cu.edu)** <sup>[2]</sup>



**Megan Harris**

Senior eComm Program Success Analyst

**CU ADVANCEMENT**



**Serwaa Adu-Tutu** [3]  
Sr. Digital Marketing Manager

**CU ANSCHUTZ |**  
**ecomm@cuanschutz.edu** [6]



**Nicole Lawrence**  
Director of Digital Communications

**CU BOULDER, STRATEGIC RELATIONS | eComm-BUG@colorado.edu** [7]



**Erin Frazier**

Assistant Vice Chancellor of Constituent  
Engagement

**CU BOULDER ADVANCEMENT  
MARKETING AND COMMUNICATIONS**



**Tom Needy** [8]

Associate Director of eComm Strategy  
and Operations, Advancement Marketing  
and Communications

**CU COLORADO SPRINGS**



**Eric Nissen** [10]  
??Director, Marketing and  
eCommunication

## CU DENVER



**Emilia Covault** [12]  
Admin Support Specialist

## CU SYSTEM, UNIVERSITY INFORMATION SERVICES



**Jennifer Mortensen**  
Director of CRM



**Jeff Benn**  
Assistant Director of CRM



**Da**  
Senior Sa

### Groups audience:

eComm

---

**Source URL:**<https://www.cu.edu/ecomm/strategy/leadership>

### Links

[1] <https://www.cu.edu/ecomm/strategy/leadership> [2] <mailto:contact@cu.edu> [3] <mailto:Serwaa.Adu-Tutu@cu.edu> [4] <mailto:hodgesl@cu.edu> [5] <mailto:Madeline.Taylor@cu.edu> [6] <mailto:ecomm@cuanschutz.edu> [7] <mailto:eComm-BUG@colorado.edu> [8] <mailto:tom.needy@colorado.edu> [9] <mailto:Maddy.Zuniga@colorado.edu> [10] <mailto:enissen@uccs.edu> [11] <mailto:hpirtle@uccs.edu> [12] <mailto:emilia.covault@ucdenver.edu>