

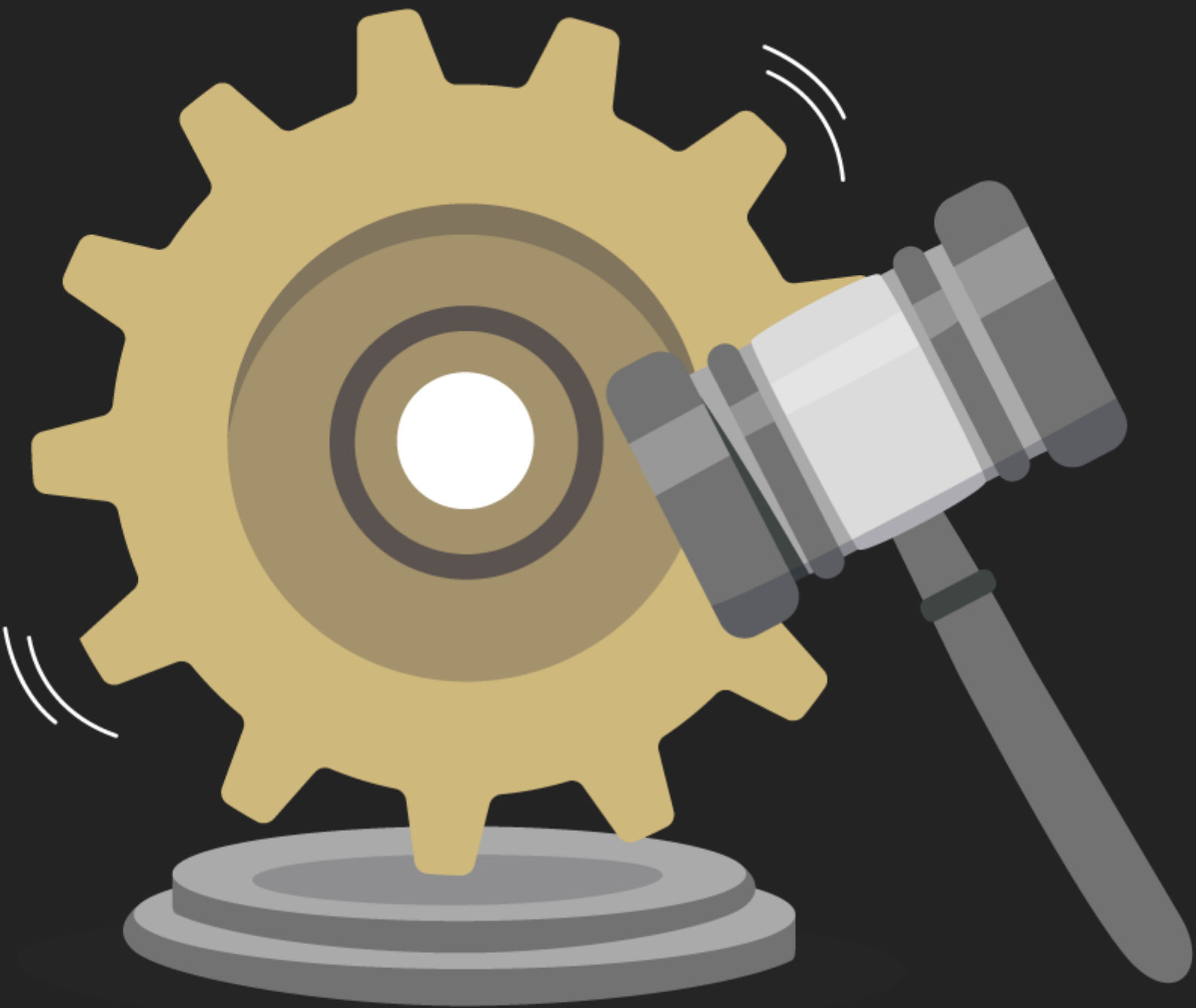
Every day, thousands of gigabytes of data pass through the CU Servers.

To ensure that data is managed as a sensitive asset, the University of Colorado has established a data governance program with the goals of ensuring that data provides value, meets compliance requirements, and risks are managed proactively.

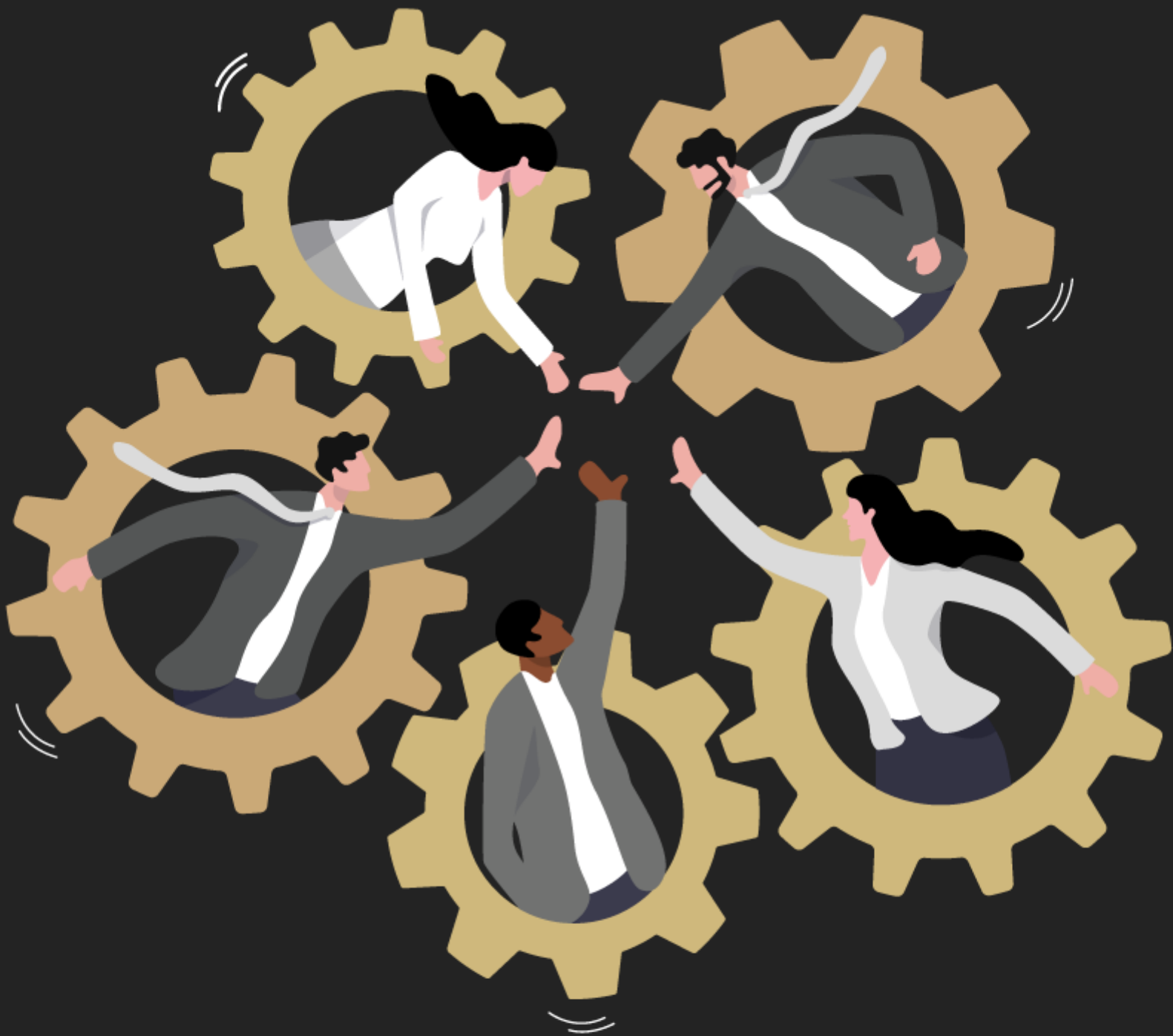
If you have a specific request, please email the [Data Governance group](#). ^[1]

Below, find resources on topics crucial to cohesive and secure data management.

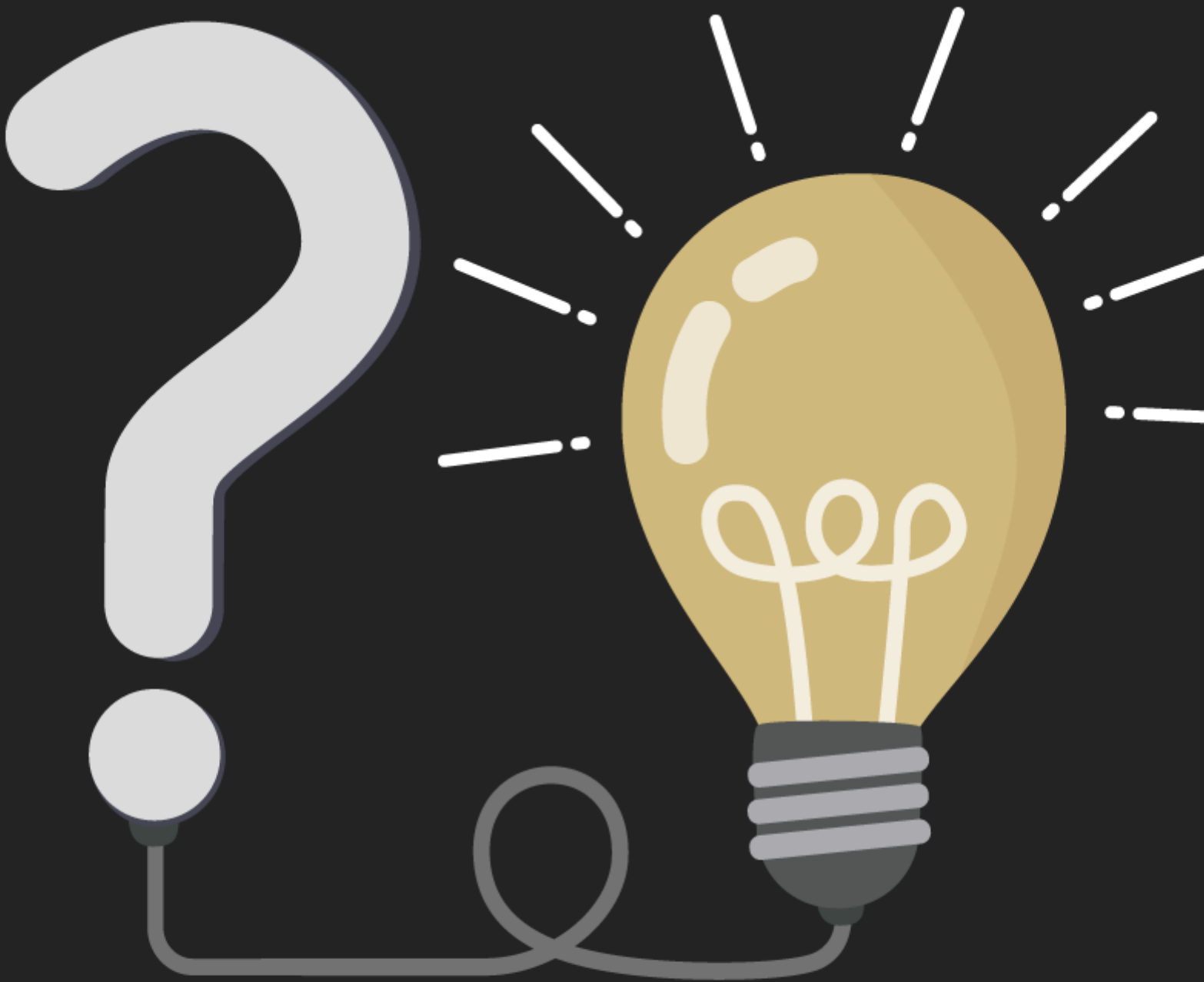




DATA POLICIES & GUIDELINES



DATA ROLES & RESPONSIBILITIES



**SOLUTIONS
& SUPPORT**

Secure user access

UIS provides reliable and secure access to systemwide software platforms crucial to employee work. Please visit the [Access and IT Security web page](#) [6] to find resources for onboarding, identity and password management, access coordinators and for employees to request access.

Request access [6]

For access information specific to Collibra, visit the [Collibra Access web page](#) [7].

[8]

[9]

Source URL: <https://www.cu.edu/node/344465/cu-data-solutions-support>

Links

[1] <mailto:data.governance@cu.edu> [2] <https://www.cu.edu/data-governance/resources-support/data-classification> [3] <https://www.cu.edu/data-governance/resources-support/data-policies-guidelines> [4] <https://www.cu.edu/data-governance/data-groups-and-roles> [5] <https://www.cu.edu/data-governance/cu-data-solutions-support> [6] <https://www.cu.edu/uis/access-and-it-security> [7] <https://www.cu.edu/data-governance/collibra-data-catalog/access> [8] <https://www.cu.edu/print/data-governance/resources-support> [9] <https://www.cu.edu/printpdf/data-governance/resources-support>