

## Clone of CU Data <sup>[1]</sup>



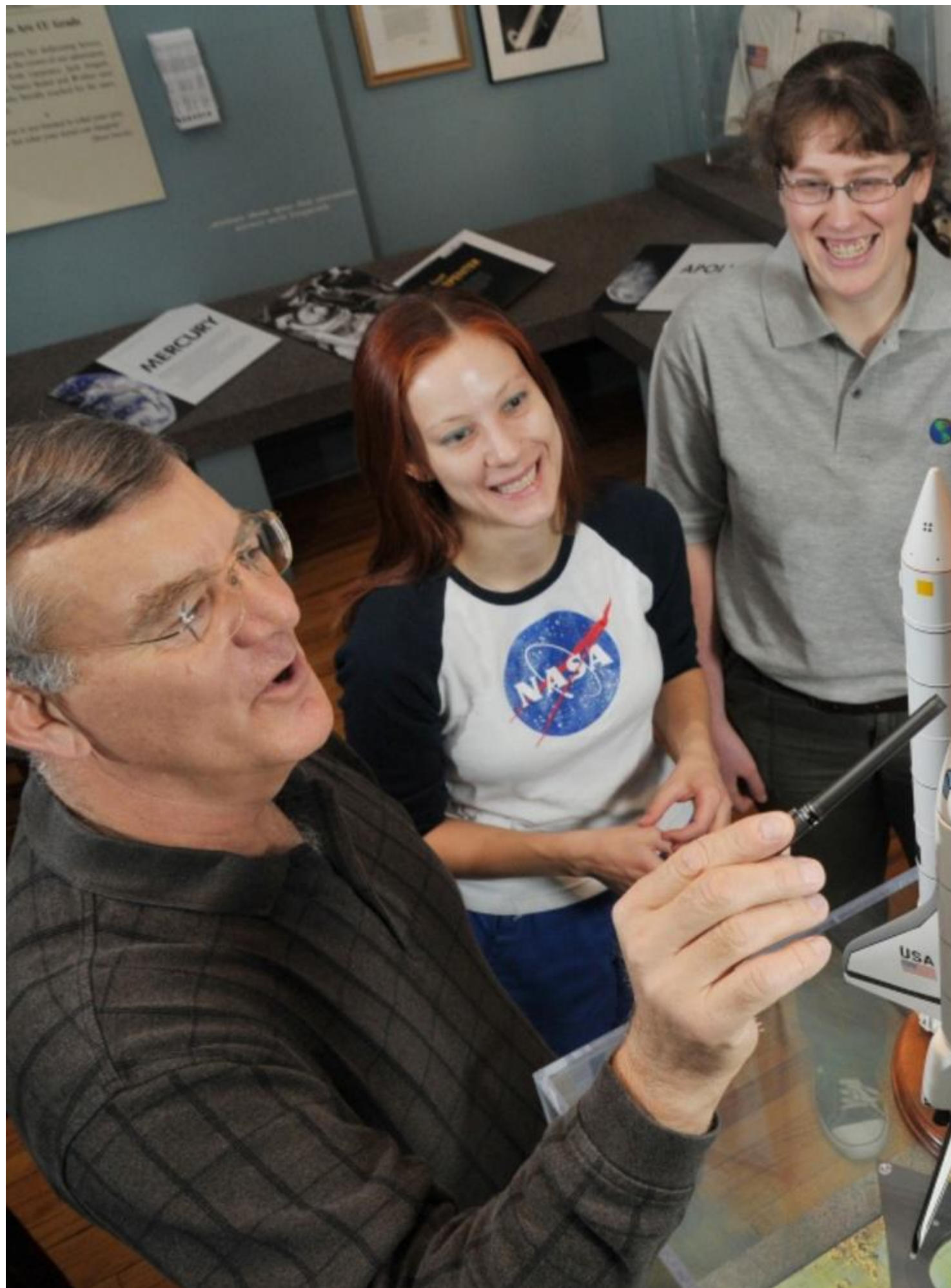




















[2] [Interactive Data](#) [2]  
[col width="1-3"]





[3] General Facts [3][col width="1-3" last="1"]

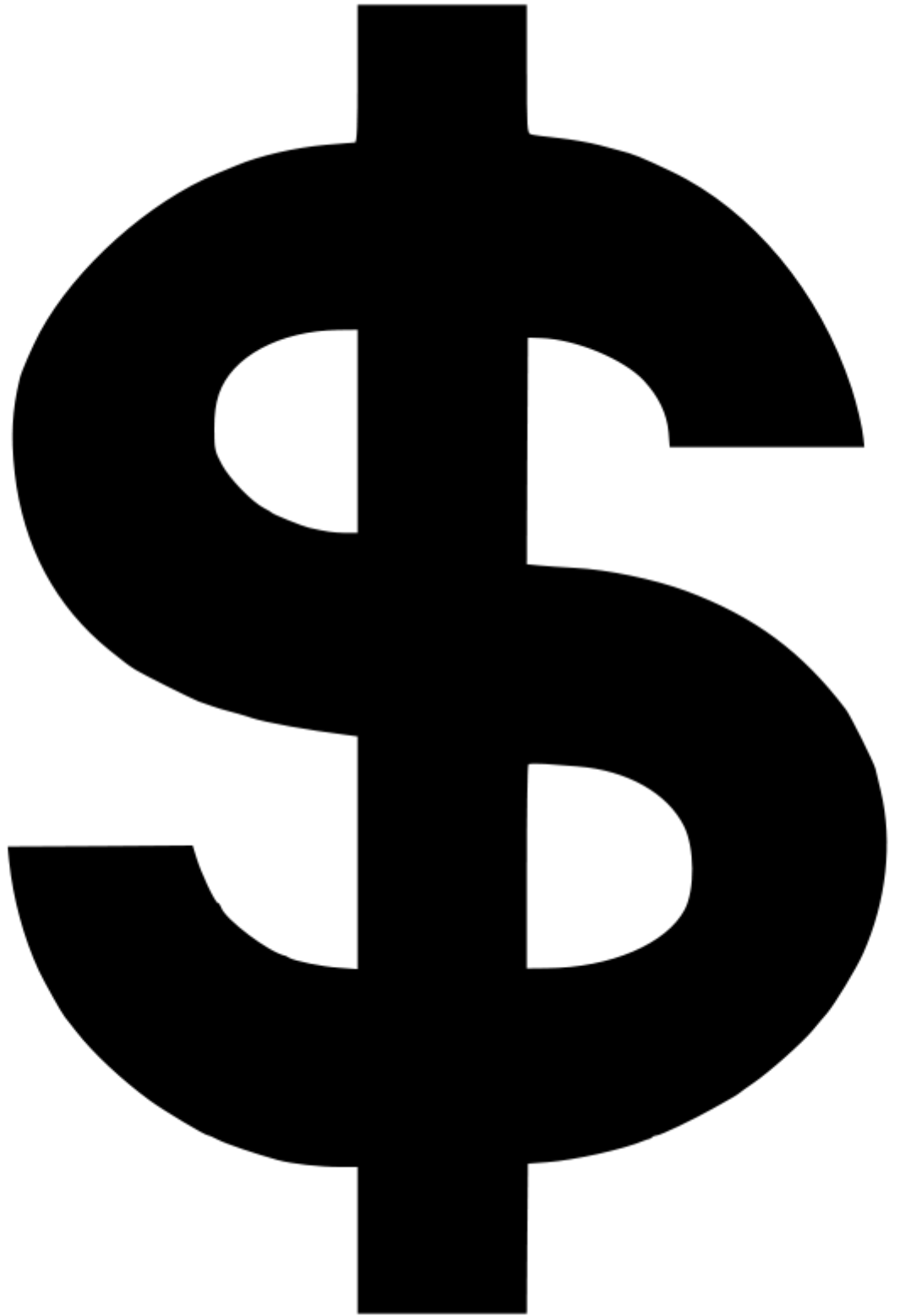


[4] Student Enrollment [4]



Degrees Awarded [5]

[col width="1-3"]



Budget [6] [col width="1-3" last="1"]





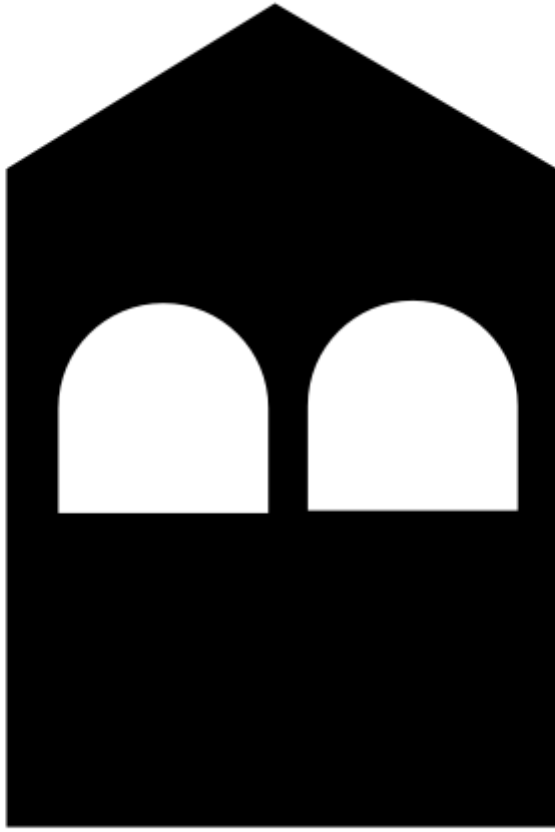
Cost of Attendance [7]



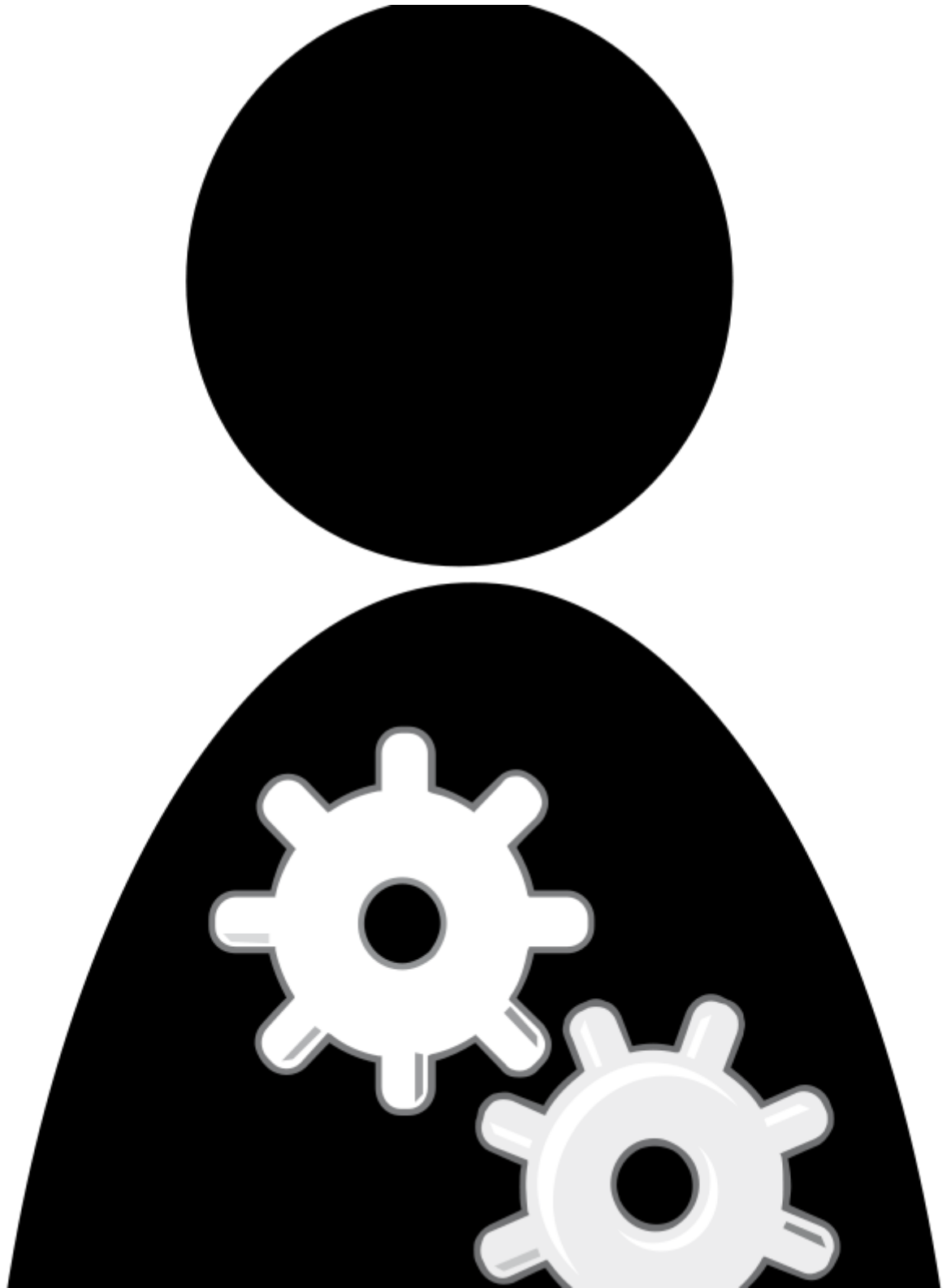
image not found or type unknown

[col width="1-3"]

Financial Assistance [8] [col width="1-3"]



Capital Assets <sup>[9]</sup> [col width="1-3" last="1"]



Faculty and Staff <sup>[10]</sup>

[col width="1-3"]



Research <sup>[11]</sup>



Additional reports and data are available through the Office of Academic Affairs [12]. View the current and past Diversity Report [13] and Pre-Collegiate Development Program (PCDP) Report [13].

**Groups audience:**

Budget and Finance Office

---

**Source URL:**<https://www.cu.edu/budgetpolicy/clone-cu-data-0>

**Links**

[1] <https://www.cu.edu/budgetpolicy/clone-cu-data-0> [2] <https://www.cu.edu/budgetpolicy/interactive-data-visualizations> [3] <https://www.cu.edu/budgetpolicy/general-facts-about-cu>  
[4] <https://www.cu.edu/budgetpolicy/enrollment-data> [5] <https://www.cu.edu/budgetpolicy/degrees-awarded-data> [6] <https://www.cu.edu/budgetpolicy/cu-data-made-simple-0>  
[7] <https://www.cu.edu/budgetpolicy/cost-attendance> [8] <https://www.cu.edu/budgetpolicy/financial-assistance-data> [9] <https://www.cu.edu/budgetpolicy/capital-assets-data>  
[10] <https://www.cu.edu/budgetpolicy/faculty-and-staff-data> [11] <https://www.cu.edu/budgetpolicy/research-data> [12] <https://www.cu.edu/oaa> [13] <https://www.cu.edu/oaa/reports-policy-briefs>