

How to connect to VPN using the Cisco AnyConnect client for Windows

UIS Service Desk
303-860-HELP (4357)
help@cu.edu



University of Colorado

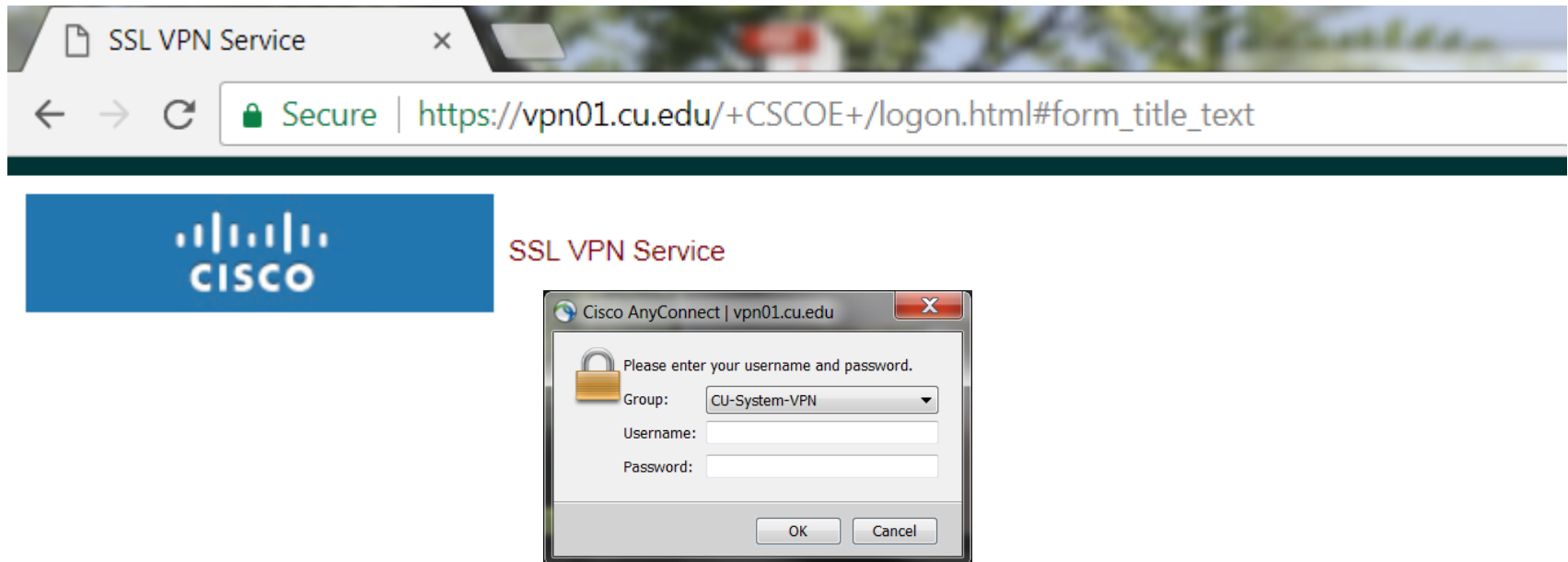
Boulder | Colorado Springs | Denver | Anschutz Medical Campus

UNIVERSITY INFORMATION SERVICES

HOW TO CONNECT TO VPN USING THE CISCO ANYCONNECT CLIENT FOR WINDOWS

Please note: If you're using a UCB, UCD or System-owned machine, AnyConnect is probably installed. To access it go to step 9 of this guide.

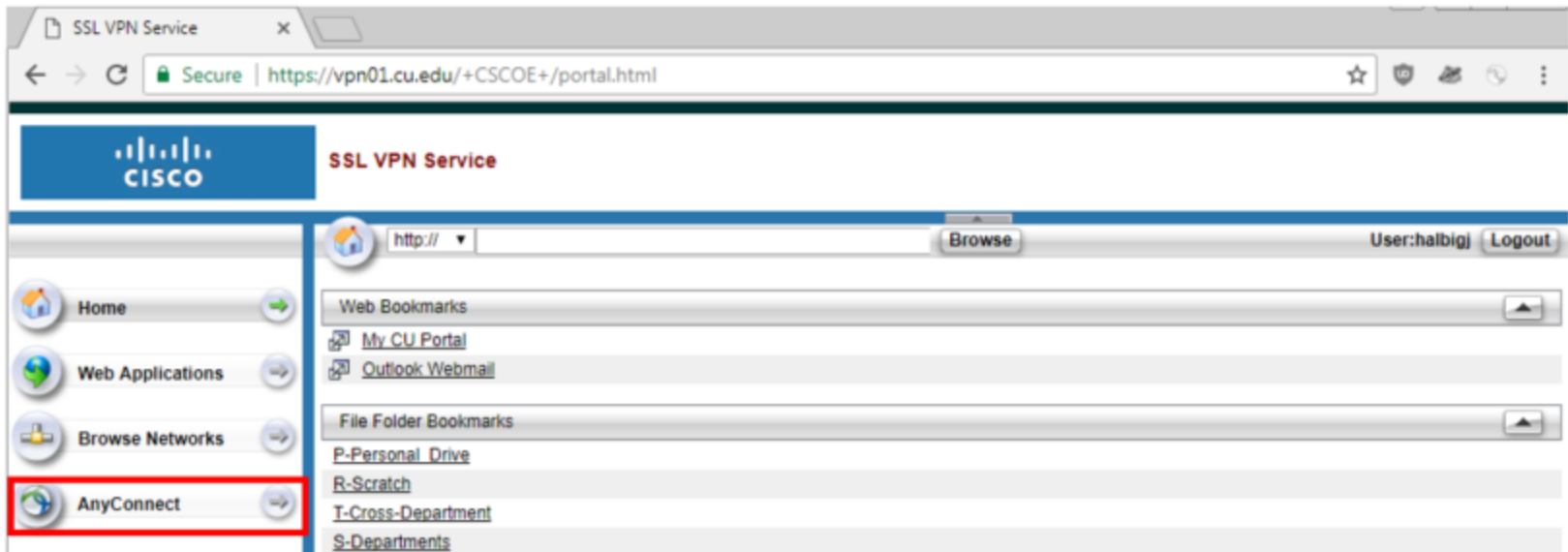
1. Open a browser and visit vpn01.cu.edu.
2. Log in with your network credentials. Usually this is your last name and first initial (for example, John Smith would be smithj).



Note: You may use your browser's bookmark menu to access websites and file shares.

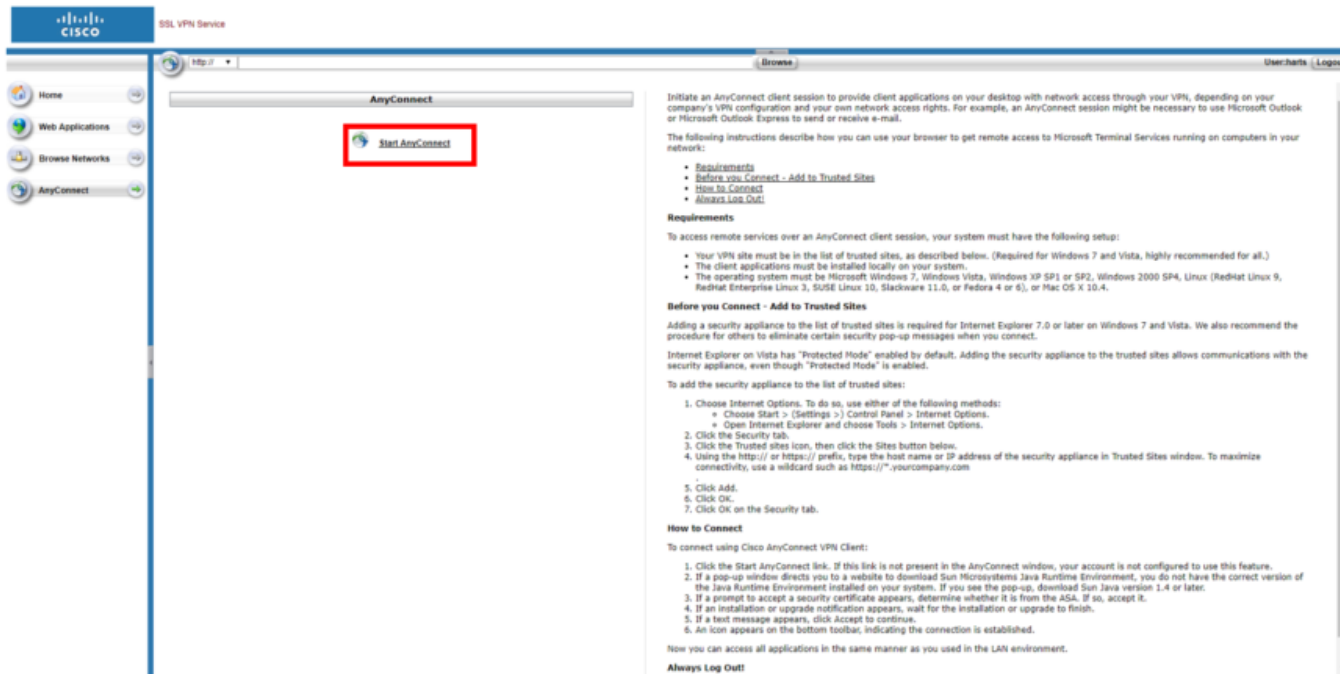
INSTALLING CISCO ANYCONNECT

1. To install Cisco AnyConnect on your computer, click **AnyConnect** in the left-hand menu.



INSTALLING CISCO ANYCONNECT

2. Click **Start AnyConnect** and follow the steps. If auto-install fails, click **AnyConnect VPN** to download the client.



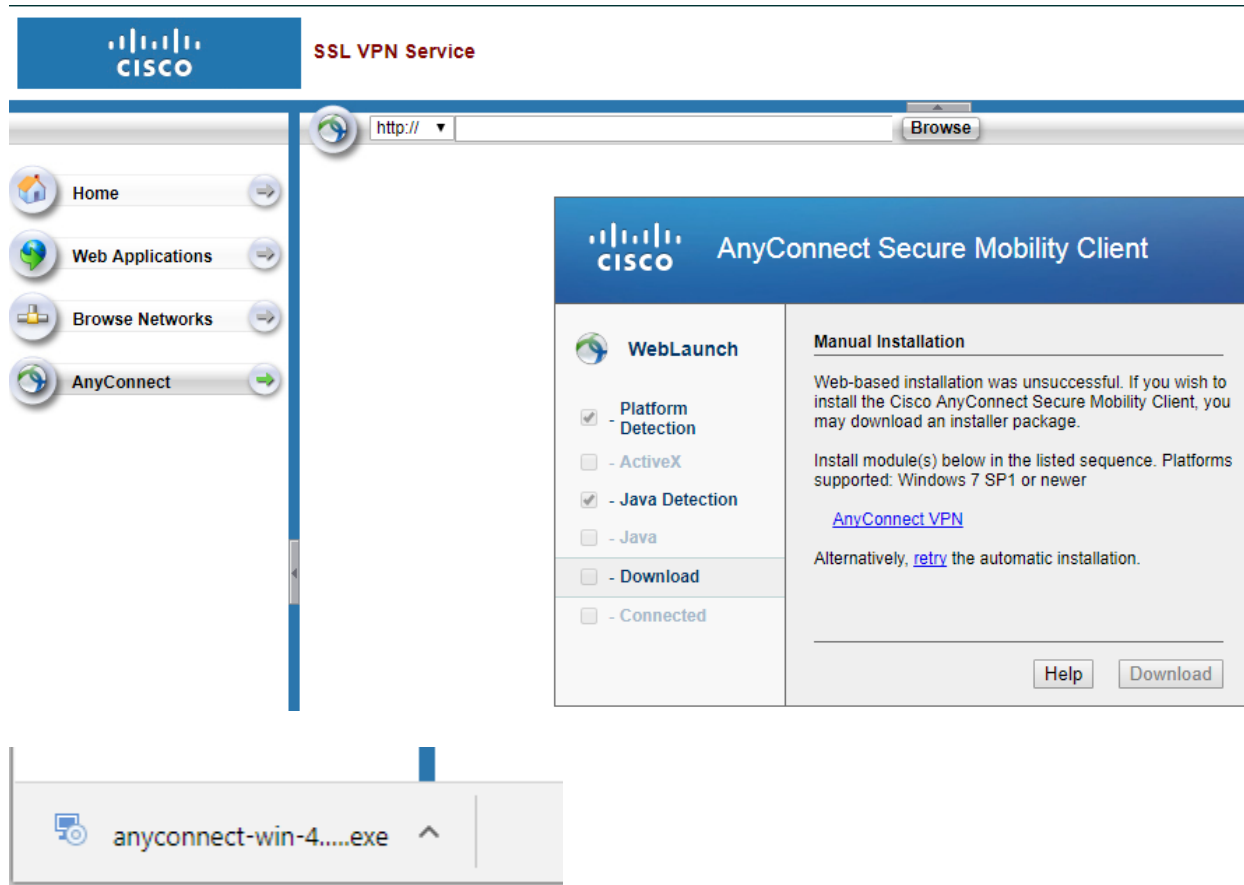
University of Colorado

Boulder | Colorado Springs | Denver | Anschutz Medical Campus

UNIVERSITY INFORMATION SERVICES

INSTALLING CISCO ANYCONNECT

3. When the download is done, open the file by clicking it.



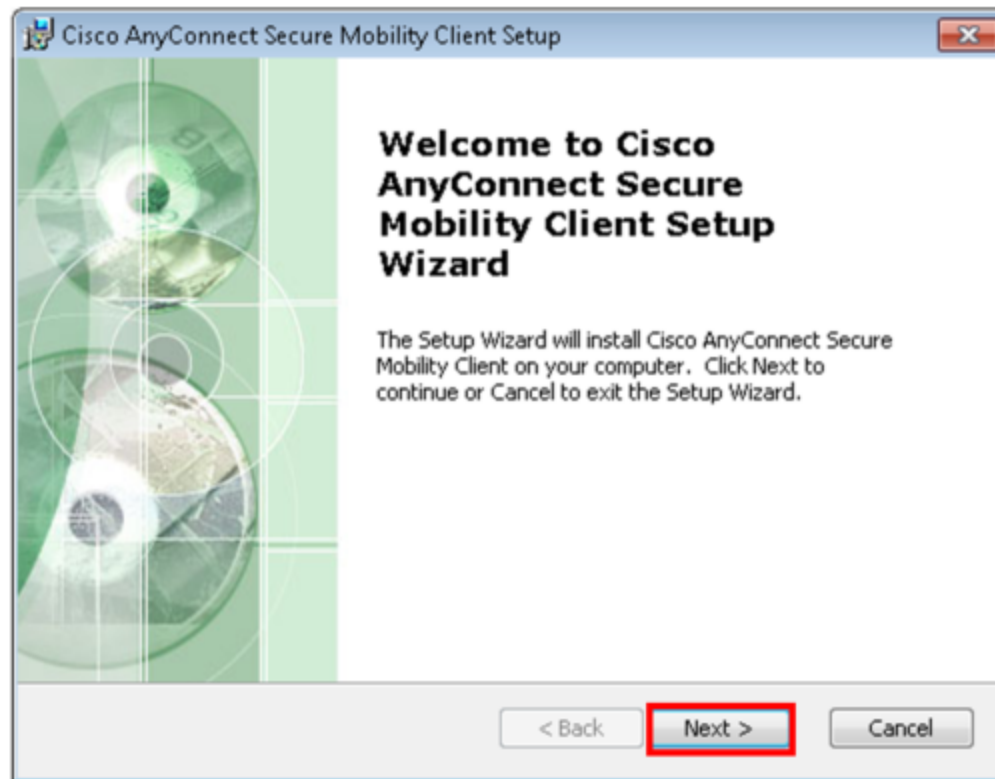
University of Colorado

Boulder | Colorado Springs | Denver | Anschutz Medical Campus

UNIVERSITY INFORMATION SERVICES

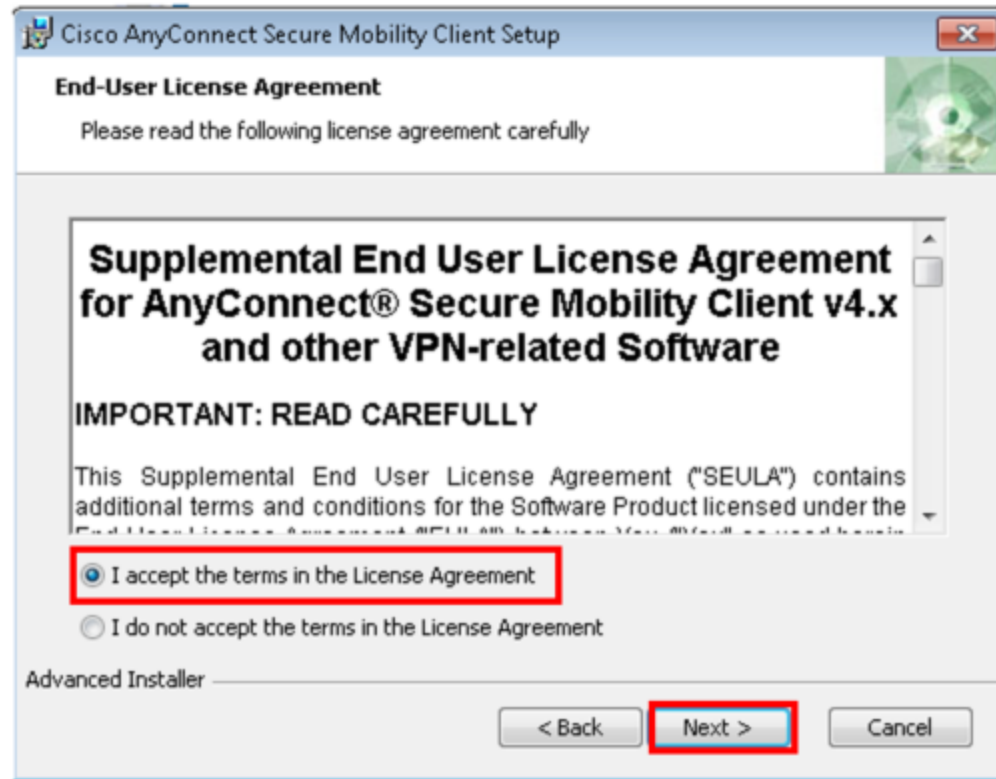
INSTALLING CISCO ANYCONNECT

4. Click **next** when the installer opens.



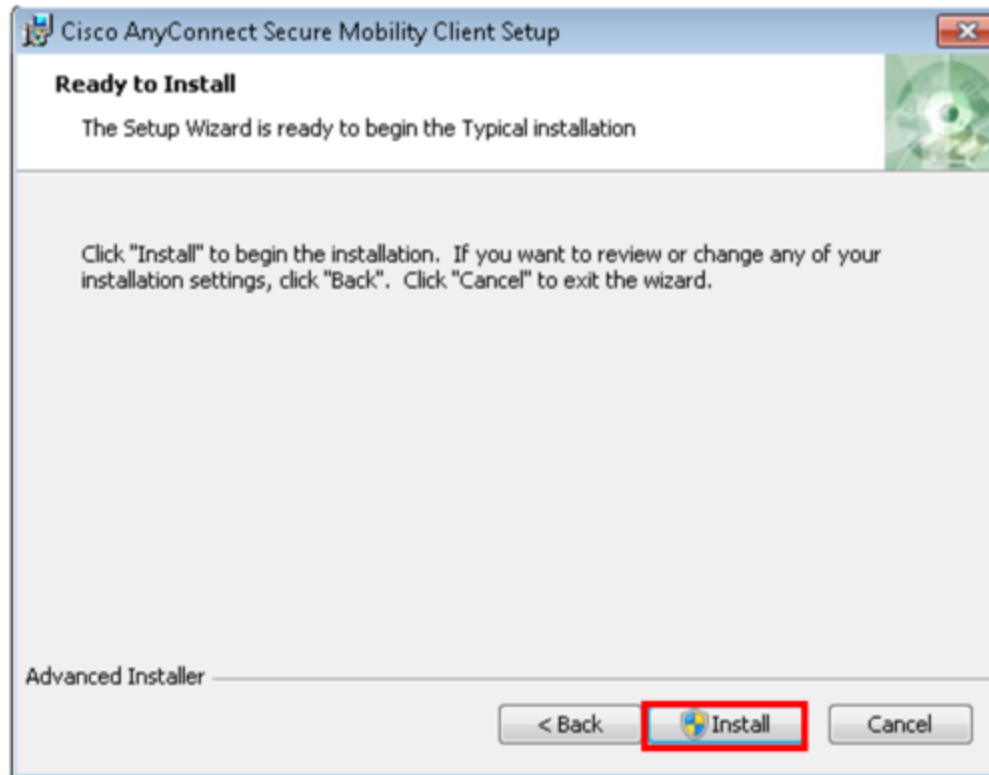
INSTALLING CISCO ANYCONNECT

5. Accept the terms and select **next**.



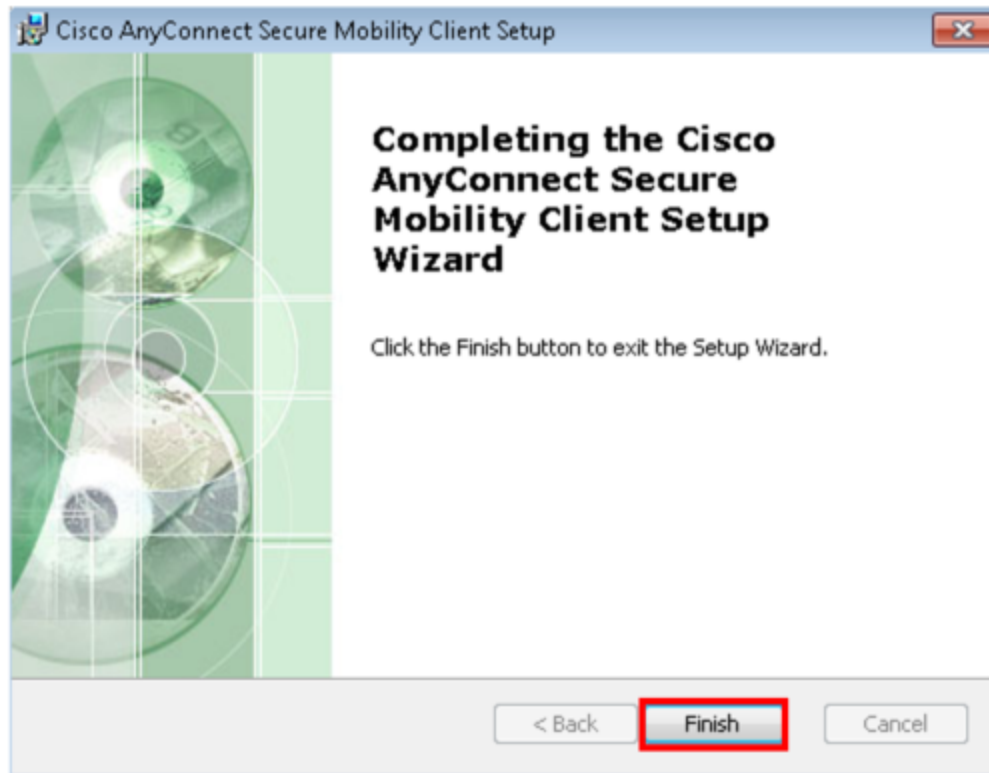
INSTALLING CISCO ANYCONNECT

6. Install.



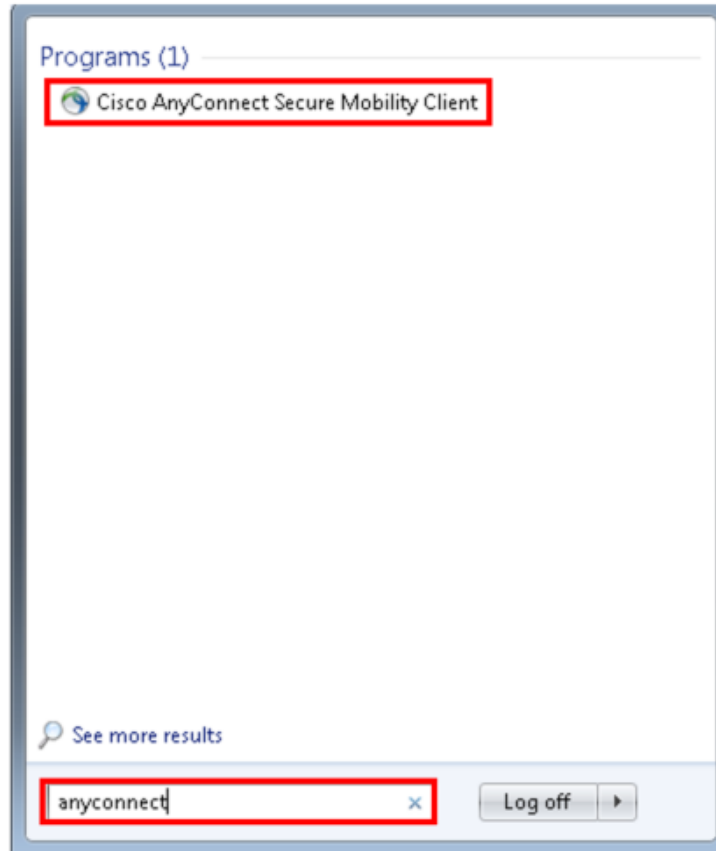
INSTALLING CISCO ANYCONNECT

7. Click **yes** to install or enter the admin password if prompted.
8. When installation is complete, click **finish**.



INSTALLING CISCO ANYCONNECT

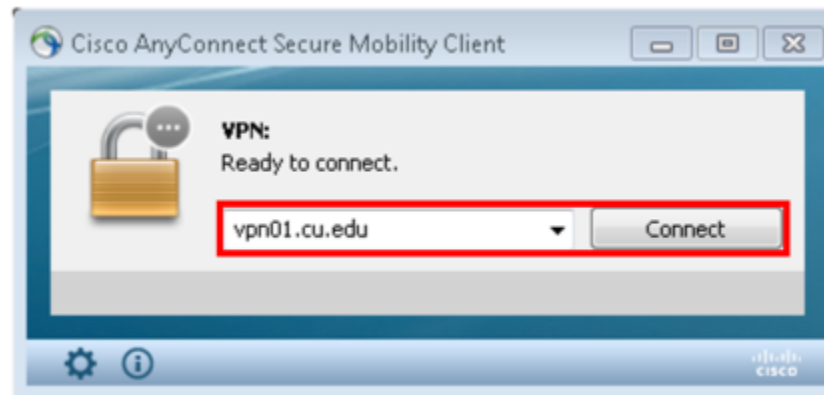
9. Open the **Start** menu and search for AnyConnect.



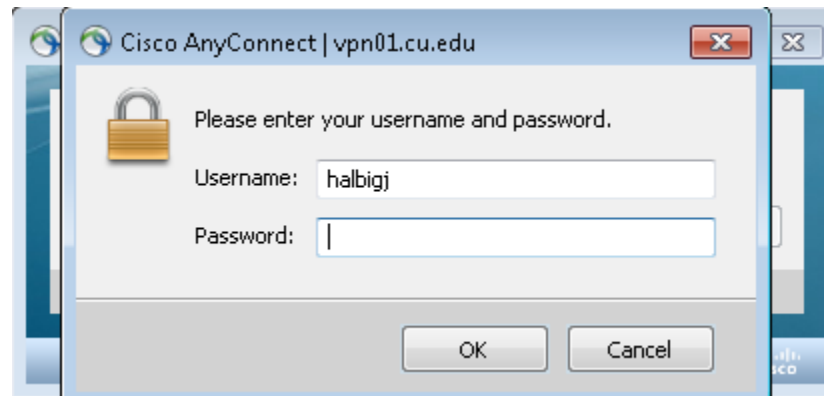
INSTALLING CISCO ANYCONNECT

10. Select **Cisco AnyConnect**.

11. When AnyConnect opens in the box, type **vpn01.cu.edu** and click **connect**.



12. Enter your network credentials (the same username and password you use to log into your computer).



INSTALLING CISCO ANYCONNECT

13. Once connected, the login box will disappear signaling that you are set up and ready to use Cisco AnyConnect.

**If you need additional assistance, please contact the
UIS Service Desk at help@cu.edu.**



University of Colorado

Boulder | Colorado Springs | Denver | Anschutz Medical Campus

UNIVERSITY INFORMATION SERVICES