

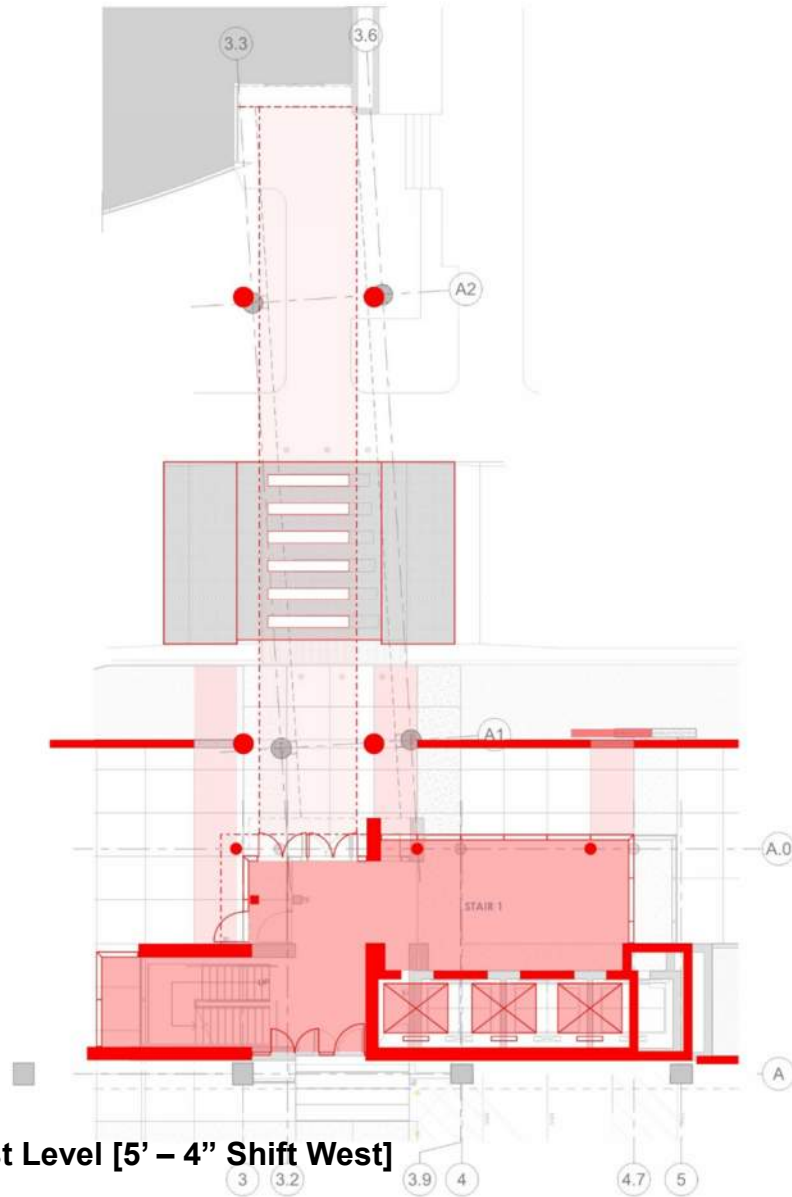
UCHealth – University of Colorado Hospital Parking Garage 2 Pedestrian Bridge

University of Colorado Design Review Board
Schematic Design
June 15, 2021

DRB Preliminary Feedback

- What is the status of the Garage 2 Project?
- Is there an opportunity to look at the overall alignment of the bridge as it relates to the ACP entrance?
- Bridge structure?
- Can the overall bridge façade be level instead of following the slope of the bridge?
- How do the bridge mullions relate to the garage mullions and ACP mullions?
- What do the selected bridge materials/finishes relate to?
- What does the selected ceramic frit pattern relate to?

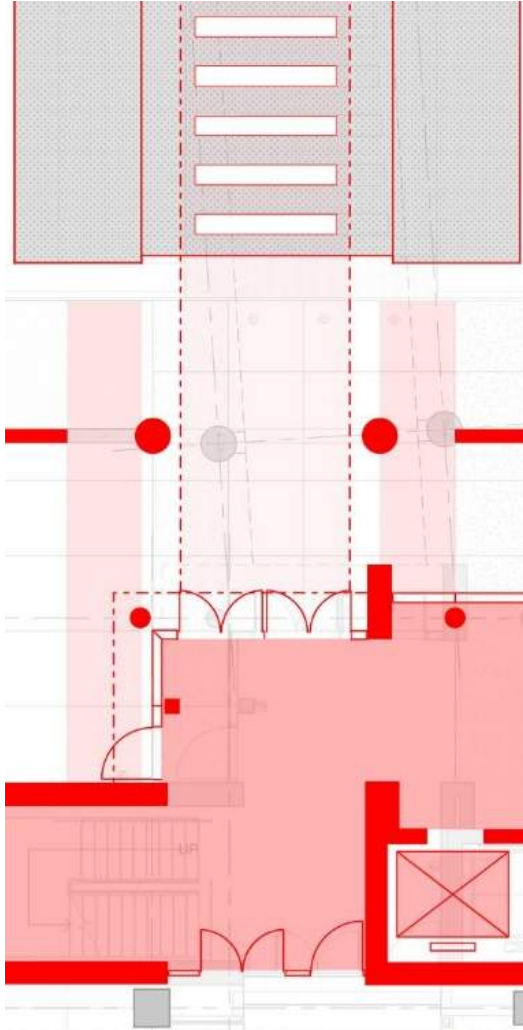
Floor Plan at Ground



Garage 2 Level P0 to ACP First Level [5' – 4" Shift West]

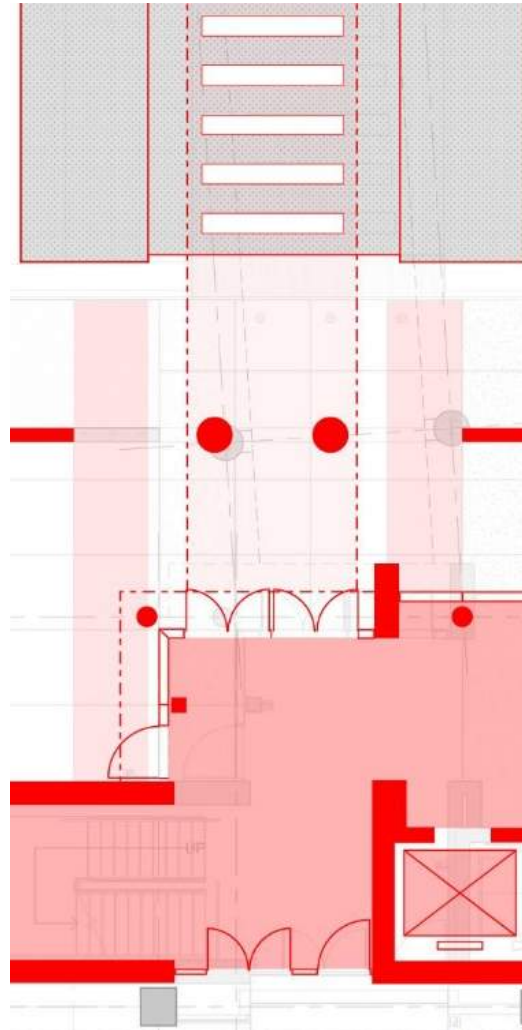
Structural Studies

Columns Outboard of Bridge

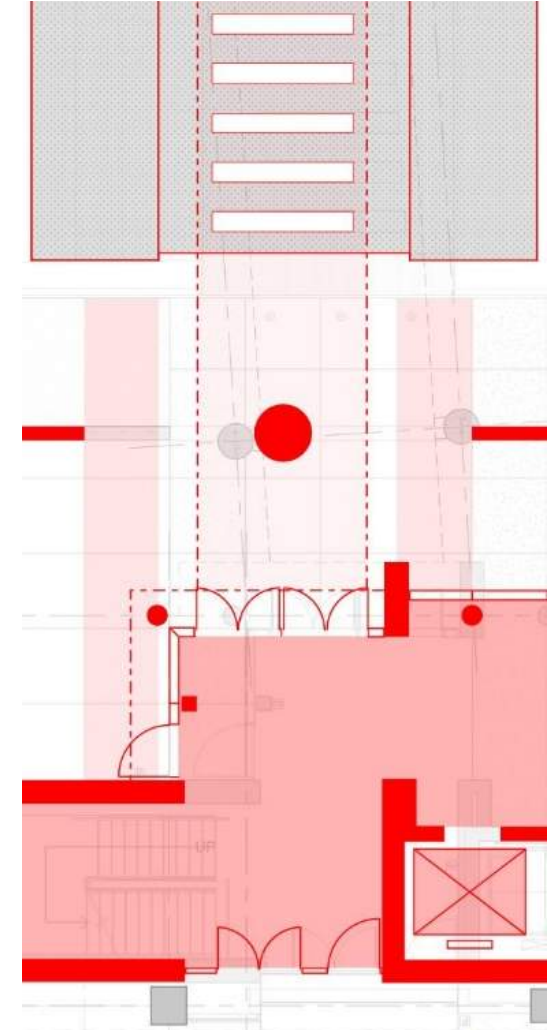


Structural Studies at Grade

Columns Align with Truss Above



Centered Single Column



uhealth

Structural Studies



Perspective of Columns with Beam Spanning Above Bridge

Structural Studies



Perspective of Columns with Beam Spanning Below Bridge

Structural Studies



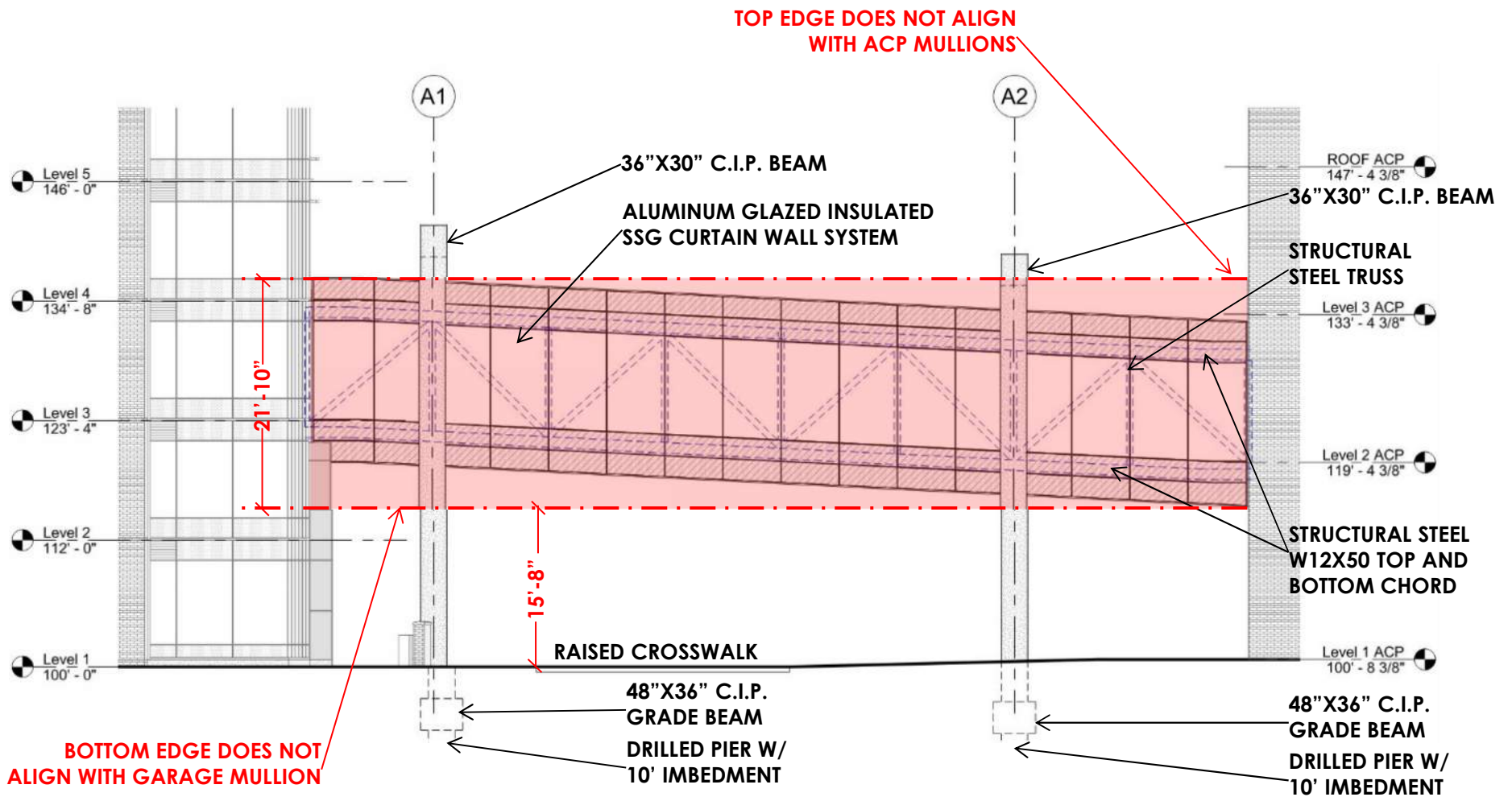
Perspective of Columns with Beam Spanning Above Bridge

Structural Studies



Perspective of Columns with Beam Spanning Below Bridge

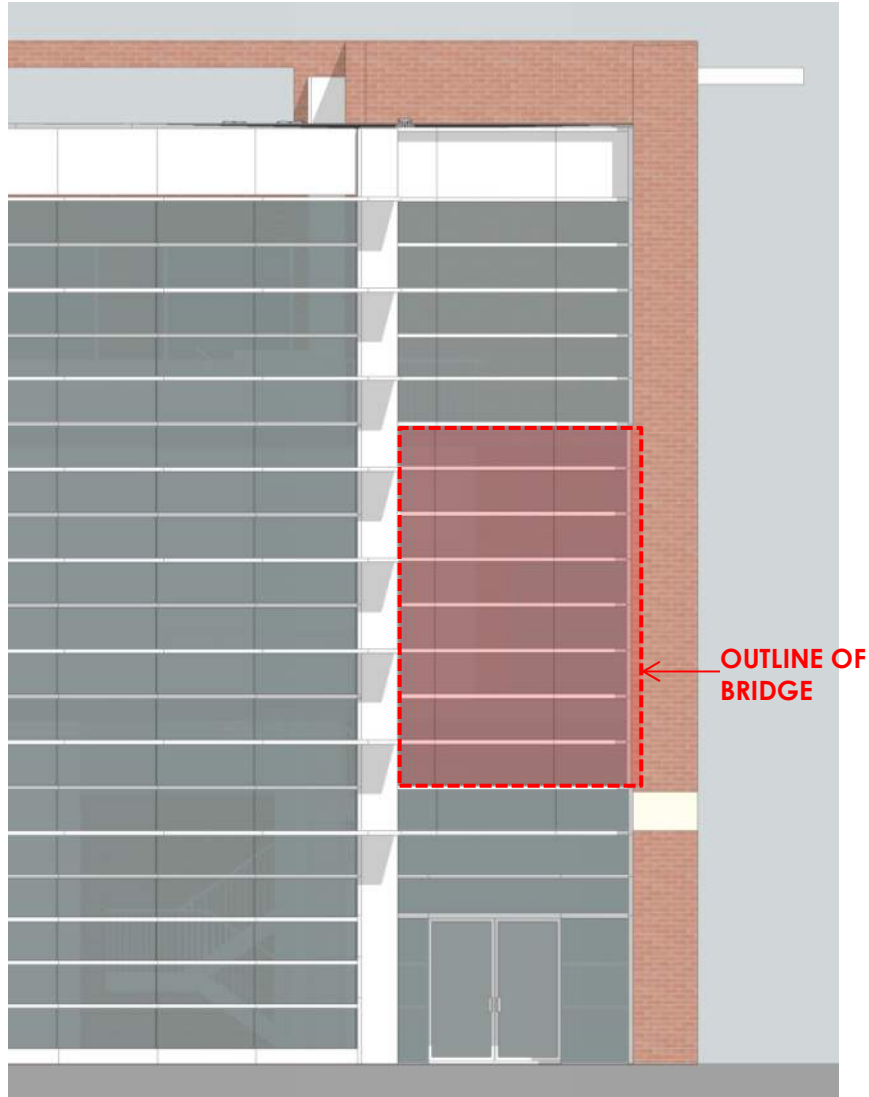
Bridge Elevation



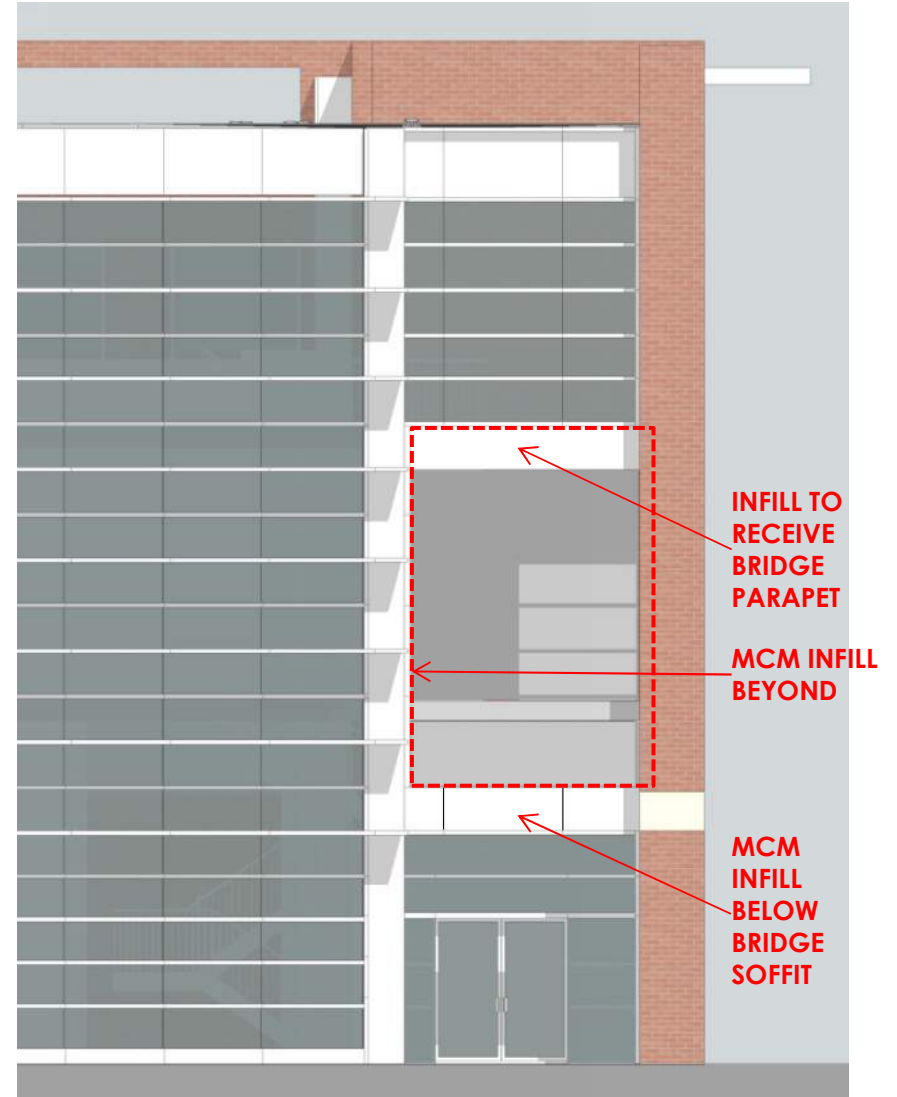
Bridge Elevation – East [Level Façade]

uchealth

ACP Elevation



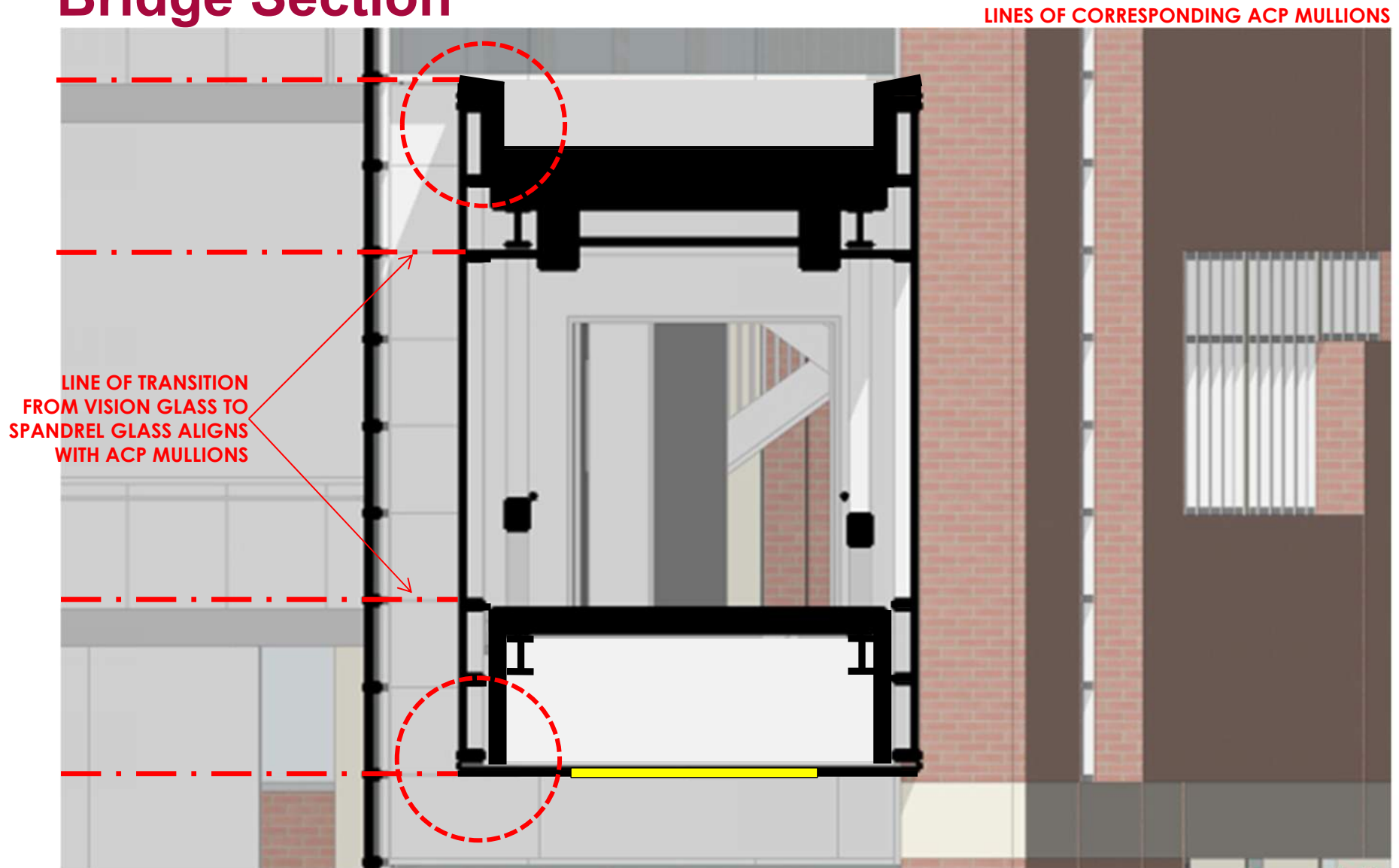
ACP Existing Elevation



ACP Modified Elevation

uhealth

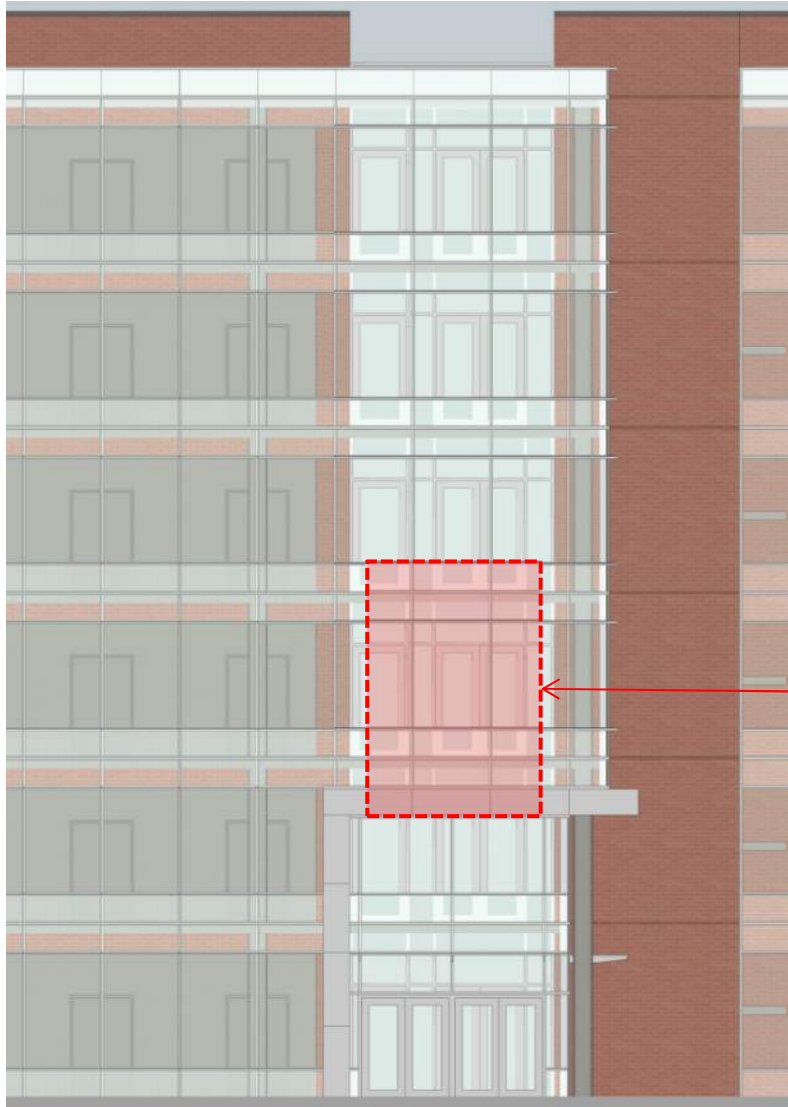
Bridge Section



Section Through Pedestrian Bridge [View of ACP]

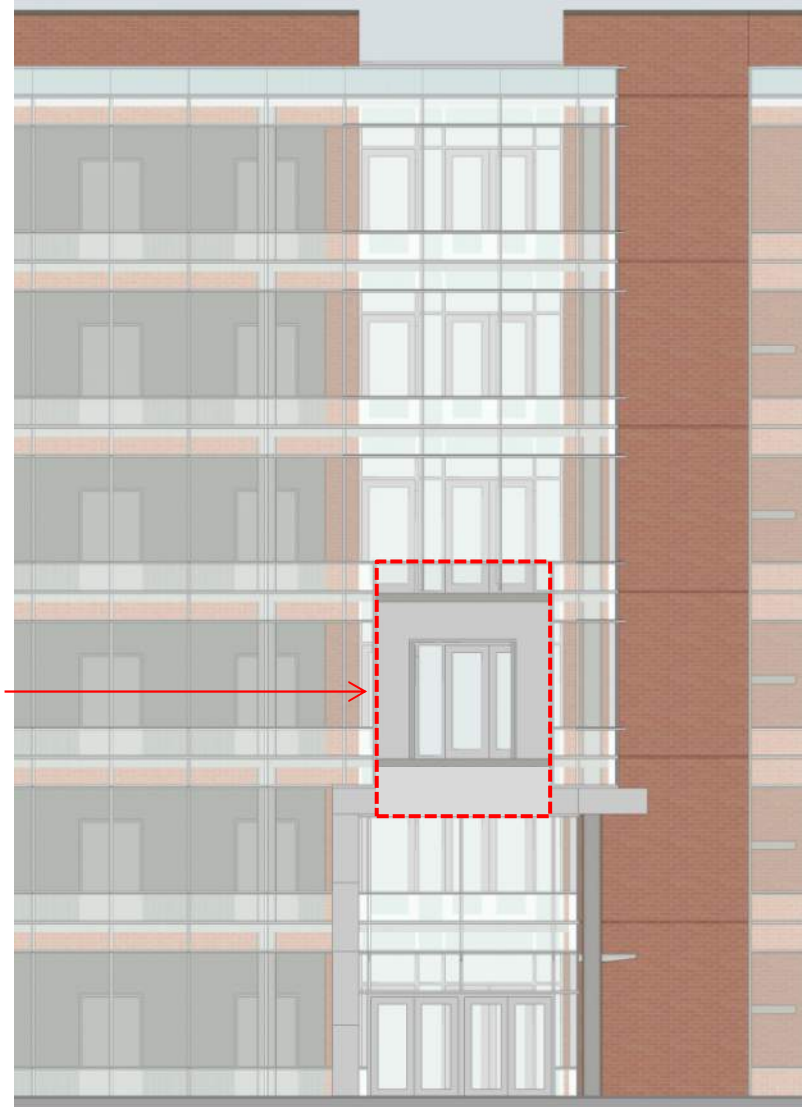
uchealth

Garage 2 Elevation



Garage 2 Elevation

OUTLINE OF
BRIDGE

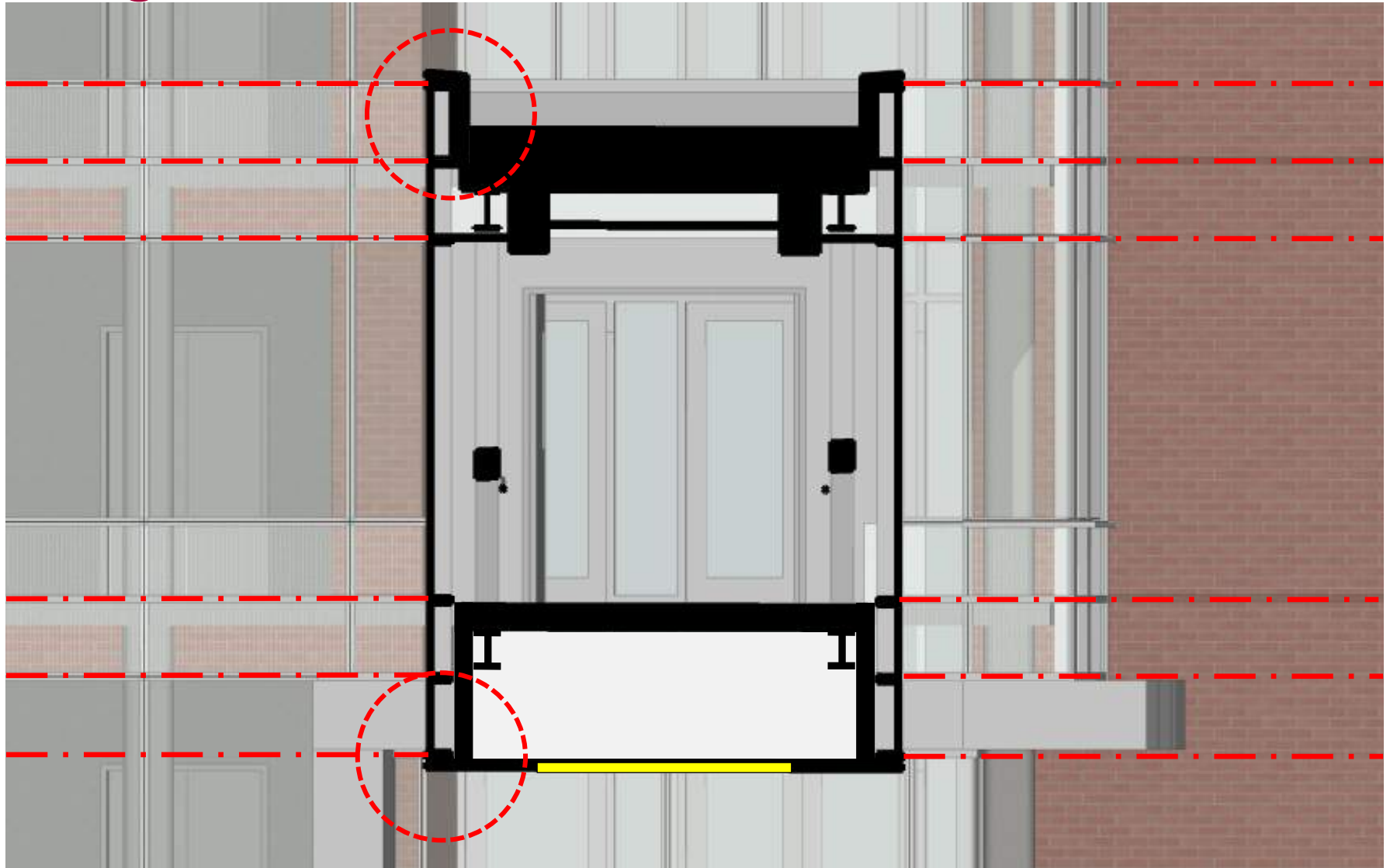


Garage 2 Elevation w/ Bridge

uhealth

Bridge Section

LINES OF CORRESPONDING GARAGE MULLION

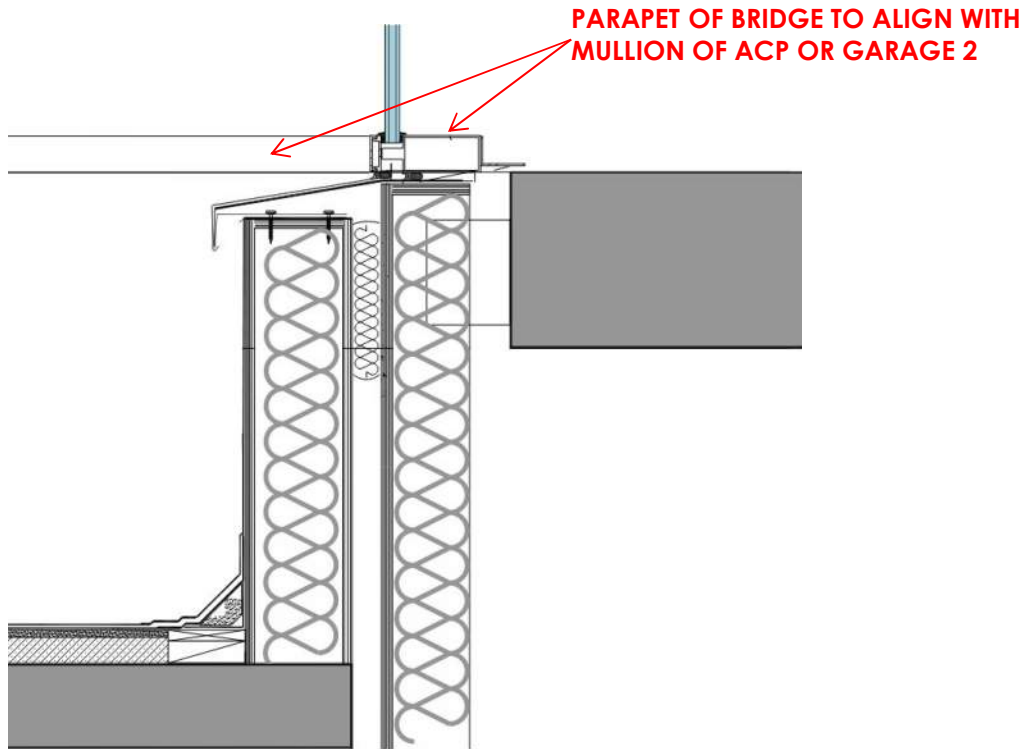


Section Through Pedestrian Bridge [View of Garage]

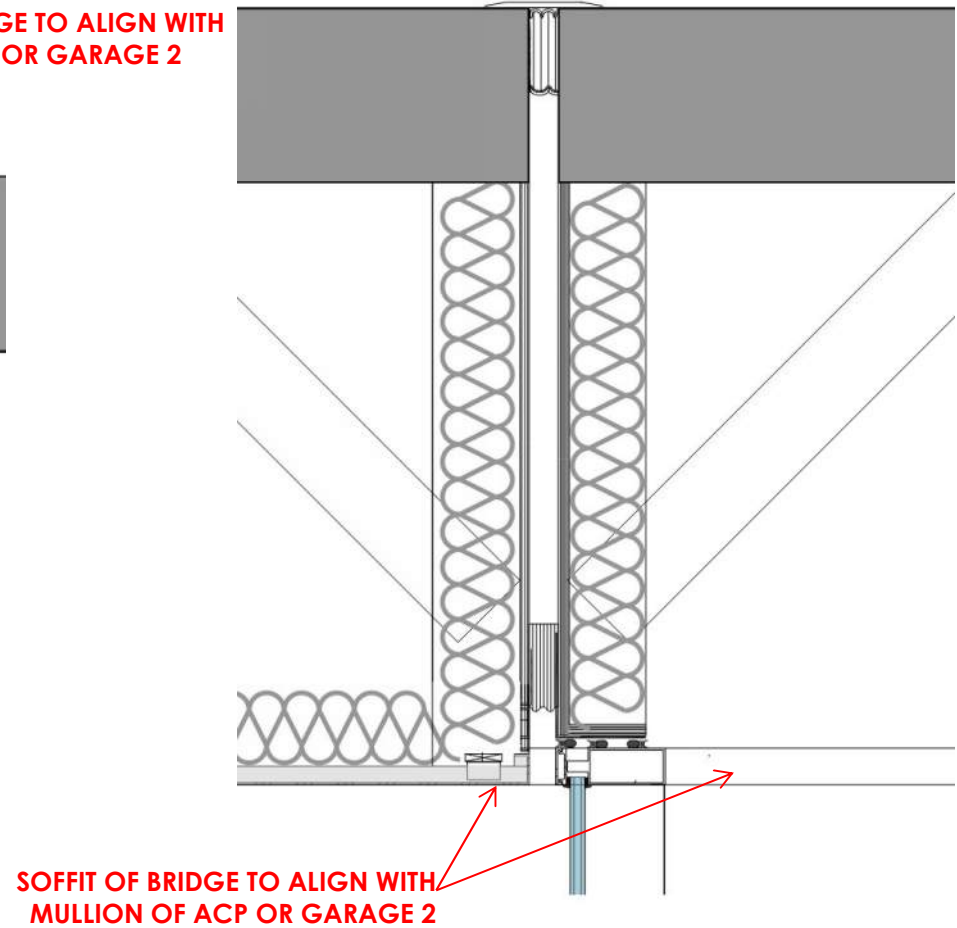
uchealth

Typical Connection Details

Typical Parapet Connection Detail



Typical Soffit Connection Detail



Typical Soffit and Parapet Connection Detail

Agenda

I. Introductions

II. Site Layout

III. Pedestrian Bridge

I. Introductions

A/E Team



Pact Studios, LLC – Architectural Design



Martin & Martin – Civil and Structural Engineering



Specialized Engineering Solutions – MEP Design; Low Voltage; Lighting Design



Kimley-Horn – Landscape Architecture



Felsburg Holt & Ullevig – Traffic, Transportation, and Parking Study



Lerch Bates – Vertical Transportation



Fd2s – Graphic and Signage Design



II. Site Layout



uchealth

Campus Plan



UCH Anschutz Campus

Overall Site Plan



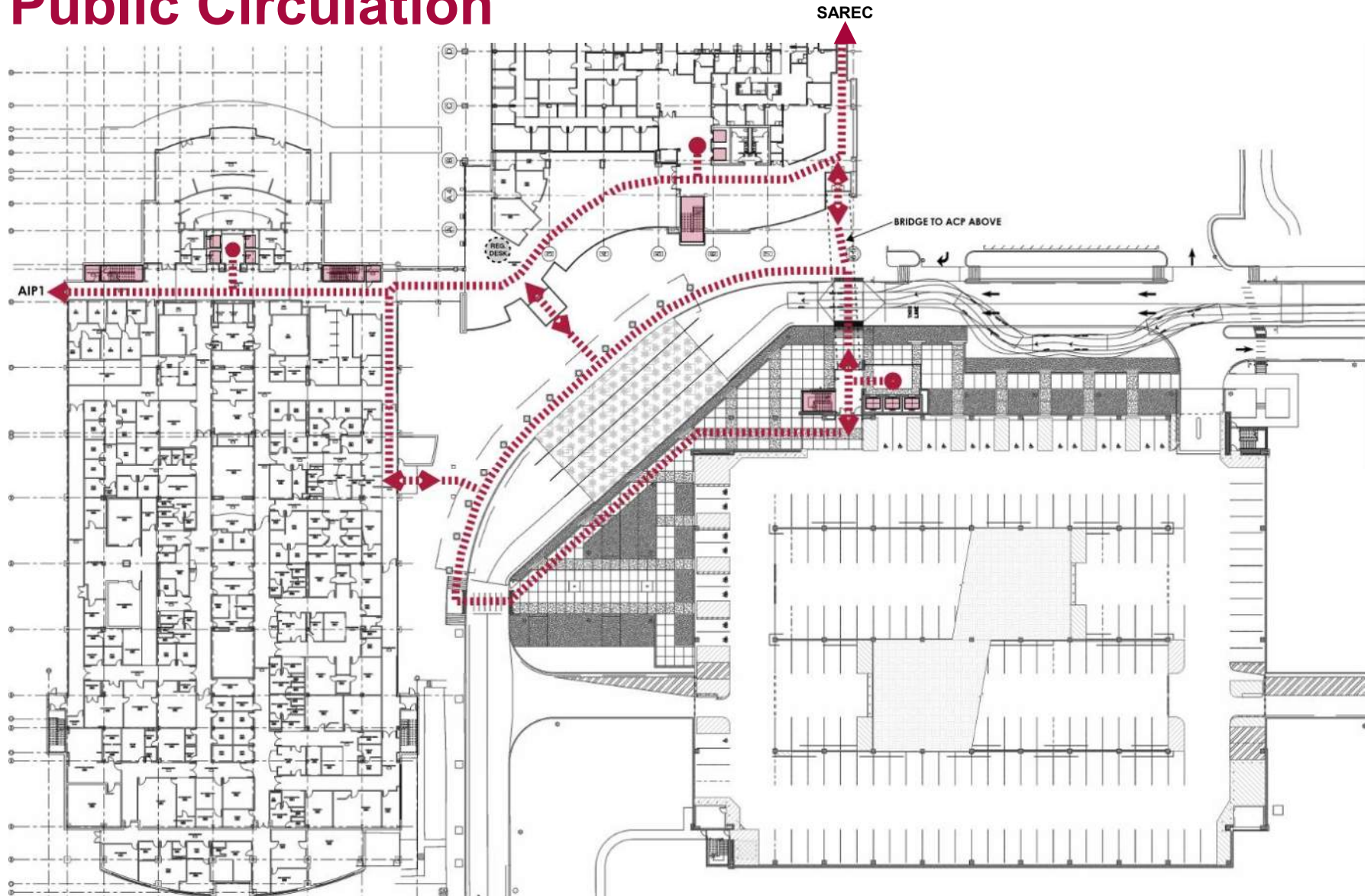
Garage 2 Site Plan

Overall Site Plan



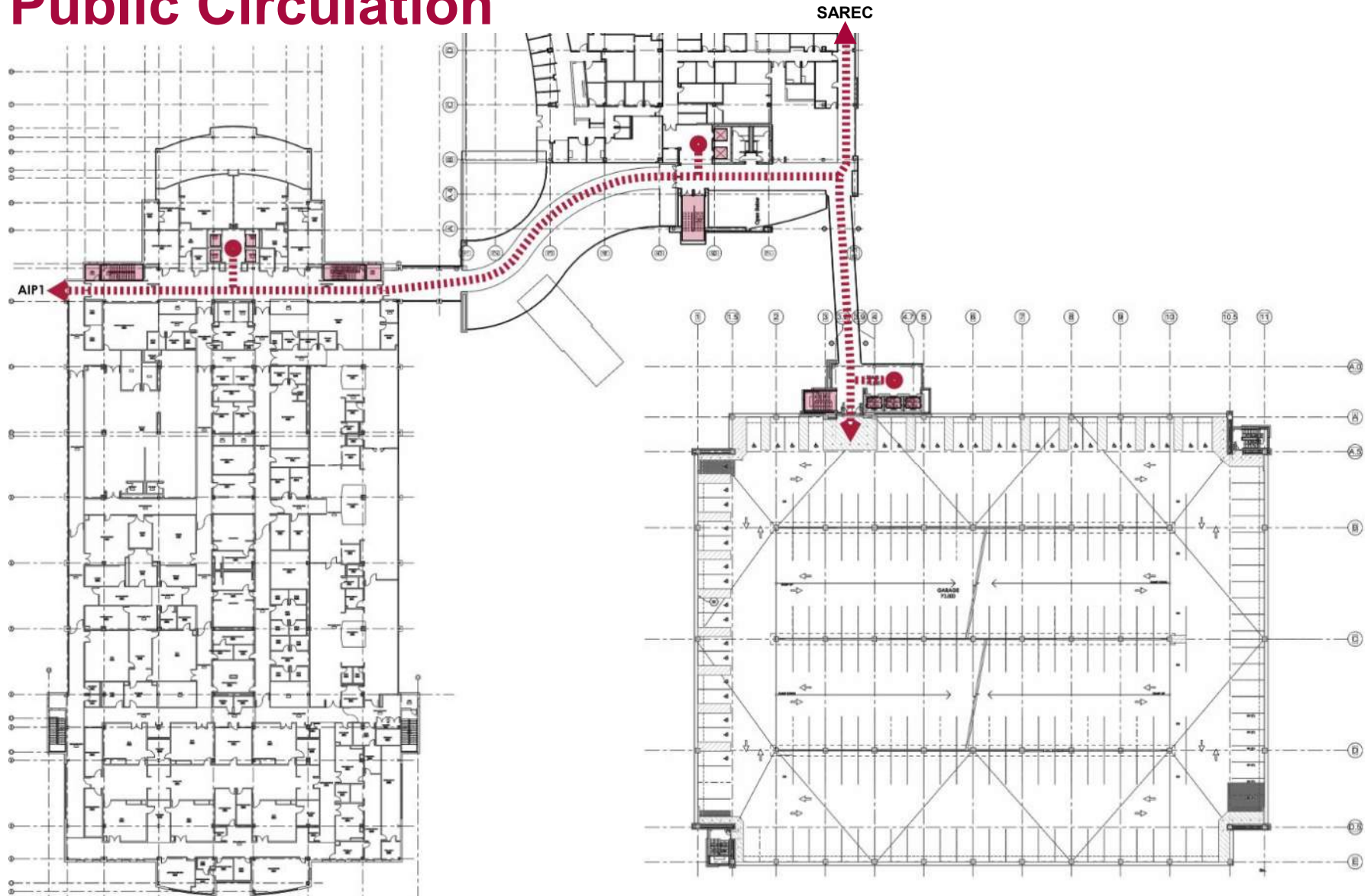
Garage 2 Site Plan – Pedestrian Bridge

Public Circulation



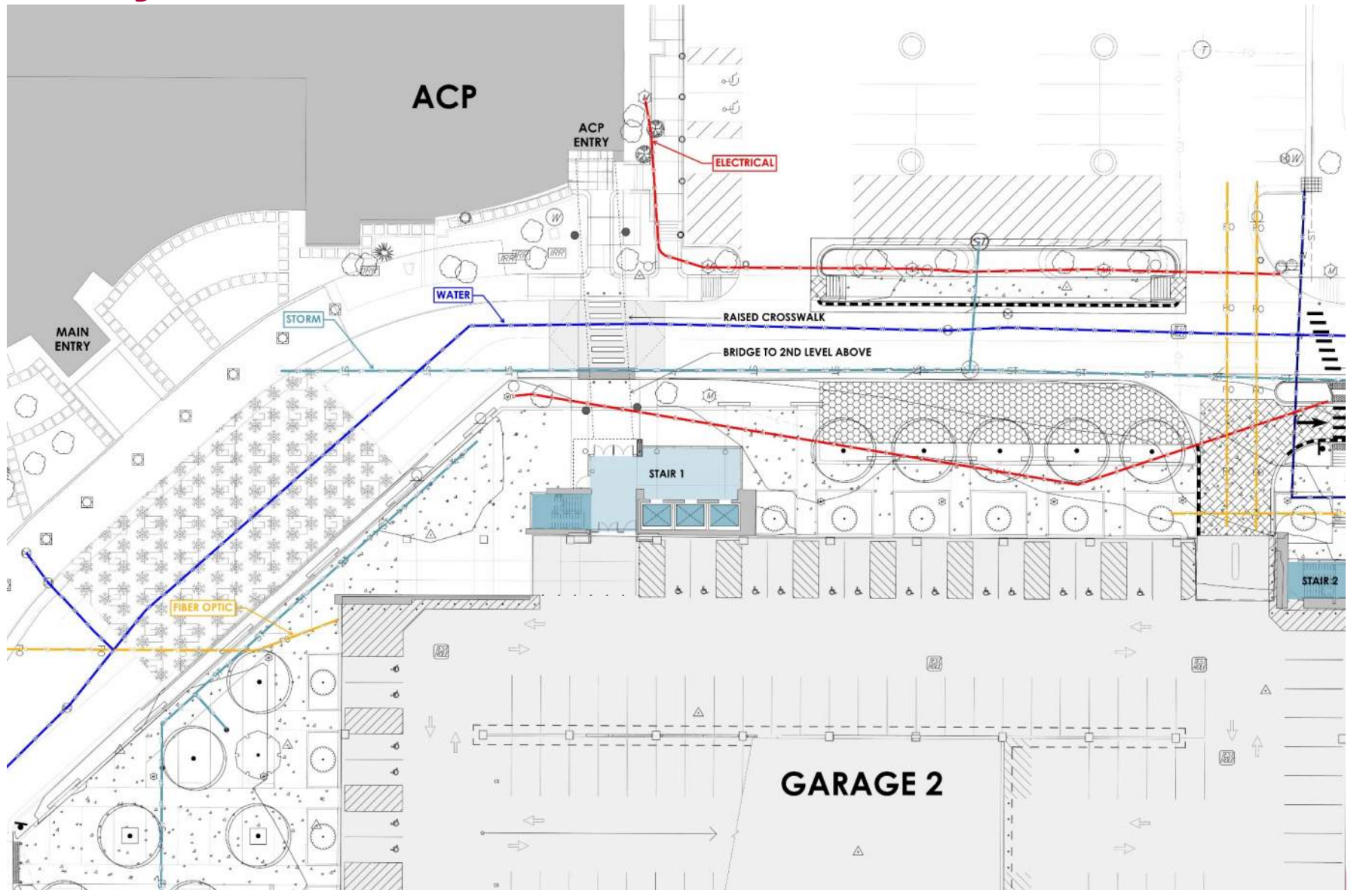
First Level - Circulation

Public Circulation

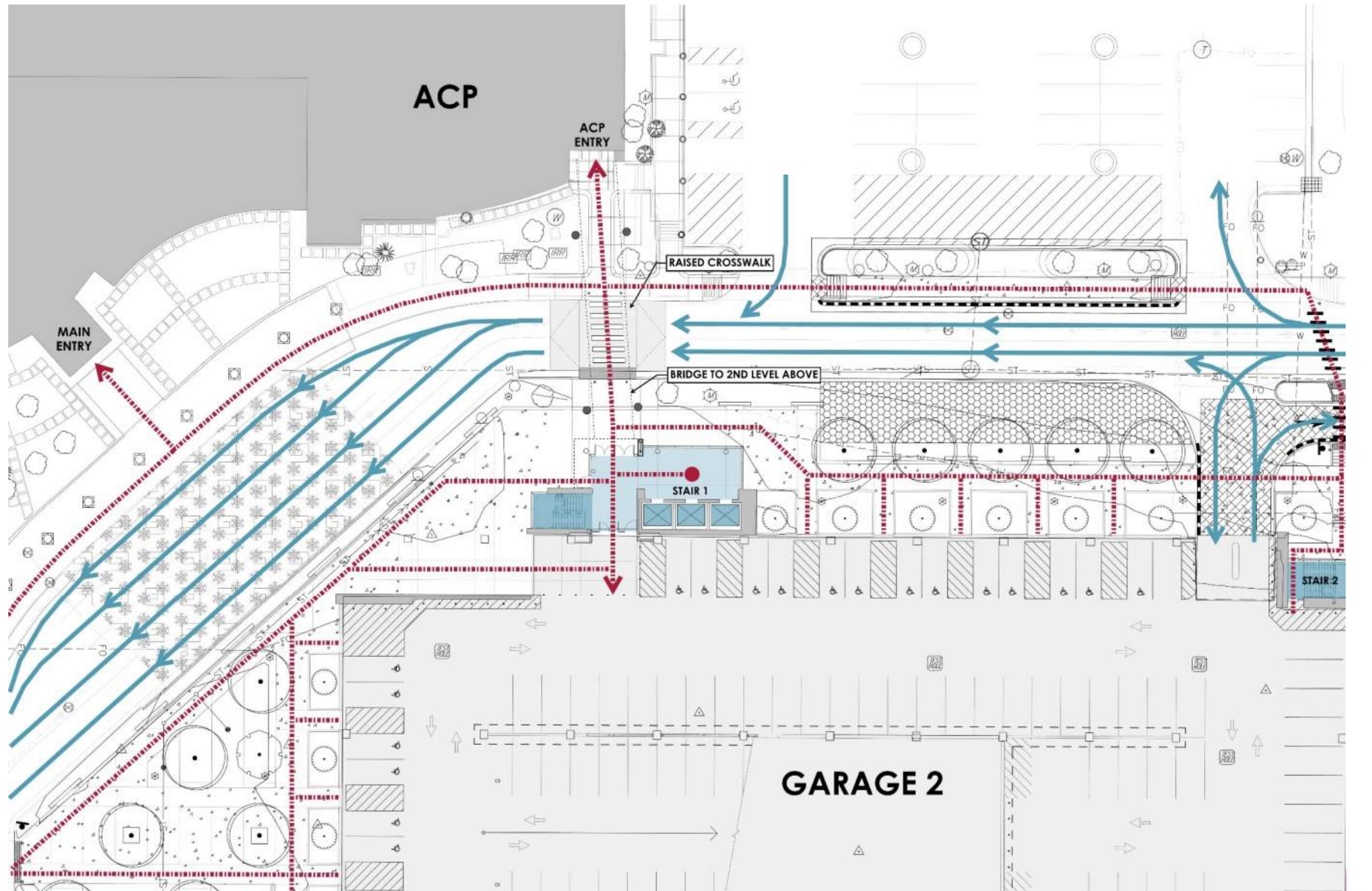


Second Level - Circulation

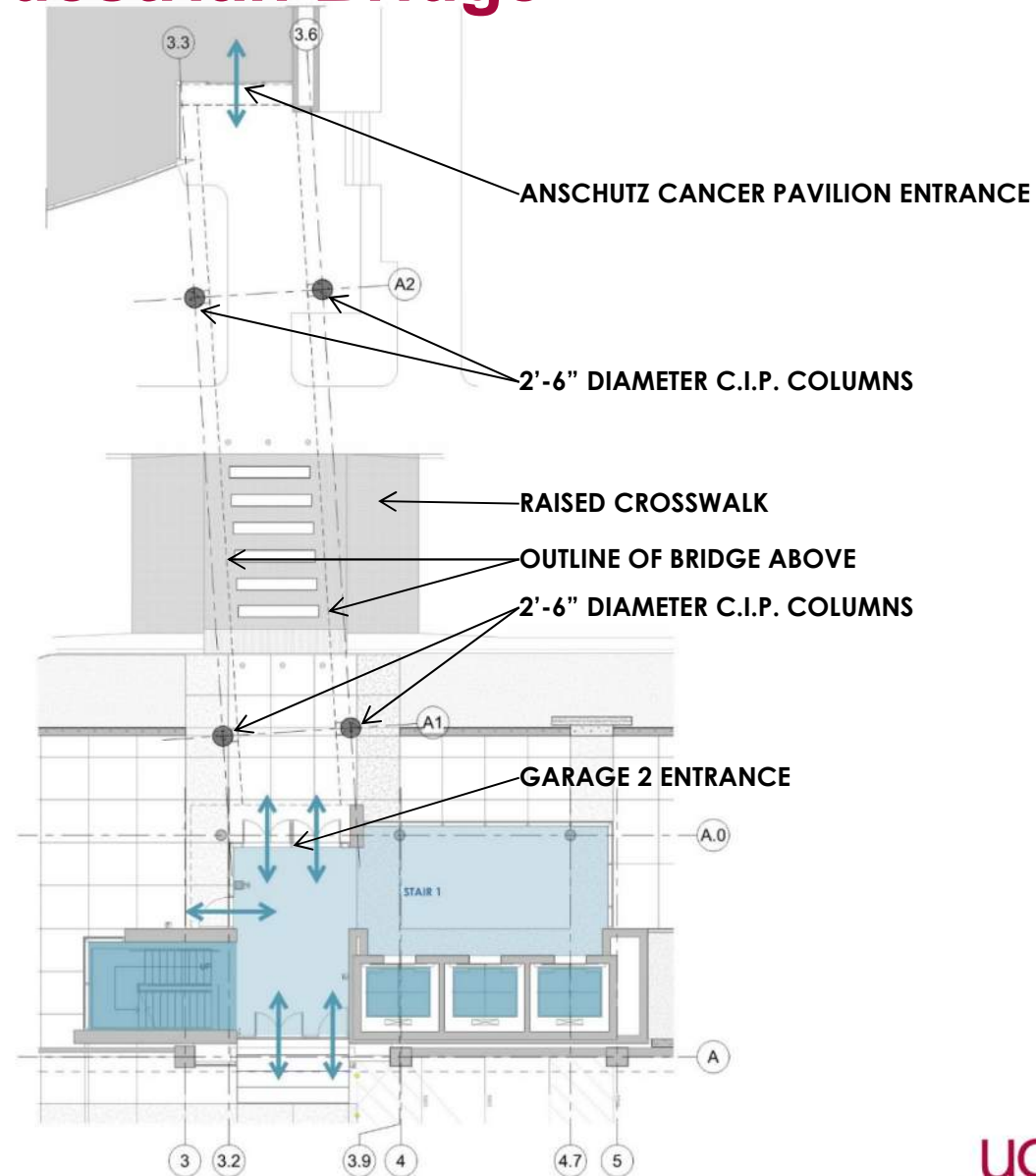
Utility Plan



Pedestrian and Vehicular Circulation



Site Plan at Pedestrian Bridge



Site Plan – Stair 1 to ACP

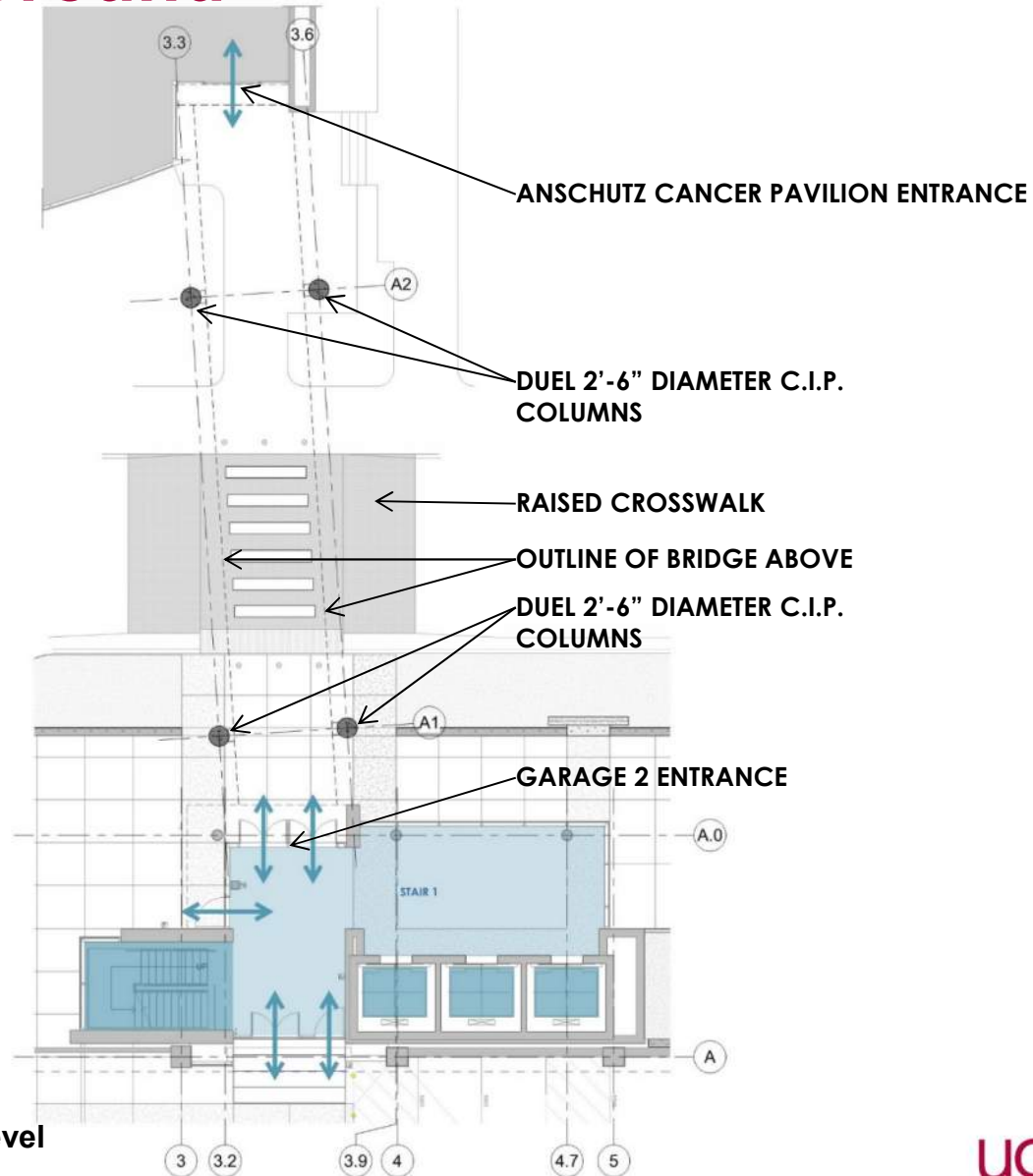
III. Pedestrian Bridge



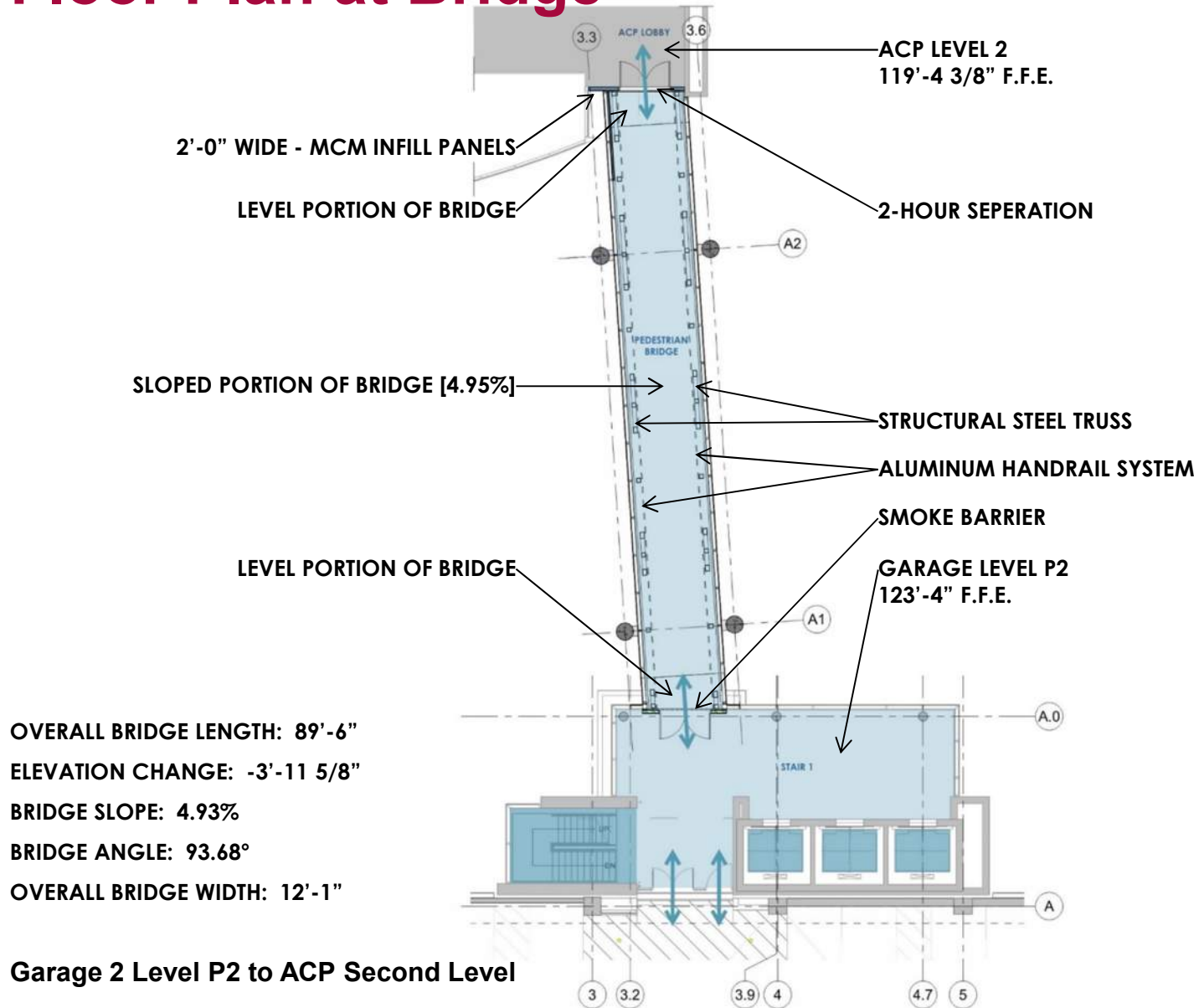
Floor Plan at Ground

OVERALL BRIDGE LENGTH: 89'-6"
 ELEVATION CHANGE: -3'-11 5/8"
 BRIDGE SLOPE: 4.93%
 BRIDGE ANGLE: 93.68°
 OVERALL BRIDGE WIDTH: 12'-1"

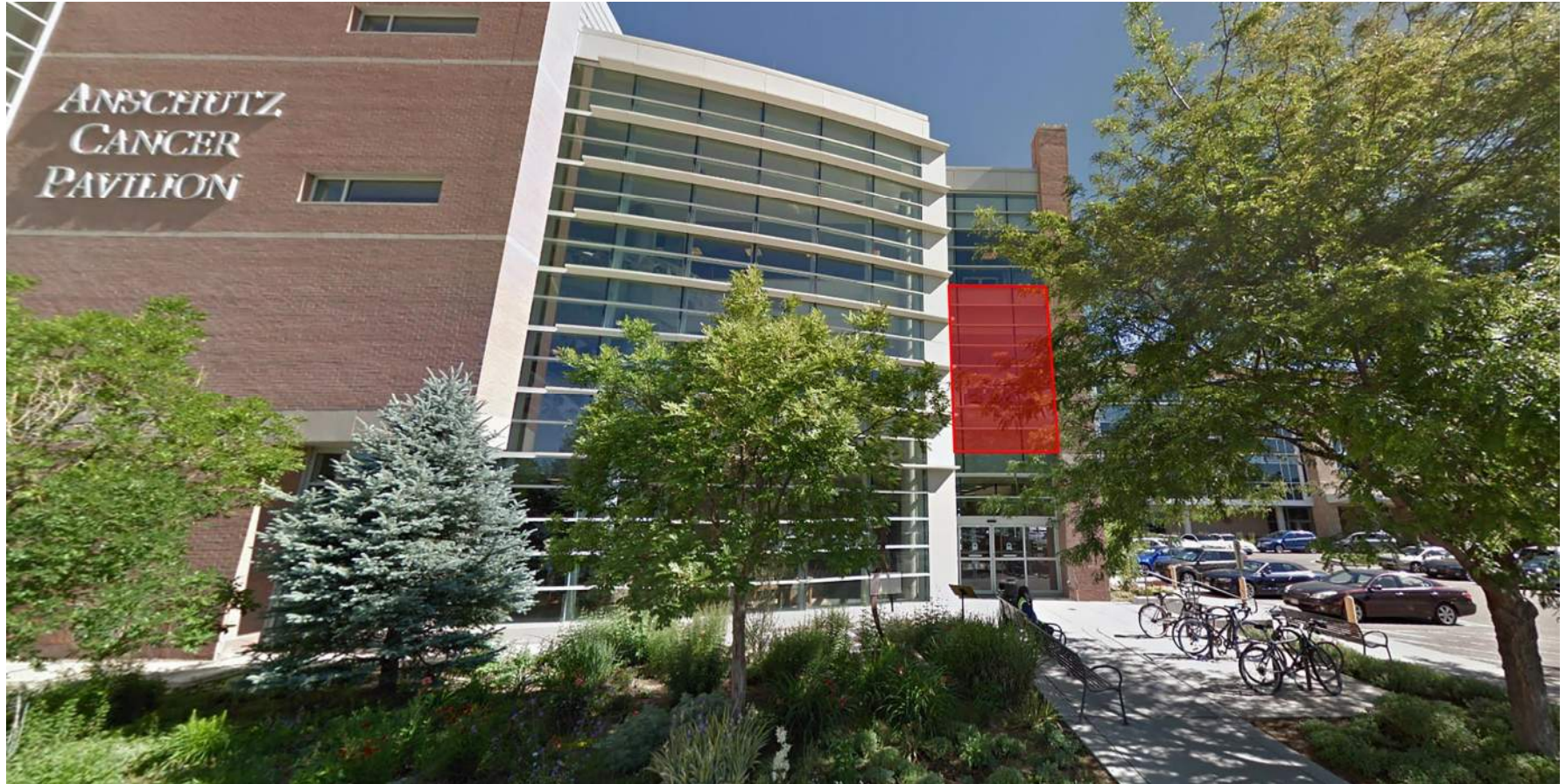
Garage 2 Level P0 to ACP First Level



Floor Plan at Bridge



ACP Connection



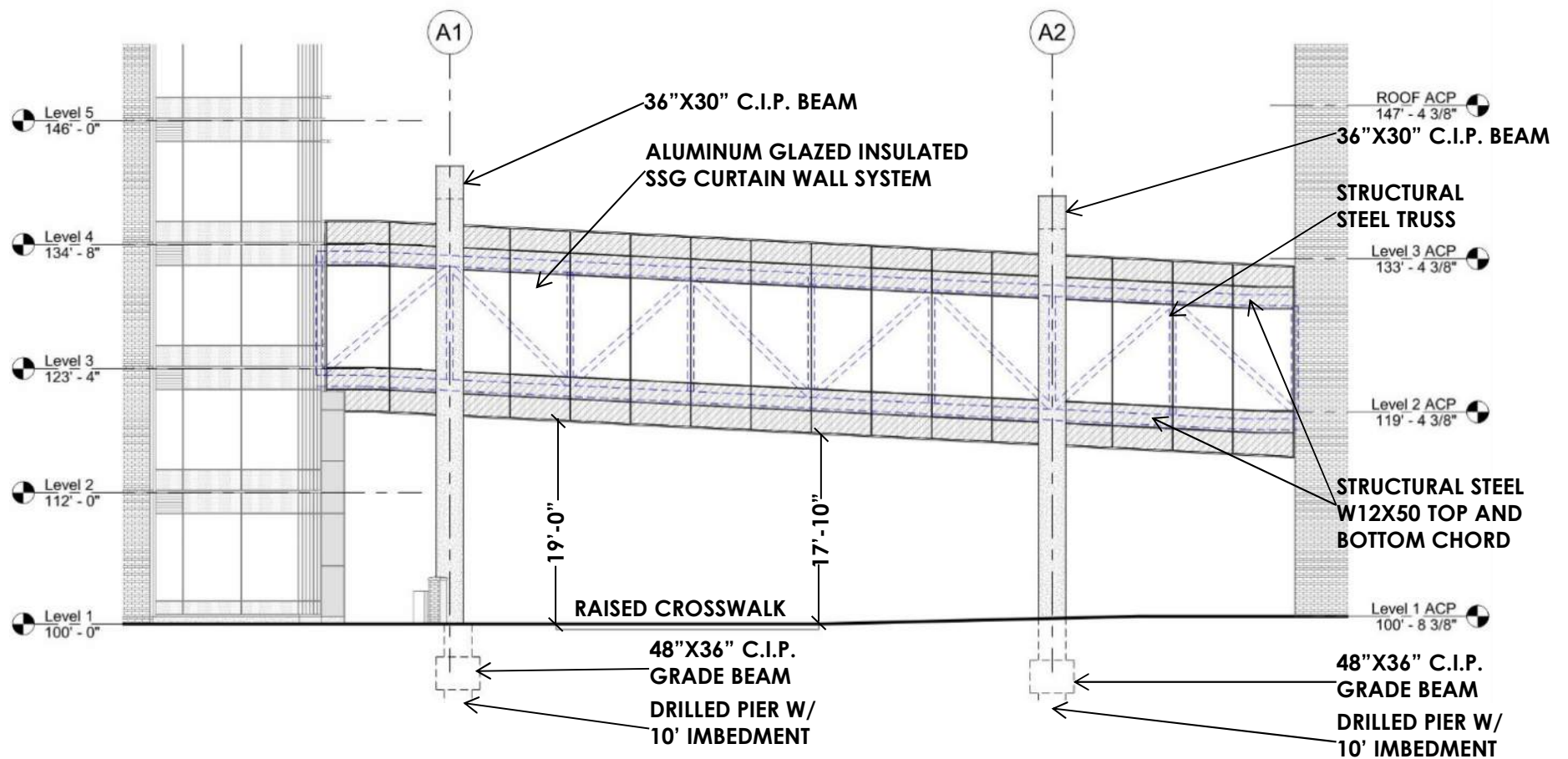
- Existing curtain wall system to be removed to receive pedestrian bridge from Garage 2 in highlighted area
- Two-hour separation to be constructed at face of ACP
- MCM infill panels to be installed at west of pedestrian bridge – jointwork to align with mullions
- Soffit of bridge to align with horizontal mullion of ACP
- Parapet cap of bridge to align with third level of ACP

Garage 2 Connection



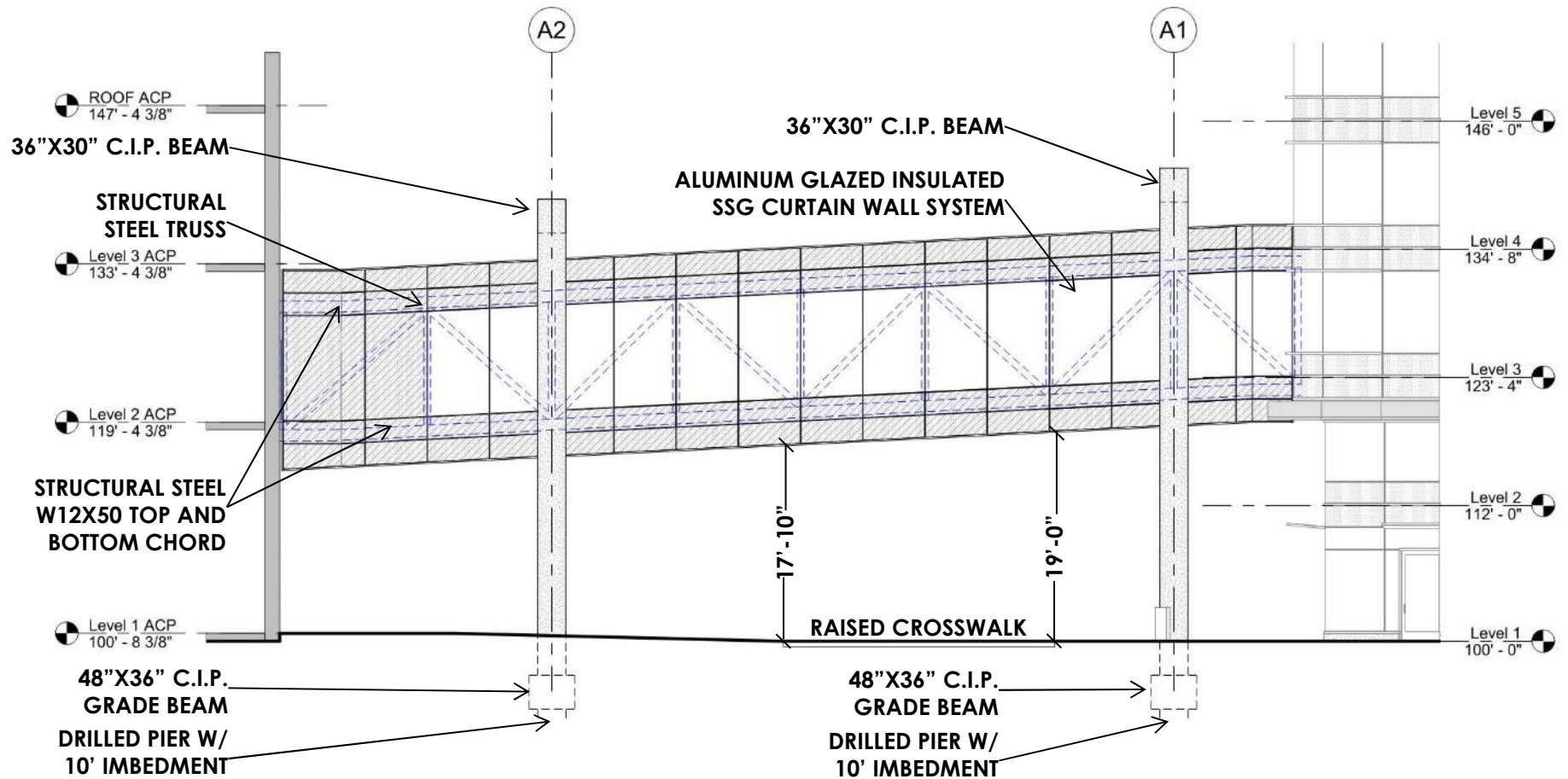
- Bridge to be centered over main entry of stair 1
- Smoke barrier to be constructed at face of stair 1
- Soffit of bridge to align with MCM canopy
- Parapet cap of bridge to align with horizontal mullion on stair 1

Bridge Elevation



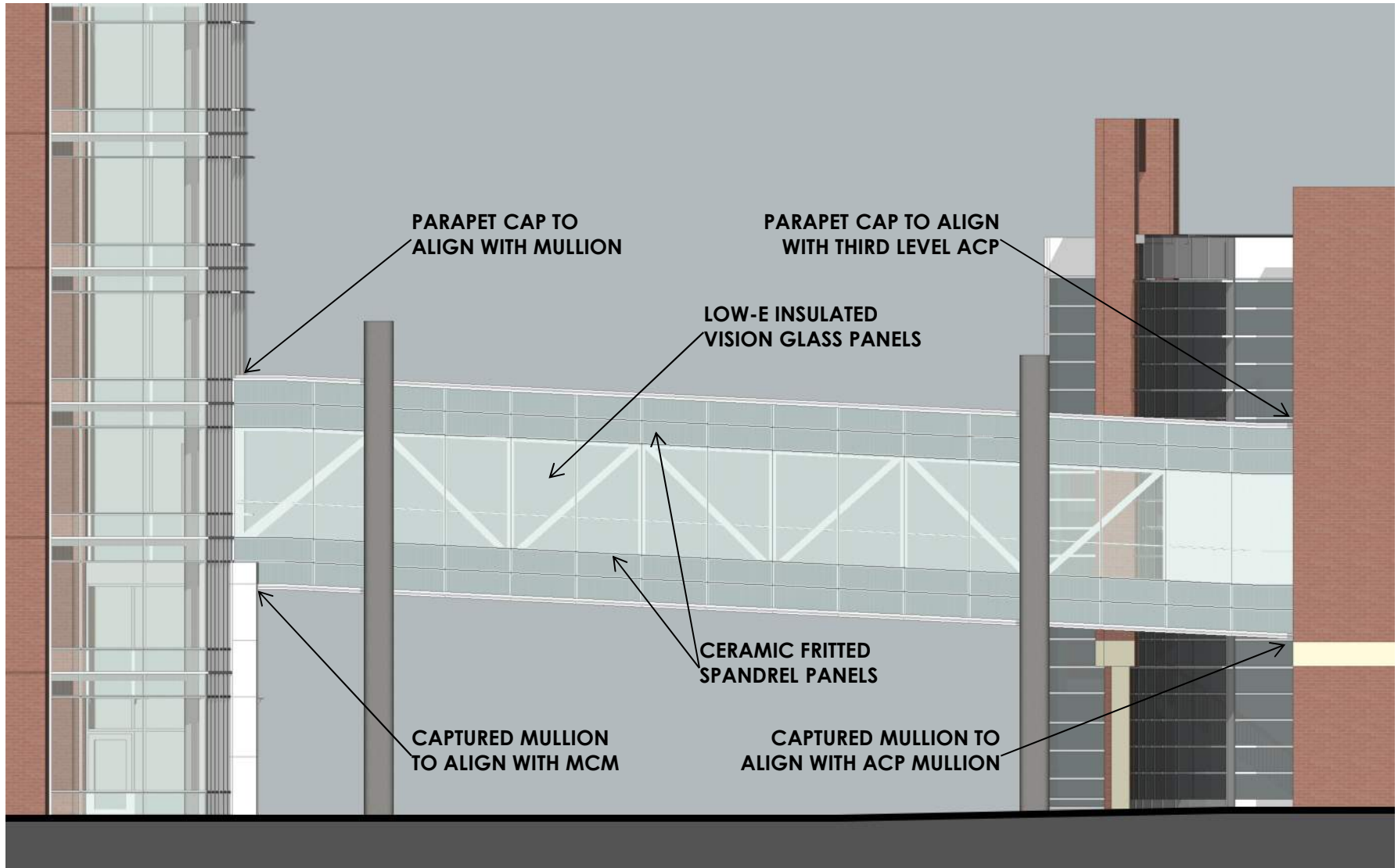
Bridge Elevation - East

Bridge Elevation



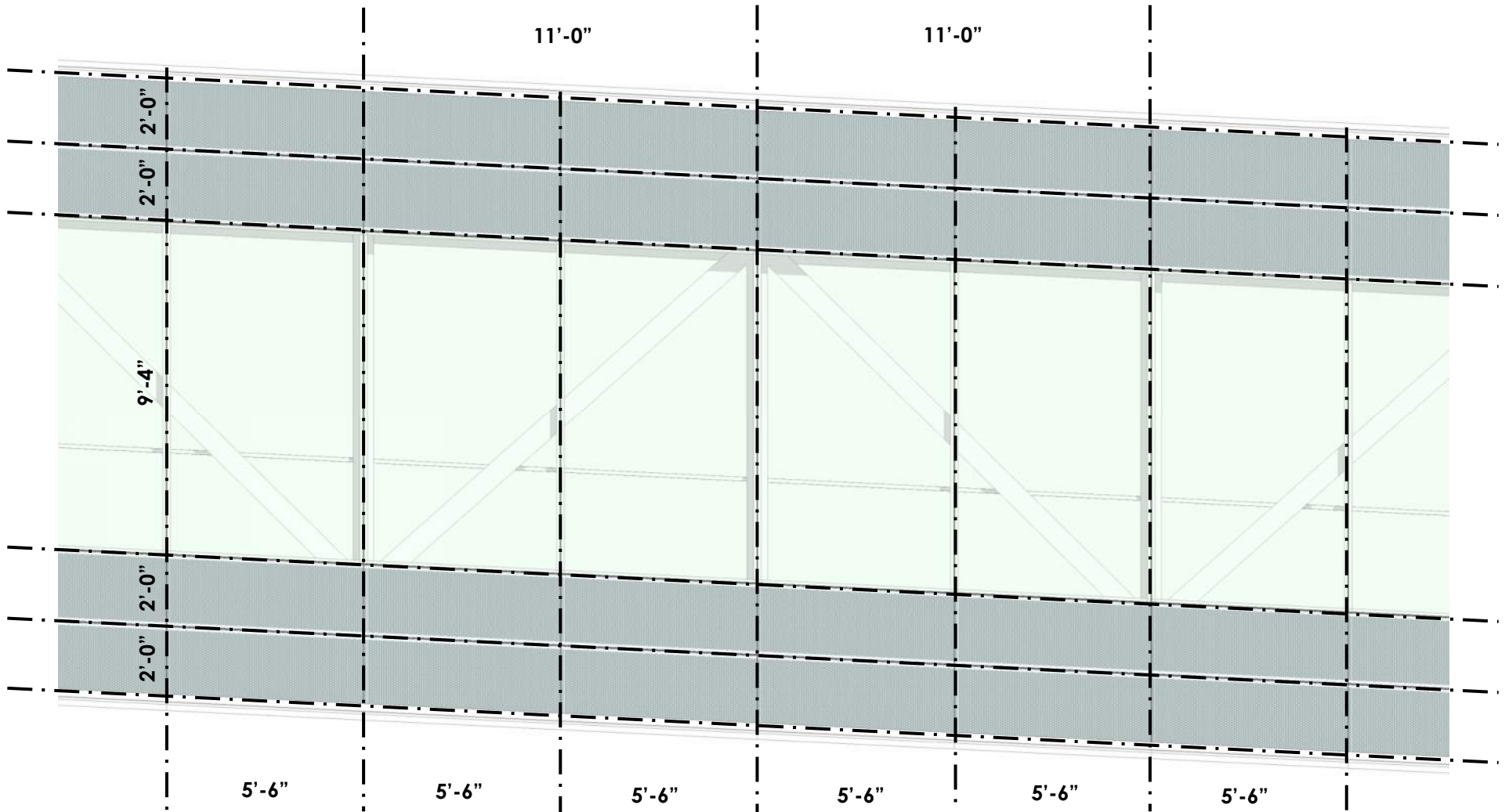
Bridge Elevation - West

Bridge Elevation



East Elevation of Pedestrian Bridge

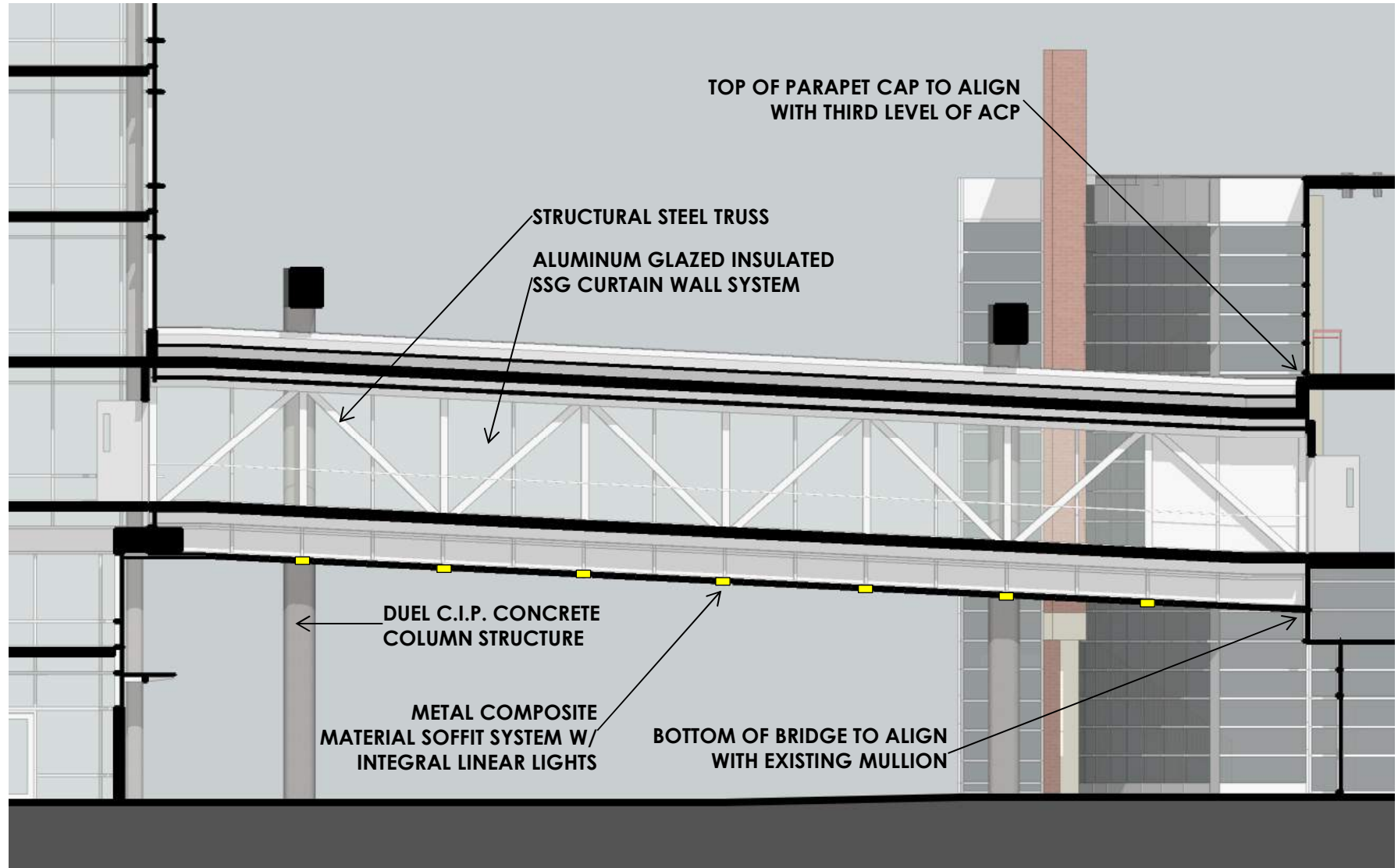
Bridge Elevation



Glazing/Truss Module

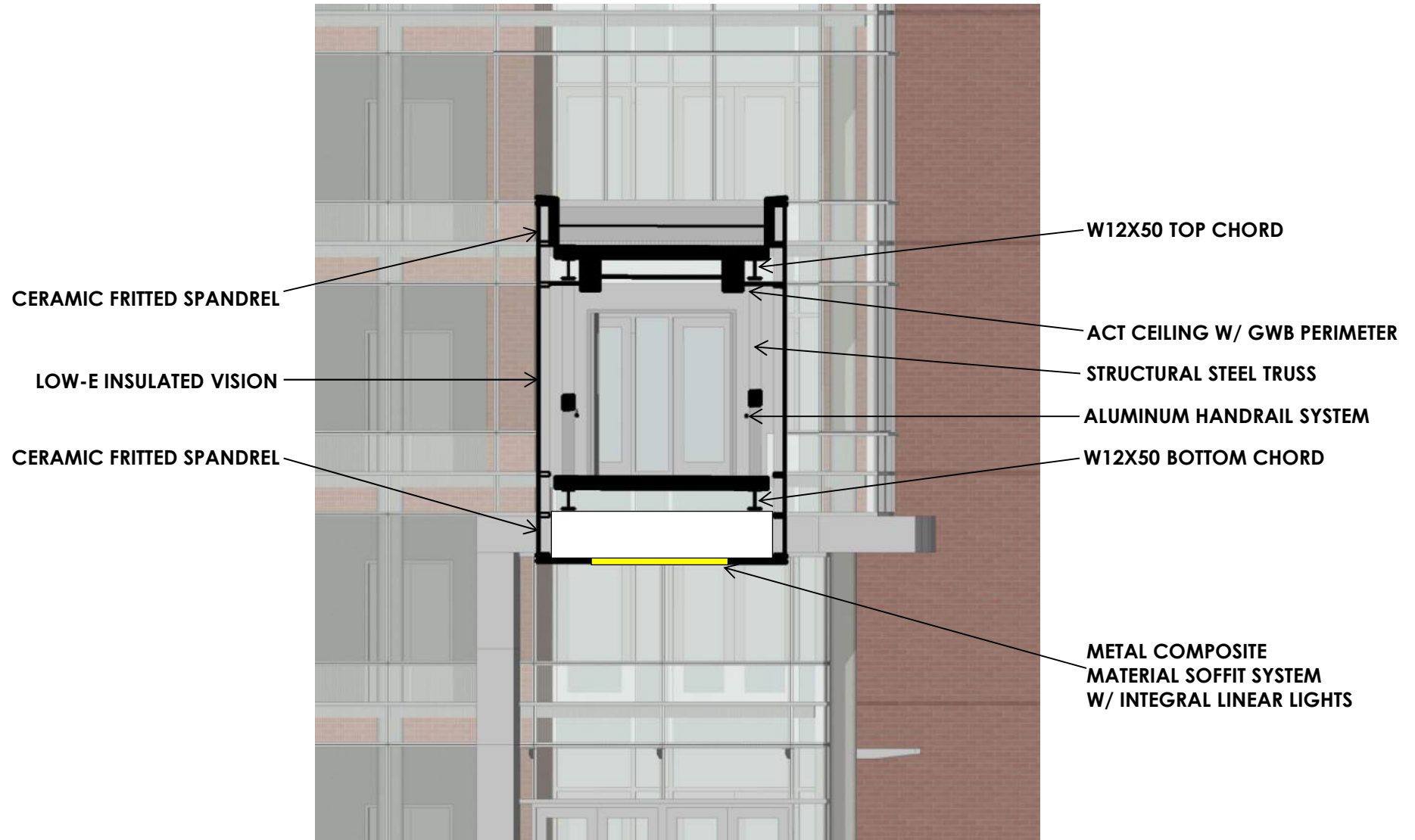
uchealth

Bridge Section



Section Through Pedestrian Bridge

Bridge Section



Section Through Pedestrian Bridge

Bridge Materials



INSULATED SSG CURTAIN WALL

- ALUMINUM INSULATED SSG CURTAIN WALL SYSTEM
- PAINTED FINISH TO MATCH EXISTING UCHA CAMPUS BUILDINGS
- LOW-E CLEAR GLAZING
- CERAMIC FRITTED SPANDREL PANELS



METAL COMPOSITE MATERIAL SYSTEM

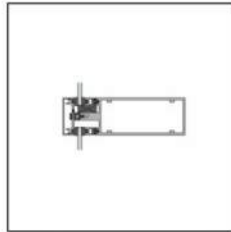
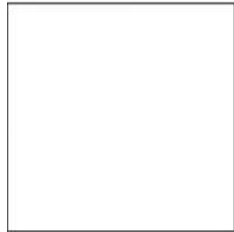
- METAL COMPOSITE MATERIAL SYSTEM
- PAINTED FINISH TO MATCH EXISTING UCHA CAMPUS BUILDINGS
- SOFFIT SYSTEM WITH INTEGRAL LINEAR LIGHTING



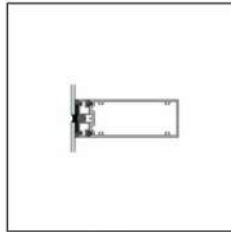
CAST-IN-PLACE CONCRETE

- CIP CONCRETE - DUEL COLUMN SUPPORT STRUCTURE
- SMOOTH FORMLINER - SACK-RUBBED FINISH
- MATCHES APPROVED FINISH ON GARAGE 2

Aluminum Insulated Glazing System Details



STANDARD CAP



SSG

HORIZONTAL MULLIONS

- STANDARD 1" MULLION CAP
- STRUCTURAL SILICONE GLAZED MULLION
- PAINTED FINISH TO MATCH EXISTING UCHA CAMPUS BUILDINGS



JAMB



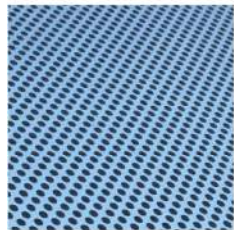
SSG



JAMB

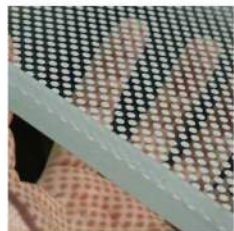
VERTICAL MULLIONS

- OVERLAPPING JAMB MULLION
- STRUCTURAL SILICONE GLAZED MULLION
- PAINTED FINISH TO MATCH EXISTING UCHA CAMPUS BUILDINGS

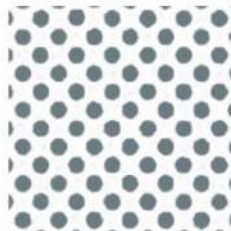


CERAMIC FRITTED GLAZING

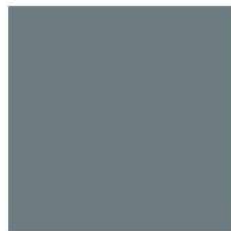
- CERAMIC FRITTED SPANDREL GLAZING
- HORIZONTAL BANDS AT FLOOR AND ROOF LINE
- FRITTED GLAZING TO MATCH GLAZING APPROVED ON GARAGE 2, TOWER 2, & TOWER 3



DOT PATTERN



1/8" - 40%



MEDIUM GRAY

CERAMIC FRIT PATTERN

- DOT PATTERN - 1/8" DOTS - 40% COVERAGE
- MEDIUM GRAY SILK-SCREEN
- PATTERN/COLOR TO MATCH PATTERN/COLOR APPROVED ON GARAGE 2, TOWER 2, & TOWER 3

Exterior Perspective



Aerial View Looking Southwest

Exterior Perspective



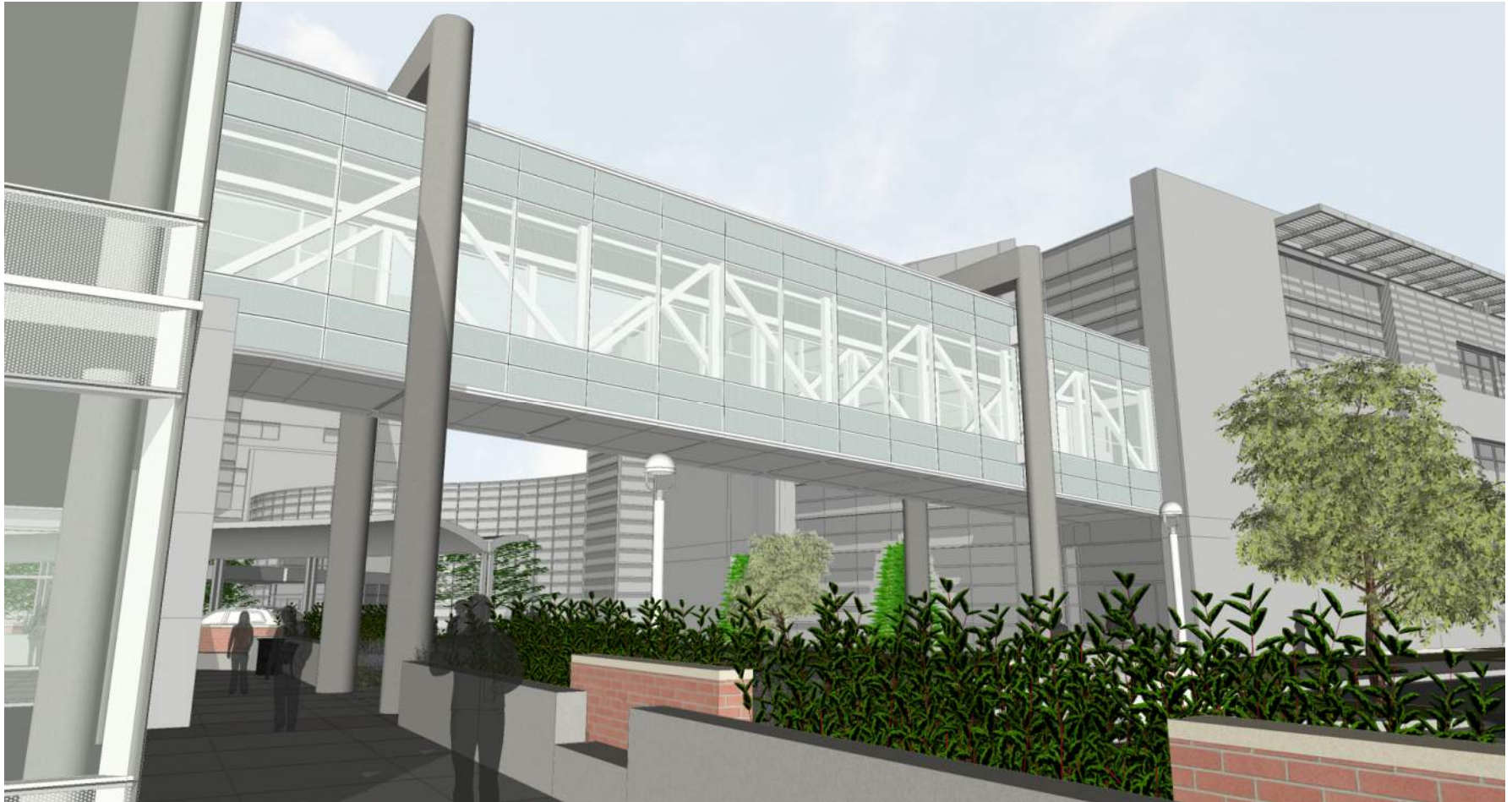
Aerial View From Entry Drive Looking West

Exterior Perspective



View From Entry Drive Looking West

Exterior Perspective



View of Pedestrian Bridge From North Plaza

Exterior Perspective



View of Pedestrian Bridge From West Plaza

Exterior Perspective



View of Pedestrian Bridge From Valet Drop-Off

Exterior Perspective



View of Pedestrian Bridge From SAREC Parking Lot

Exterior Perspective



View From ACP Looking Toward Garage 2

Exterior Perspective



View From Garage 2 Looking Toward ACP

Thank you

uchealth

Appendix