

UCHealth – University of Colorado Hospital Parking Garage 2 Pedestrian Bridge

University of Colorado Design Review Board
Schematic Design
June 22, 2021

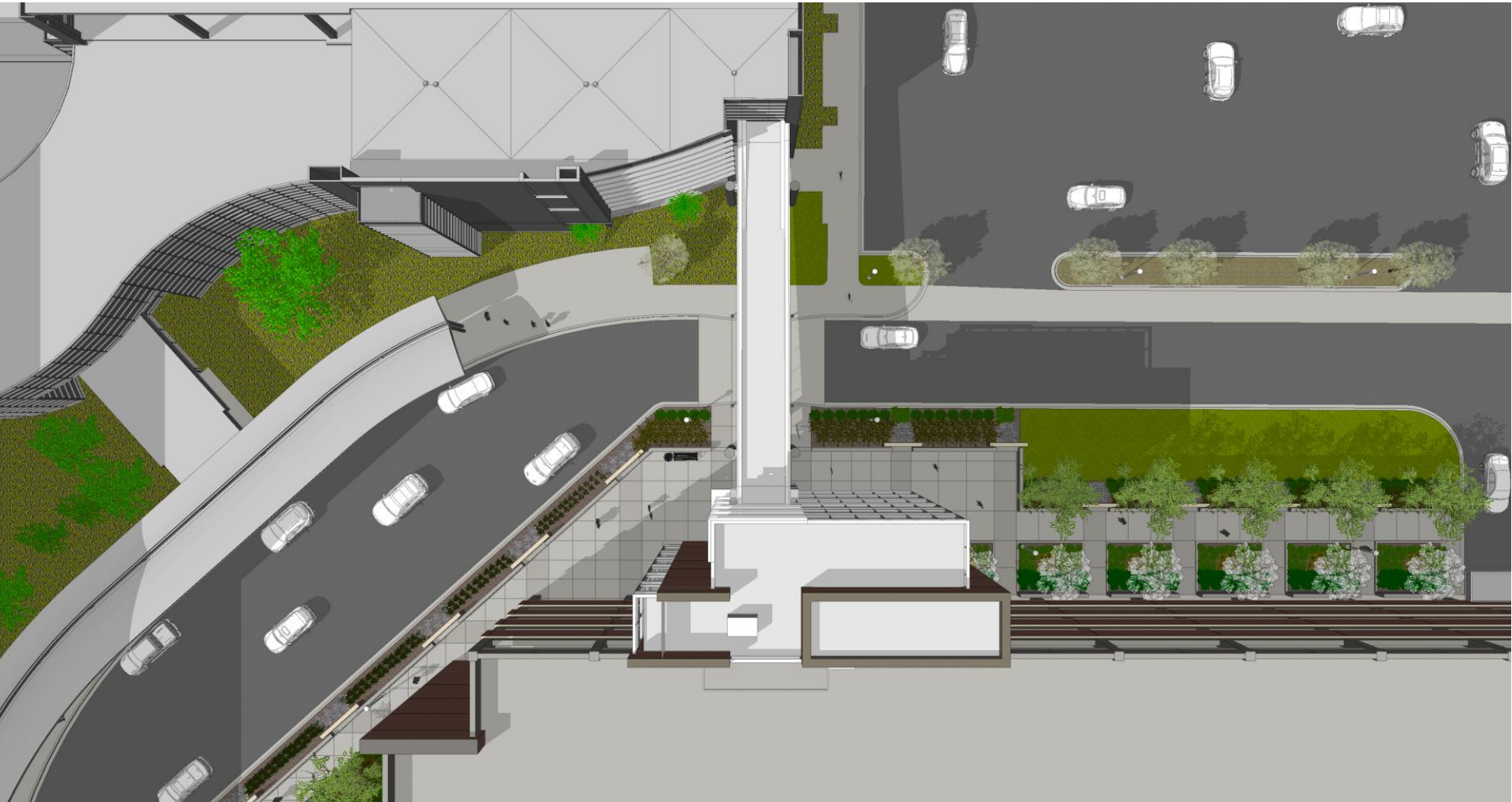
I. Additional Schematic Studies

Aerial View

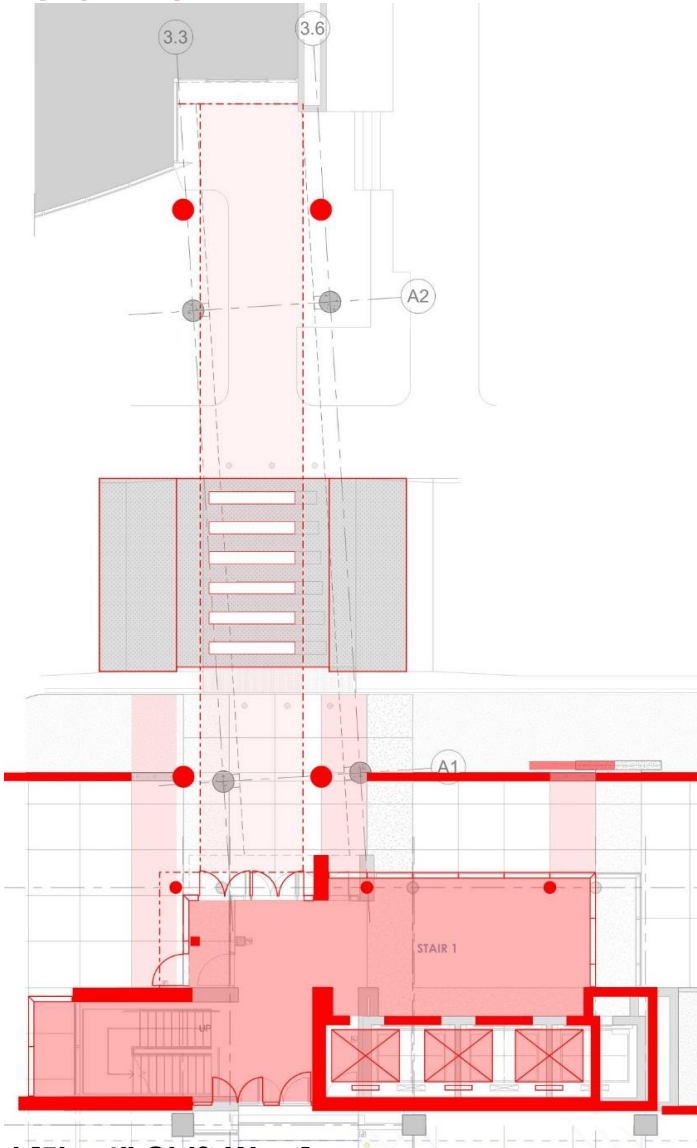


Aerial View of Garage 2 With Bridge

Aerial View

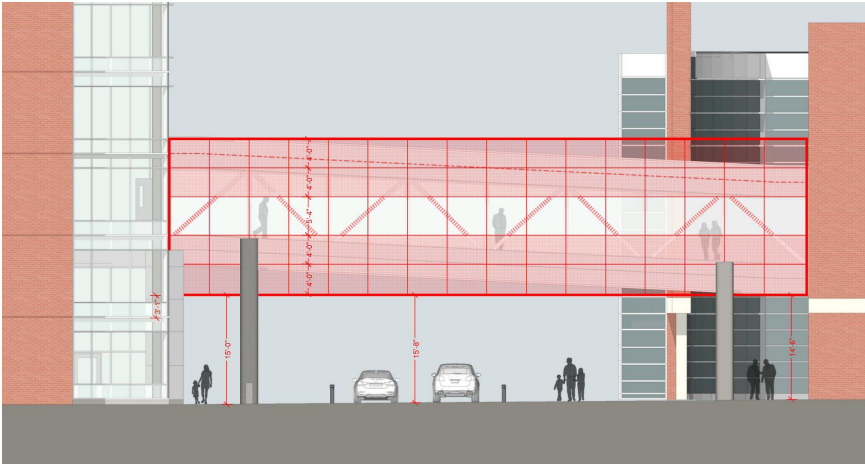
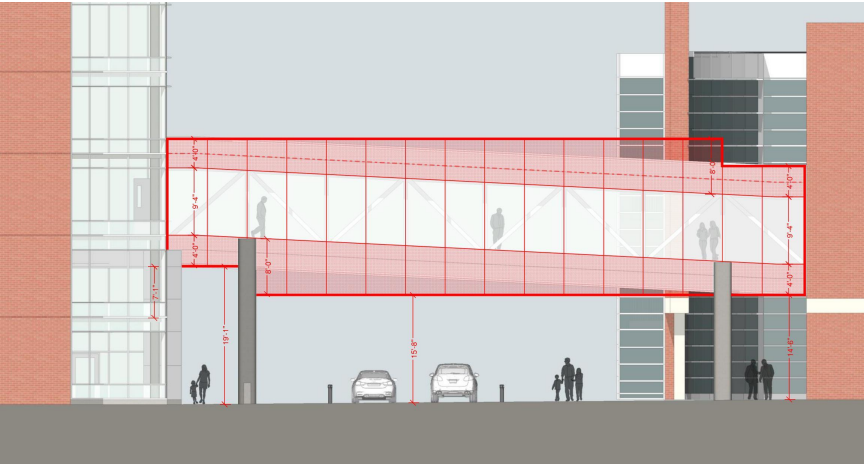


Floor Plan at Ground



Garage 2 Level P0 to ACP First Level [5' – 4" Shift West]

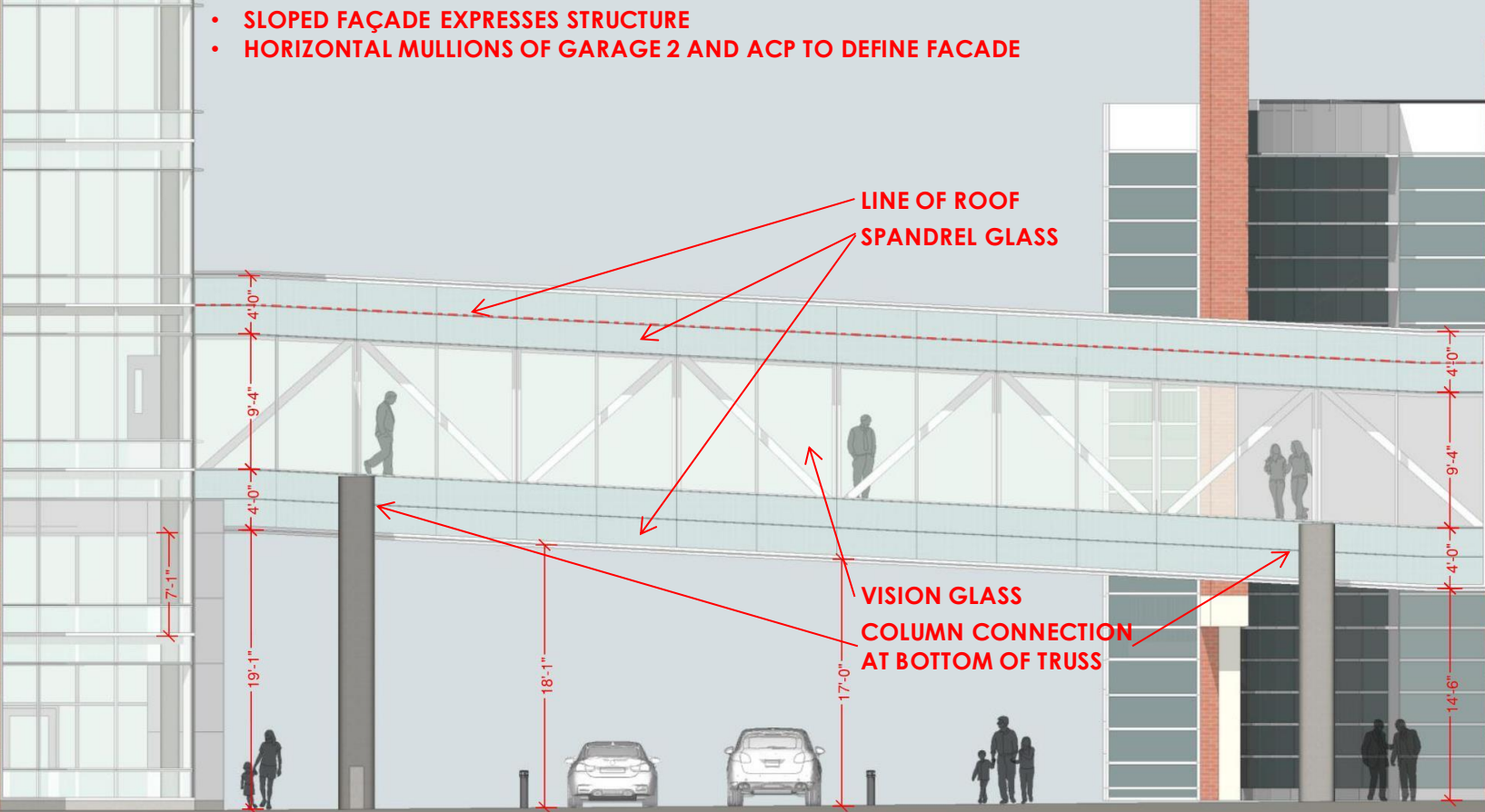
Bridge Elevation Studies



East Elevation Comparison



Bridge Elevation Studies

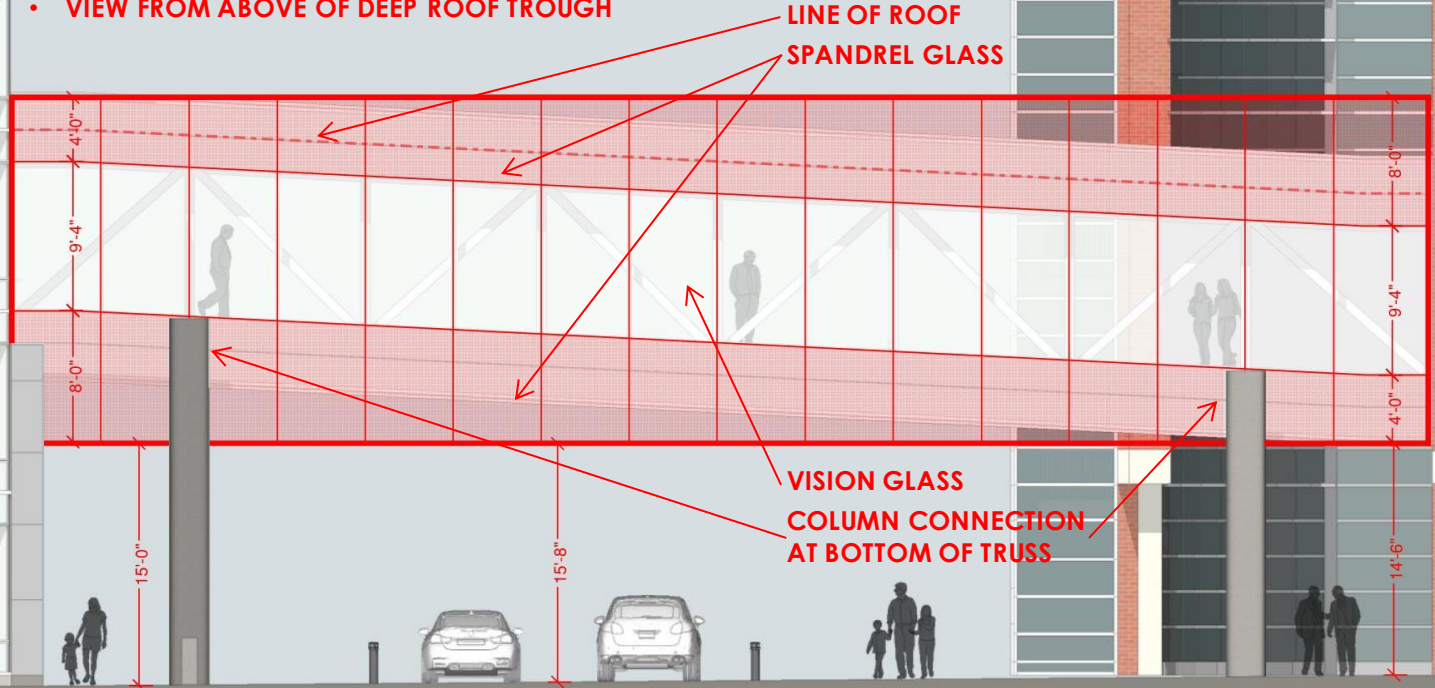


Bridge Elevation – East [Sloped Façade – Sloped Vision Glass]



Bridge Elevation Studies

- APPROX. 775 SF OF ADDITIONAL GLAZING
- ADDITIONAL STEEL REQUIRED FOR PARAPET & SOFFIT
- COLUMN/BEAM/TRUSS MEMBERS INCREASE IN SIZE (DEAD LOAD, DRIFT, WIND LOAD)
- SLOPED TRUSS/VISION GLASS OPPOSES LEVEL ELEVATION OF FAÇADE
- OBSTRUCTS VIEW FROM SECOND LEVEL OF GARAGE
- VIEW FROM ABOVE OF DEEP ROOF TROUGH

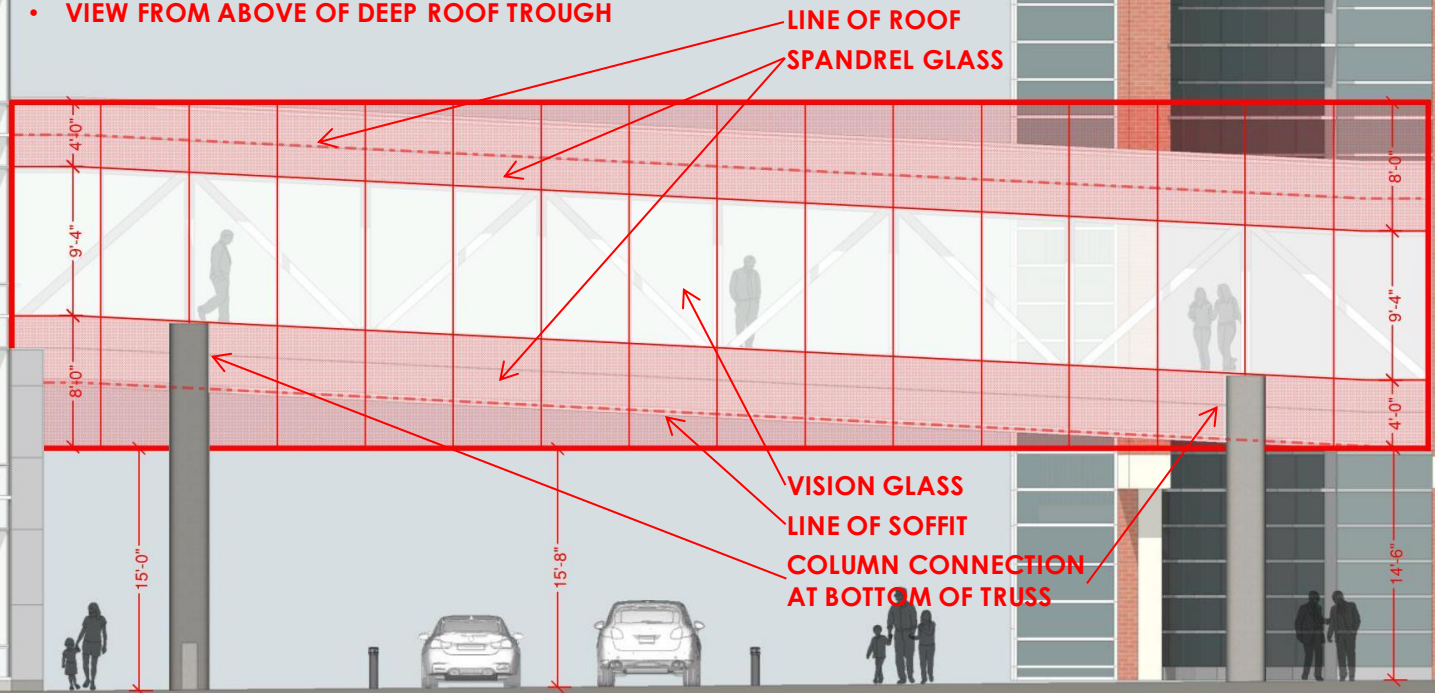


Bridge Elevation – East [Level Façade – Sloped Vision Glass]



Bridge Elevation Studies

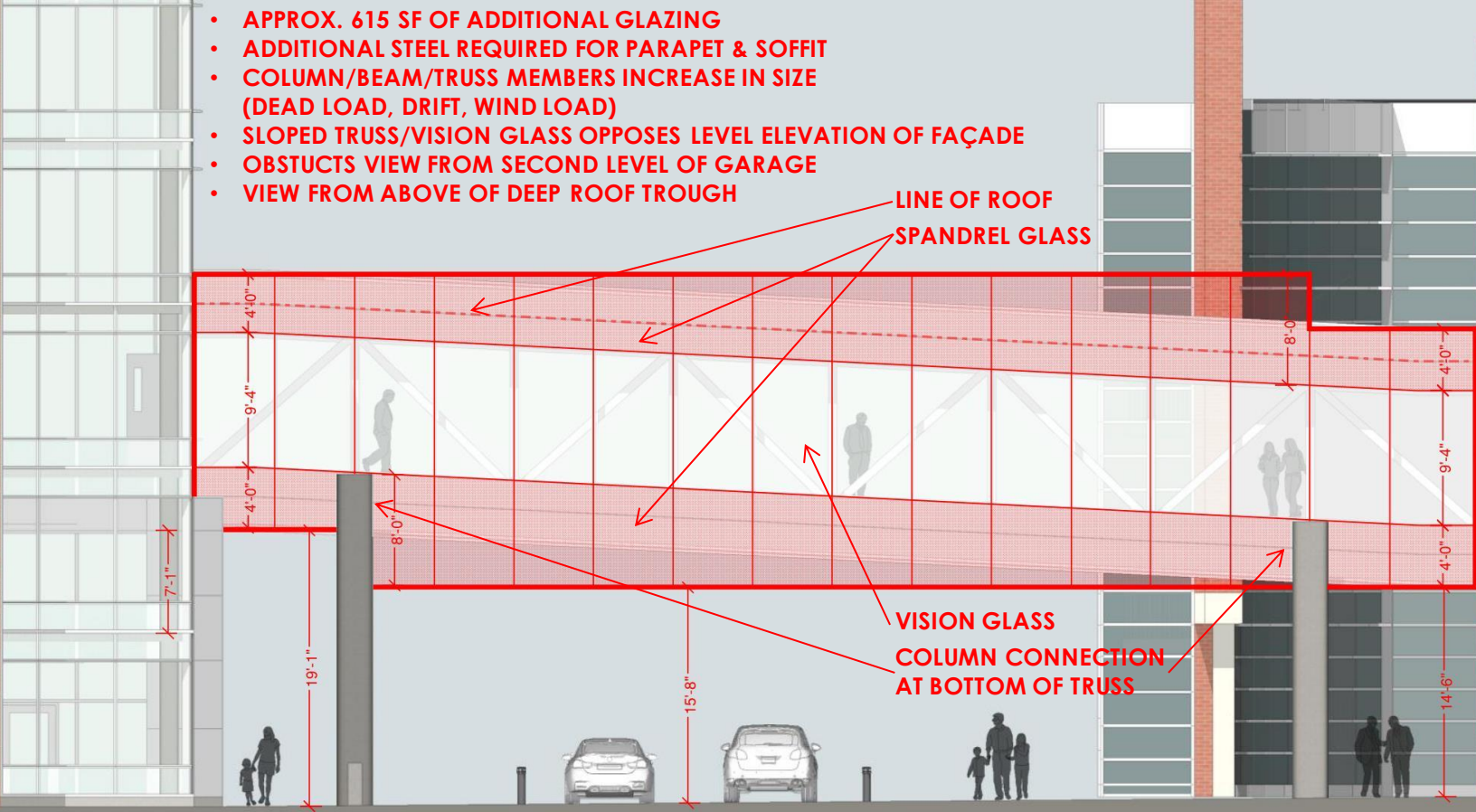
- APPROX. 775 SF OF ADDITIONAL GLAZING
- ADDITIONAL STEEL REQUIRED FOR PARAPET & SOFFIT
- COLUMN/BEAM/TRUSS MEMBERS INCREASE IN SIZE (DEAD LOAD, DRIFT, WIND LOAD)
- SLOPED TRUSS/VISION GLASS OPPOSES LEVEL ELEVATION OF FAÇADE
- SLOPED SOFFIT AGAINST LEVEL ELEVATION OF FAÇADE
- VIEW FROM ABOVE OF DEEP ROOF TROUGH



Bridge Elevation – East [Level Façade – Sloped Vision Glass – Sloped Soffit]



Bridge Elevation Studies



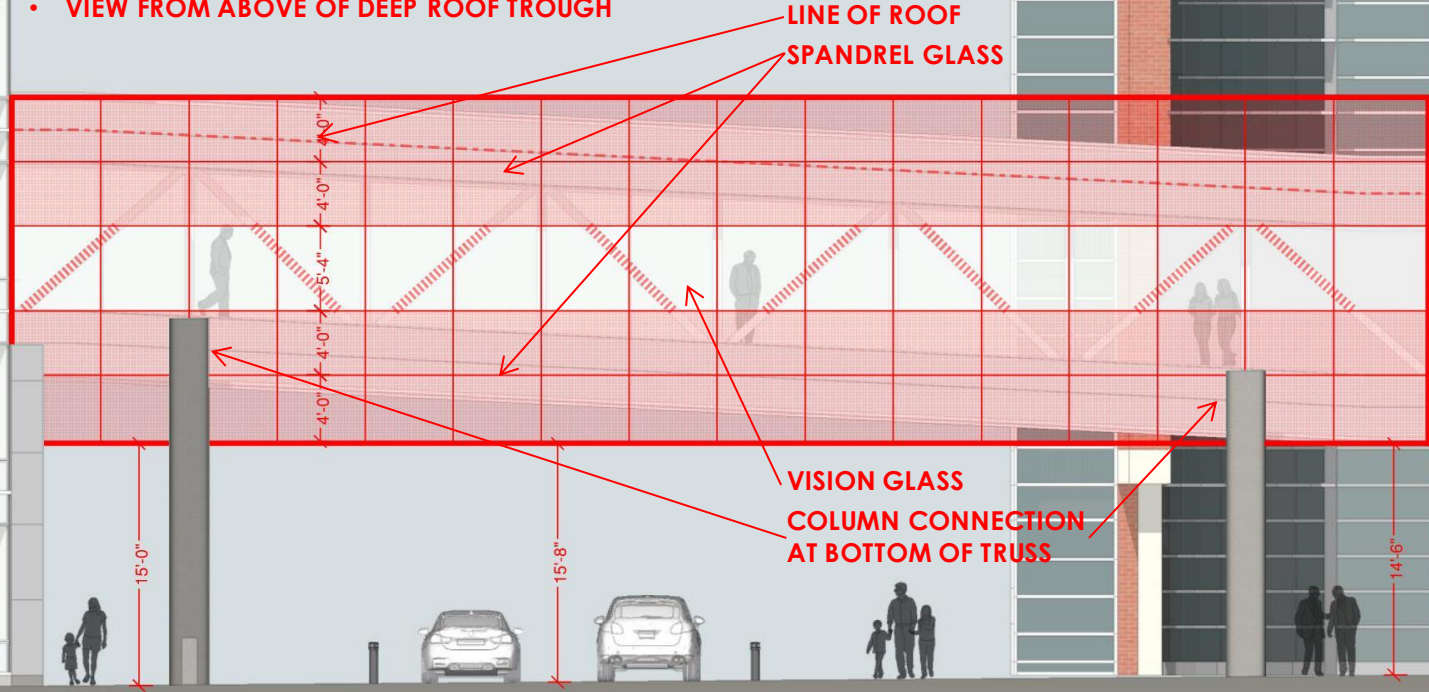
- APPROX. 615 SF OF ADDITIONAL GLAZING
- ADDITIONAL STEEL REQUIRED FOR PARAPET & SOFFIT
- COLUMN/BEAM/TRUSS MEMBERS INCREASE IN SIZE (DEAD LOAD, DRIFT, WIND LOAD)
- SLOPED TRUSS/VISION GLASS OPPOSES LEVEL ELEVATION OF FAÇADE
- OBSTRUCTS VIEW FROM SECOND LEVEL OF GARAGE
- VIEW FROM ABOVE OF DEEP ROOF TROUGH

Bridge Elevation – East [Stepped Façade – Slopped Vision Glass]



Bridge Elevation Studies

- APPROX. 775 SF OF ADDITIONAL GLAZING
- ADDITIONAL STEEL REQUIRED FOR PARAPET & SOFFIT
- COLUMN/BEAM/TRUSS MEMBERS INCREASE IN SIZE (DEAD LOAD, DRIFT, WIND LOAD)
- ONLY 5'-4" VISION GLASS – DOES NOT FOLLOW FLOOR OR CEILING LINE
- OBSTRUCTS VIEW FROM SECOND LEVEL OF GARAGE
- VIEW FROM ABOVE OF DEEP ROOF TROUGH



Bridge Elevation – East [5'- 4" Horizontal Vision Glass]

Interior Perspective



**Floor to Ceiling
Vision Glass**



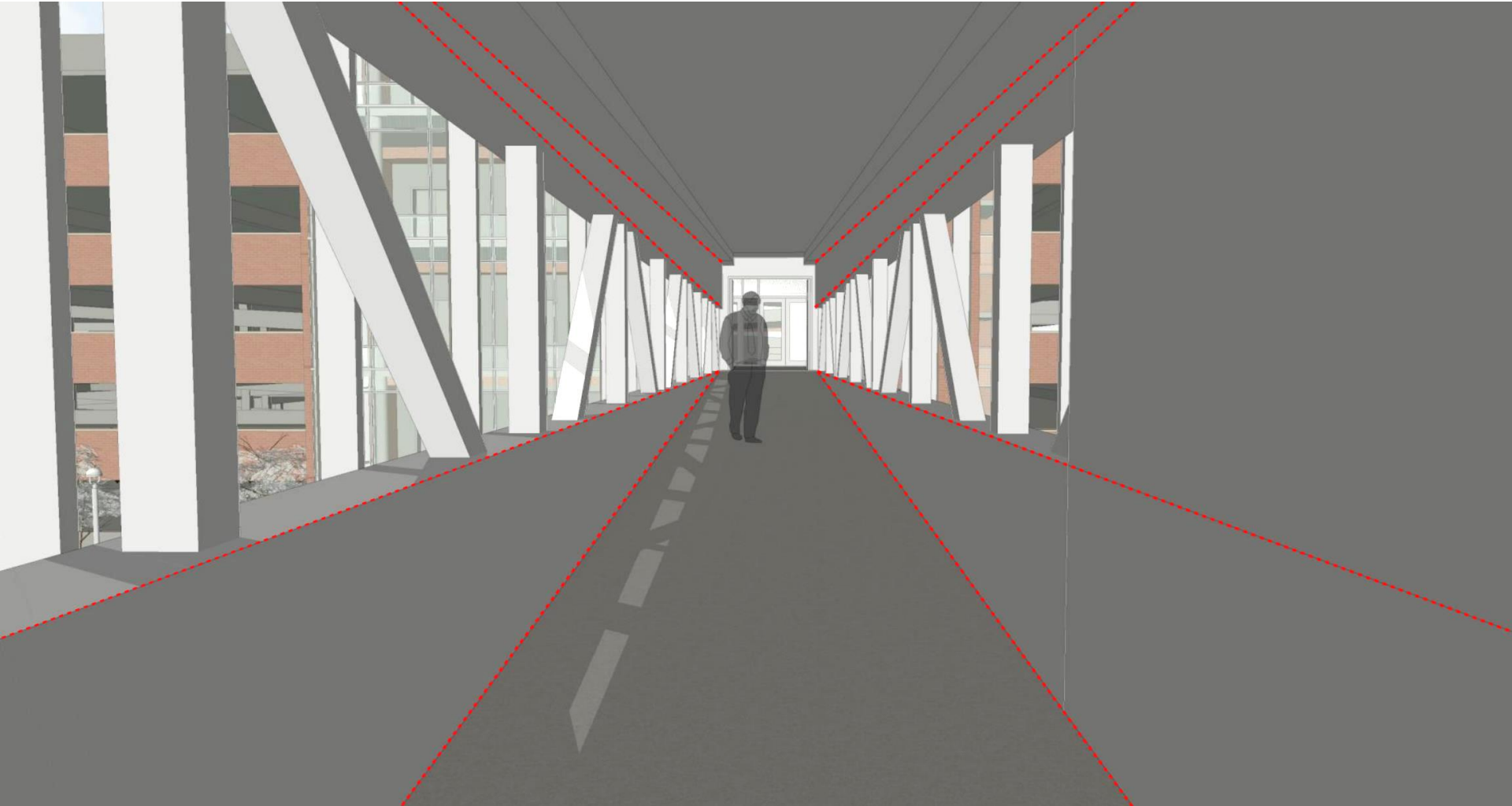
**5'- 4" Horizontal
Vision Glass**

Interior Perspective



Floor to Ceiling Vision Glass

Interior Perspective



5'- 4" Horizontal Vision Glass

uhealth

Bridge Soffit Studies



- SLOPED SOFFIT – MAXIMIZES CLEARANCE AT ALL LOCATIONS

Sloped Soffit

Bridge Soffit Studies



- LEVEL SOFFIT – LOWERS CLEARANCE AT ENTRY DRIVE
- OBSTUCTS VIEW FROM SECOND LEVEL OF GARAGE 2

Level Soffit

Bridge Soffit Studies



Sloped Soffit With Level Curtain Wall

Graphics Studies



Example of UCHealth Graphic Applied to Inside of Glass



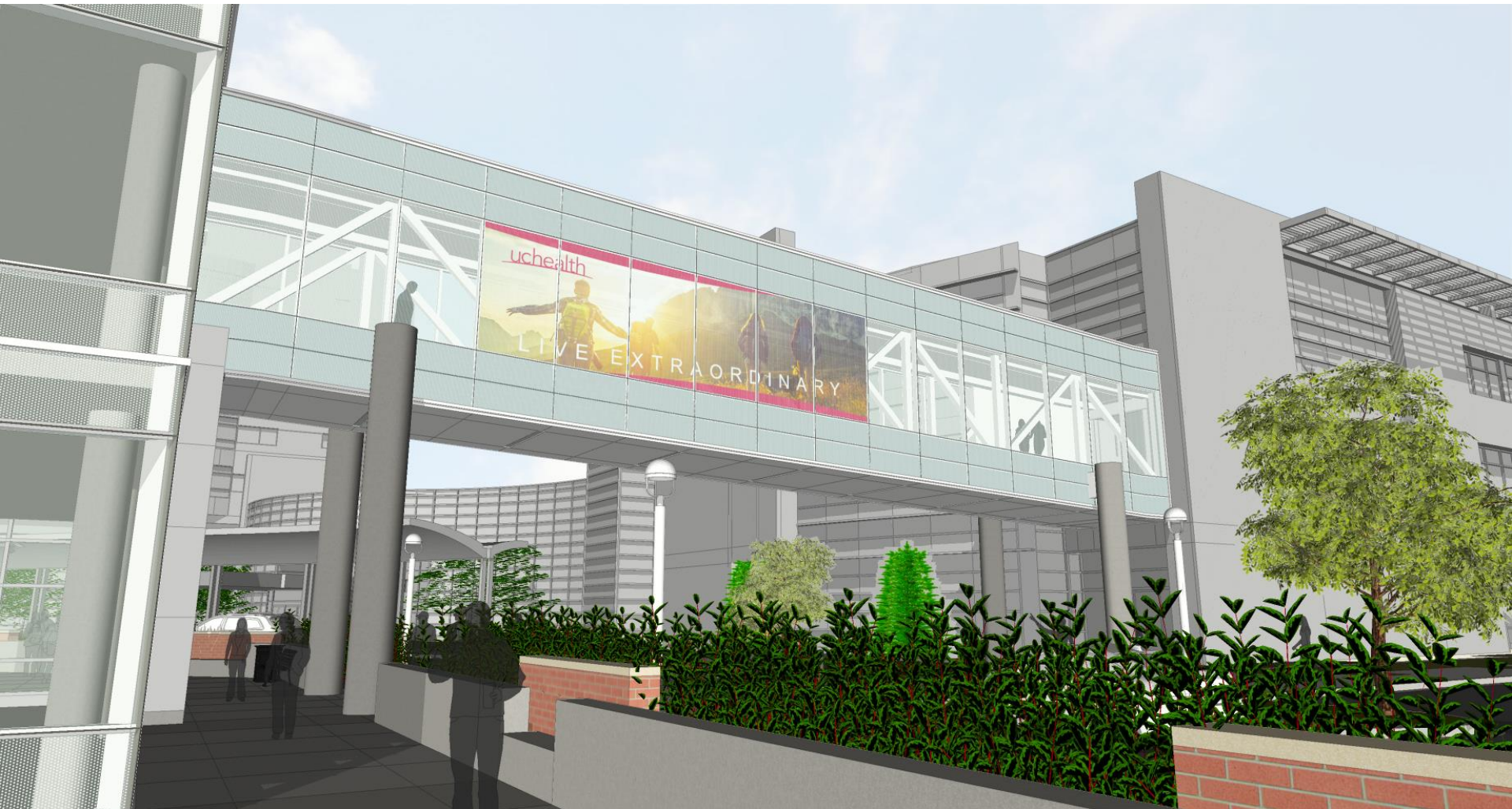
Graphics Studies



Example of UCHealth Graphic Applied to Inside of Glass



Graphics Studies



Example of UCHealth Graphic Applied to Inside of Glass



II. Perspective Comparisons [Alternate 1]

Exterior Perspective Comparison



Sloped Bridge Facade – Level Bridge Façade Comparison

Exterior Perspective – Preferred Solution



Aerial View Looking Southwest



Exterior Perspective – Alternate Study 1



Aerial View Looking Southwest



Exterior Perspective Comparison



Sloped Bridge Facade – Level Bridge Façade Comparison



Exterior Perspective – Preferred Solution



Aerial View Looking West

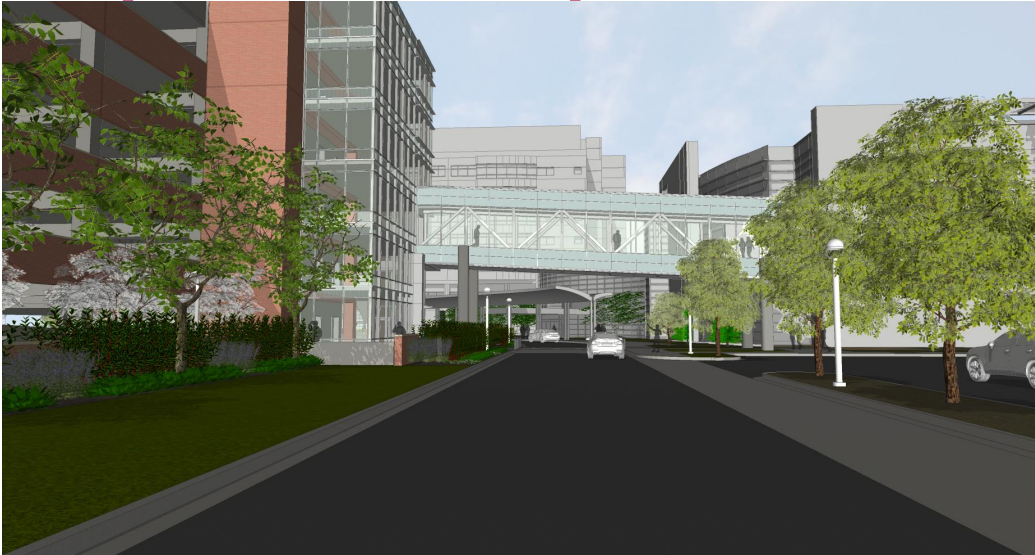
Exterior Perspective – Alternate Study 1



Aerial View Looking West



Exterior Perspective Comparison



Sloped Bridge Facade – Level Bridge Façade Comparison



Exterior Perspective – Preferred Solution



View Looking West

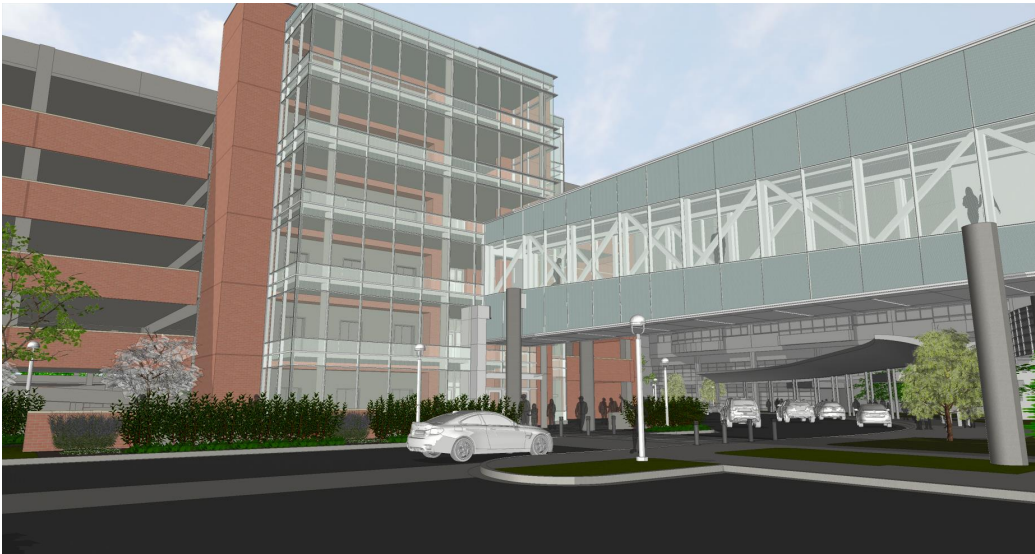
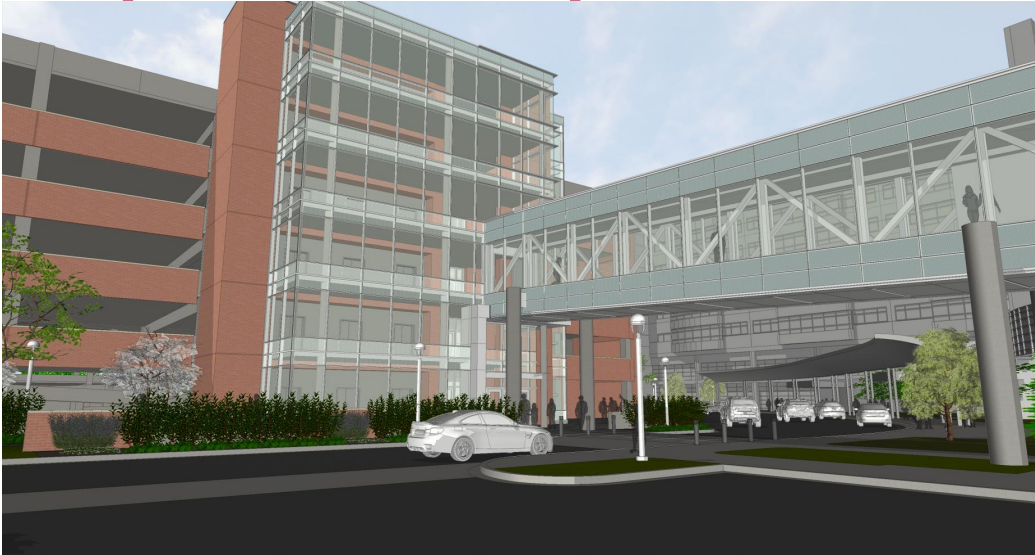
Exterior Perspective – Alternate Study 1



View Looking West

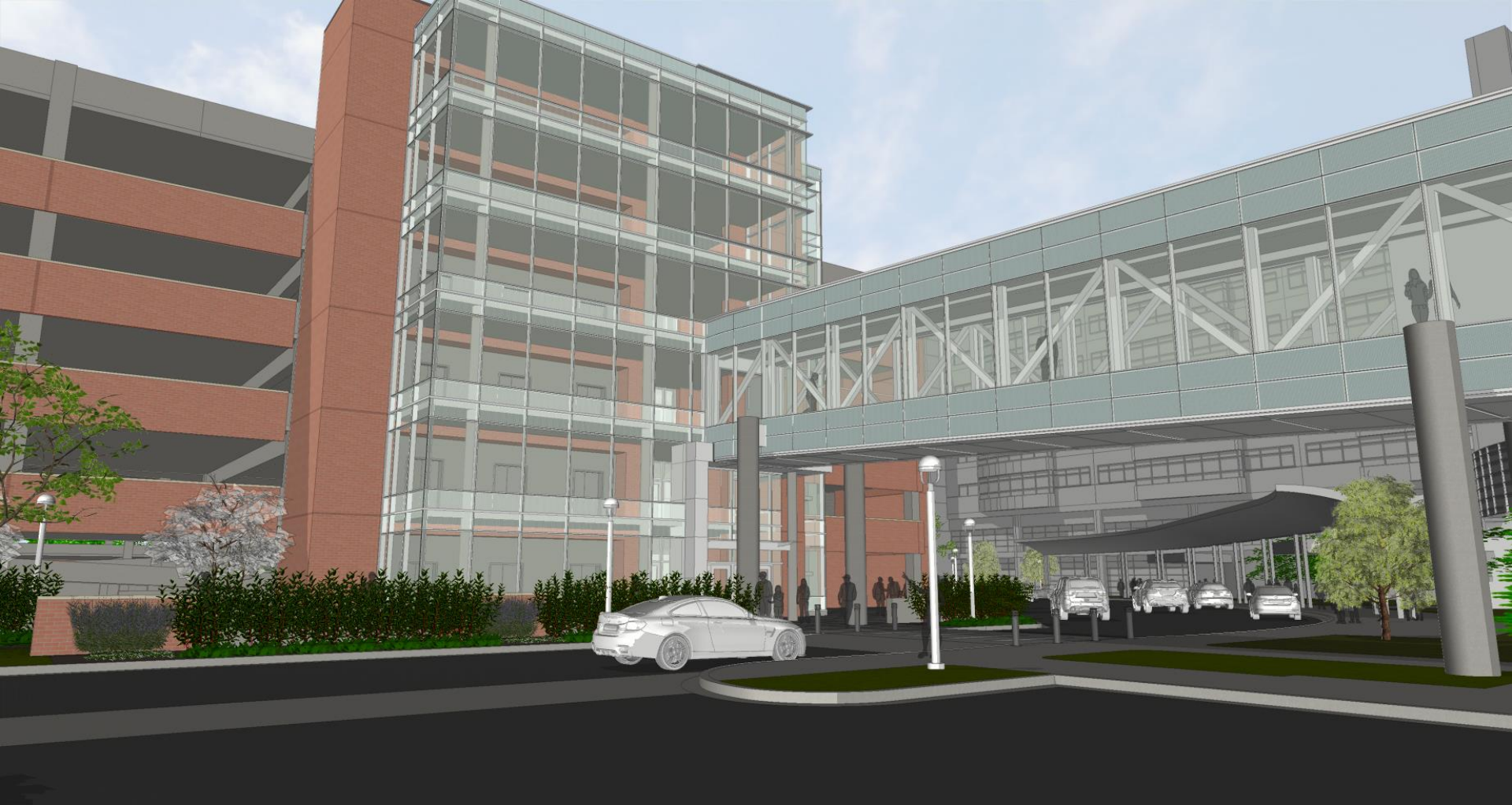


Exterior Perspective Comparison



Sloped Bridge Facade – Level Bridge Façade Comparison

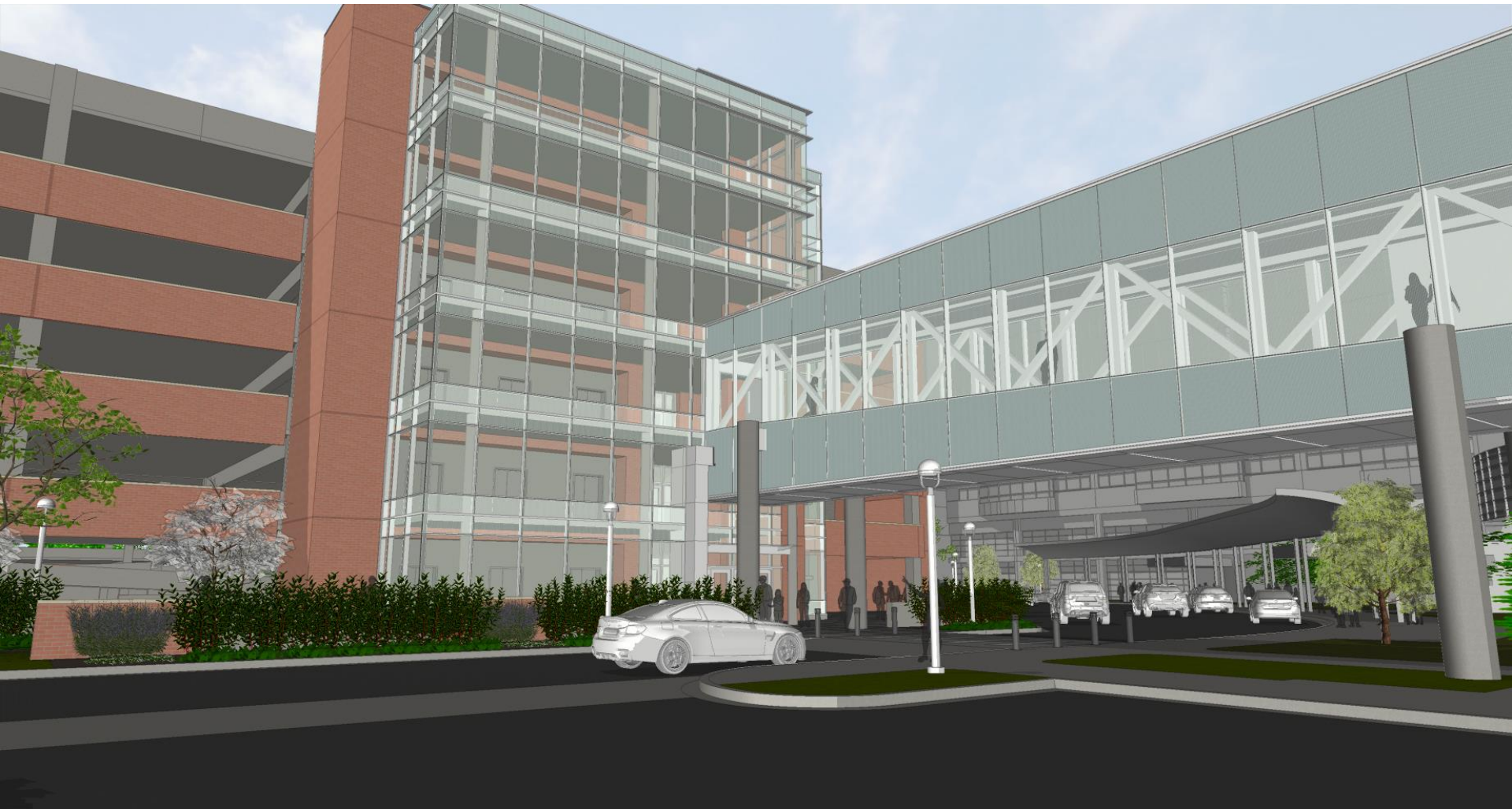
Exterior Perspective – Preferred Solution



View Looking Southwest

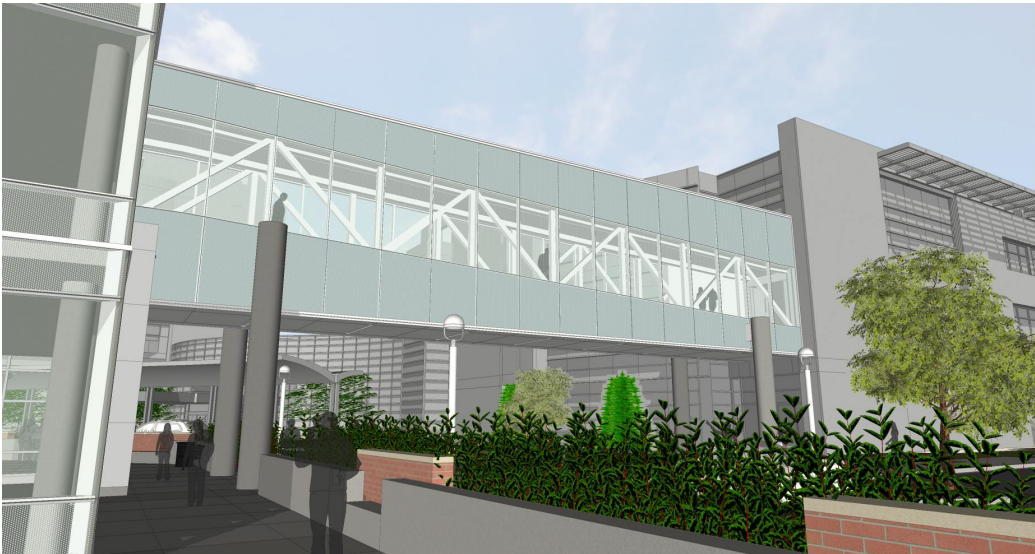
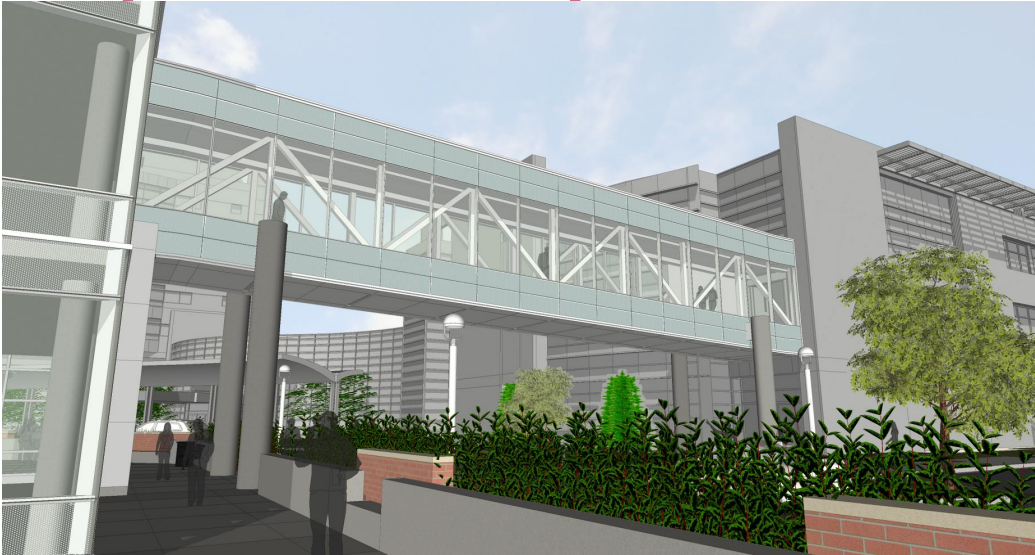


Exterior Perspective – Alternate Study 1



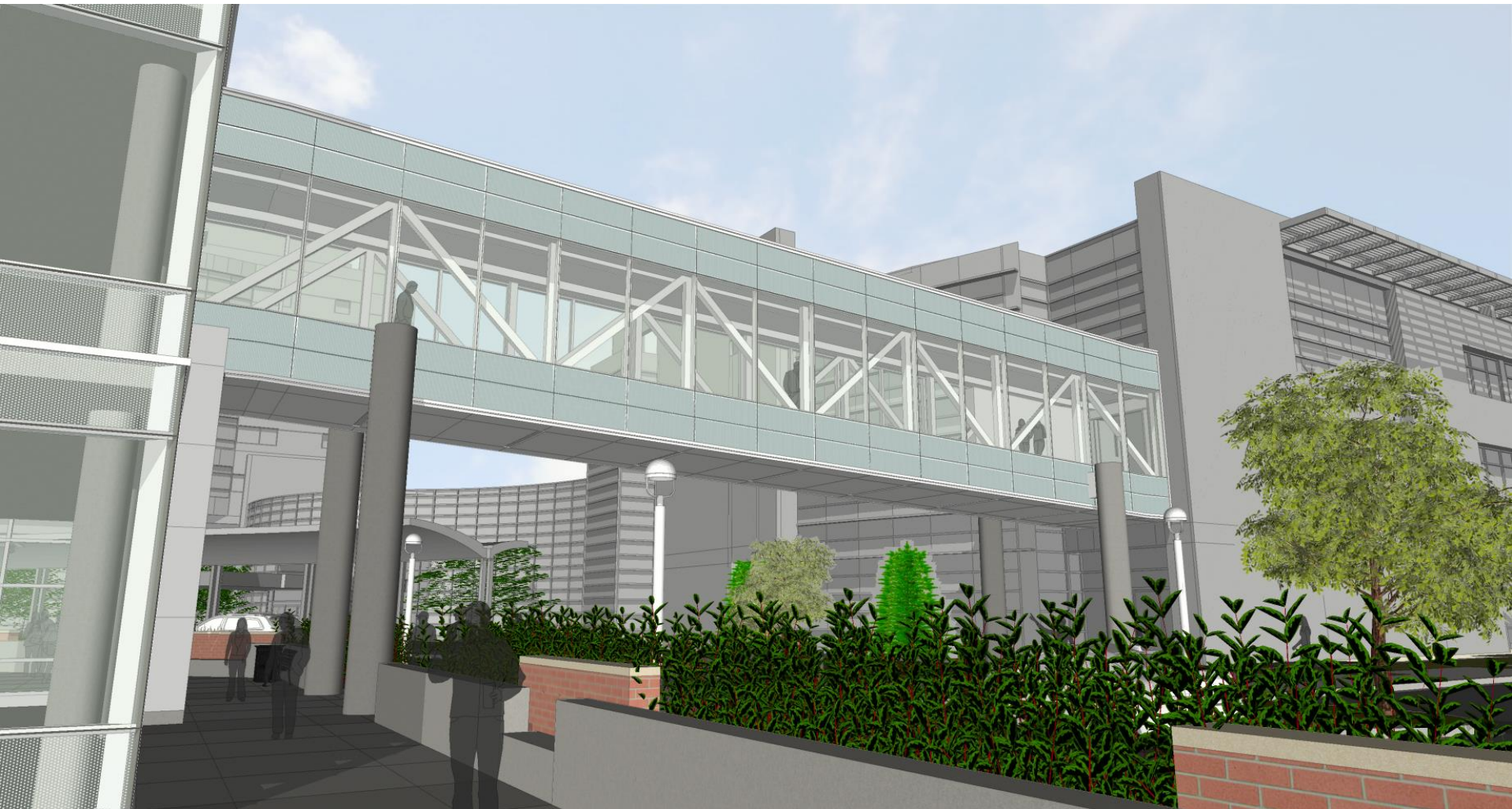
View Looking Southwest

Exterior Perspective Comparison



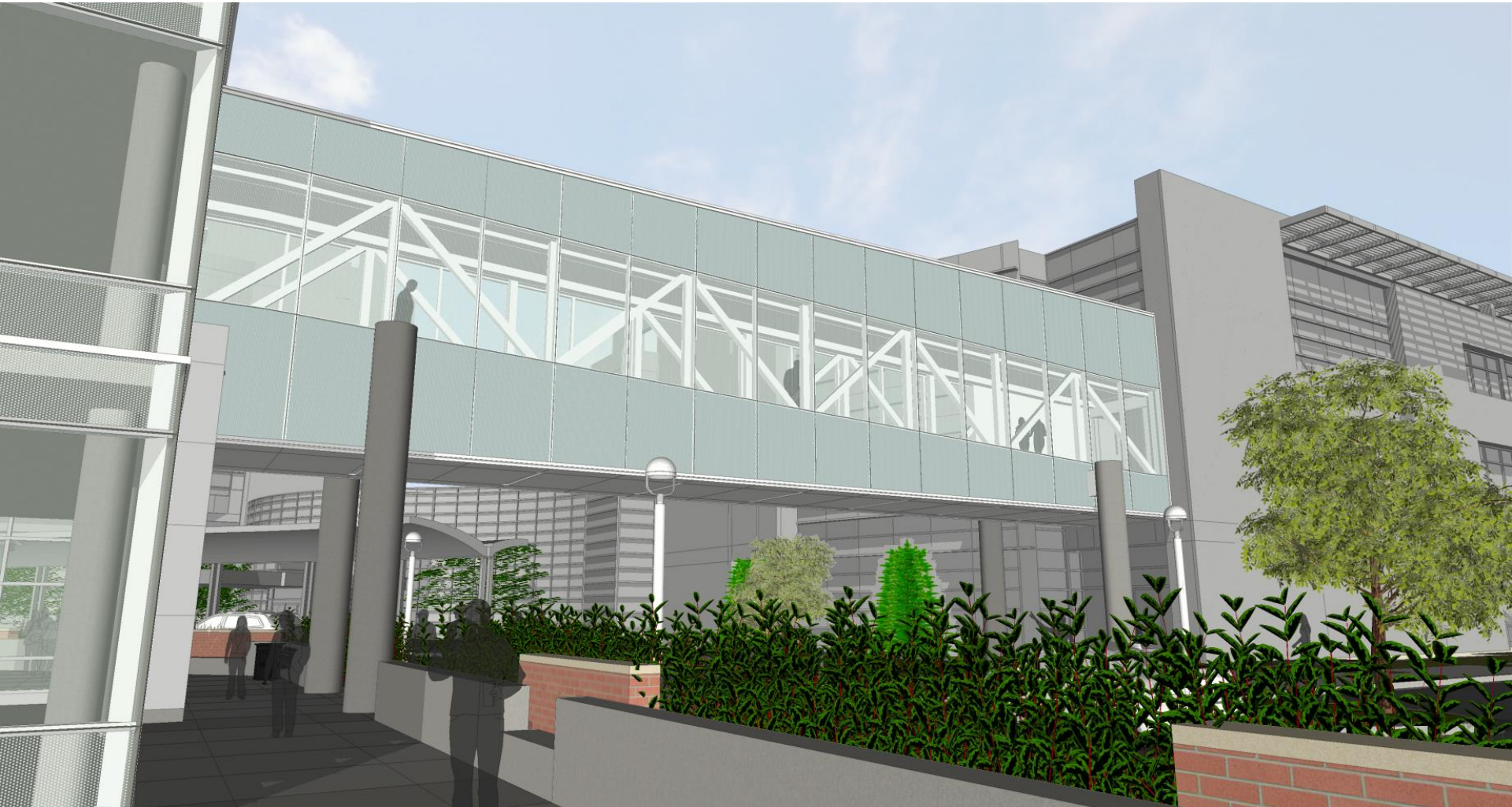
Sloped Bridge Facade – Level Bridge Façade Comparison

Exterior Perspective – Preferred Solution



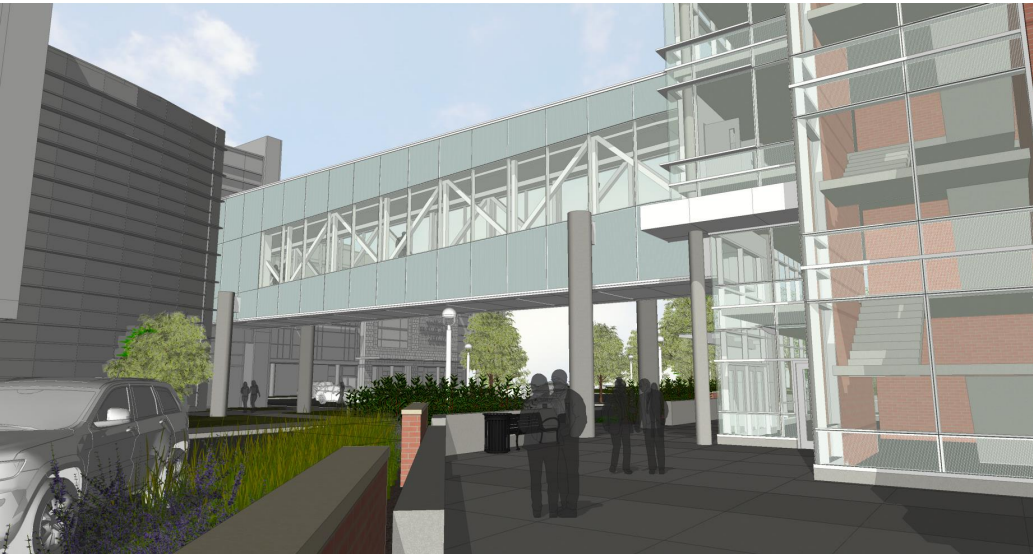
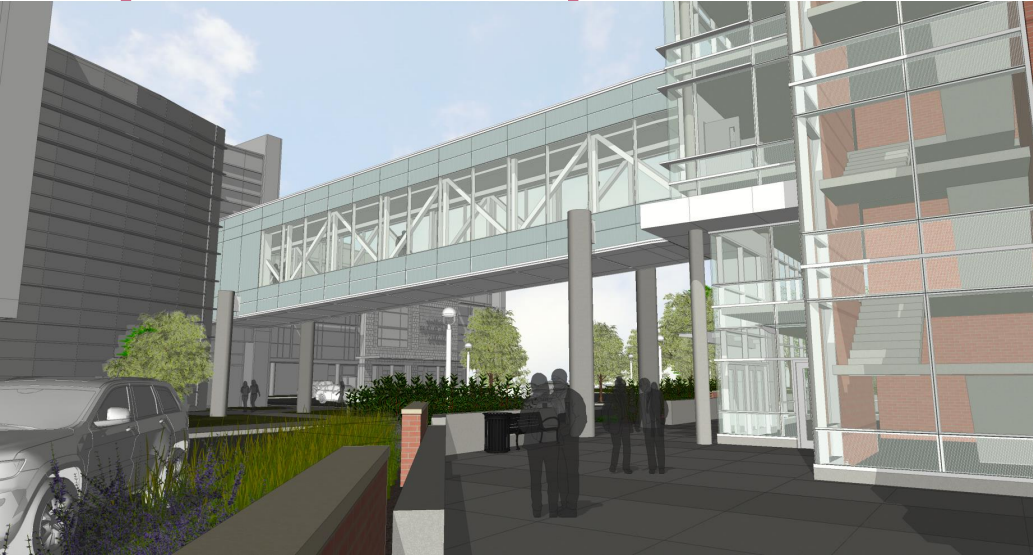
View Looking Northwest

Exterior Perspective – Alternate Study 1



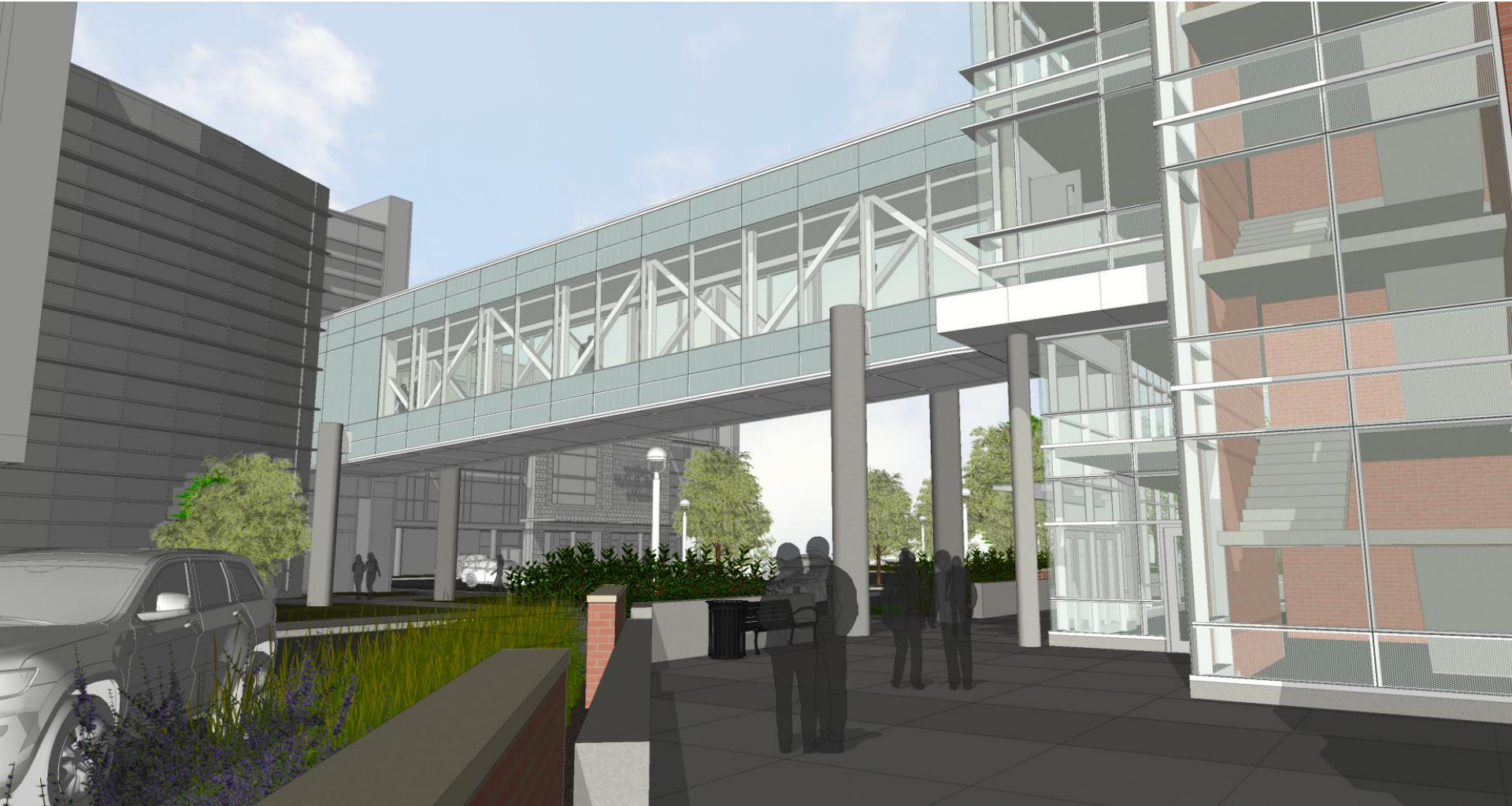
View Looking Northwest

Exterior Perspective Comparison



Sloped Bridge Facade – Level Bridge Façade Comparison

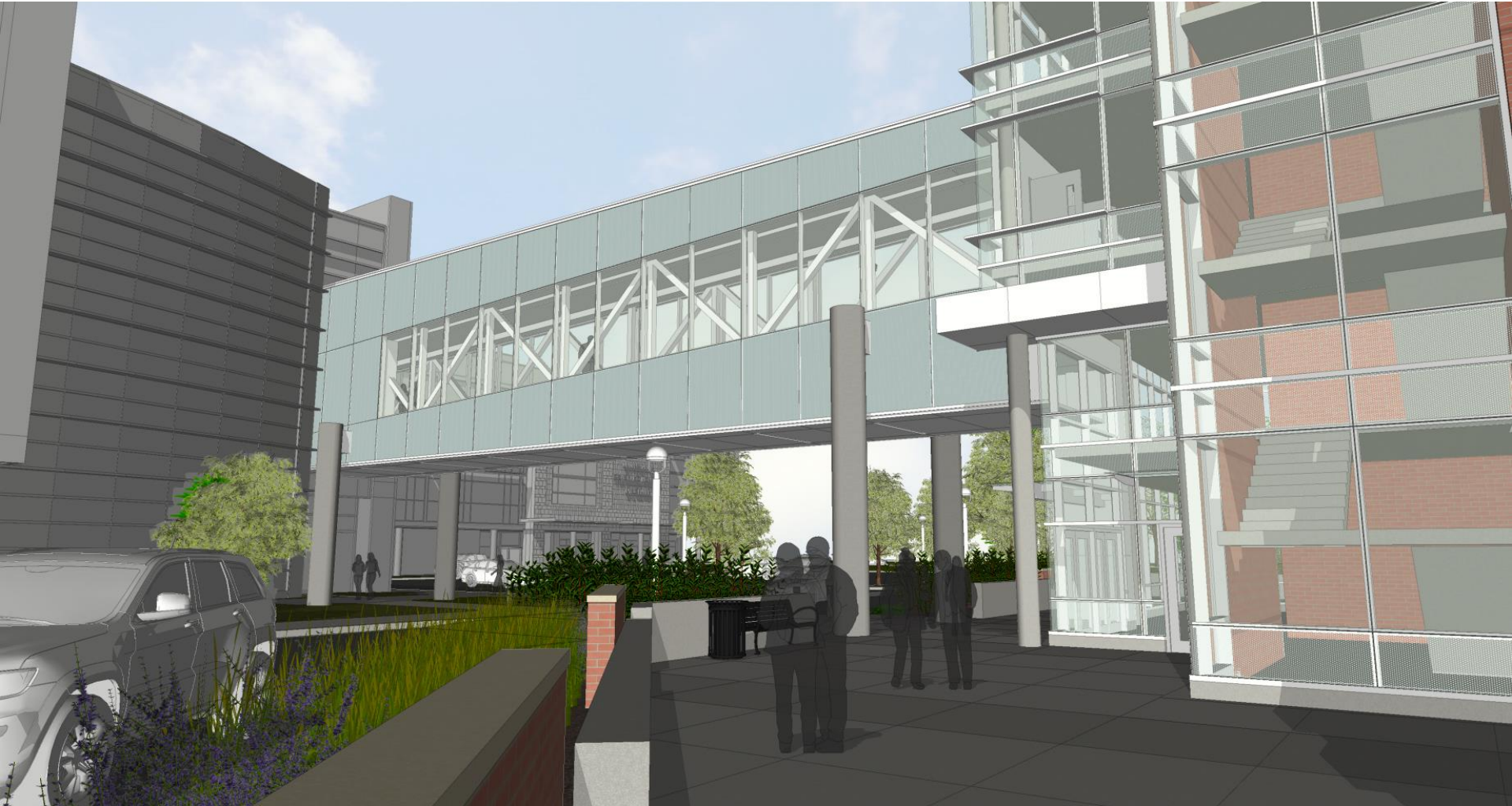
Exterior Perspective – Preferred Solution



View Looking Northeast



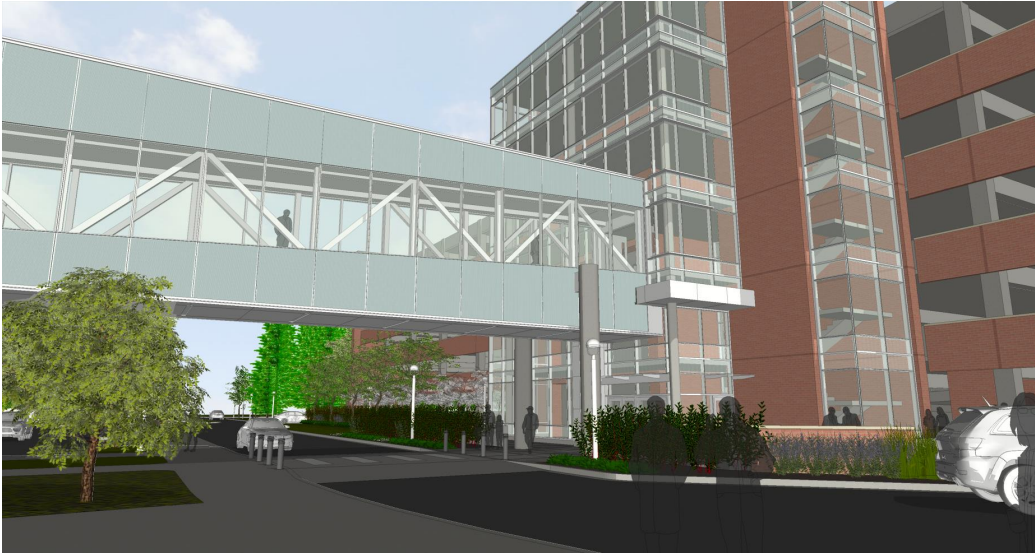
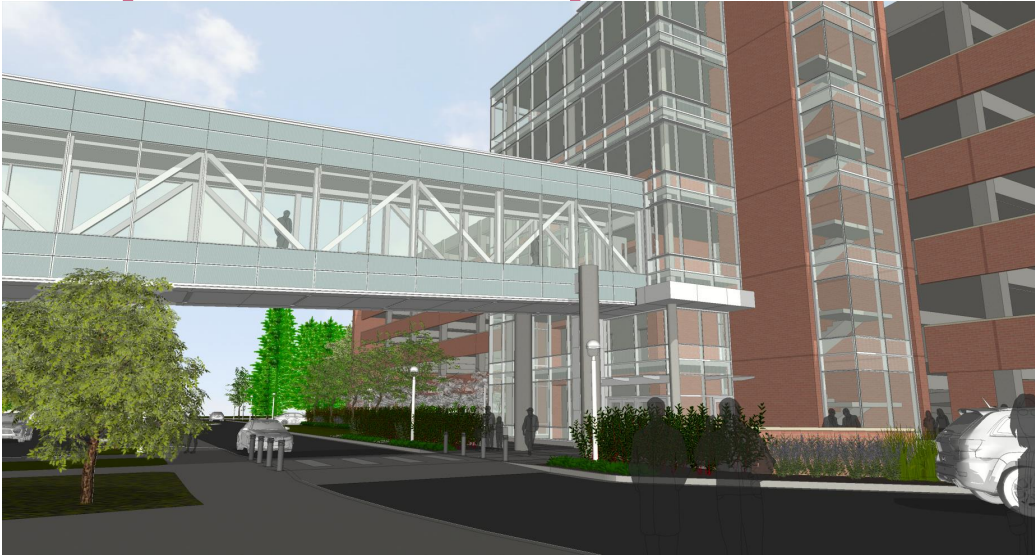
Exterior Perspective – Alternate Study 1



View Looking Northeast



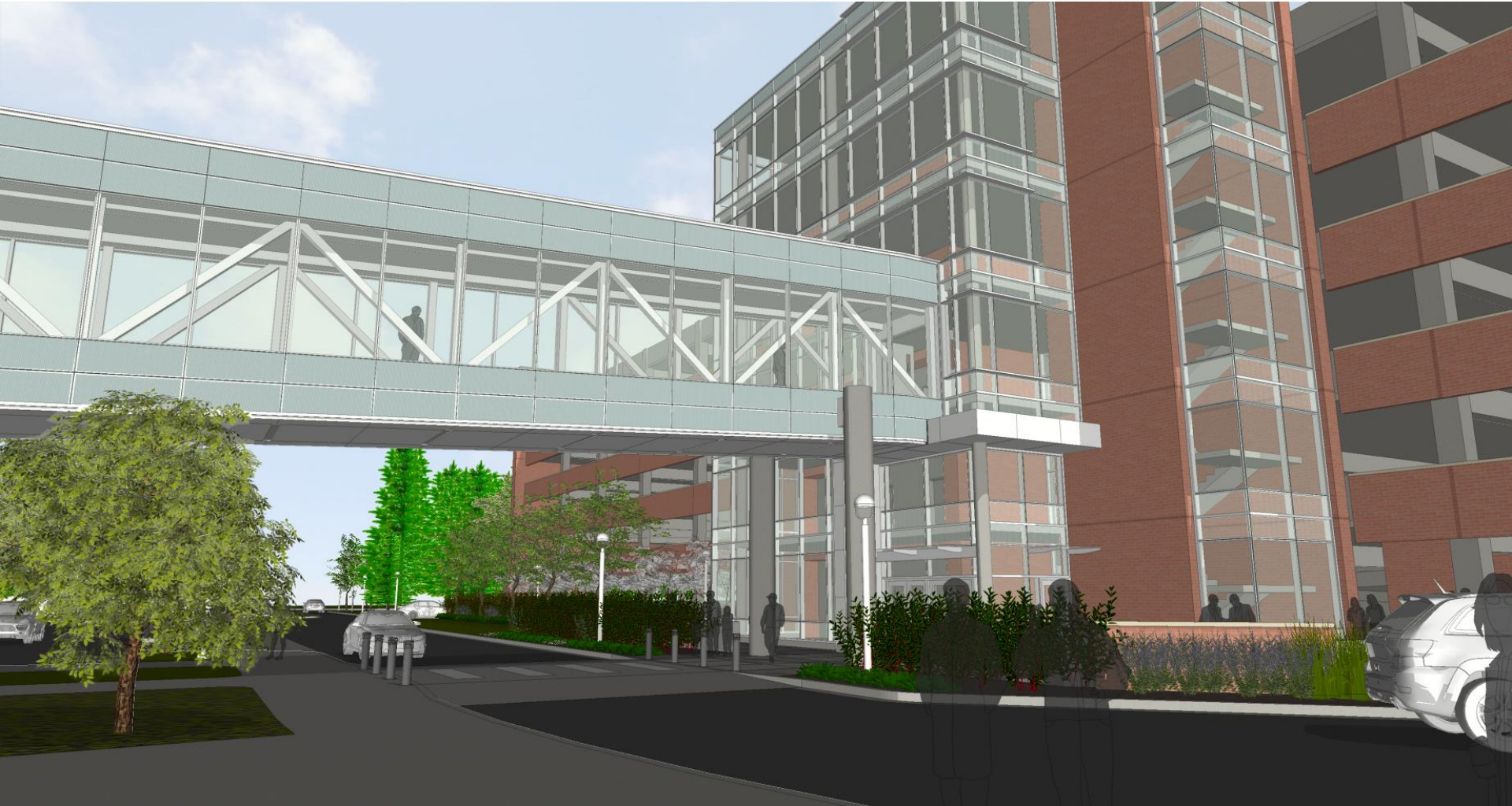
Exterior Perspective Comparison



Sloped Bridge Facade – Level Bridge Façade Comparison



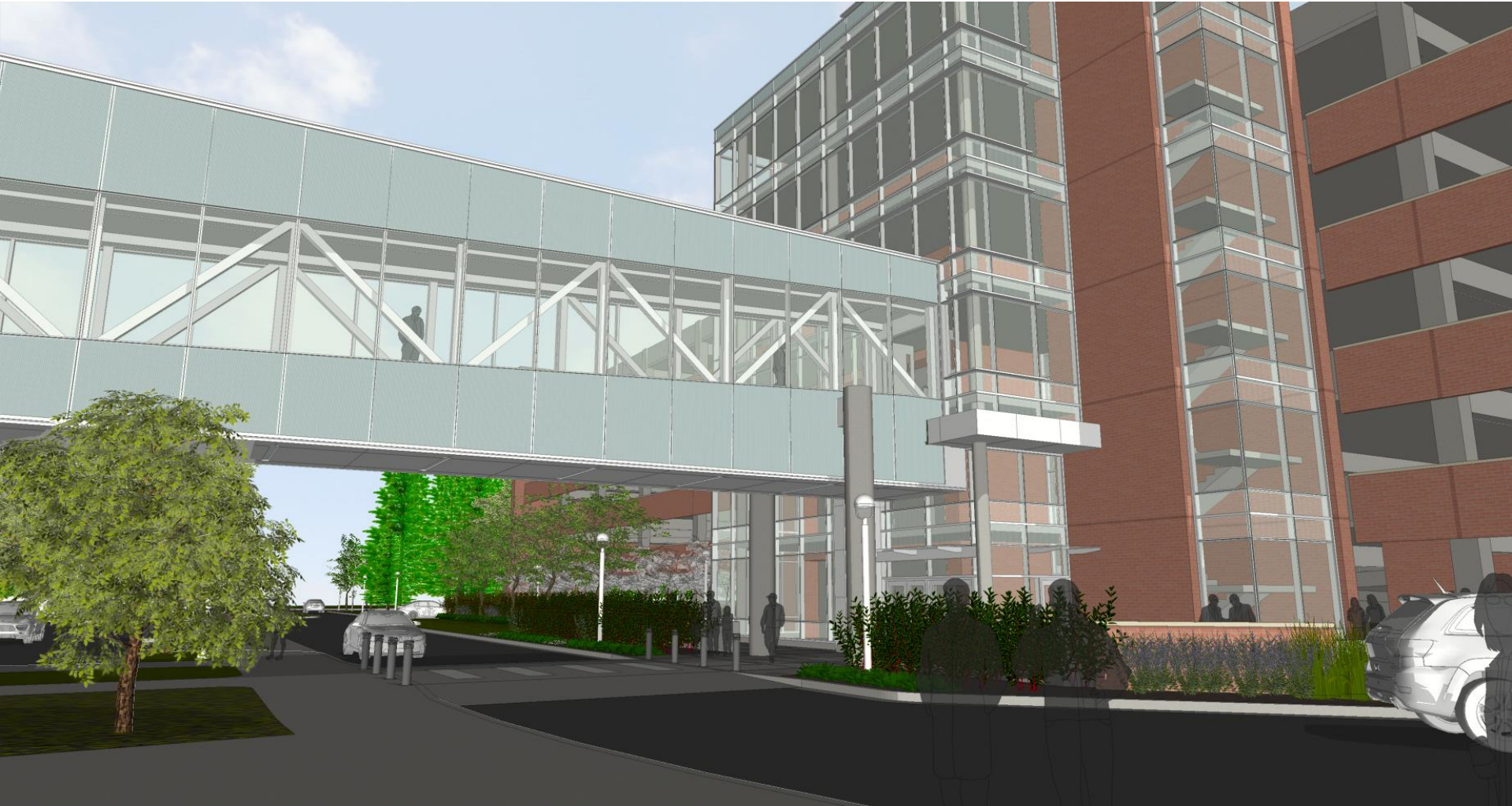
Exterior Perspective – Preferred Solution



View Looking Southeast



Exterior Perspective – Alternate Study 1



View Looking Southeast



Exterior Perspective Comparison



Sloped Bridge Facade – Level Bridge Façade Comparison

Exterior Perspective – Preferred Solution



View Looking South



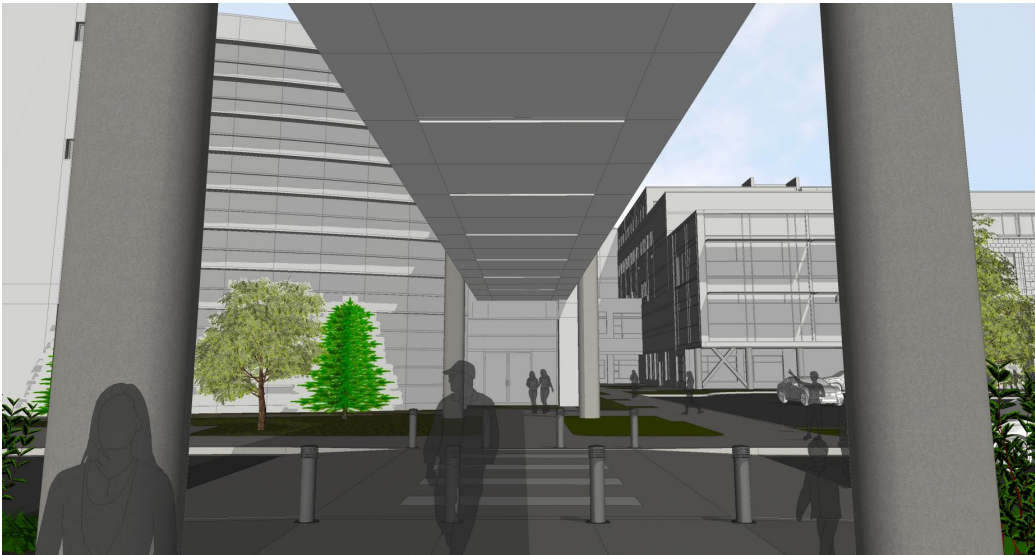
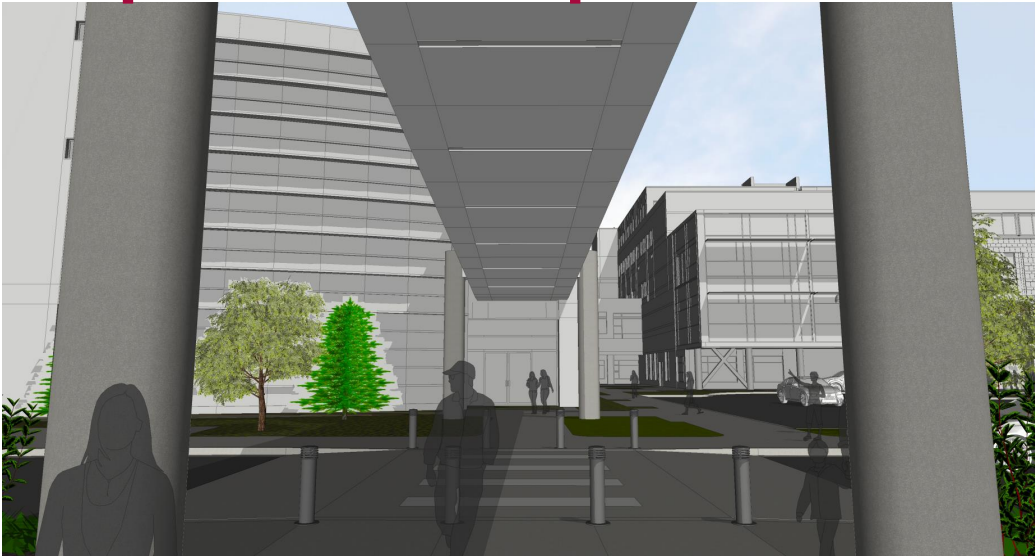
Exterior Perspective – Alternate Study 1



View Looking South



Exterior Perspective Comparison



Sloped Bridge Facade – Level Bridge Façade Comparison

Exterior Perspective – Preferred Solution



View Looking North



Exterior Perspective – Alternate Study 1



View Looking North



II. Perspective Comparisons [Alternate 2]

Exterior Perspective Comparison



Sloped Bridge Facade – Level Bridge Façade Comparison

Exterior Perspective – Preferred Solution



Aerial View Looking Southwest



Exterior Perspective – Alternate Study 2



Aerial View Looking Southwest

Exterior Perspective Comparison



Sloped Bridge Facade – Level Bridge Façade Comparison

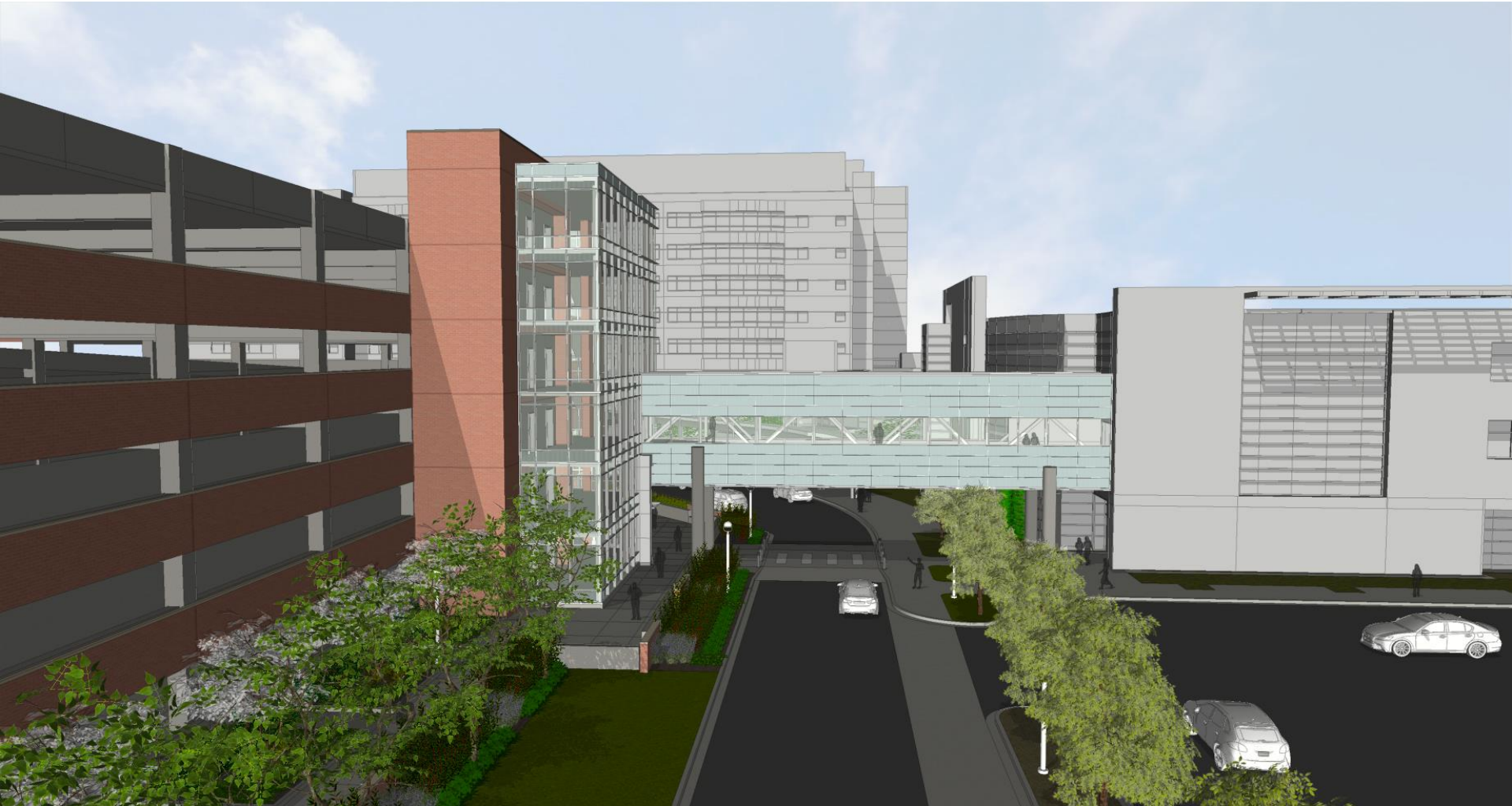
Exterior Perspective – Preferred Solution



Aerial View Looking West

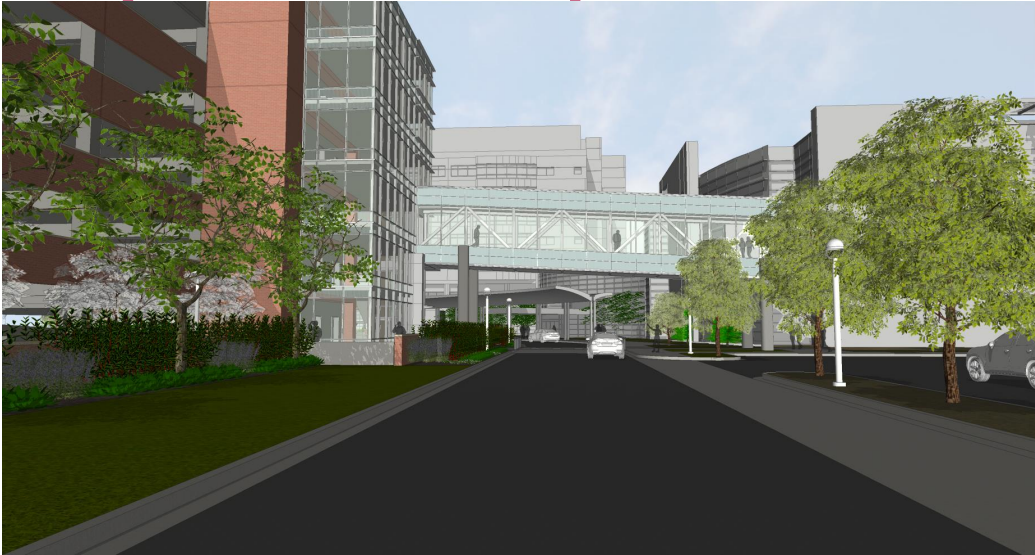


Exterior Perspective – Alternate Study 2



Aerial View Looking West

Exterior Perspective Comparison



Sloped Bridge Facade – Level Bridge Façade Comparison

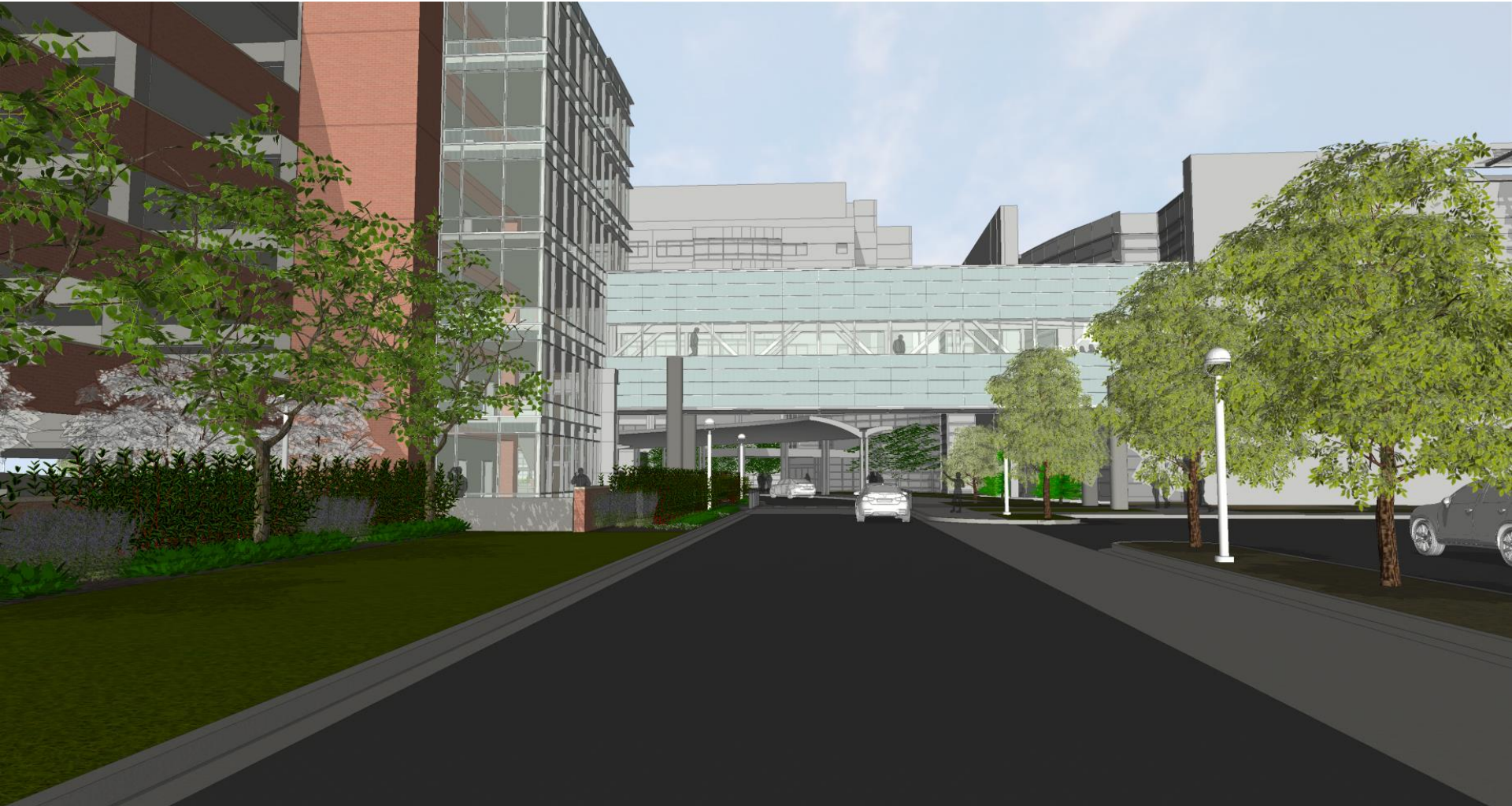
Exterior Perspective – Preferred Solution



View Looking West



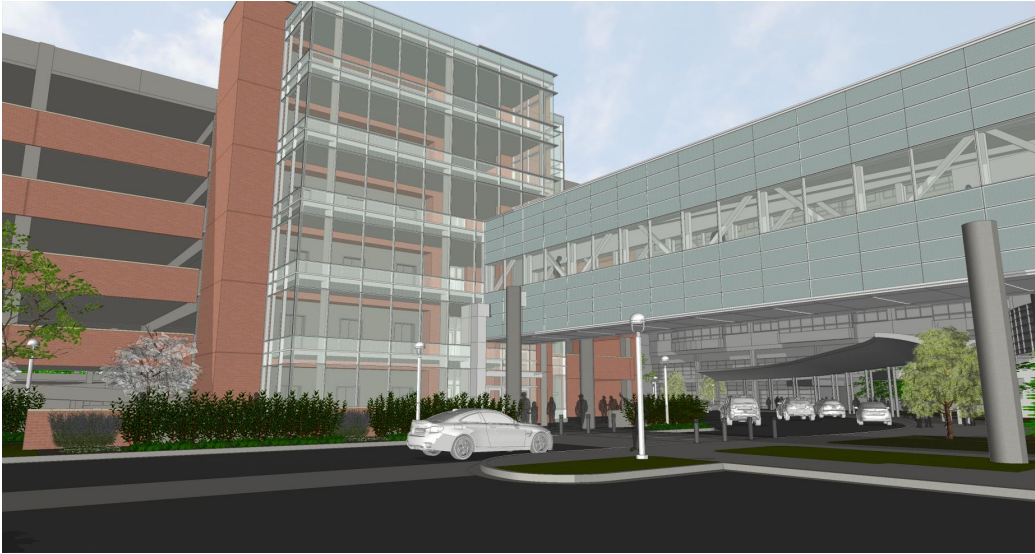
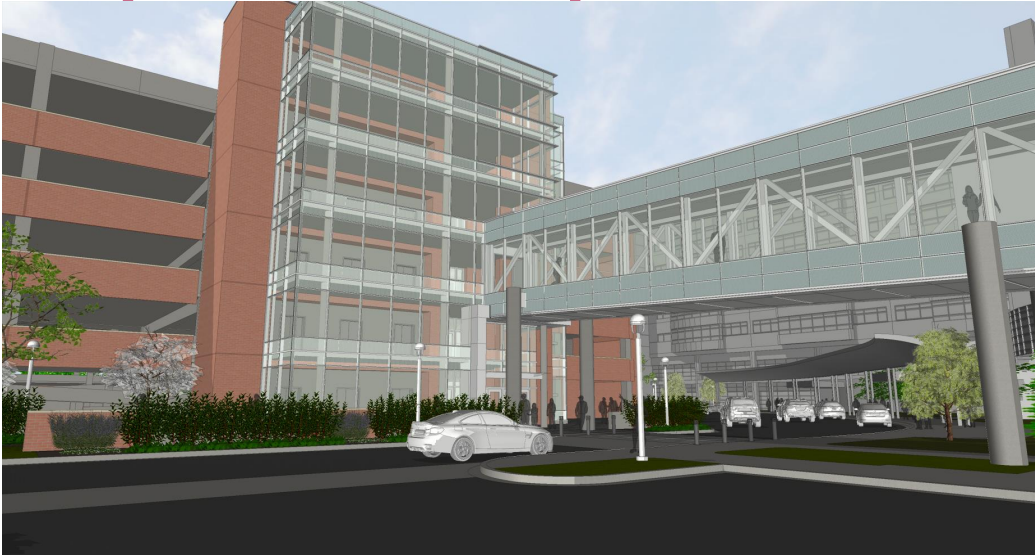
Exterior Perspective – Alternate Study 2



View Looking West

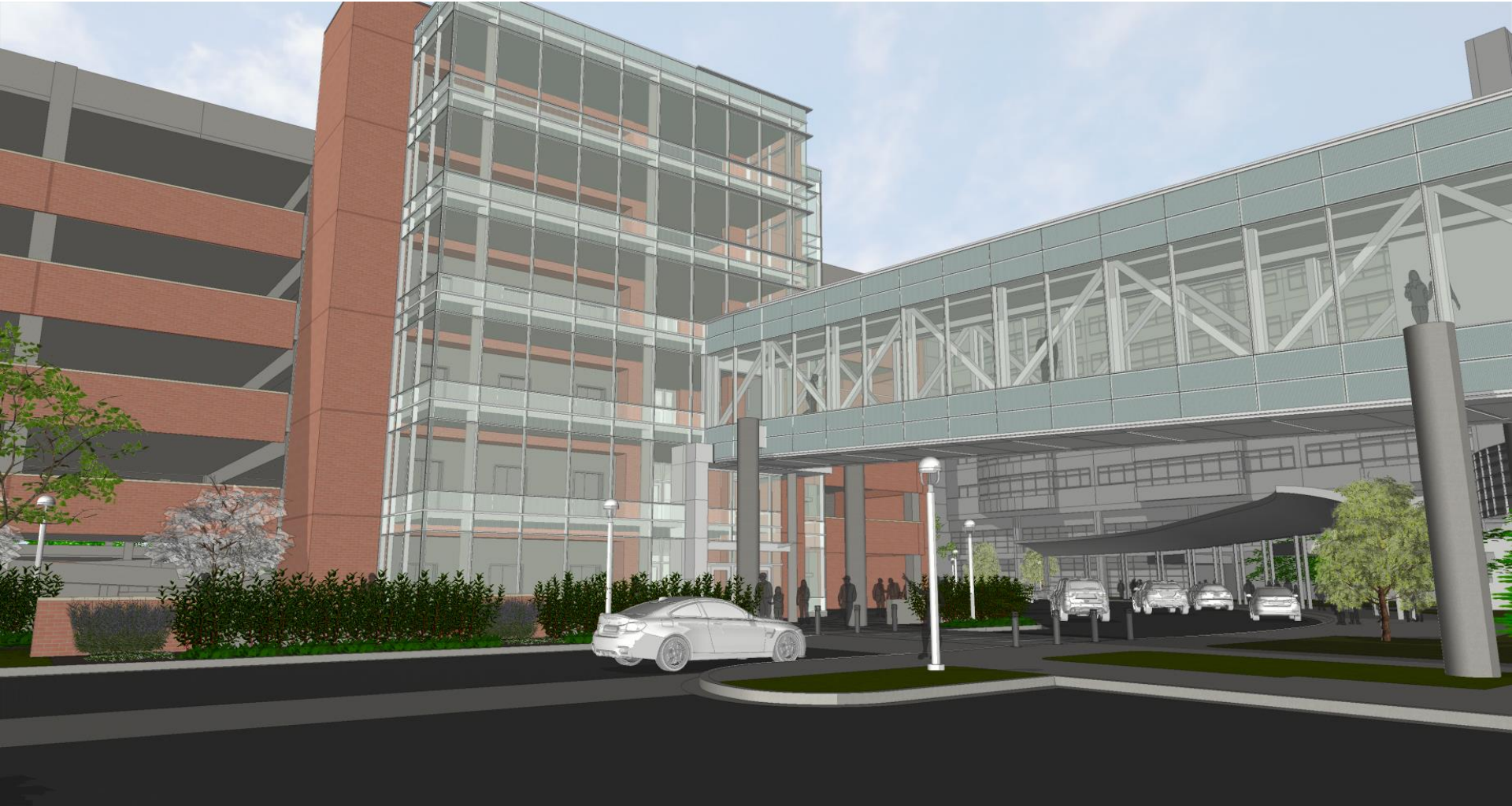


Exterior Perspective Comparison



Sloped Bridge Facade – Level Bridge Façade Comparison

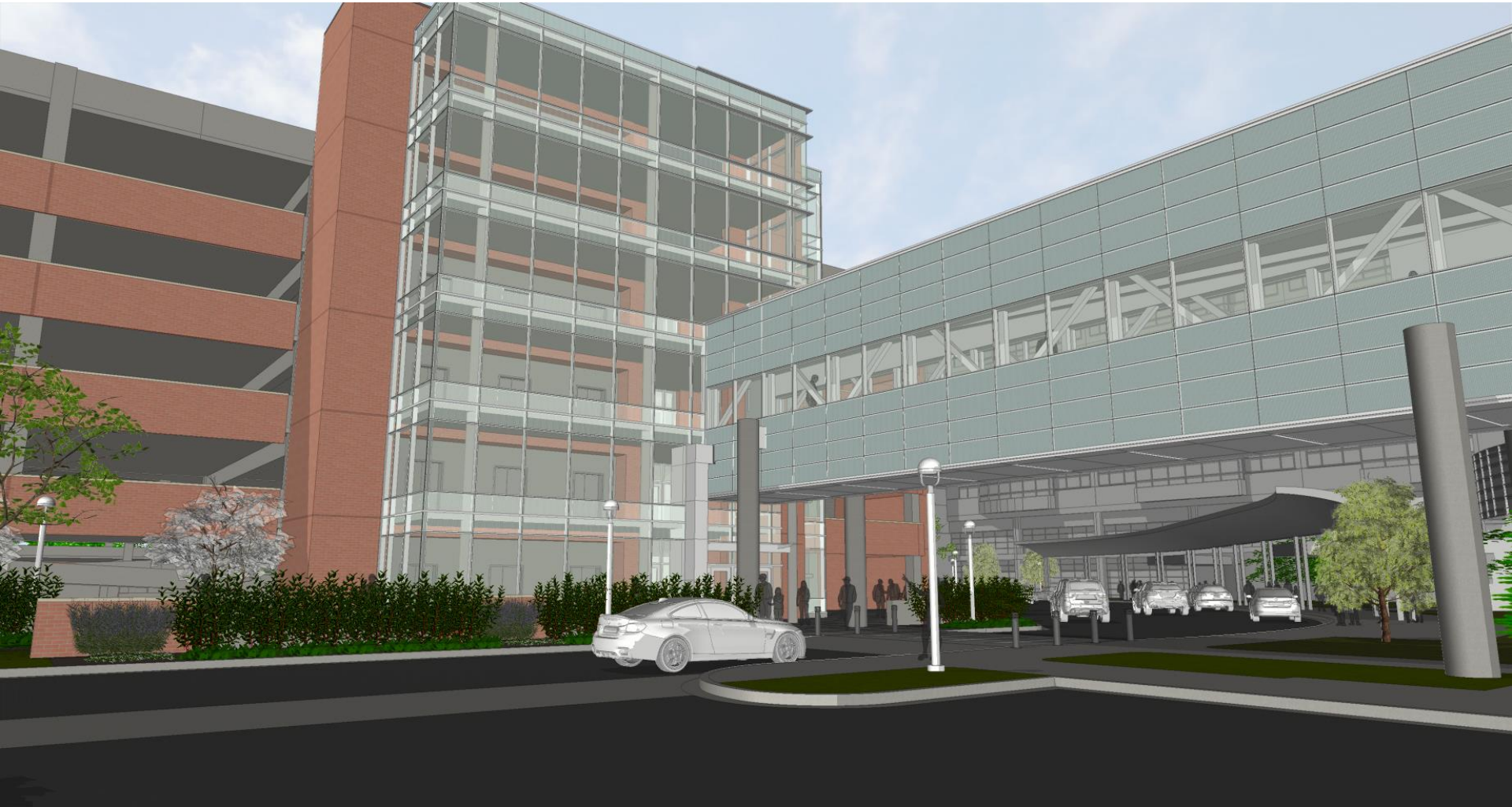
Exterior Perspective – Preferred Solution



View Looking Southwest

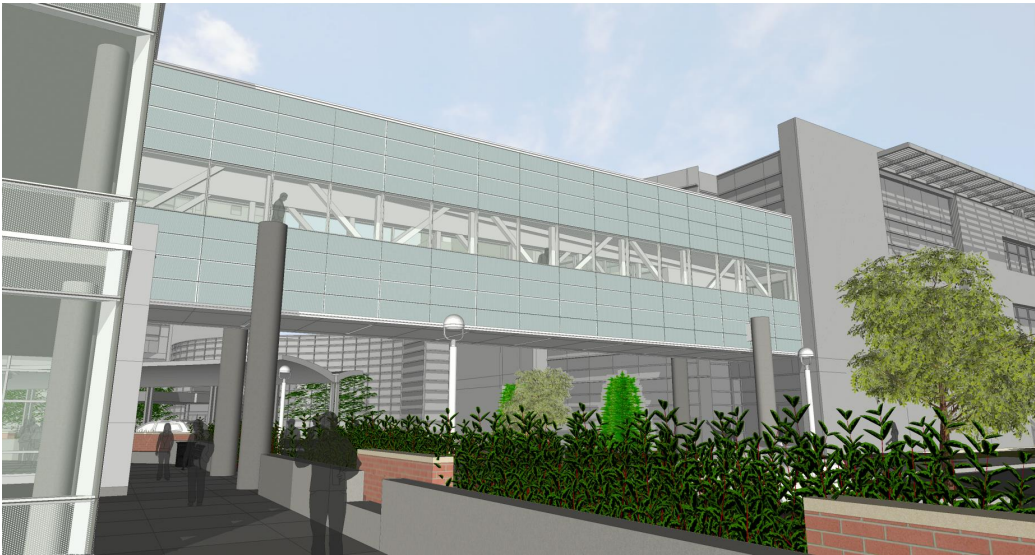
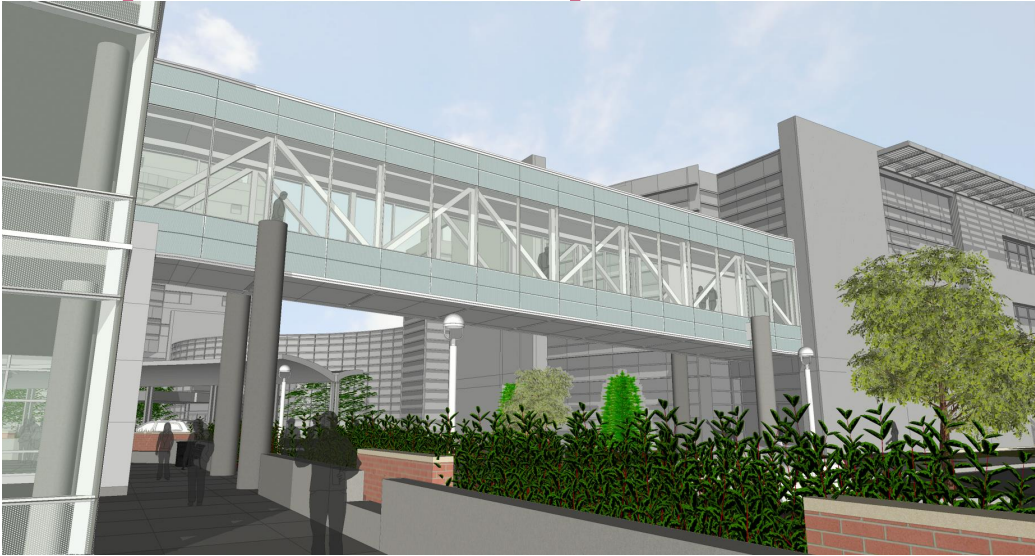


Exterior Perspective – Alternate Study 2



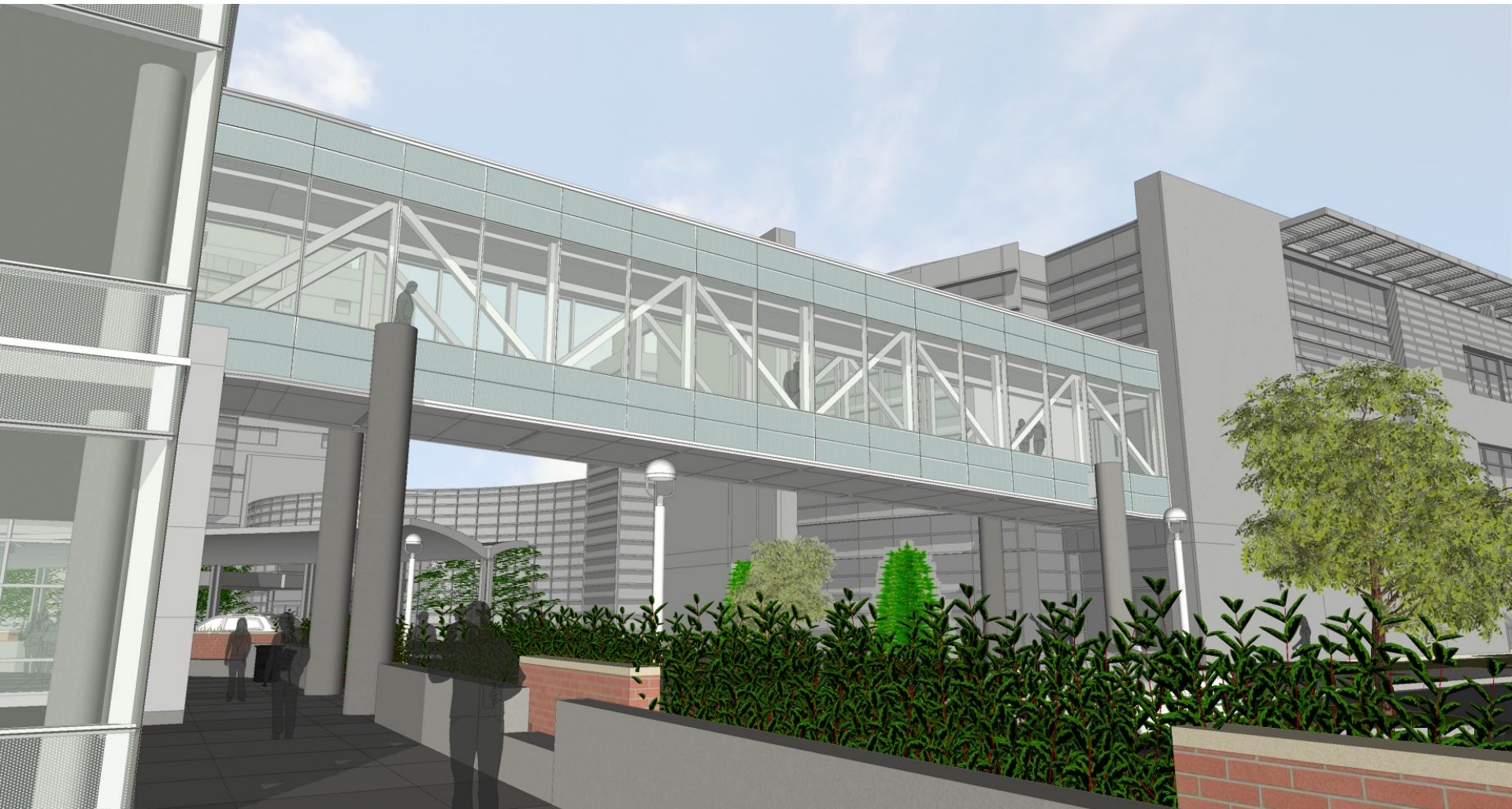
View Looking Southwest

Exterior Perspective Comparison



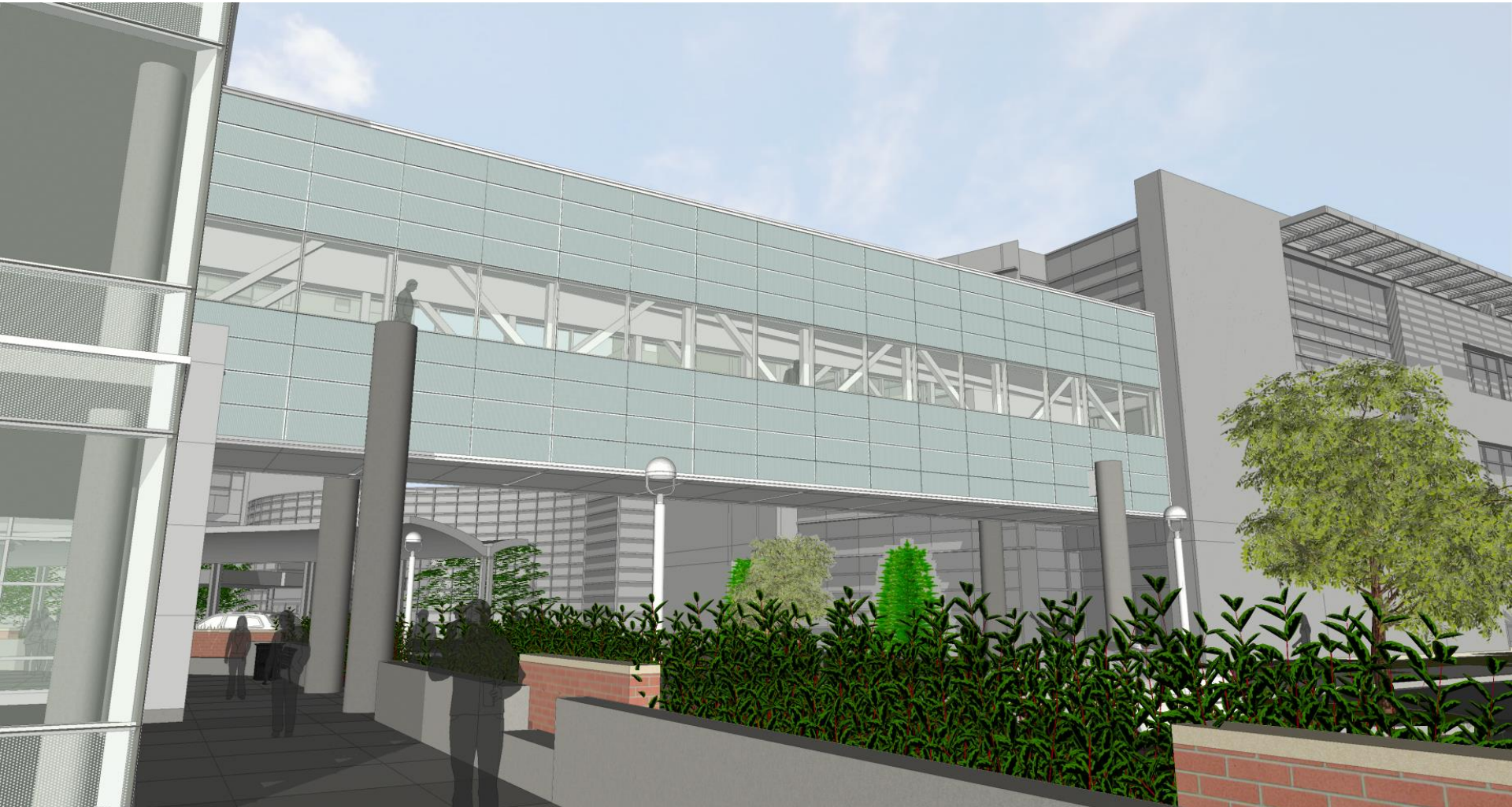
Sloped Bridge Facade – Level Bridge Façade Comparison

Exterior Perspective – Preferred Solution



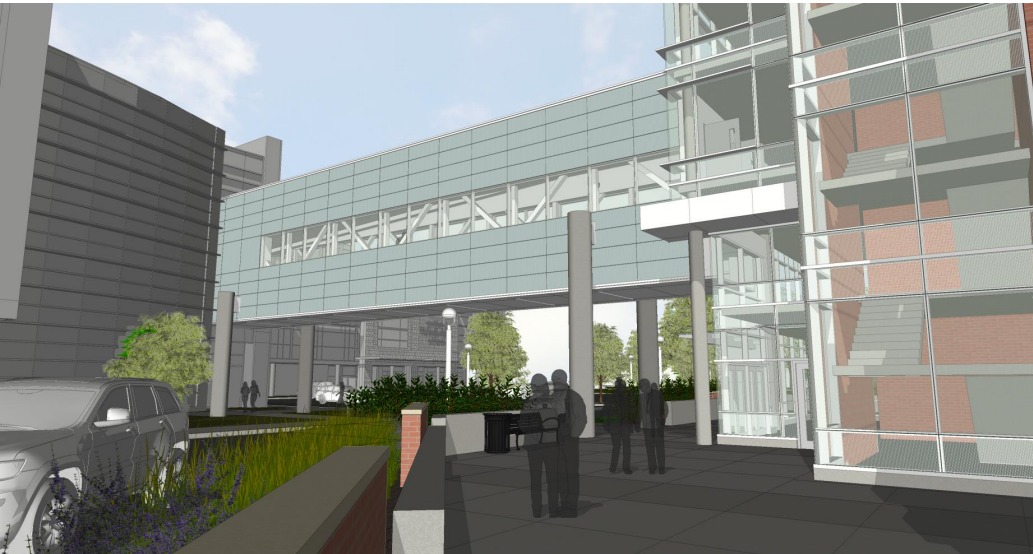
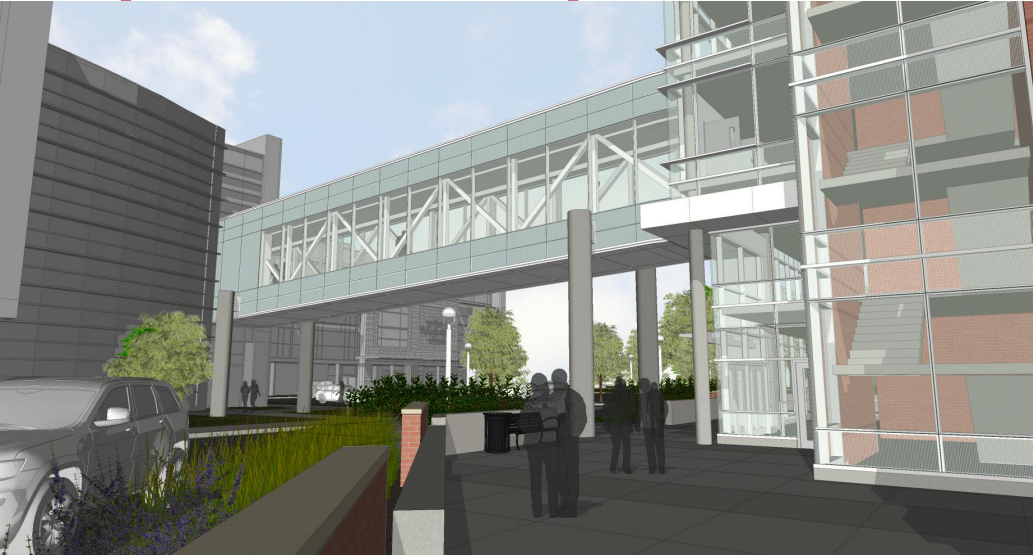
View Looking Northwest

Exterior Perspective – Alternate Study 2



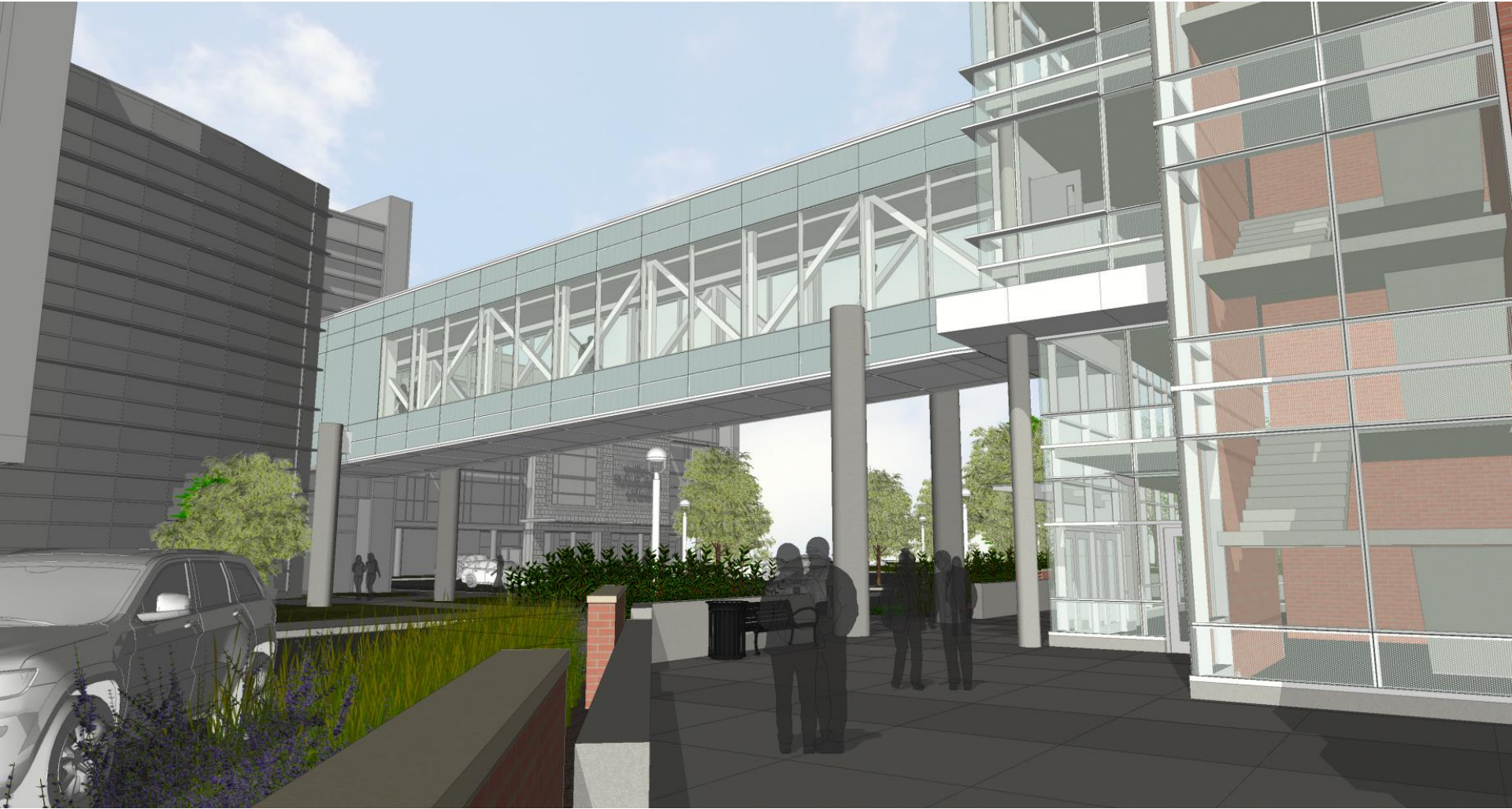
View Looking Northwest

Exterior Perspective Comparison



Sloped Bridge Façade – Level Bridge Façade Comparison

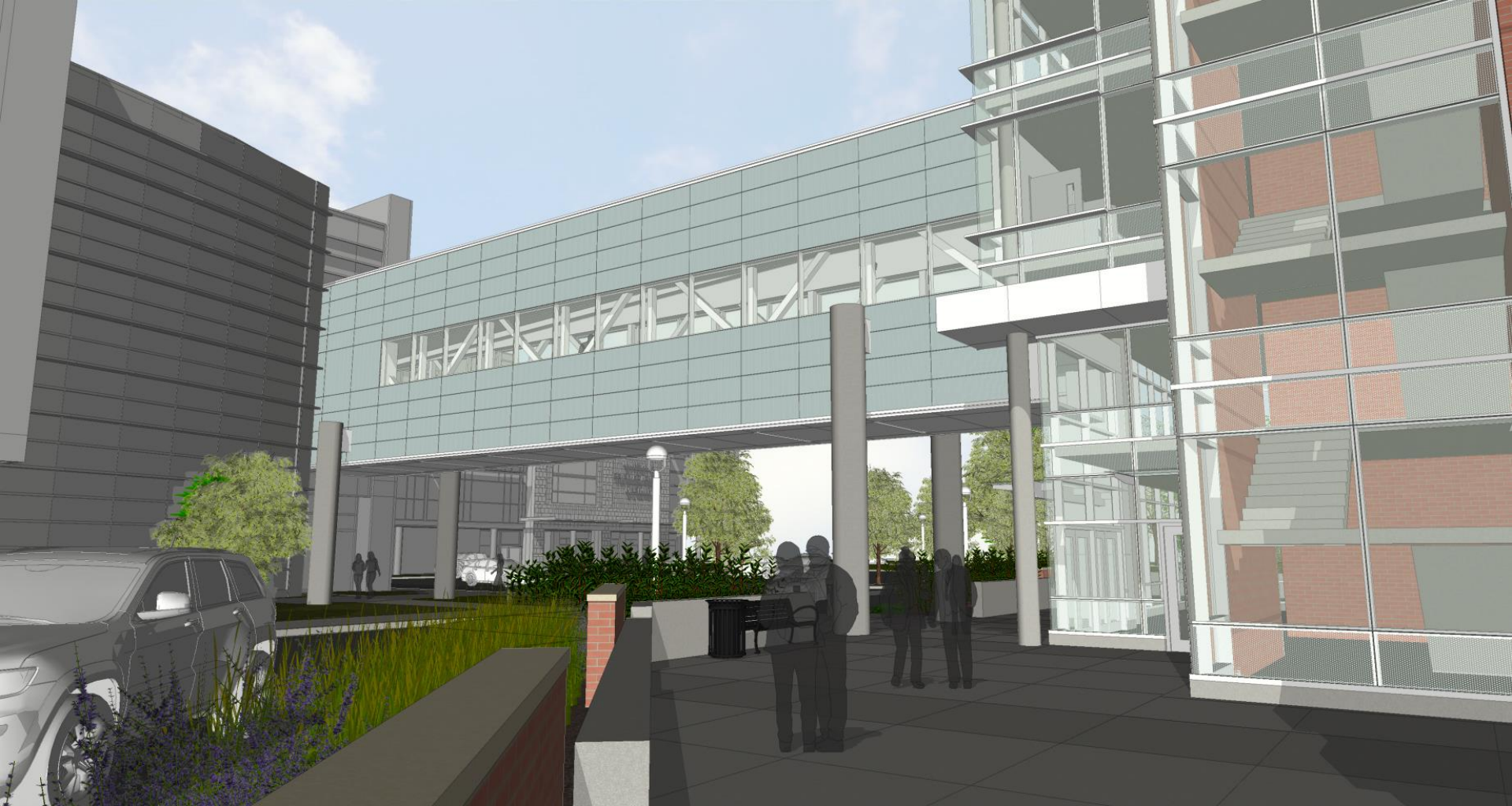
Exterior Perspective – Preferred Solution



View Looking Northeast



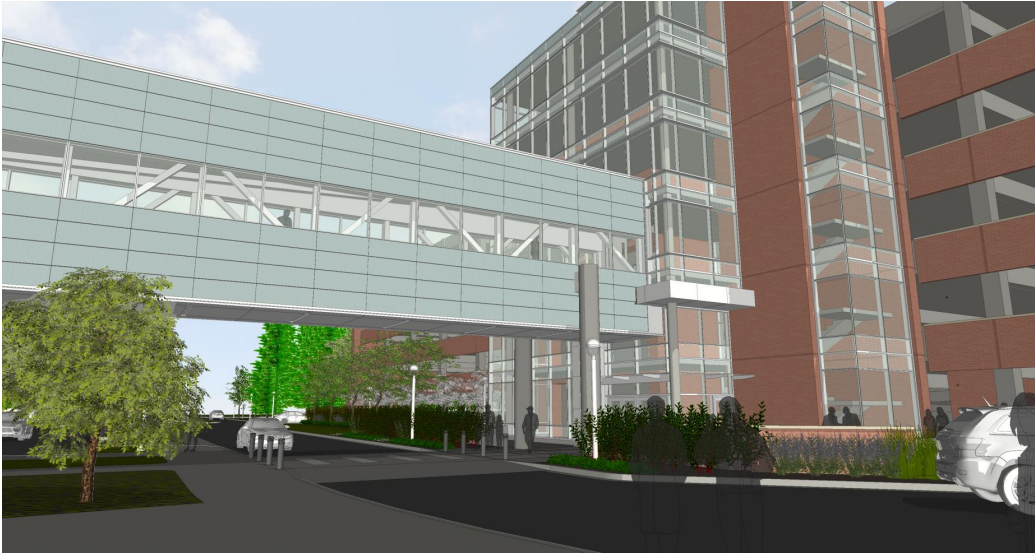
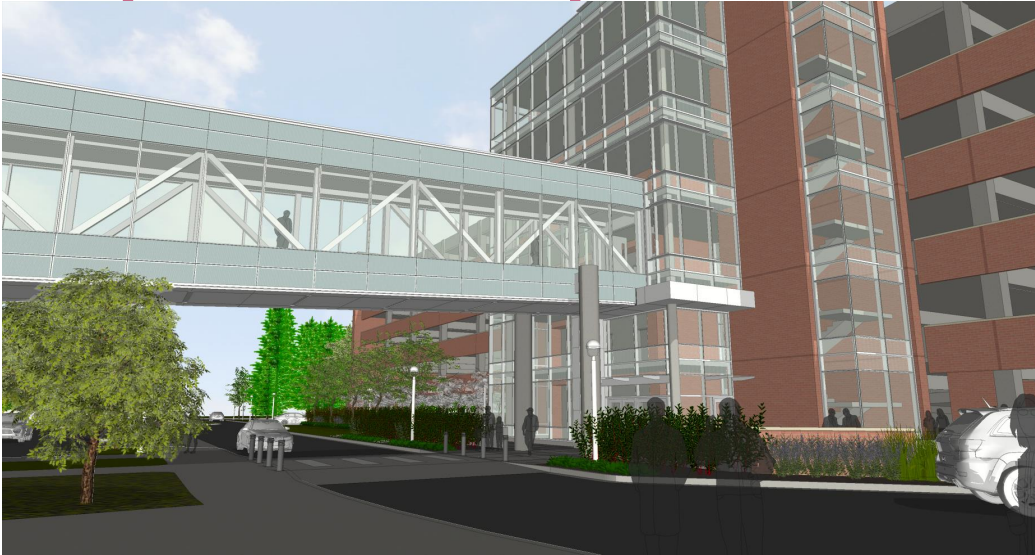
Exterior Perspective – Alternate Study 2



View Looking Northeast



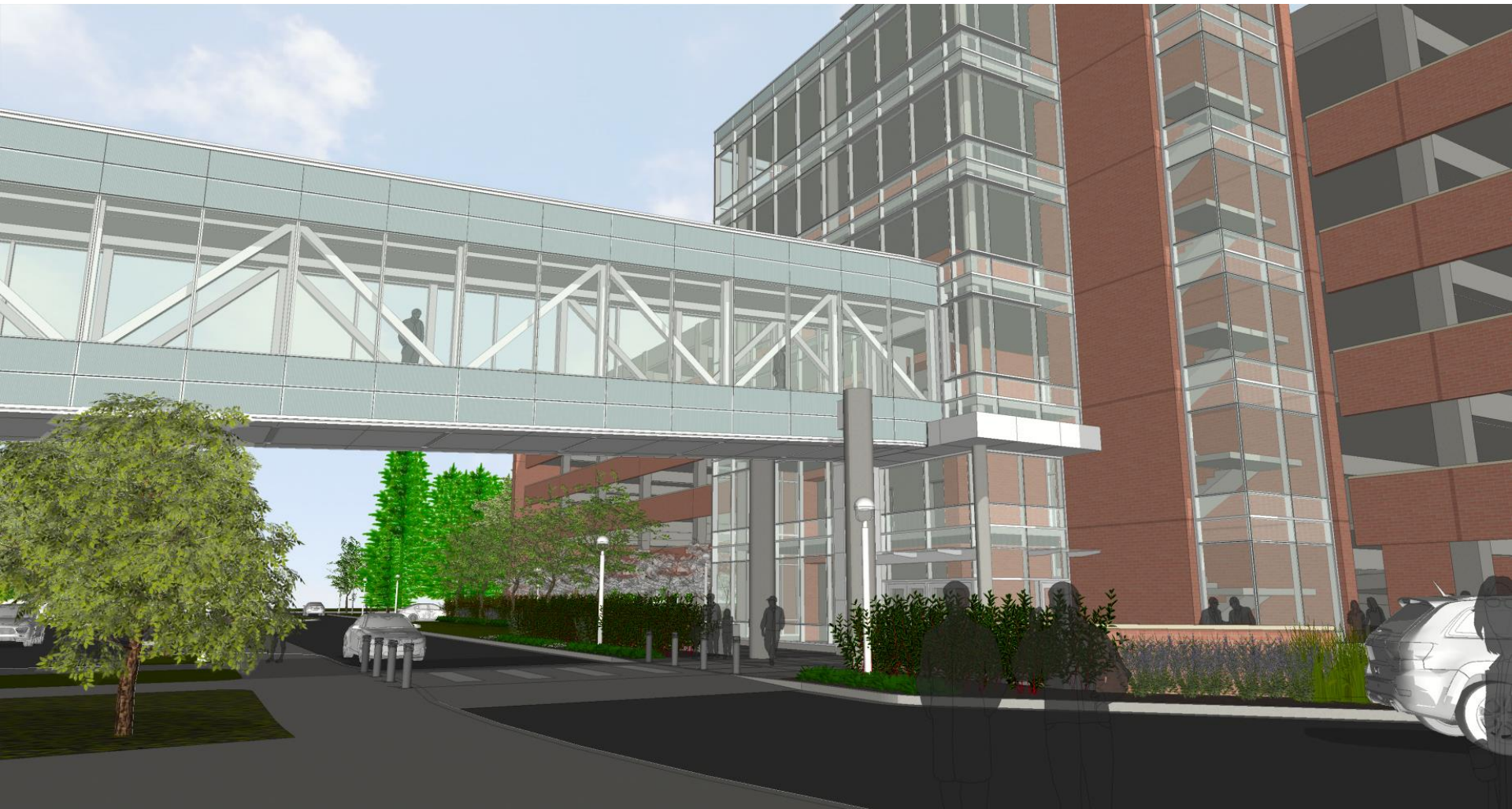
Exterior Perspective Comparison



Sloped Bridge Facade – Level Bridge Façade Comparison

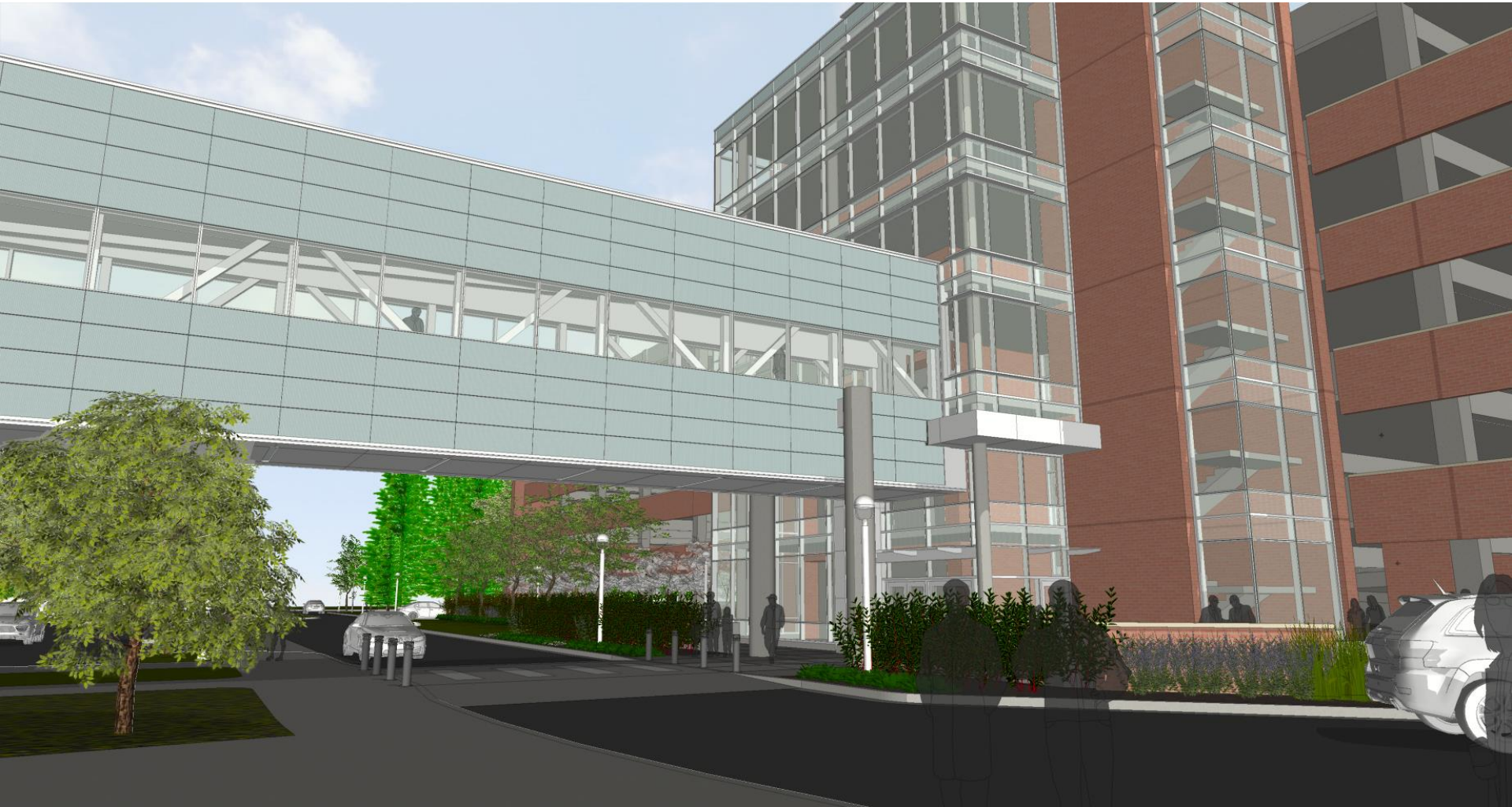


Exterior Perspective – Preferred Solution



View Looking Southeast

Exterior Perspective – Alternate Study 2



View Looking Southeast

Exterior Perspective Comparison



Sloped Bridge Facade – Level Bridge Façade Comparison

Exterior Perspective – Preferred Solution



View Looking South



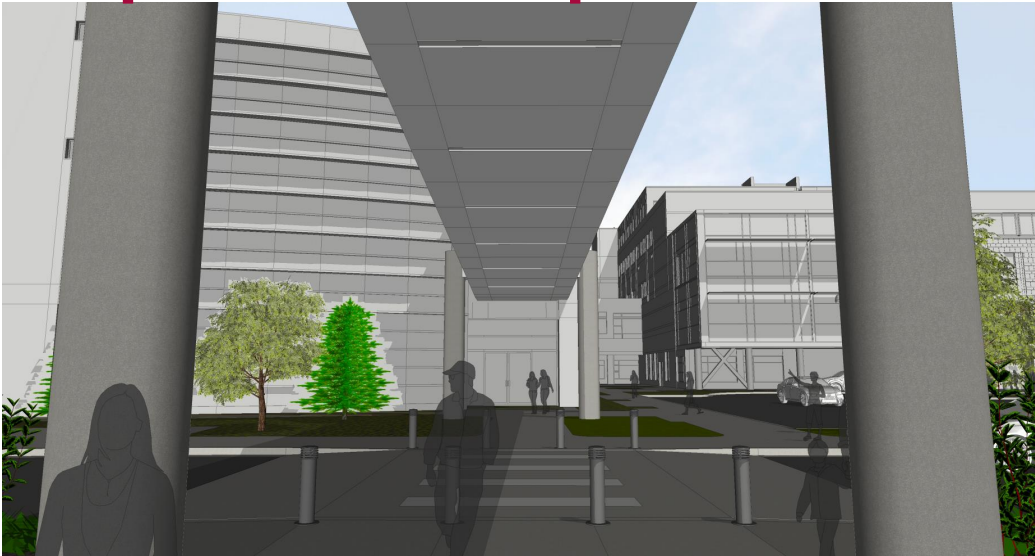
Exterior Perspective – Alternate Study 2



View Looking South



Exterior Perspective Comparison



Sloped Bridge Facade – Level Bridge Façade Comparison



Exterior Perspective – Preferred Solution



View Looking North



Exterior Perspective – Alternate Study 2



View Looking North

