

June 12, 2020

# UNIVERSITY OF COLORADO DENVER

CONCEPTUAL DESIGN DRB REVIEW

LYNX CROSSING RESIDENCE HALL  
RENOVATION

**hord | coplan | macht**

# AGENDA

Introductions

Building Scope

Site Scope

Signage Scope

Questions & Discussion





# INTRODUCTIONS

# PROJECT TEAM



**JERED MINTER**

CU Denver  
Campus Architect



**BEN BOHMANN**

CU Denver | Anschutz  
Medical Campus  
Project Manager



**GWEN GILLEY**

Hord Coplan Macht  
Principal in Charge



**JASON BENTLEY**

Hord Coplan Macht  
Project Manager



**ANGELA SCHMITZ**

Hord Coplan Macht  
Graphic Designer





# PROJECT INTRODUCTION

# PROJECT OVERVIEW

**Existing Building Renovation**

**250,775 GSF - Constructed 2006**

**4 Stories East, West and South Wings | 5 Stories at North Wing**

**230 Residential Suites | 511 Bedrooms | 722 Beds**

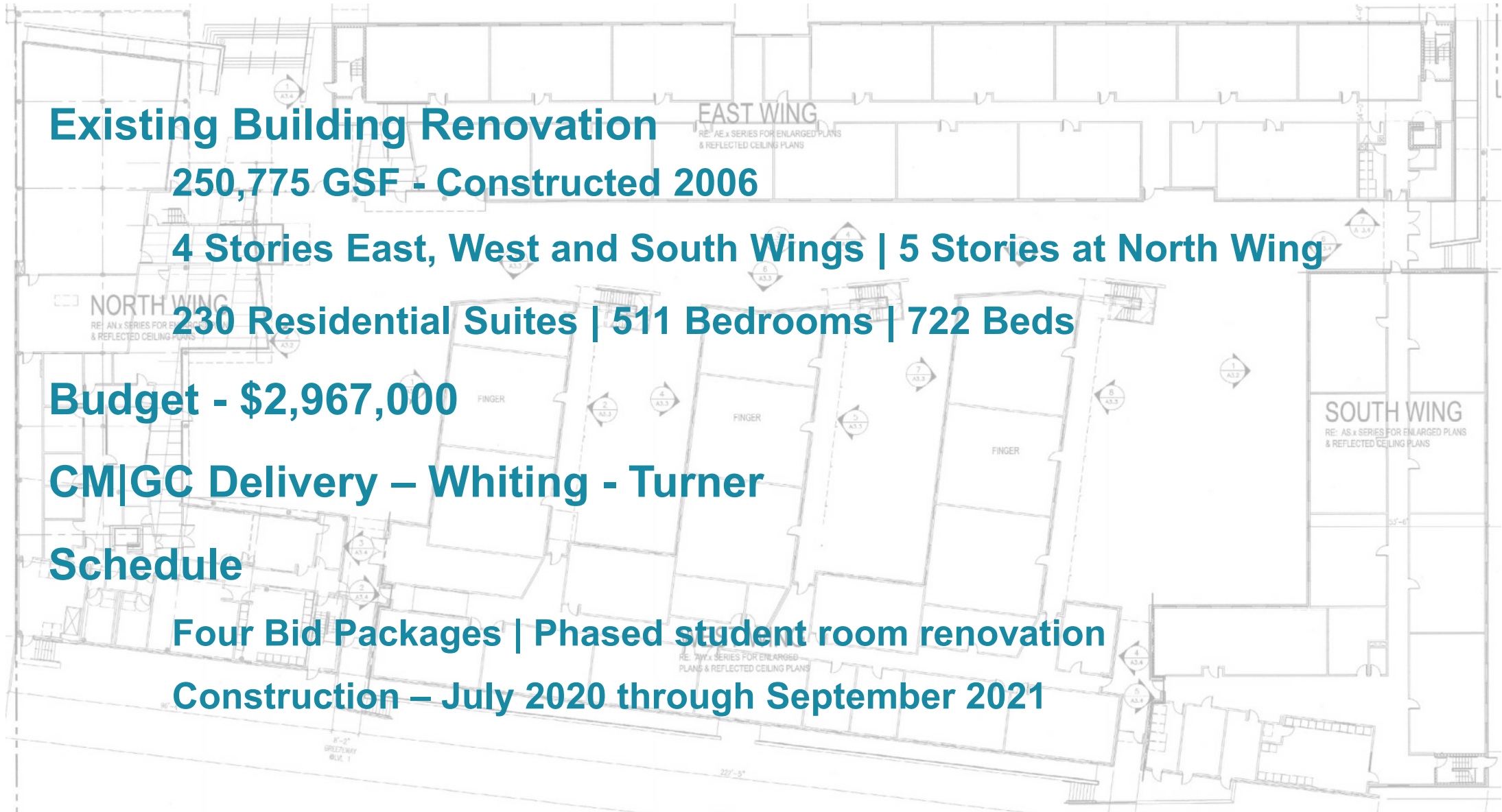
**Budget - \$2,967,000**

**CM|GC Delivery – Whiting - Turner**

**Schedule**

**Four Bid Packages | Phased student room renovation**

**Construction – July 2020 through September 2021**





# CENTRAL LOCATION



LYNX CROSSING





## SURROUNDING DEVELOPMENTS







# TRANSPORTATION LINKS





# SITE CONTEXT



AURARIA PKWY

WALNUT STREET

PARKING GARAGE

7TH STREET

ENTRY

LYNX CROSSING

4TH STREET

LIGHTRAIL STATION

LARIMER STREET

5TH STREET

AURARIA CAMPUS

CURTIS STREET

COLFAX AVENUE



NORTH

I-25

I-25

I-25 S ON RAMP  
I-25 N ON RAMP



# PROJECT GOALS

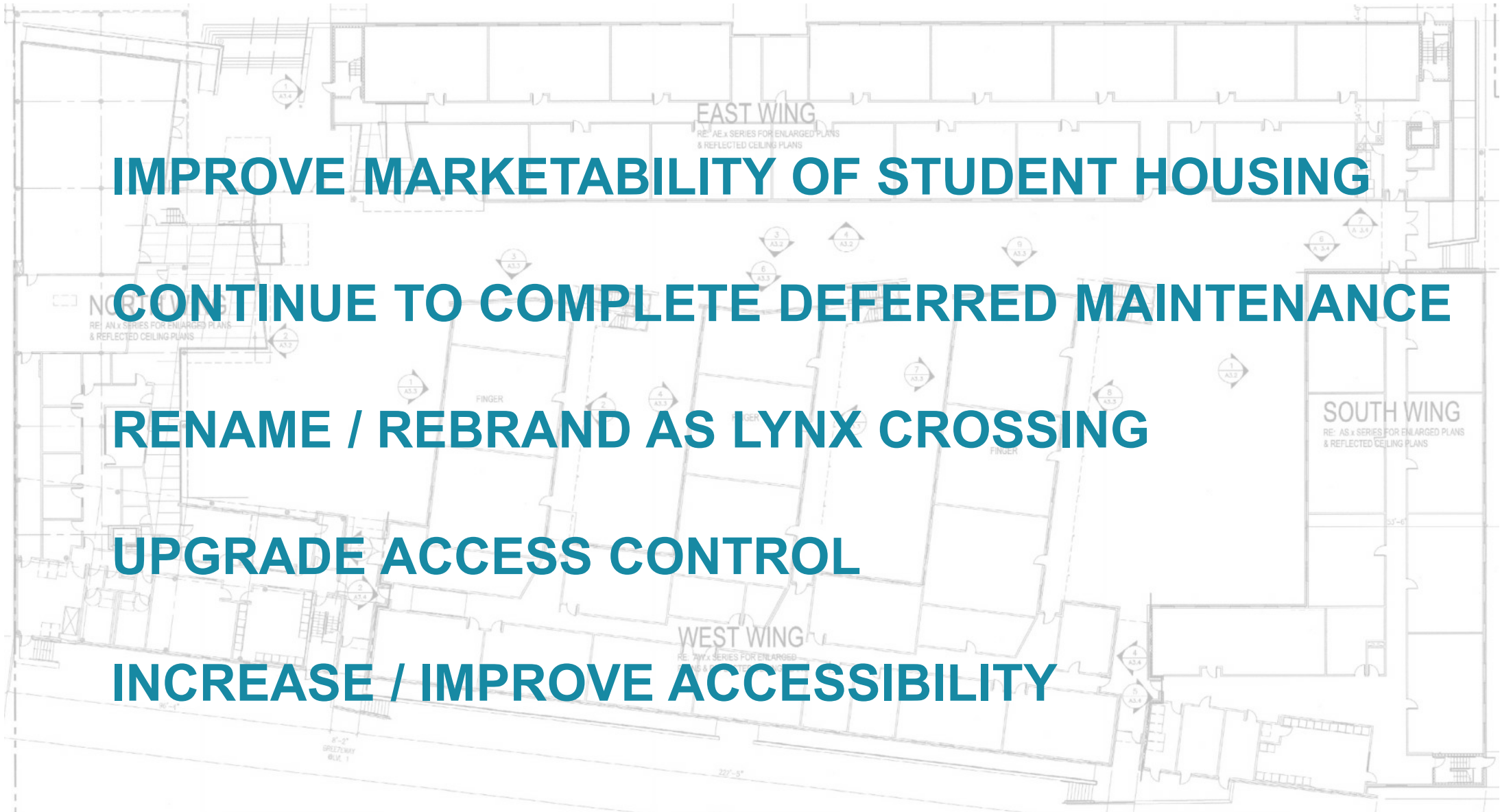
**IMPROVE MARKETABILITY OF STUDENT HOUSING**

**CONTINUE TO COMPLETE DEFERRED MAINTENANCE**

**RENAME / REBRAND AS LYNX CROSSING**

**UPGRADE ACCESS CONTROL**

**INCREASE / IMPROVE ACCESSIBILITY**





# PROJECT SCOPE OVERVIEW

## INTERIOR SCOPE

**Replace Residential Suite Kitchenettes & Flooring - \$1,245,000 / \$5,413/unit**

**Lobby Remodel - \$115,000**

**Miscellaneous Deferred Maintenance Items - \$535,000**

## EXTERIOR SCOPE

**Replace Cement Board - \$100,000**

**Courtyard Canopy Material Replacement - Alternate**

**Amazon Lockers – Amazon provided. University's cost to connect electrical supply**

## SITE SCOPE

**Courtyard Decking Replacement - \$20,000**

**Signage & Branding - \$55,000**

**Miscellaneous Deferred Maintenance Items - \$351,000**

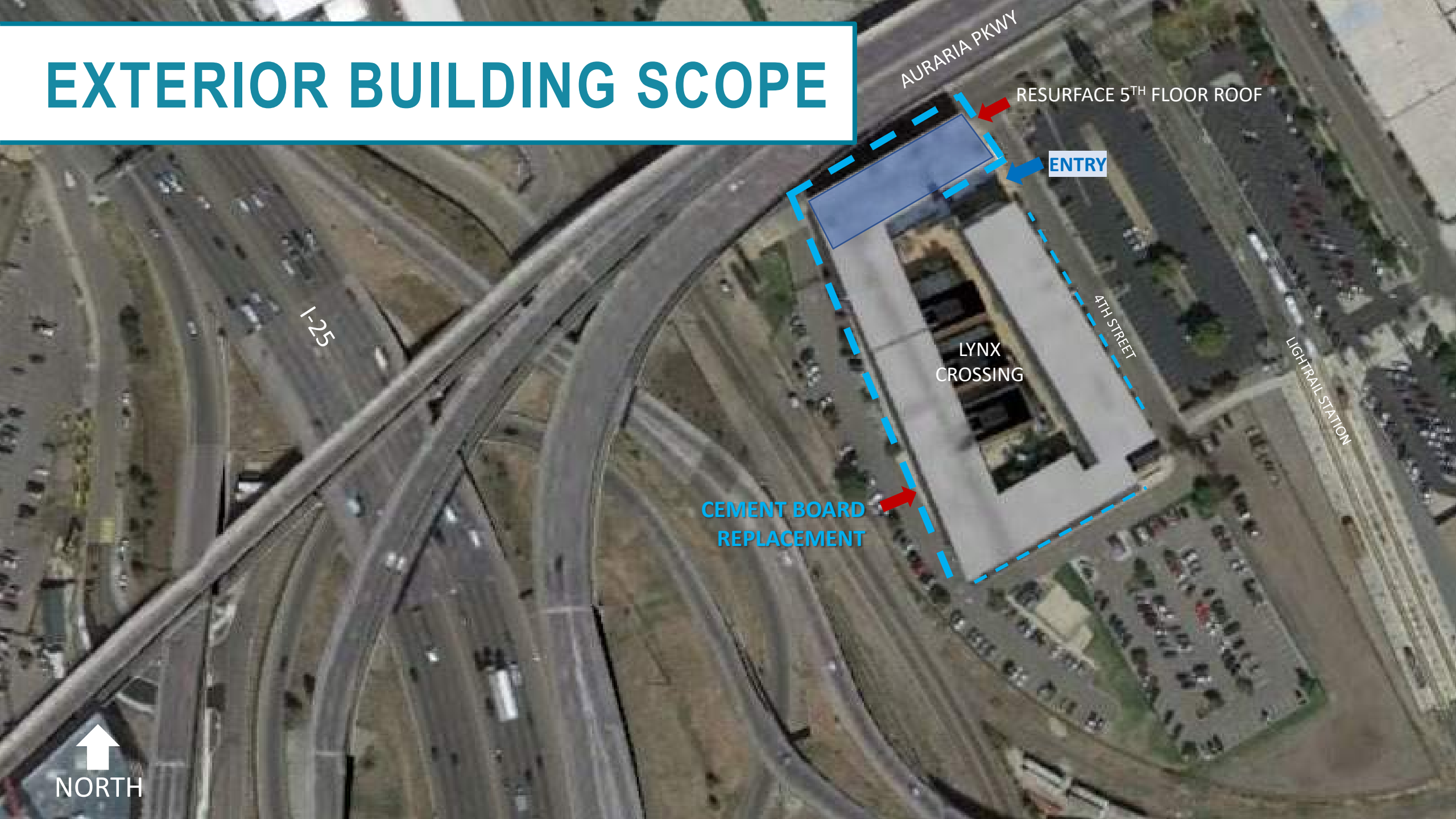




# BUILDING SCOPE



# EXTERIOR BUILDING SCOPE



AURARIA PKWY

RESURFACE 5<sup>TH</sup> FLOOR ROOF

ENTRY

LYNX  
CROSSING

4TH STREET

LIGHTRAIL STATION

CEMENT BOARD  
REPLACEMENT

I-25





# CEMENT BOARD REPLACEMENT

Cement board panels at West elevation





# CEMENT BOARD REPLACEMENT

## METAL PANEL COLOR OPTIONS – 12” WIDE FLAT, SMOOTH PANEL WITH VERTICAL SEAMS

Black

Classic Bronze

Medium Bronze

Hartford Green

Forest Green

Hemlock Green

Teal

Patina Green

Chocolate Brown

Boysenberry

Redwood

Mission Red

Sierra Tan

Rawhide

Concord Cream

Sandstone

Regal Blue

EST. EXISTING COLOR

Slate Blue

Rocky Grey

Siam Blue

Charcoal Grey

Slate Grey

Dove Grey

EST. EXISTING COLOR

Ascot White

Bone White

Anchor Grey

Thunder Grey

Ash Grey

Matte Black

Char Brown

Almond

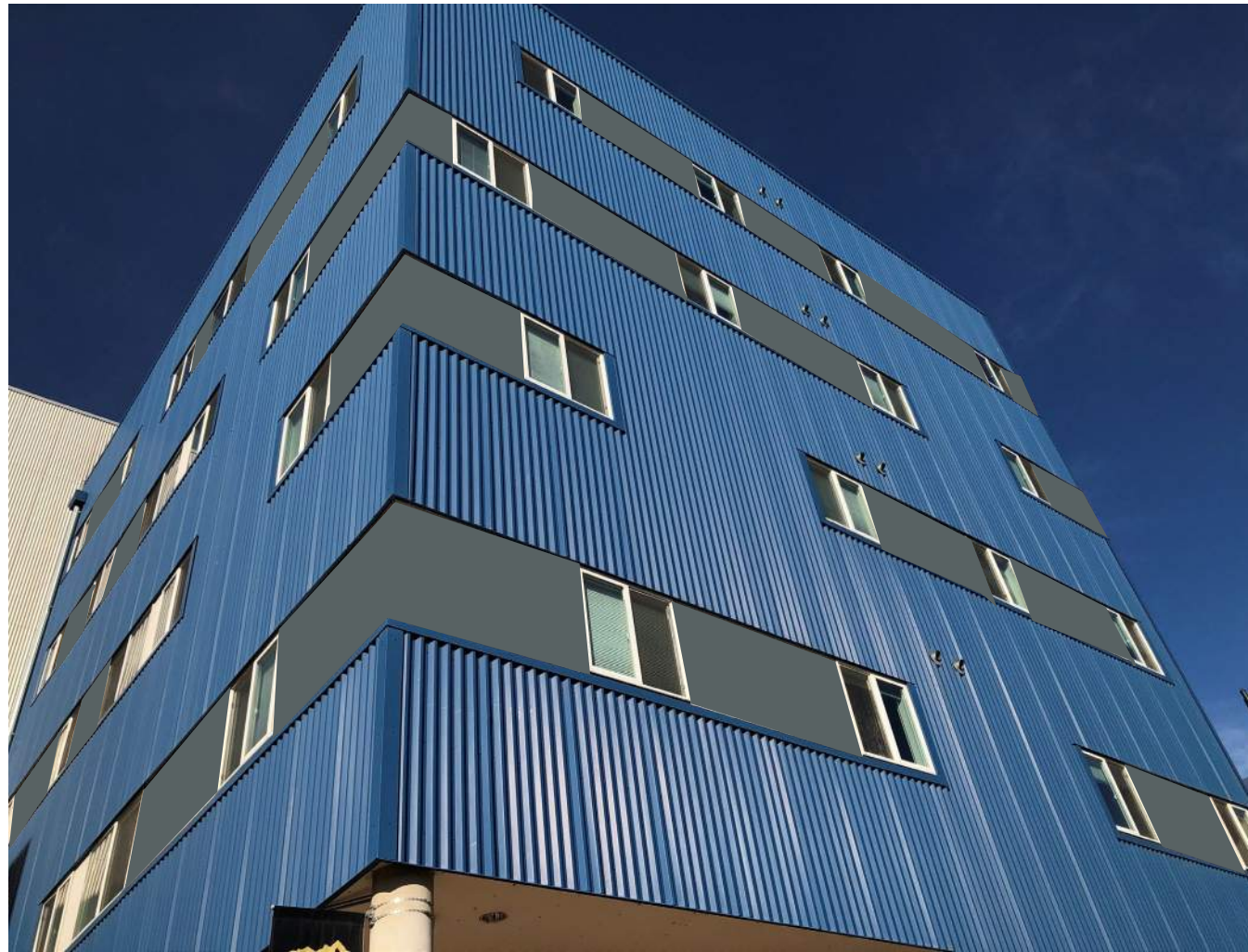
Matte Finish

70% PVDF resin based coatings, as noted above, designed to simulate natural metal hues in a high performance paint system. [Download color chart](#)



# CEMENT BOARD REPLACEMENT

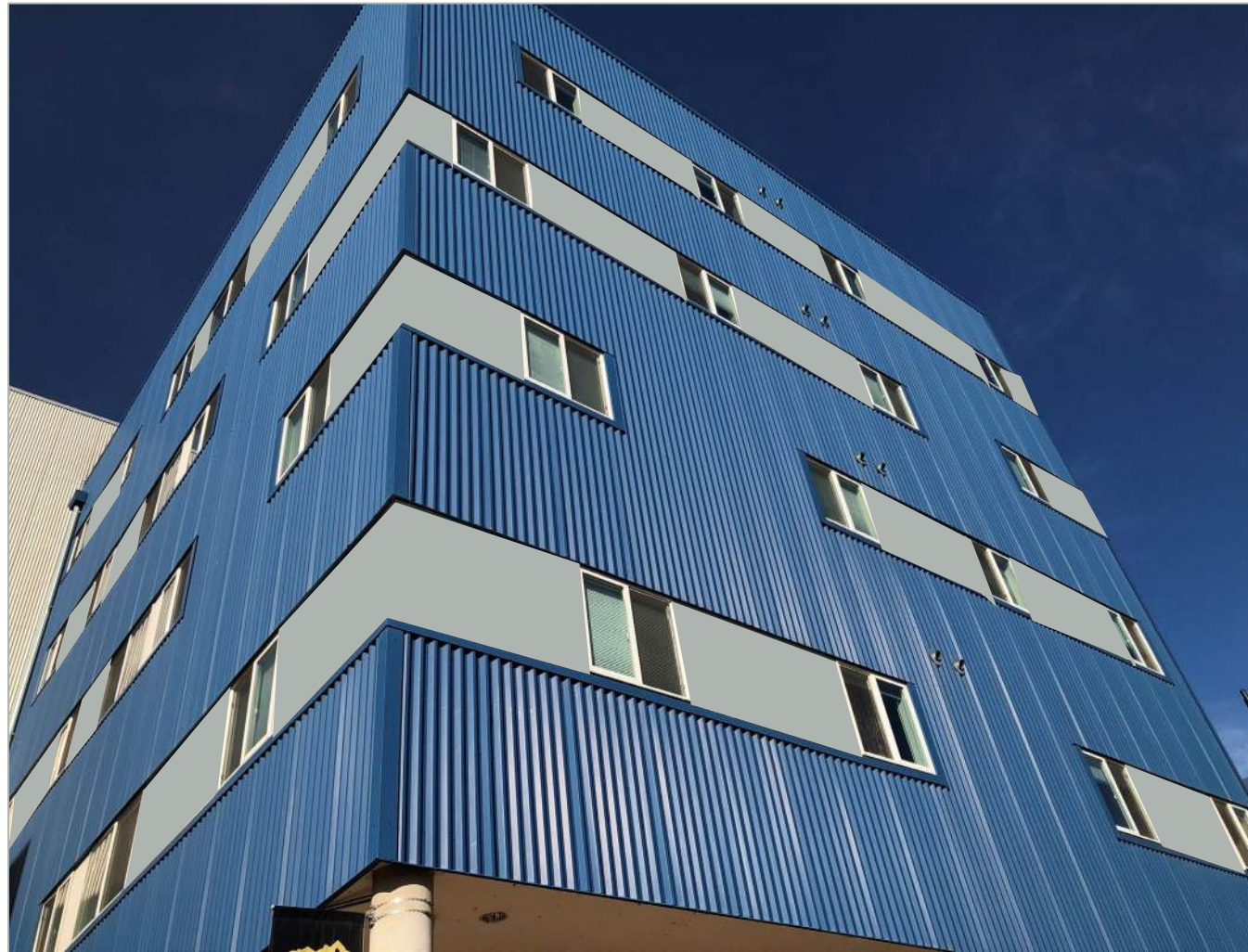
BLUE METAL PANEL ELEVATIONS – NORTH, WEST & EAST ELEVATIONS  
CHARCOAL GRAY OPTION





# CEMENT BOARD REPLACEMENT

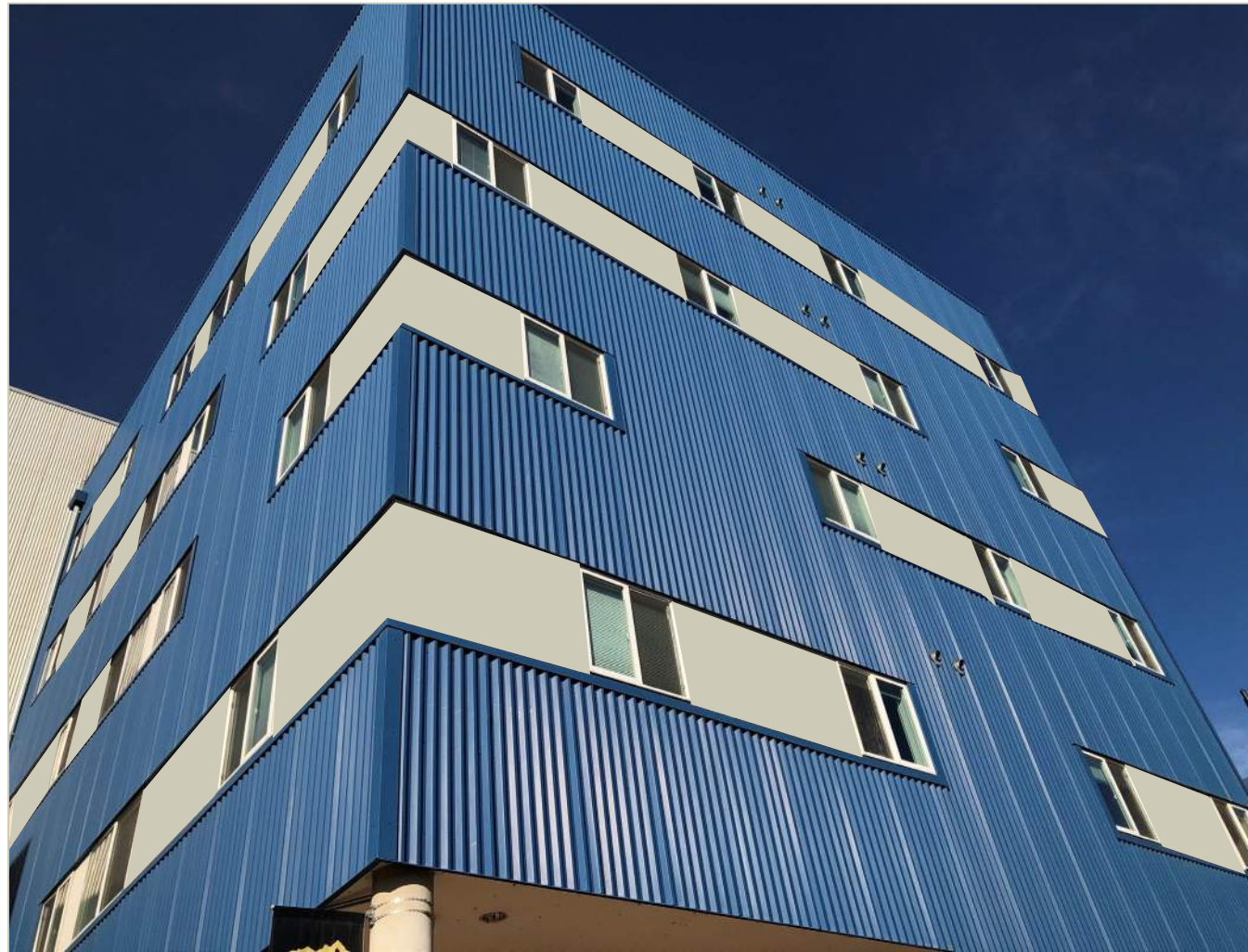
BLUE METAL PANEL ELEVATIONS – NORTH, WEST & EAST ELEVATIONS  
DOVE GRAY OPTION





# CEMENT BOARD REPLACEMENT

BLUE METAL PANEL ELEVATIONS – NORTH, WEST & EAST ELEVATIONS  
SANDSTONE OPTION





# CEMENT BOARD REPLACEMENT

BLUE METAL PANEL ELEVATIONS – NORTH, WEST & EAST ELEVATIONS  
BONE WHITE OPTION





# CEMENT BOARD REPLACEMENT

BRICK & CORRUGATED METAL PANEL ELEVATIONS –WEST, SOUTH & EAST ELEVATIONS  
CHARCOAL GRAY OPTION





# CEMENT BOARD REPLACEMENT

BRICK & CORRUGATED METAL PANEL ELEVATIONS –WEST, SOUTH & EAST ELEVATIONS  
BONE WHITE OPTION



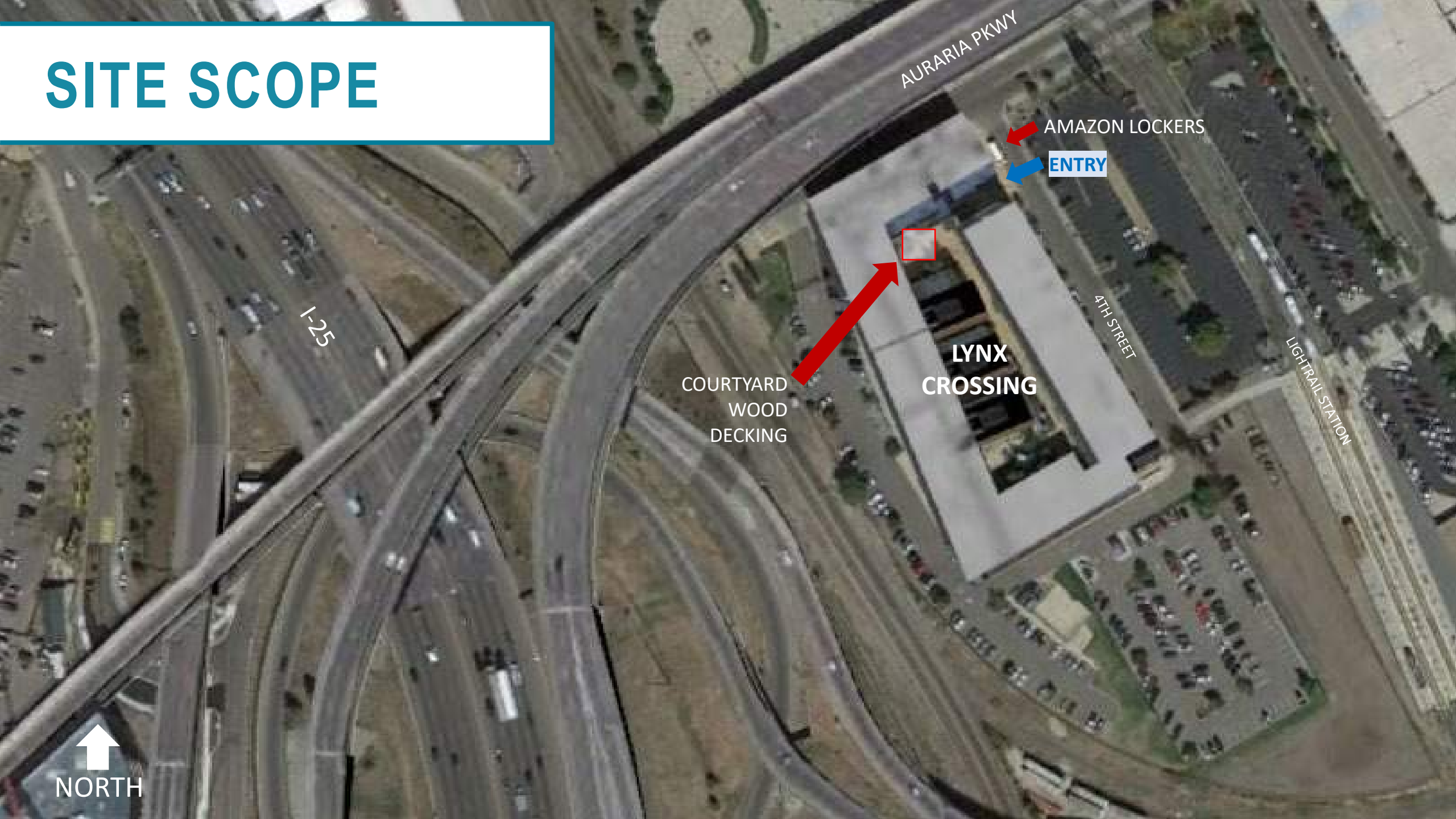




# SITE SCOPE



# SITE SCOPE



AURARIA PKWY

AMAZON LOCKERS

ENTRY

I-25

COURTYARD  
WOOD  
DECKING

LYNX  
CROSSING

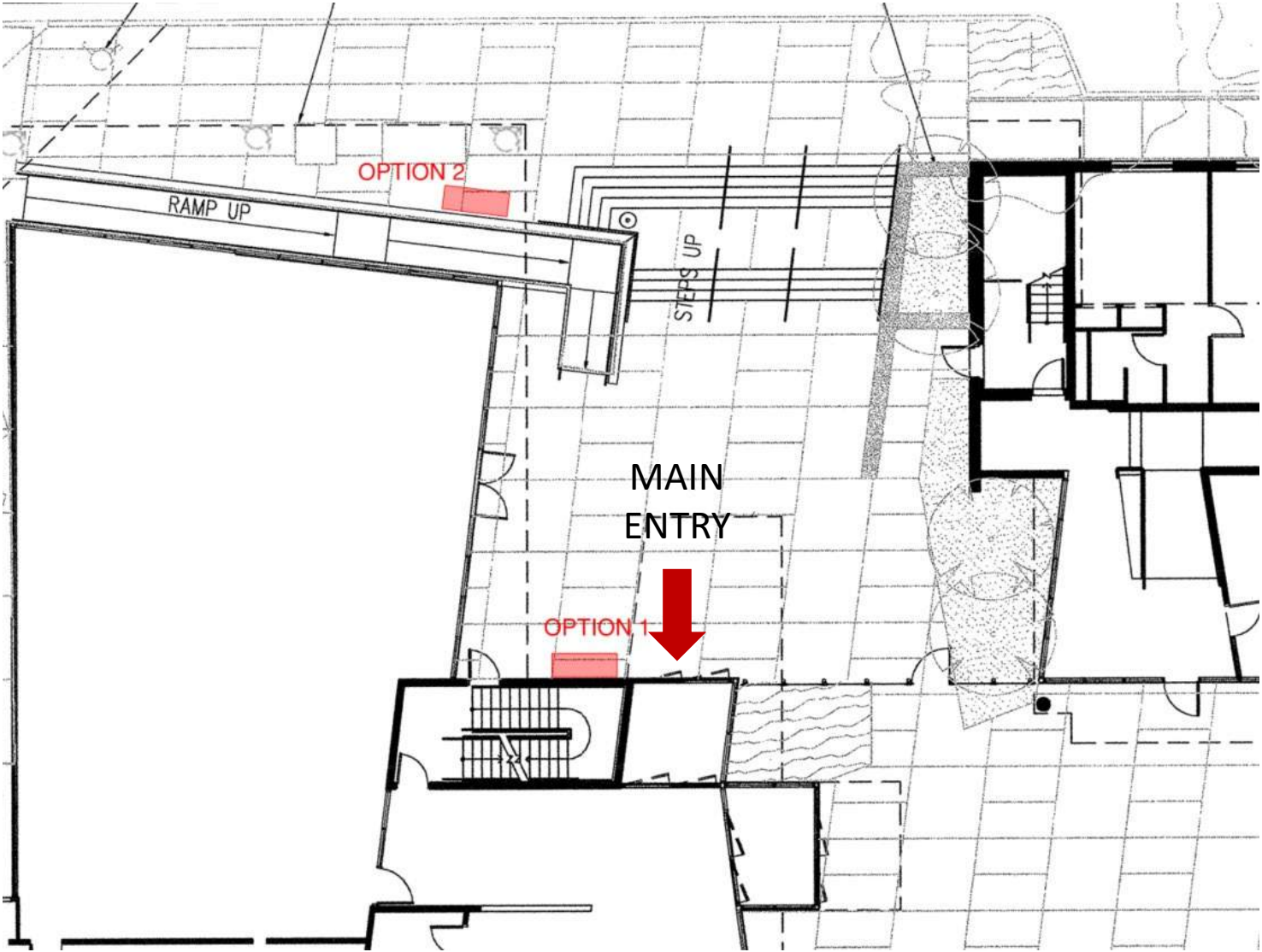
4TH STREET

LIGHTRAIL STATION

↑  
NORTH



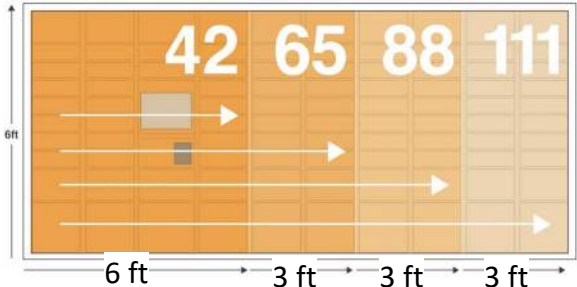
# AMAZON LOCKER LOCATION OPTIONS



Location outside of secured building area



Amazon Locker Sizes





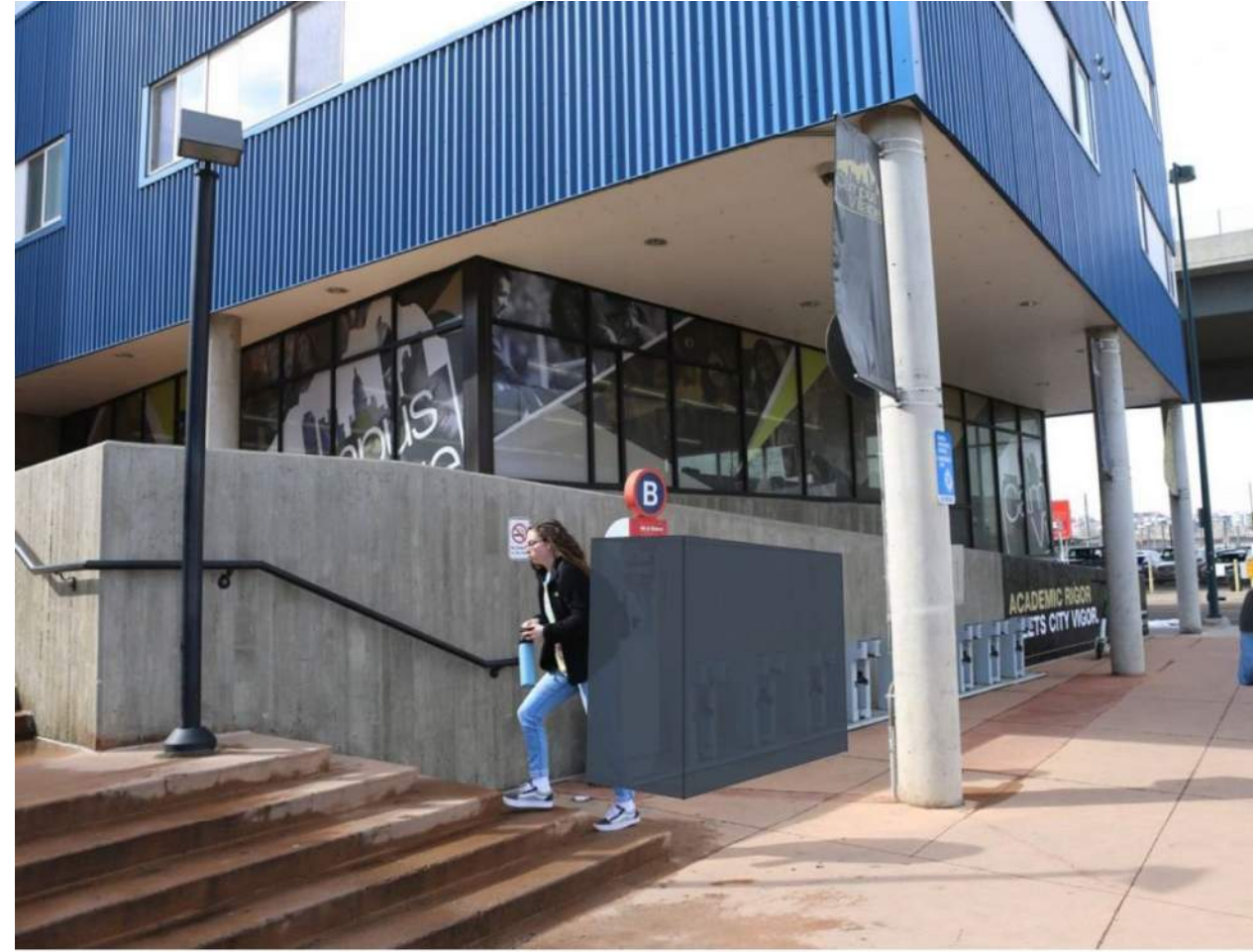
# AMAZON LOCKER LOCATION

OPTION 1 – Adjacent to Main Entry





A photograph of a modern, multi-story building with a blue and white facade. The building features large windows and a prominent entrance with stairs. A small tree is in the foreground, and a sign on the right side of the building reads "ACADEMIC MEETS CITY".

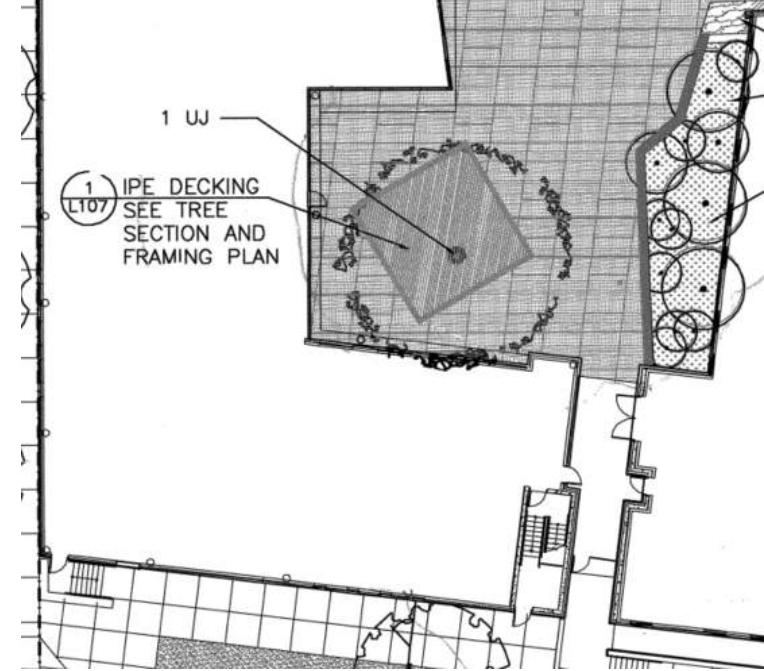




# COURTYARD DECKING



Replace wood decking – Contrasting Color Concrete or Trex - TBD



Record Document Plan



UJ-1 Tree - Accolade Elm



# COURTYARD CANOPY



Alternate Scope: Replace weathered wood trim and Trespa panels at courtyard canopy – Replace with Metal Wall Panels

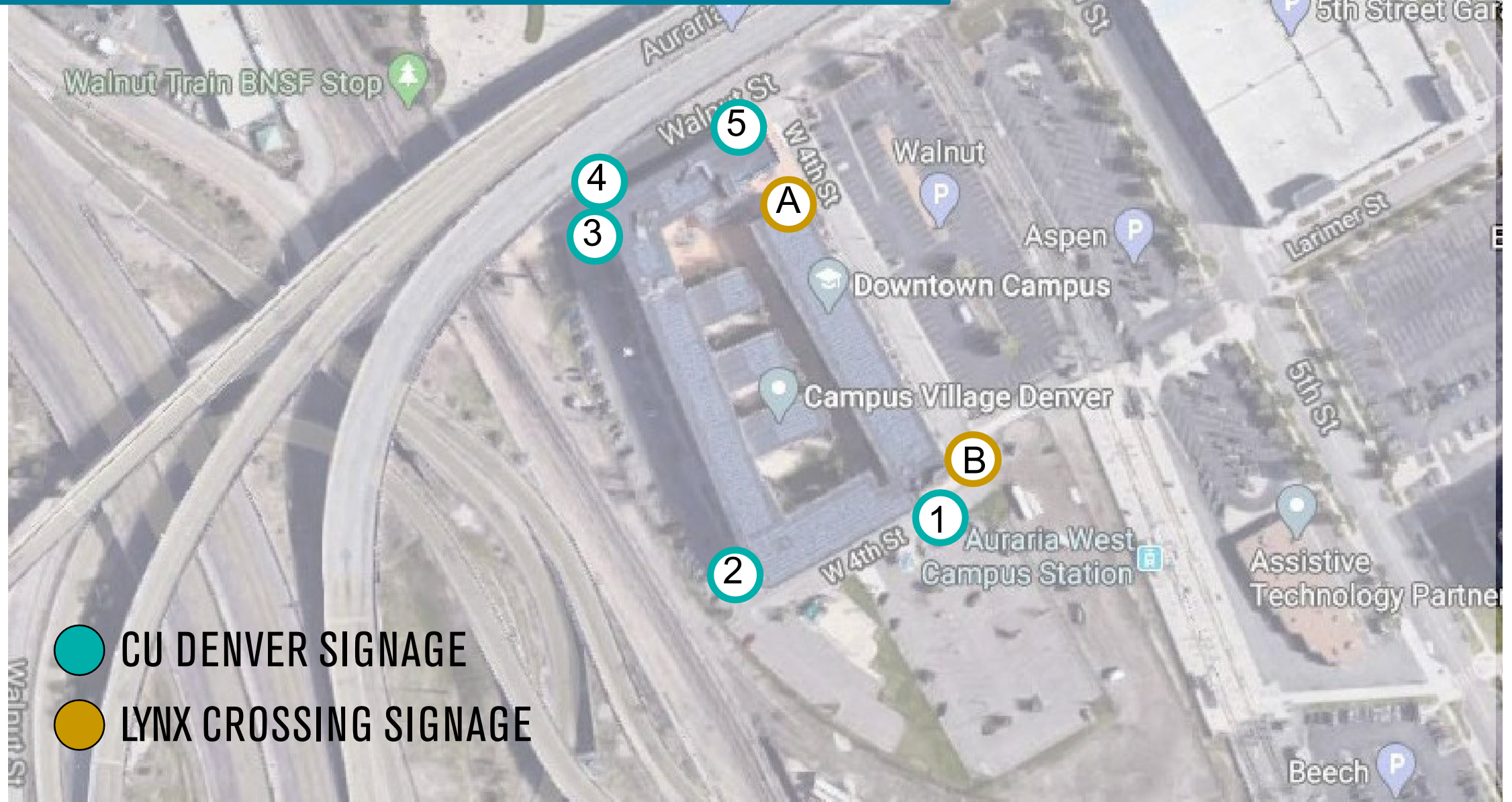




SIGNAGE SCOPE



# SIGNAGE LOCATION OPTIONS





# CU Denver LOGO OPTIONS

OPTION 01



Denver

OPTION 02



University of Colorado **Denver**



# ① **CU DENVER SIGN** (South Elevation / East Corner)

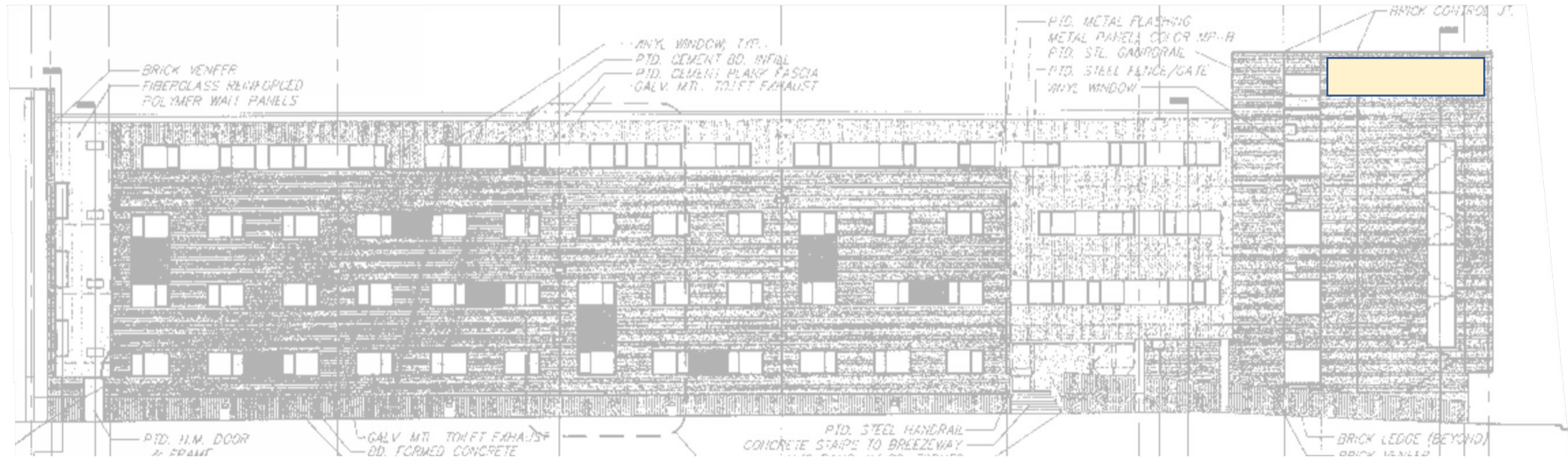
(View from Colfax)





# ① CU DENVER SIGN (South Elevation / East Corner)

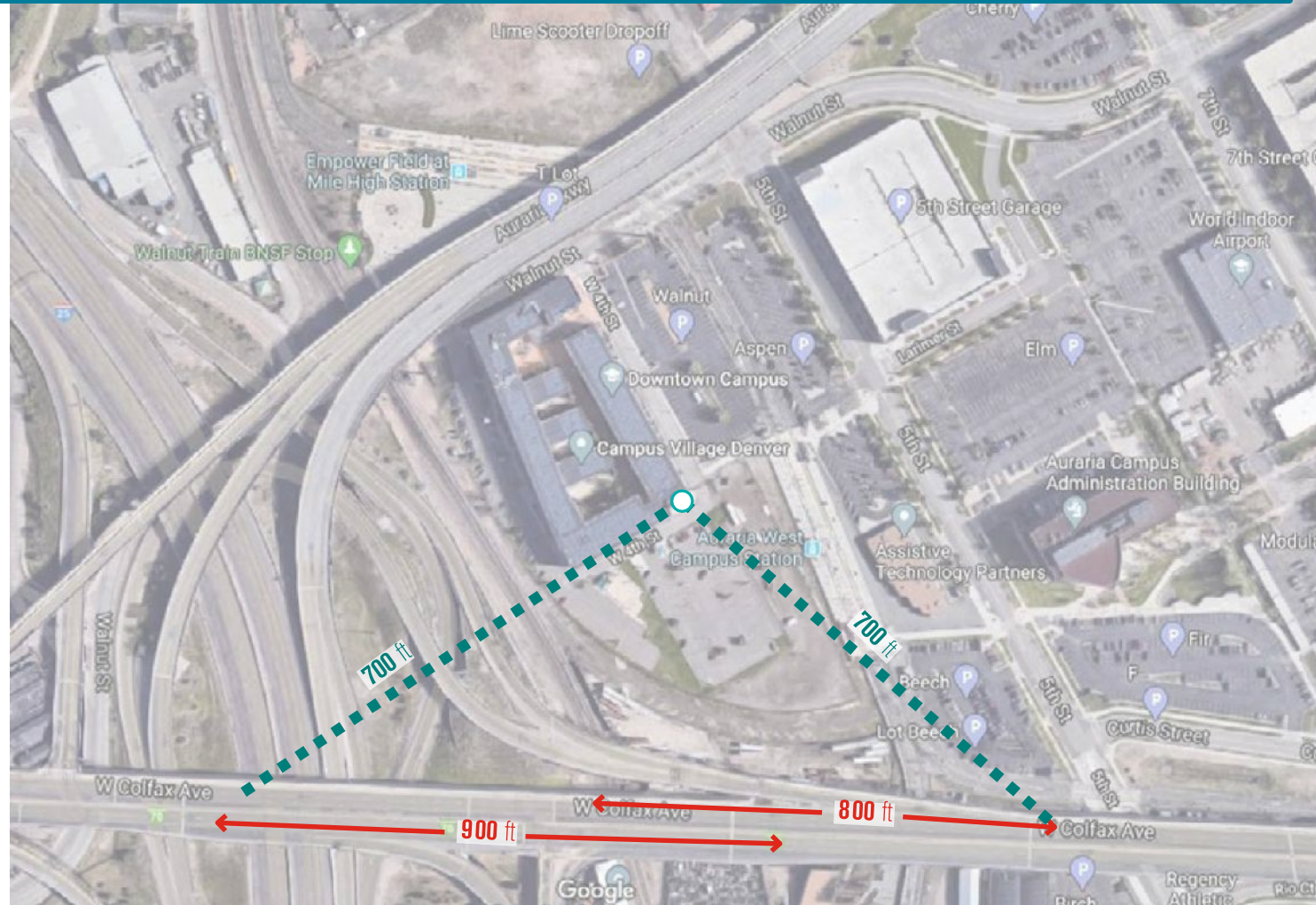
(View from Colfax and I-25)



① South Elevation



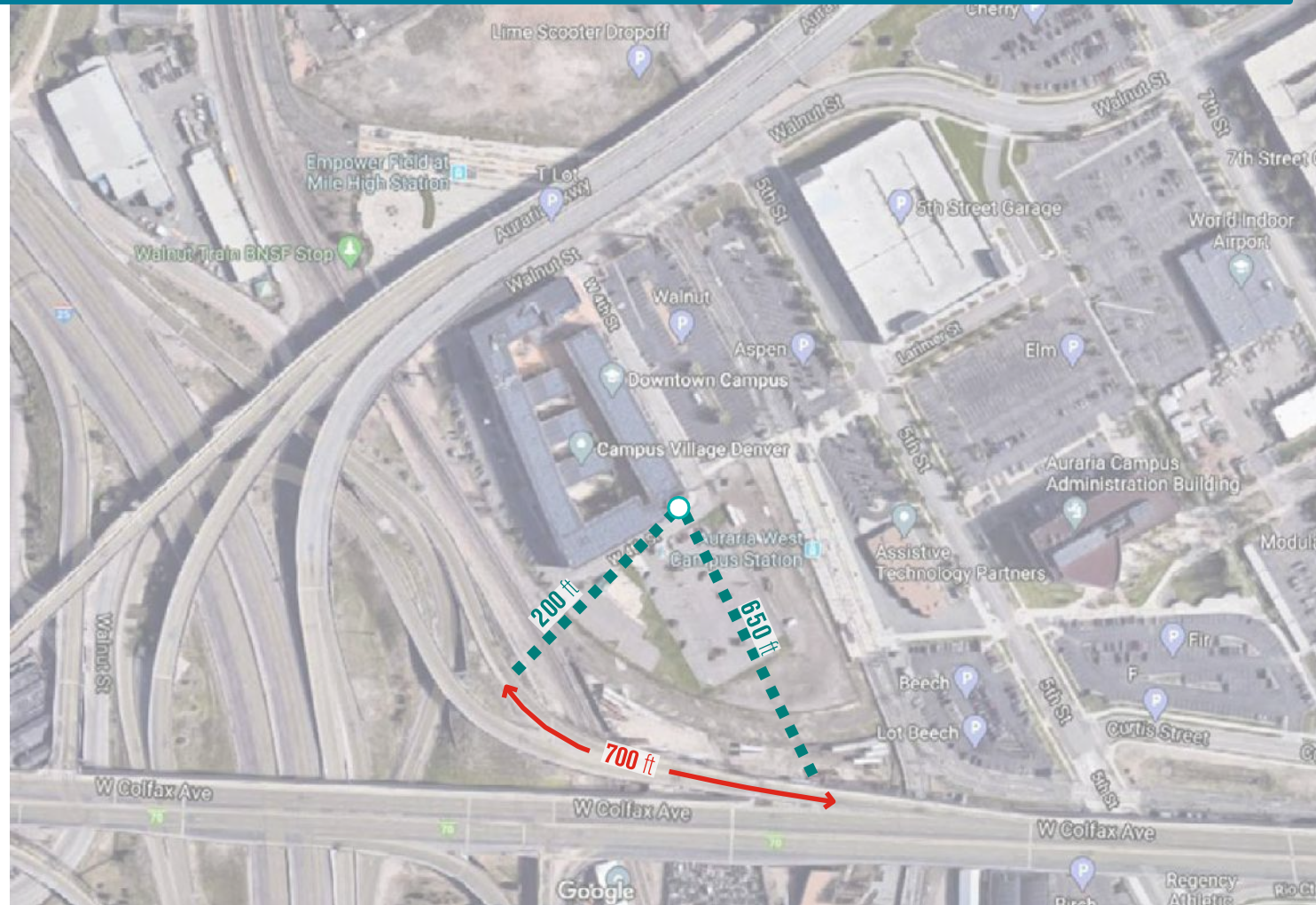
# ① COLFAX AVENUE



LENGTH OF TIME SIGNAGE IS VISIBLE FOR **13.7-15.4 SECONDS**  
SIGNAGE HEIGHT VISIBILITY = **5+ FT**



# ① I-25 OFF-RAMP



LENGTH OF TIME SIGNAGE IS VISIBLE FOR **119 SECONDS**  
SIGNAGE HEIGHT VISIBILITY = **2-5+ FT**



## ② **CU DENVER SIGN** (West Elevation / South Corner)

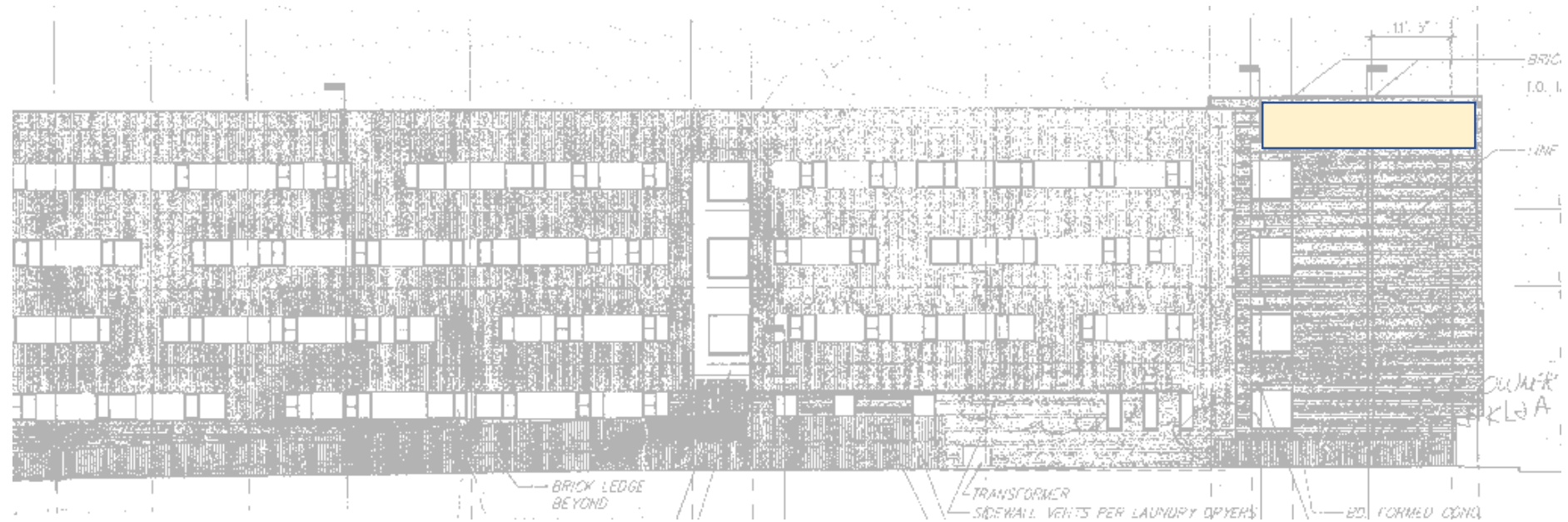
(View from I-25 and Auraria Parkway)





## ② CU DENVER SIGN (West Elevation / South Corner)

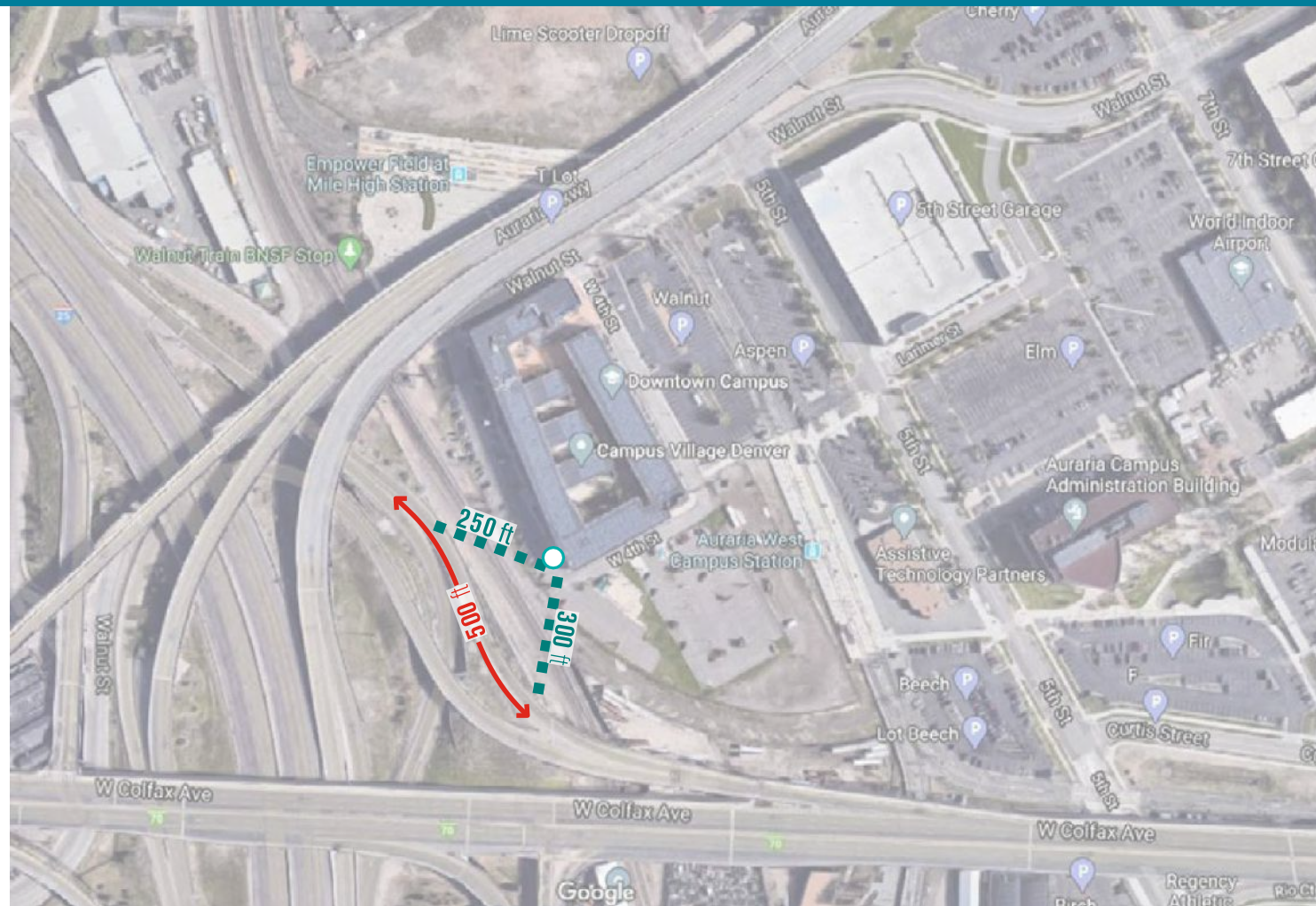
(View from I-25 and Auraria Parkway)



1 West Elevation



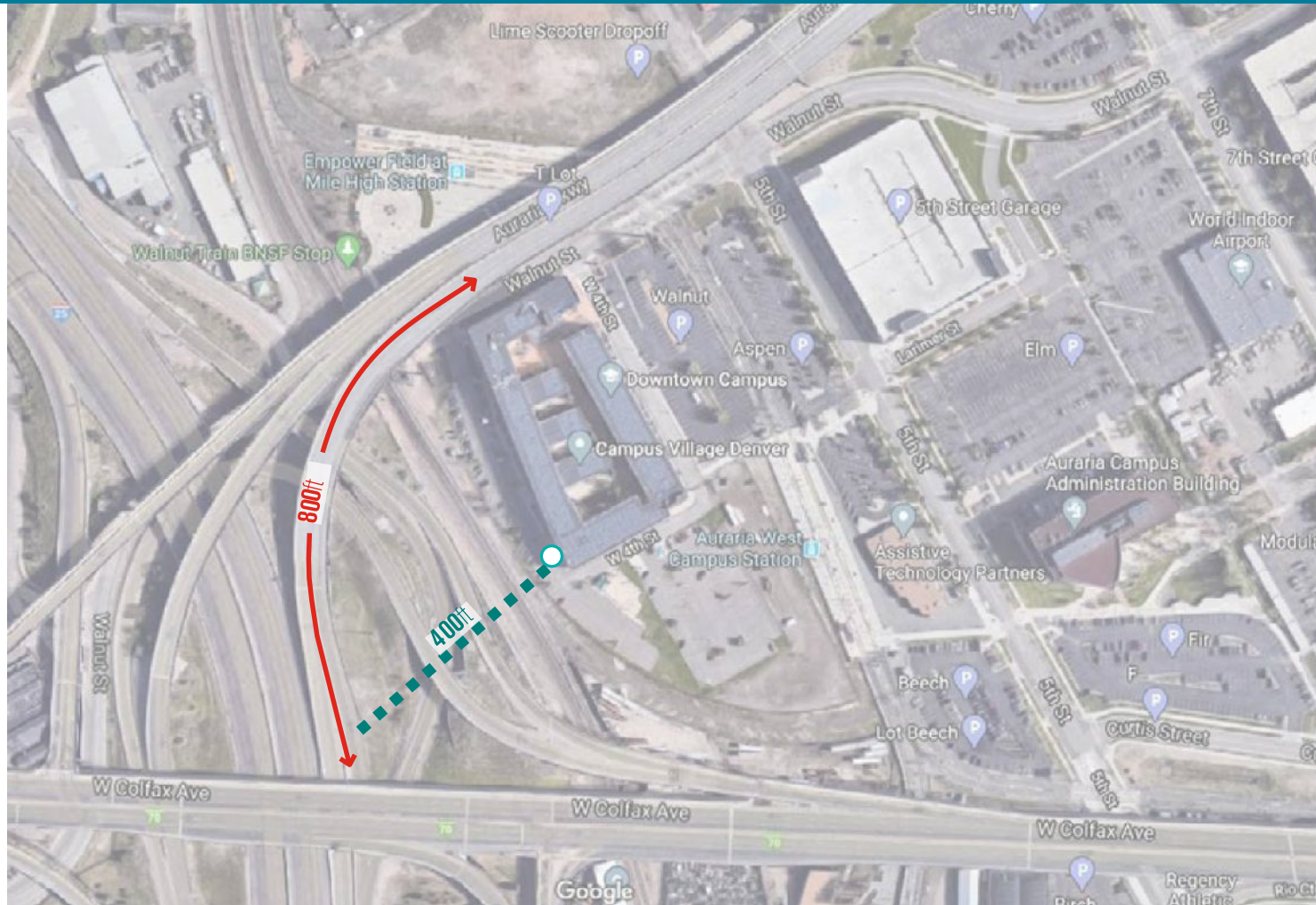
## ② I-25 ON-RAMP FROM COLFAX



LENGTH OF TIME SIGNAGE IS VISIBLE FOR **8.5 SECONDS**  
SIGNAGE HEIGHT VISIBILITY = **2-2.5 FT**



## ② AURARIA PARKWAY ON-RAMP



LENGTH OF TIME SIGNAGE IS VISIBLE FOR **13.7 SECONDS**  
SIGNAGE HEIGHT VISIBILITY = **3 FT**



# ③ **CU DENVER SIGN** (West Elevation / North Corner)

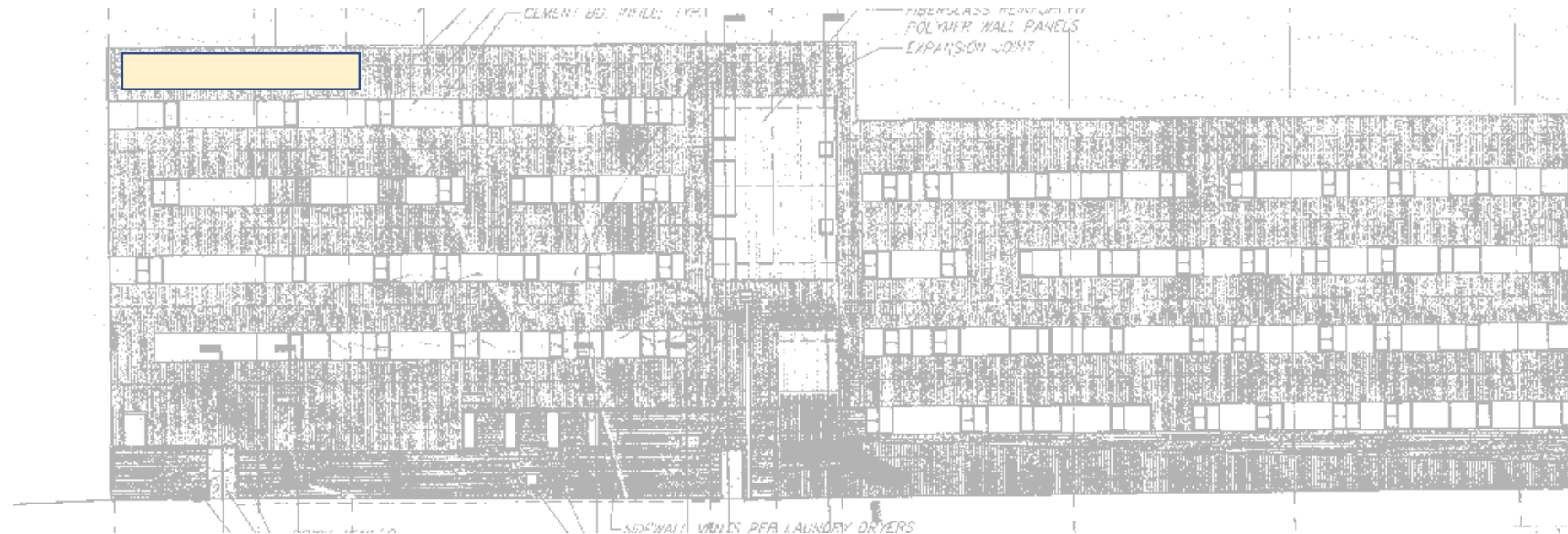
(View from I-25 Off Ramp to Auraria Parkway)





# ③ CU DENVER SIGN (West Elevation / North Corner)

(View from I-25 Off Ramp to AURARIA Pkwy)



① West Elevation



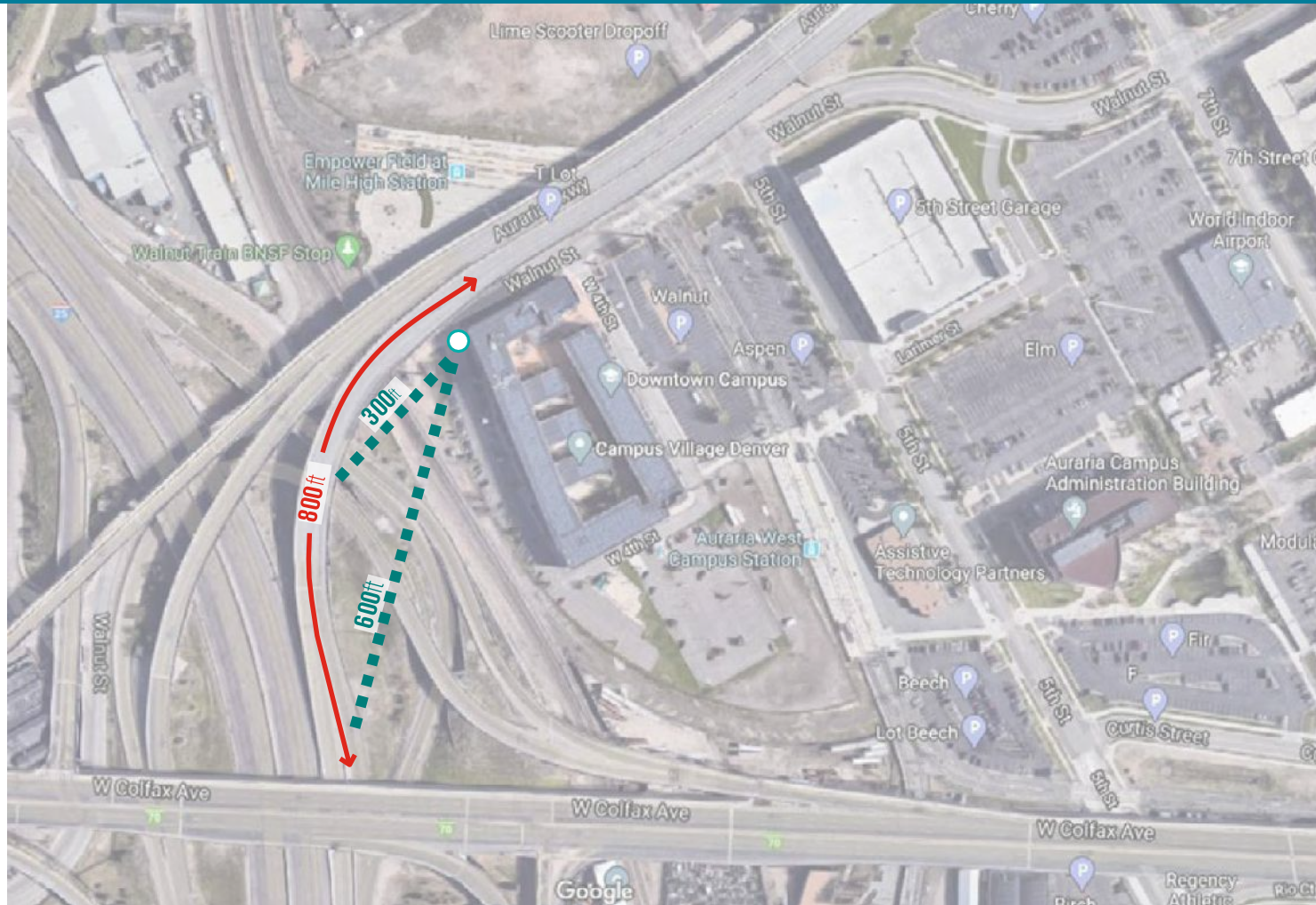
# ③ I-25 ON-RAMP FROM COLFAX



LENGTH OF TIME SIGNAGE IS VISIBLE FOR **8.5 SECONDS**  
SIGNAGE HEIGHT VISIBILITY = **1.5-5 FT**



# ③ AURARIA PARKWAY ON-RAMP



LENGTH OF TIME SIGNAGE IS VISIBLE FOR **13.7 SECONDS**  
SIGNAGE HEIGHT VISIBILITY = **2.5-5 FT**



# ④ **CU DENVER SIGN** (North Elevation / West Corner)

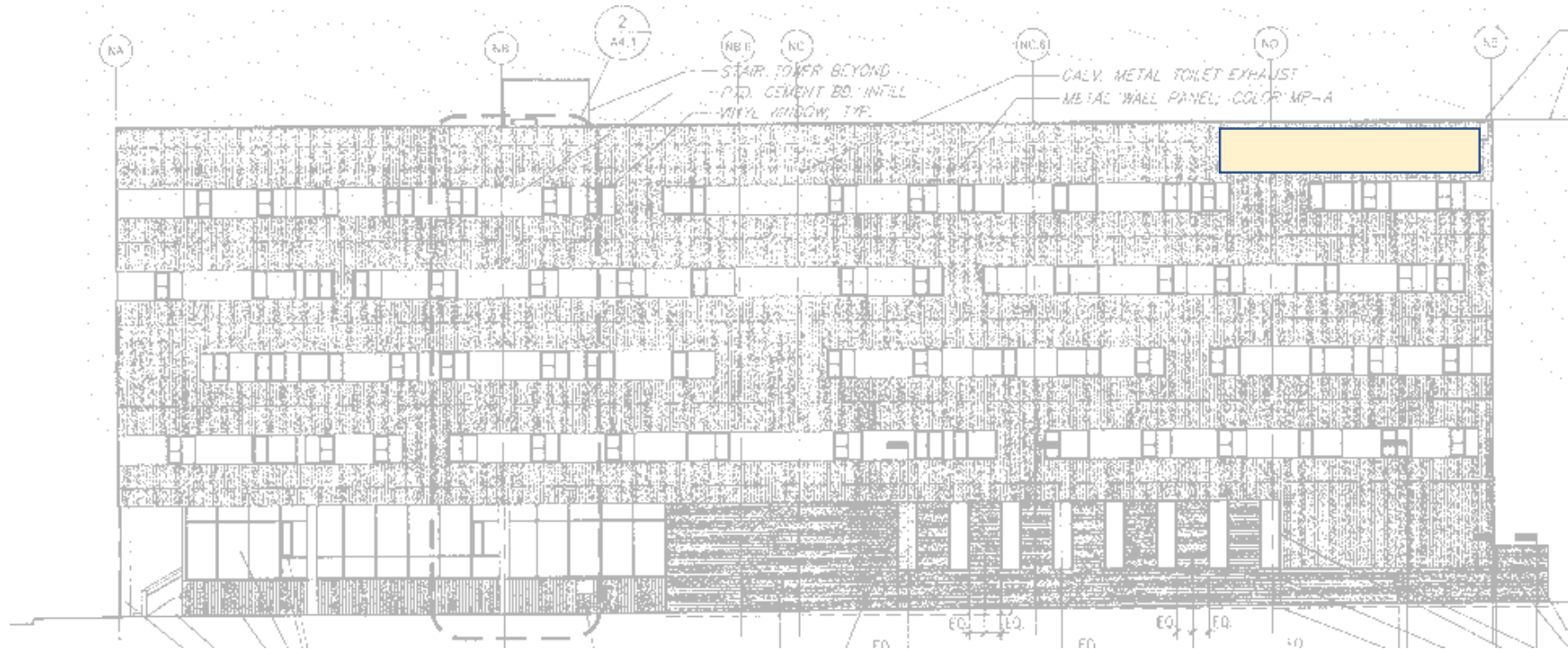
(View from Auraria Parkway)





# 4 CU DENVER SIGN (North Elevation / West Corner)

(View from Auraria Parkway)



1 North Elevation



## ④ AURARIA PARKWAY

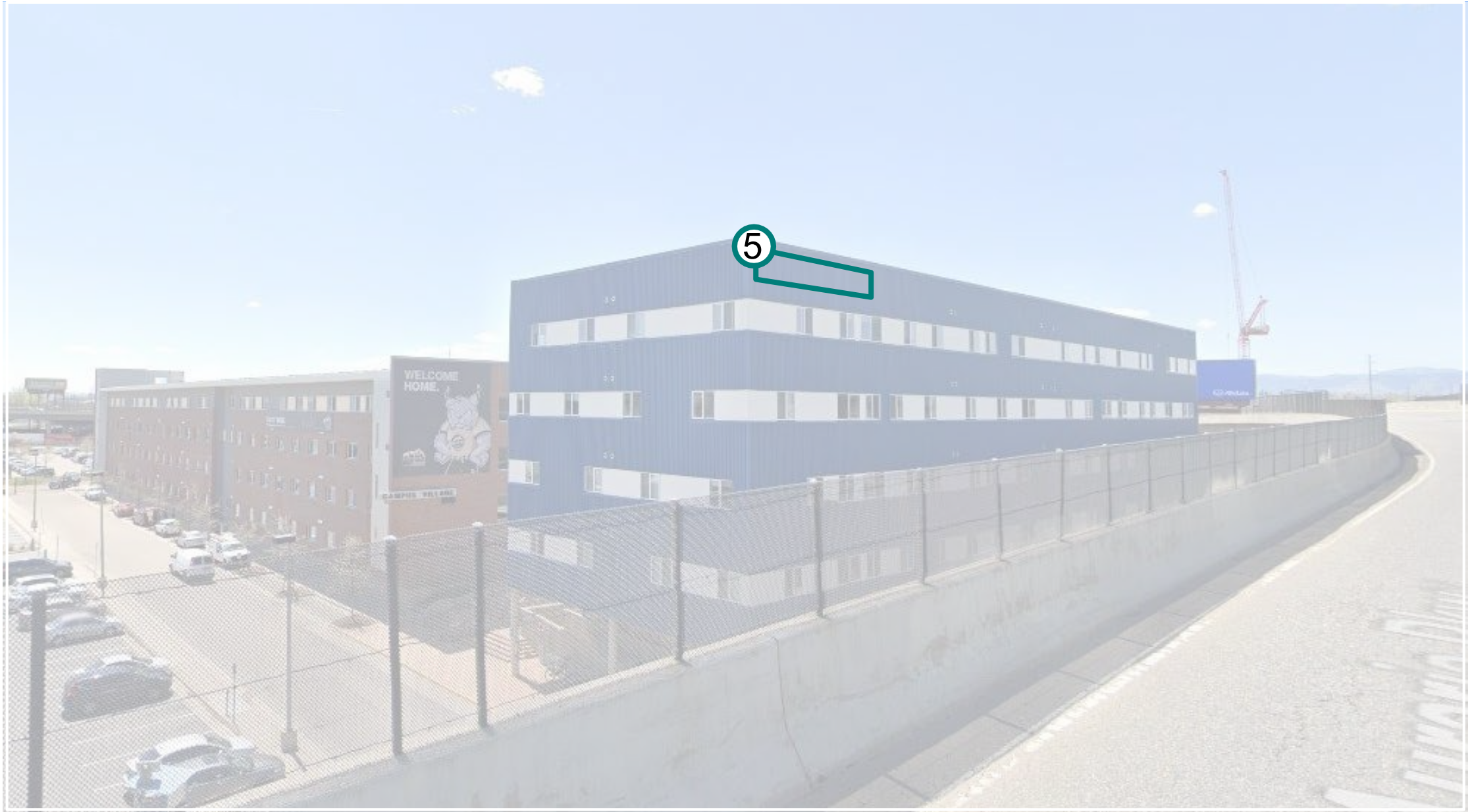


LENGTH OF TIME SIGNAGE IS VISIBLE FOR **3.4-8.5 SECONDS**  
SIGNAGE HEIGHT VISIBILITY = **1-4 FT**



# ⑤ **CU DENVER SIGN** (North Elevation / East Corner)

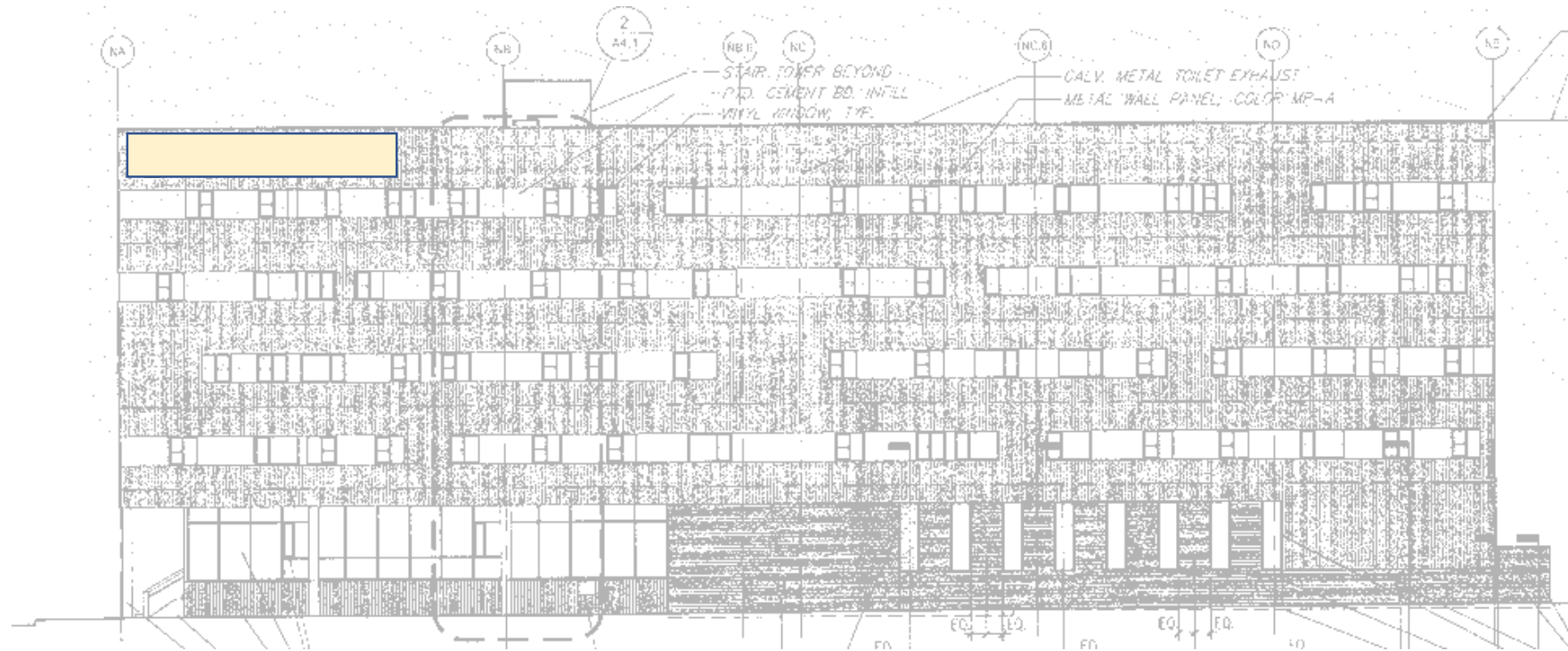
(View from Auraria Parkway)





# 5 CU DENVER SIGN (North Elevation / East Corner)

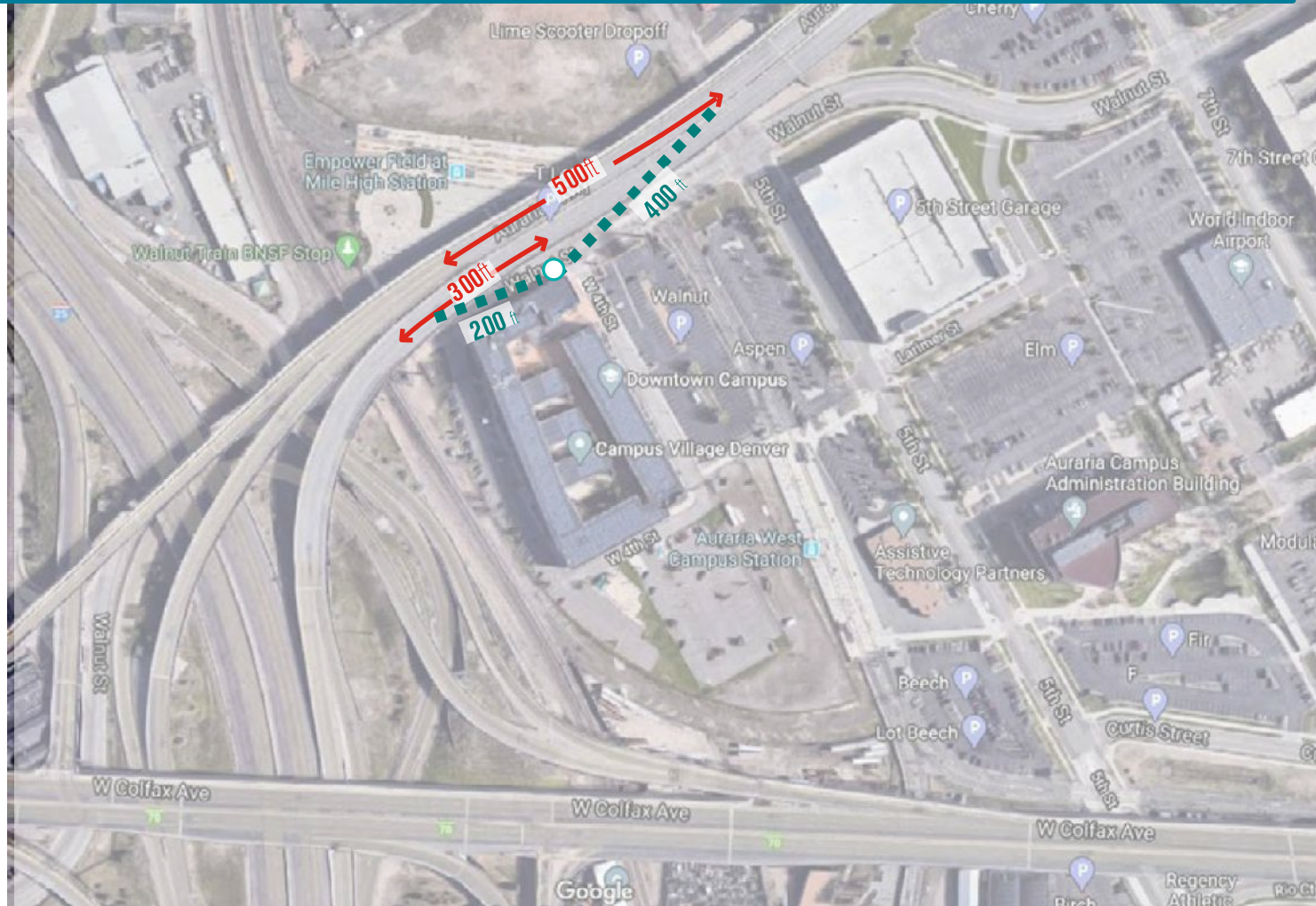
(View from Auraria Parkway)



1 North Elevation



## 5 AURARIA PARKWAY

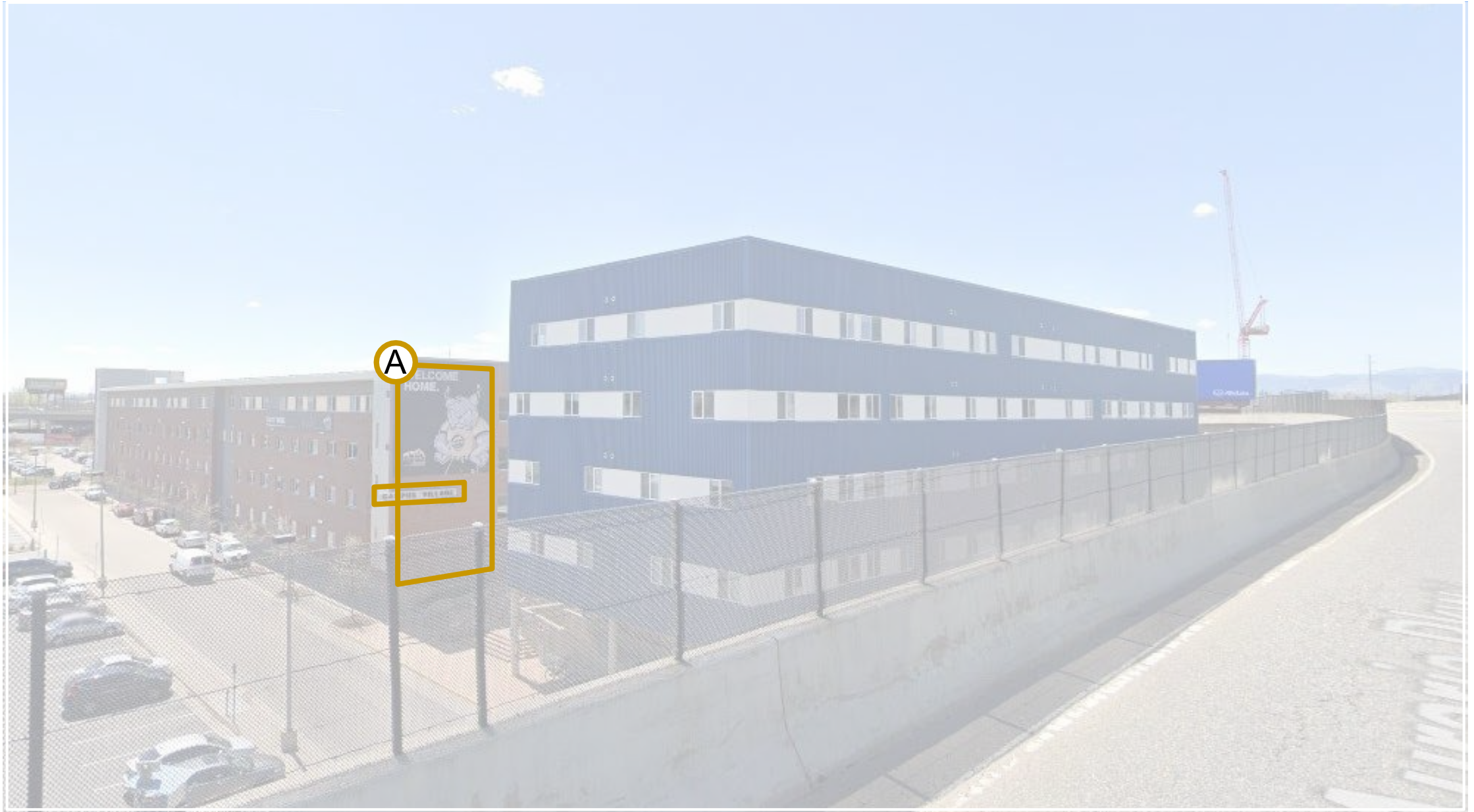


LENGTH OF TIME SIGNAGE IS VISIBLE FOR **5-8.5 SECONDS**  
SIGNAGE HEIGHT VISIBILITY = **1.5-3 FT**



# **A** **LYNX CROSSING SIGN** (North Elevation at Main Entry)

(View from Auraria Parkway driving South)



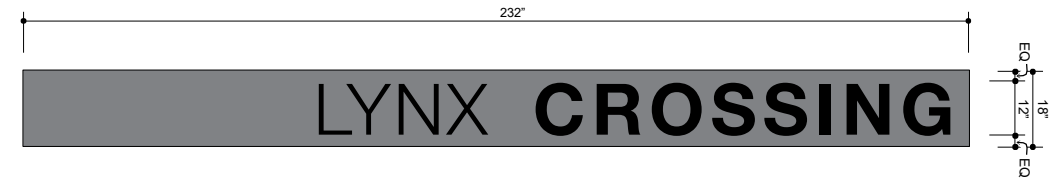


# A LYNX CROSSING SIGN (North Elevation at Main Entry)

(View Entry)



1 North Elevation - East Wing  
Scale: 1/8"=1'-0"



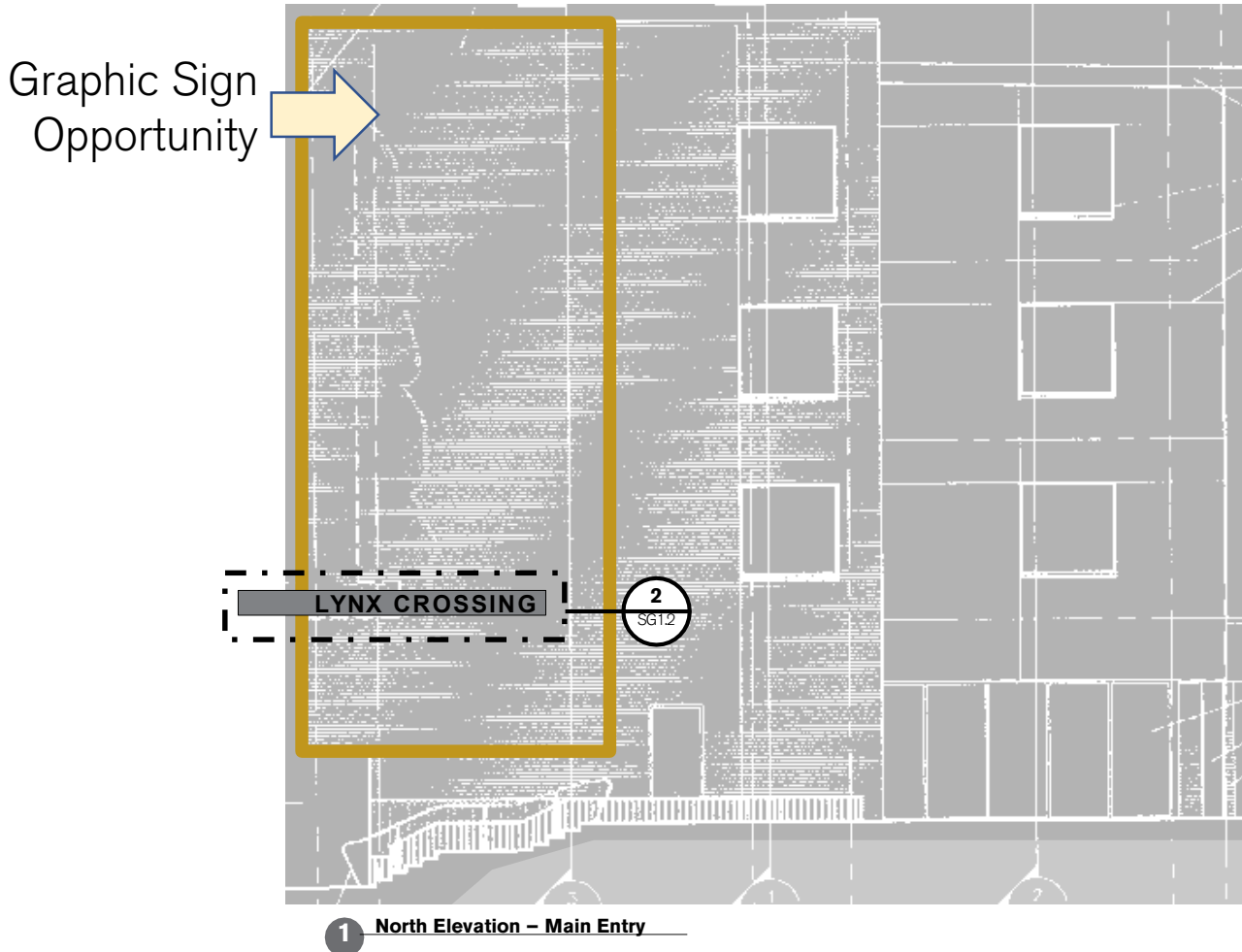
2 Lynx Crossing Signage  
Scale: 3/8"=1'-0"



# A LYNX CROSSING SIGN – Horizontal Option

(Existing Sign Location - North Elevation at Main Entry)

Pedestrian & Vehicular View approaching from Walnut Street



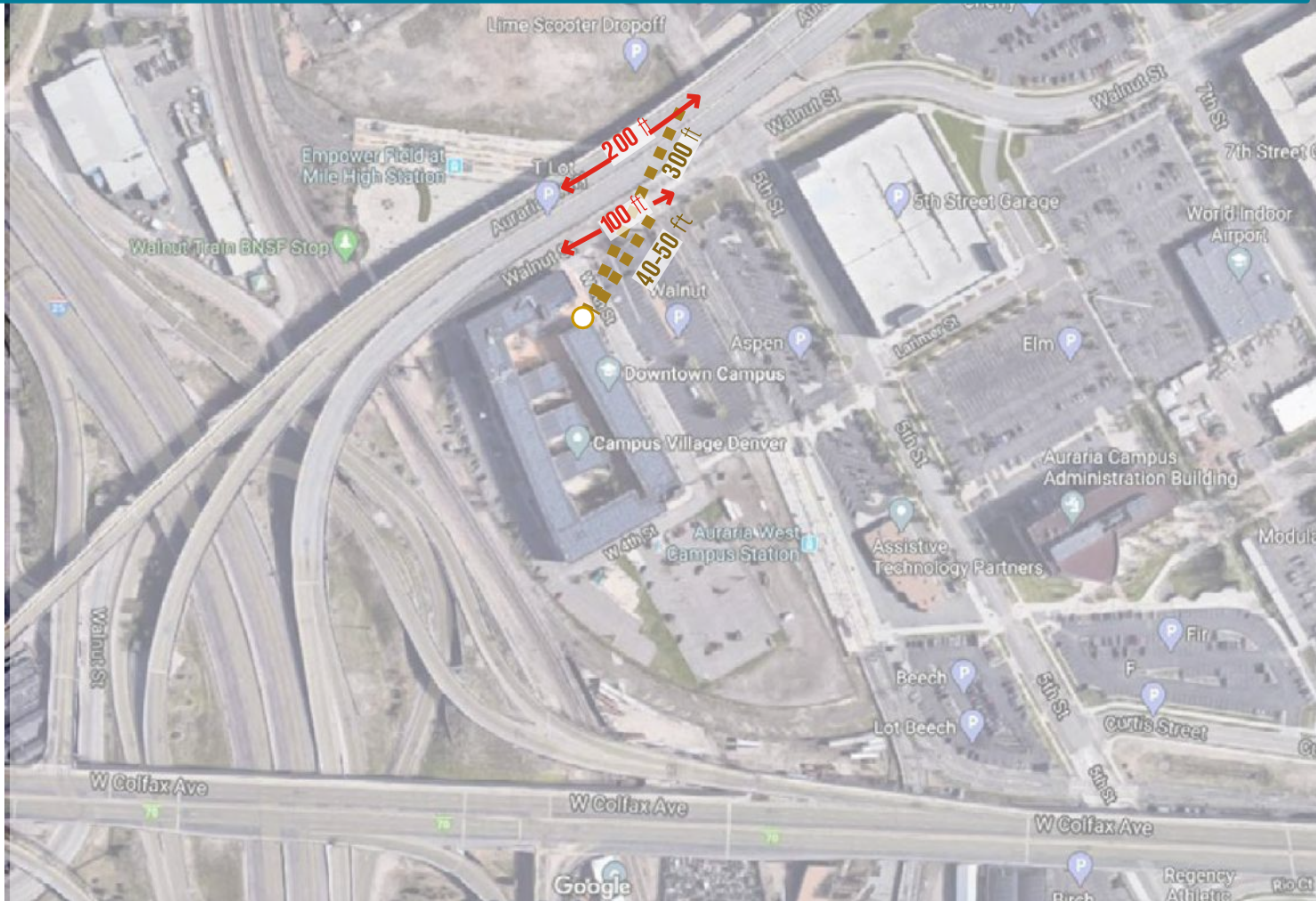
Existing Metal Bar with New Dimensional Letters



2 Lynx Crossing Signage  
Scale: 3/8"=1'-0"



# A AURARIA PKWY|WALNUT ST



LENGTH OF TIME SIGNAGE IS VISIBLE FOR **3.5 SECONDS**  
SIGNAGE HEIGHT VISIBILITY = **1-1.5 FT**



# **(B) LYNX CROSSING SIGN – Vertical Option**

(New Location at East Elevation / South Corner)

Pedestrian & Vehicular View from 5<sup>th</sup> Street & Larimer Street Approach from Campus

Graphic  
Sign  
Opportunity



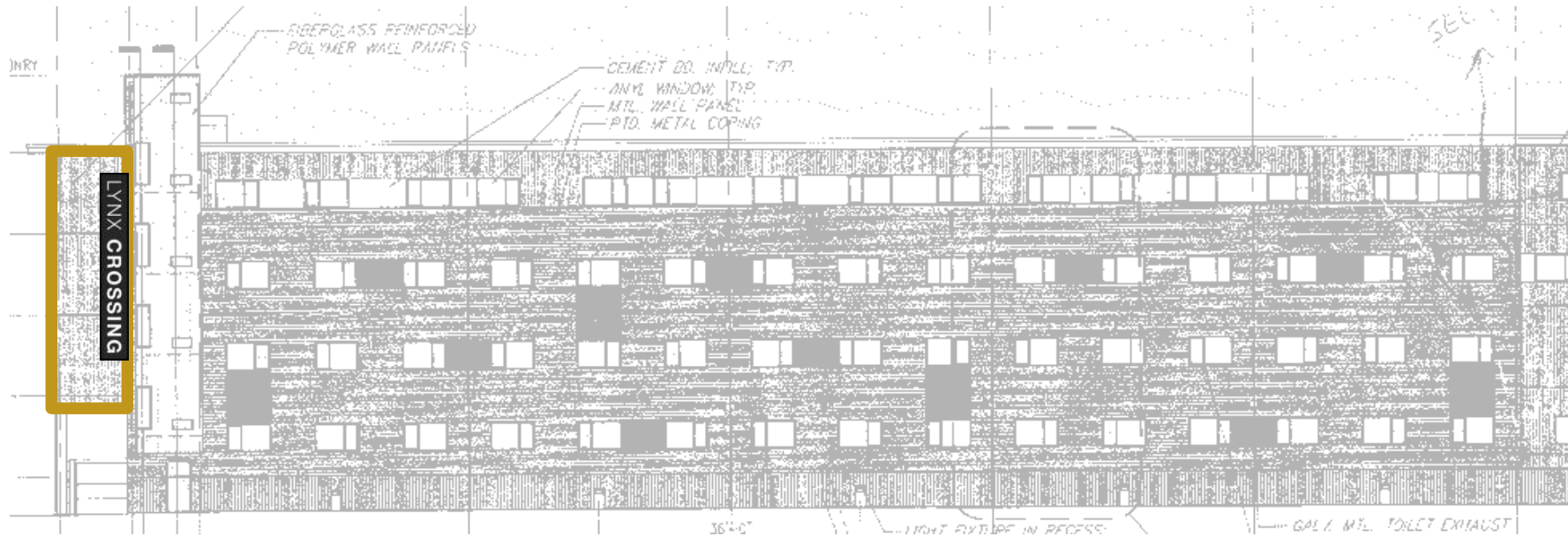
To Auraria Campus:  
→ Metro State Admissions  
→ Tivoli-Campus Bookstore  
→ King Center

CAMPUS ACCESSIBLE SHUTTLE & NIGHTRIDER STOP  
24  
15 MIN

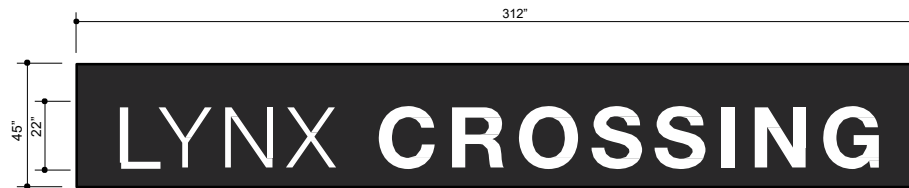


# B LYNX CROSSING SIGN – Vertical Option

(New Location at East Elevation / South Corner)



1 East Elevation



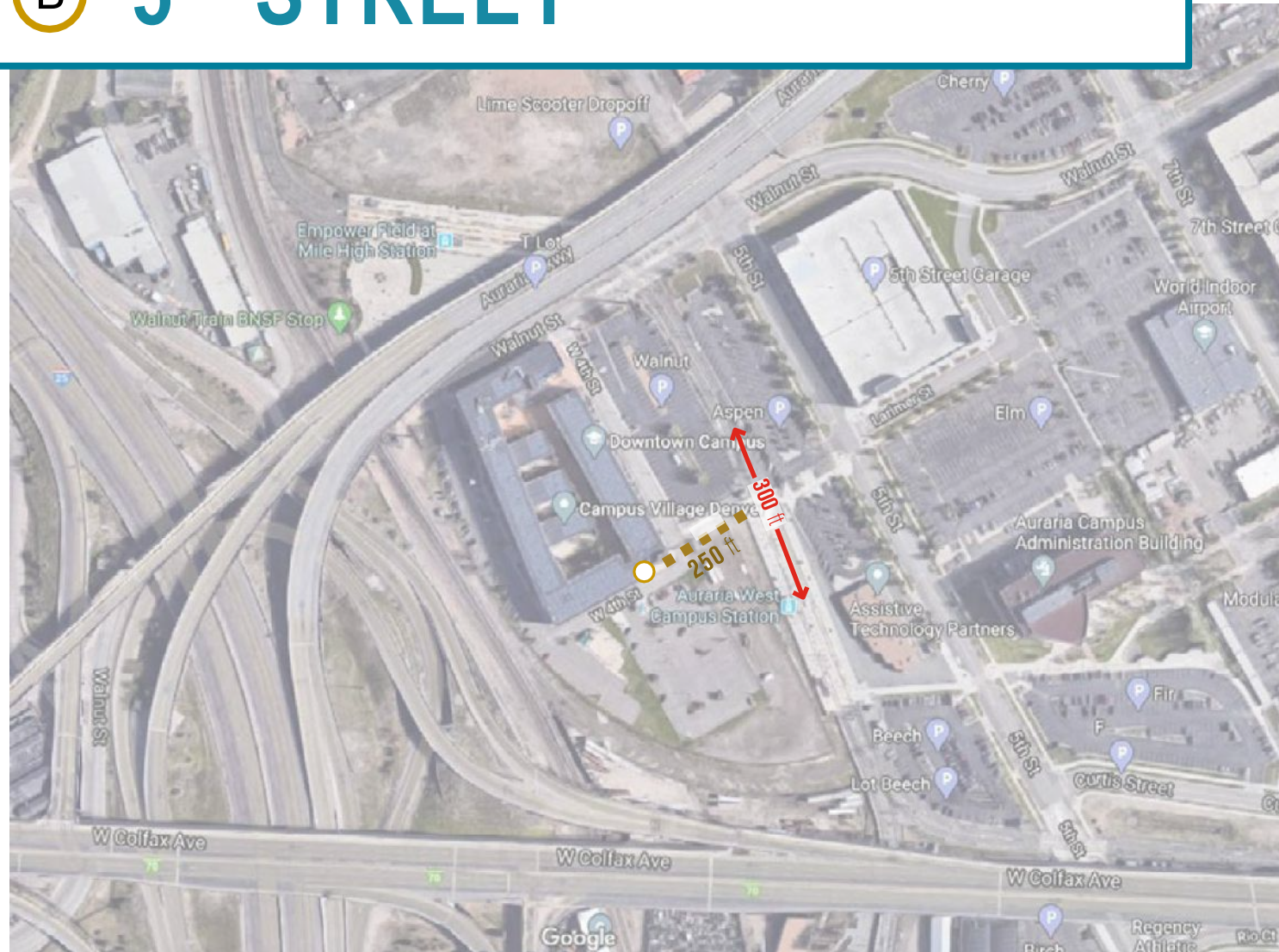
Sign Font, Design and Materials TBD

2 Lynx Crossing Signage

Scale: 1/4" = 1'-0"



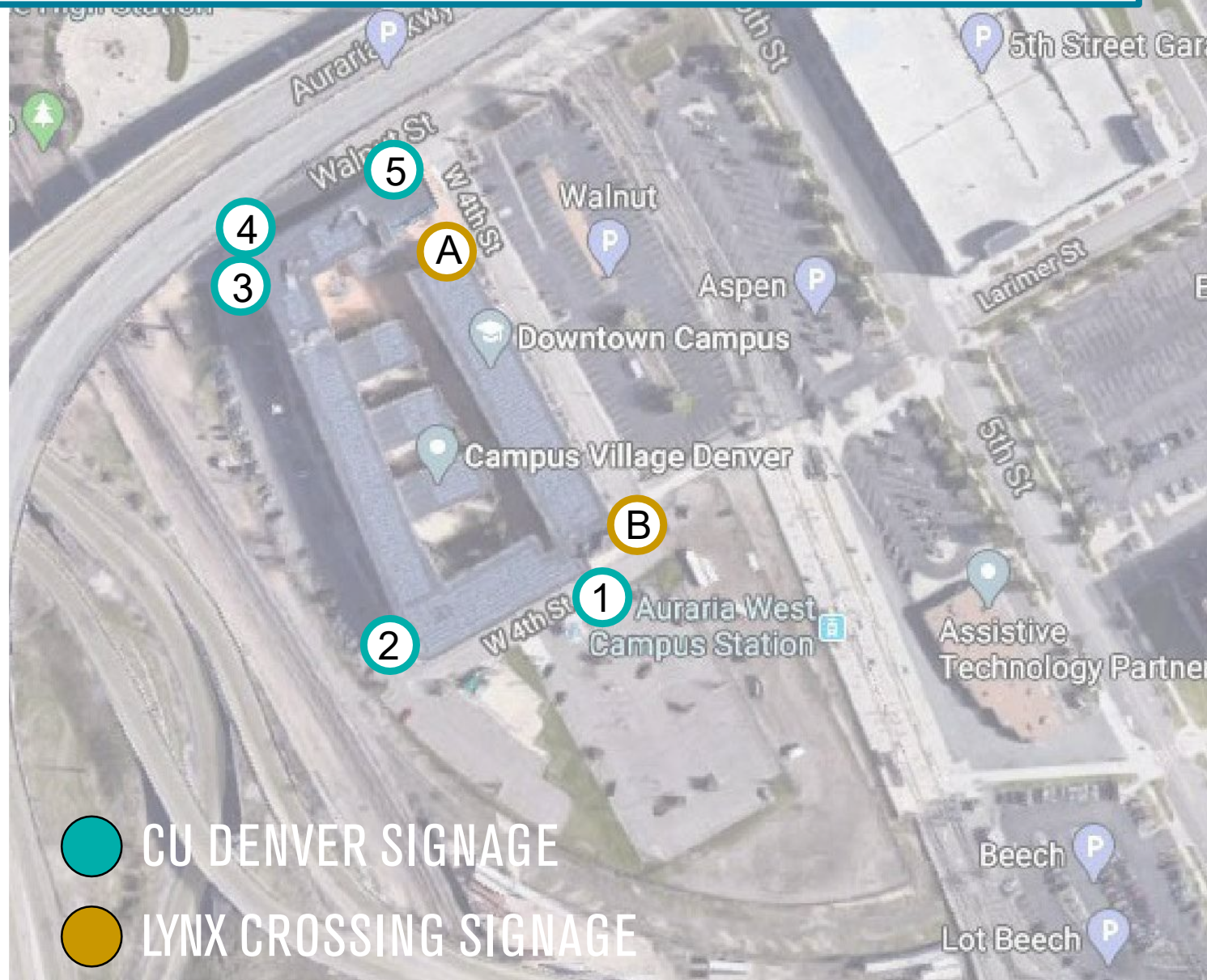
## B 5<sup>th</sup> STREET



LENGTH OF TIME SIGNAGE IS VISIBLE FOR **3 SECONDS**  
SIGNAGE HEIGHT VISIBILITY = **2 FT**



# SIGNAGE LOCATION OPTIONS



- CU DENVER SIGNAGE
- LYNX CROSSING SIGNAGE

## CU DENVER SIGNAGE

- ① South Elevation / East Corner  
11.9-15.4 SECONDS  
5+ FT
- ② West Elevation / South Corner  
8.5-13.7 SECONDS  
2-3 FT
- ③ West Elevation / North Corner  
8.5-13.7 SECONDS  
1.5-5 FT
- ④ North Elevation / West Corner  
3.4-8.5 SECONDS  
1-4 FT
- ⑤ North Elevation / East Corner  
5-8.5 SECONDS  
1.5-3 FT

## LYNX CROSSING SIGNAGE

- ① North Elevation / Main Entry  
3.5 SECONDS (Driving) / 37.5 SECONDS (Walking) 1-1.5 FT
- ② East Elevation / South Corner  
3 SECONDS (Driving) / 62.5 SECONDS (Walking) 2 FT

# **QUESTIONS AND DISCUSSION**