

WILLIAM J. HYBL SPORTS MEDICINE AND PERFORMANCE CENTER

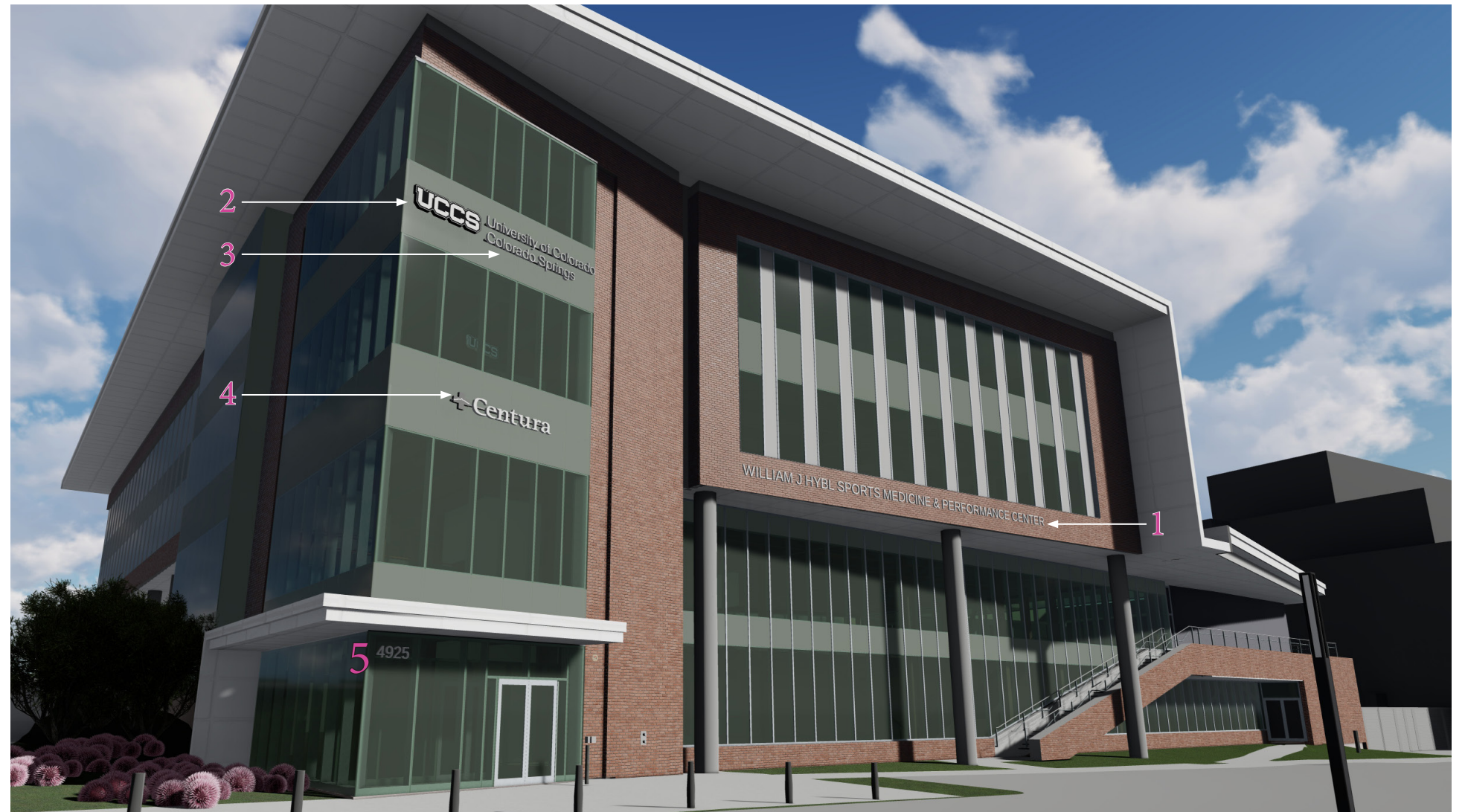
BRANDING BOARD SUBMITTAL - EXTERIOR SIGNAGE
NOVEMBER 8TH, 2019



EXTERIOR SIGNAGE - WEST

LETTERS

- 1 "William J. Hybl Sports Medicine & Performance Center" are 14" tall 5" deep internally illuminated channel letters. Face material to be a transparent white acrylic for illumination. Letter sides will be powder coated white to match metal panel on the building. Each letter will be individually mounted to avoid a raceway behind the text.
- 2 "UCCS" is an internally illuminated cabinet. Each letter will extrude out from the primary black box. The extruded letters have vinyl faces to glow at night. The letters are 21" tall.
- 3 "University of Colorado Colorado Springs" is a series of letters mounted on a raceway painted to match the spandrel glass behind. The raceway will be 1.5" tall, pending final engineering. Each capital letter will be a 12" tall 4" deep internally illuminated channel letter. Face material of each letter will be a transparent white acrylic for illumination. Letter sides will be powder coated white to match metal panel on the building.
- 4 "Centura" is a series of internally illuminated channel letters where capital letters and logo stand 16.75" tall. Face material of each letter will be a transparent white acrylic for illumination. Letter sides will be powder coated white to match metal panel on the building. Centura logo will be grey.
- 5 Building address identified with 10" tall white vinyl lettering mounted on the glass.



FONT

All UCCS related text will be Helvetica Neue to match campus standards.
Centura related text will be per Centura standards.

POWER SUPPLY

For cabinet mounted signages, power will be provided inside the cabinet. For individual lettering, controllers will be hidden in soffits or access panels inside the building.

SAMPLES

Samples of each letter type provided to the team for approval. Samples include material, colors, and illumination.

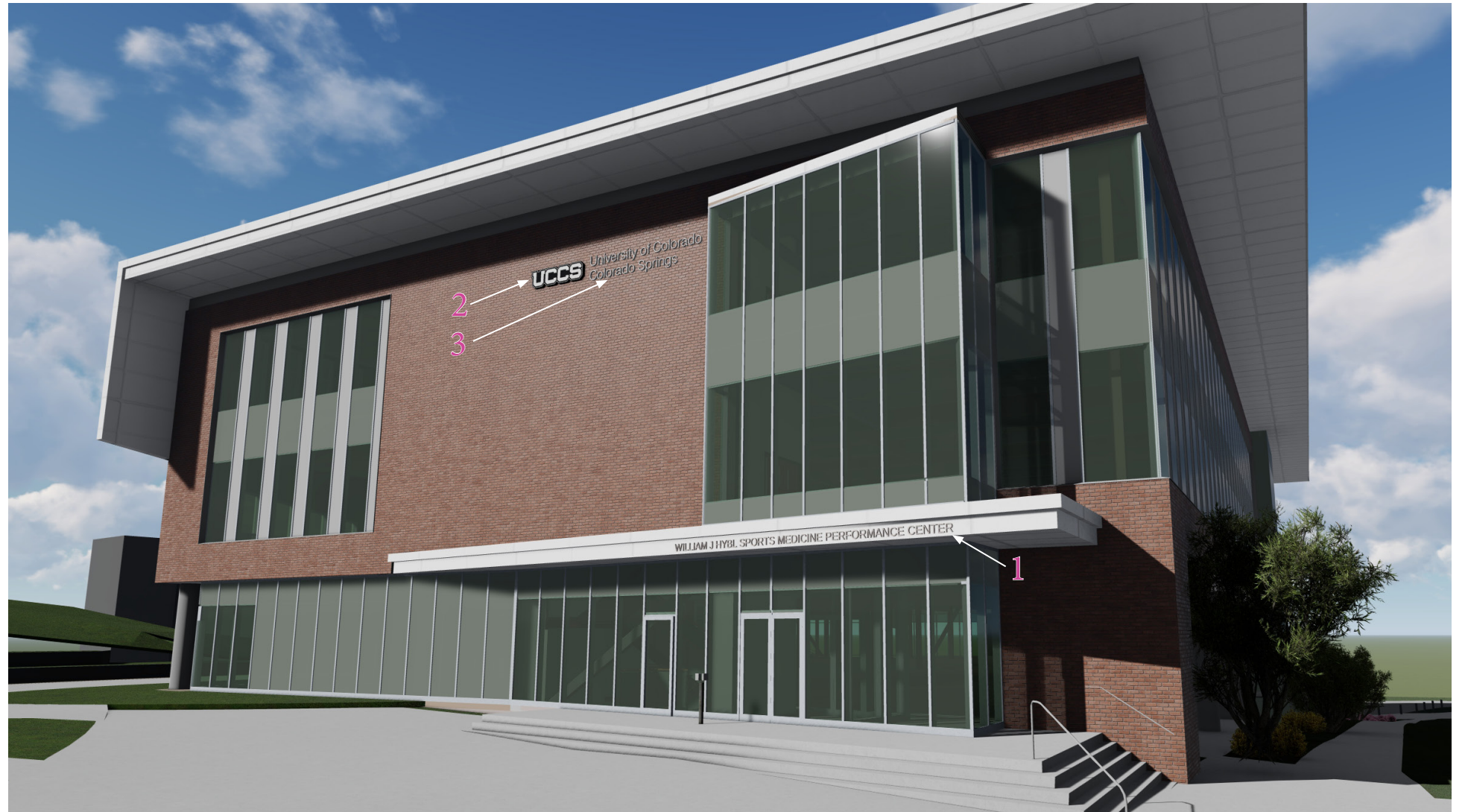
EXTERIOR SIGNAGE - EAST

LETTERS

1 "William J. Hybl Sports Medicine & Performance Center" are 10" tall 1/2" deep aluminum extrusions. Final grey color to be determined in field to create proper contrast between lettering and white metal panel.

2 "UCCS" is an internally illuminated cabinet. Each letter will extrude out from the primary black box. The extruded letters have vinyl faces to glow at night. Letters are 21" tall.

3 "University of Colorado Colorado Springs" are individually mounted letters. Each capital letter will be a 12" tall 4" deep internally illuminated channel letter. Face material of each letter will be a transparent white acrylic for illumination. Letter sides will be powder coated white to match metal panel on the building.



FONT

All text will be Helvetica Neue to match campus standards.

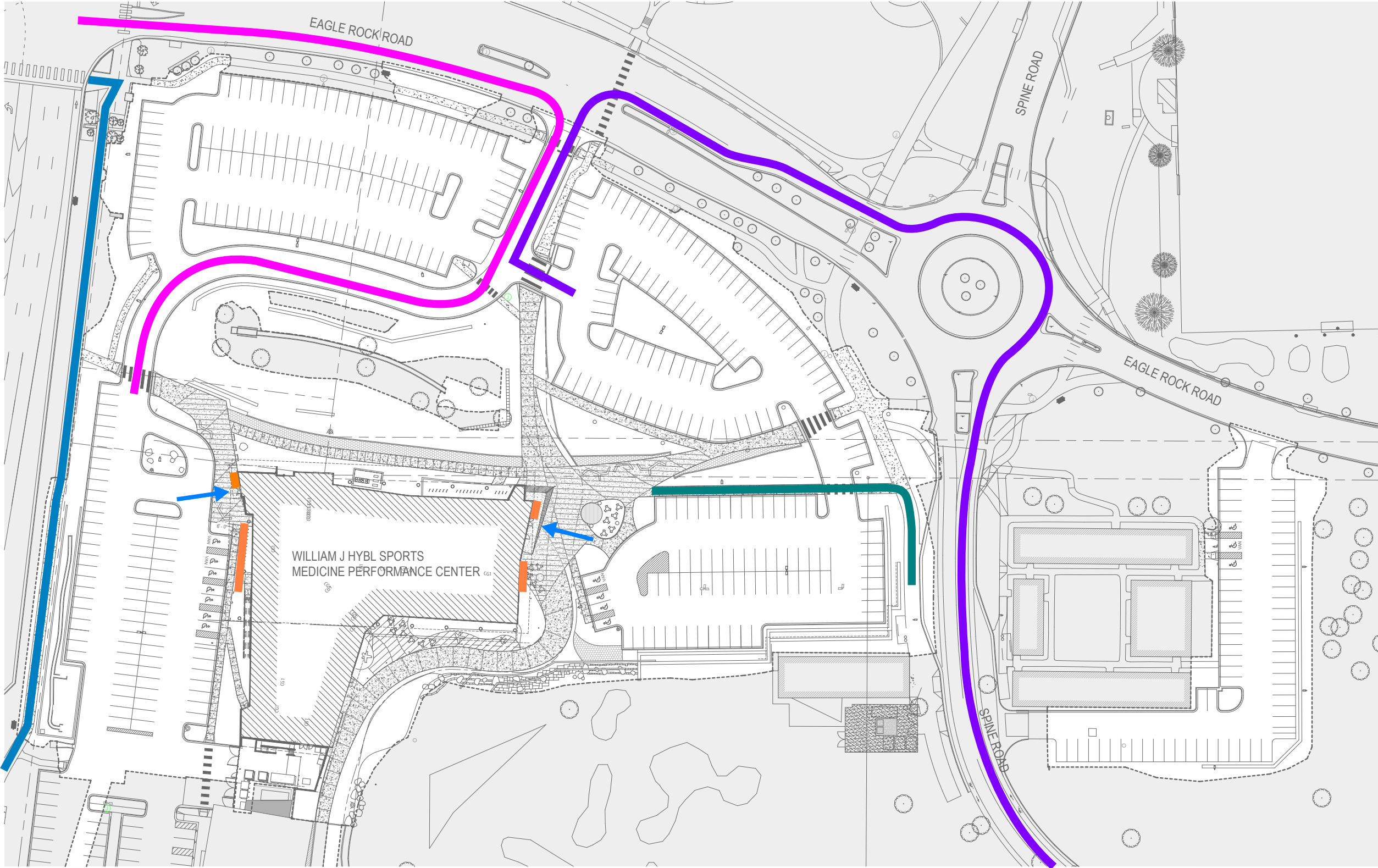
POWER SUPPLY

For cabinet mounted signages, power will be provided inside the cabinet. For individual lettering, controllers will be hidden in soffits or access panels inside the building.

SAMPLES

Samples of each letter type provided to the team for approval. Samples include material, colors, and illumination.

EXTERIOR SIGNAGE - SITE PLAN



PUBLIC PEDESTRIAN TRAFFIC



STUDENT PEDESTRIAN TRAFFIC



BUILDING ENTRY



PUBLIC VEHICULAR TRAFFIC

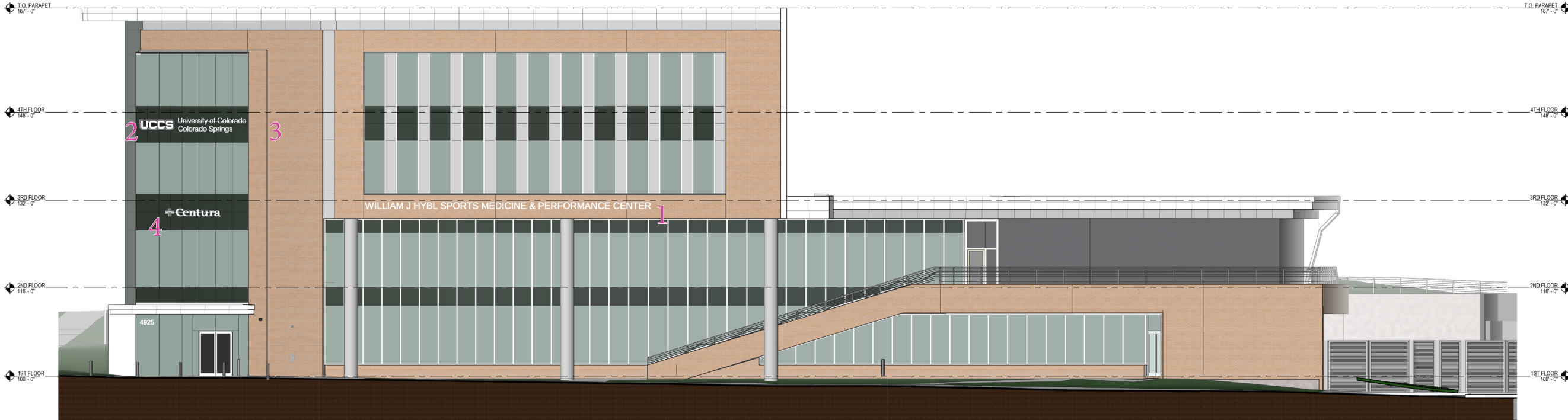


STUDENT VEHICULAR TRAFFIC

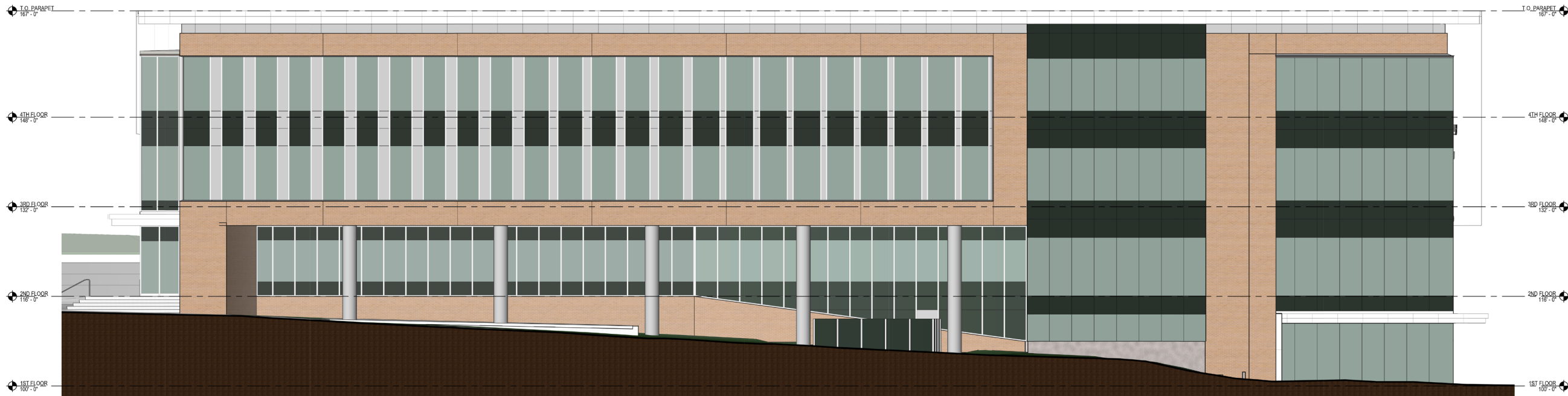


SIGNAGE LOCATION

EXTERIOR SIGNAGE - ELEVATIONS

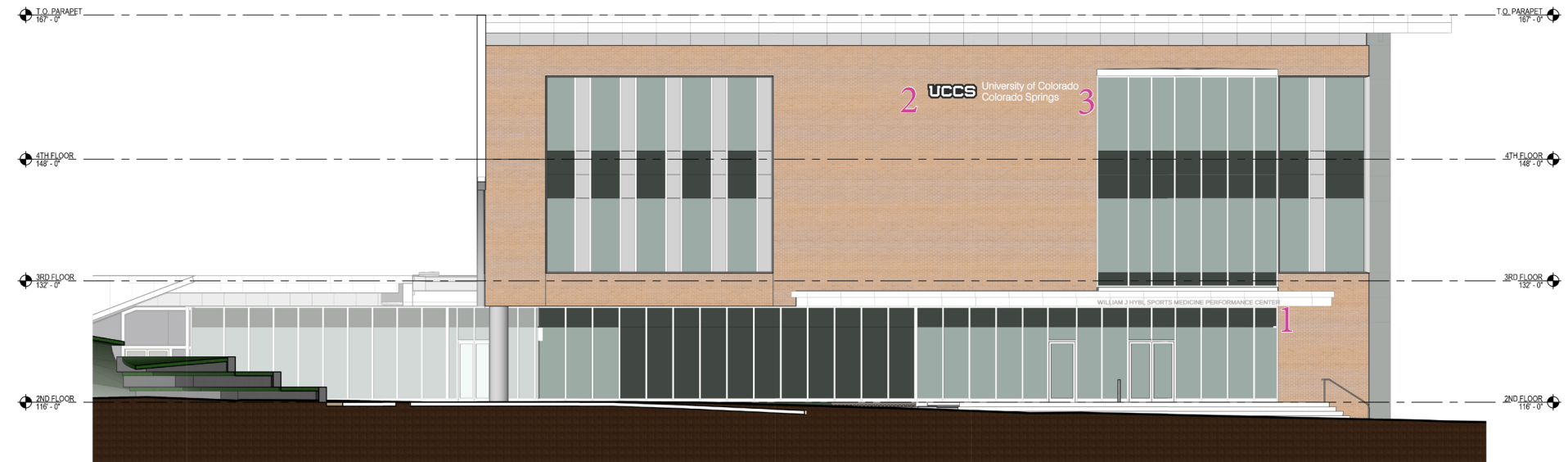


WEST SIGNAGE ELEVATION
1/8" = 1'-0"



NORTH SIGNAGE ELEVATION
1/8" = 1'-0"

EXTERIOR SIGNAGE - ELEVATIONS



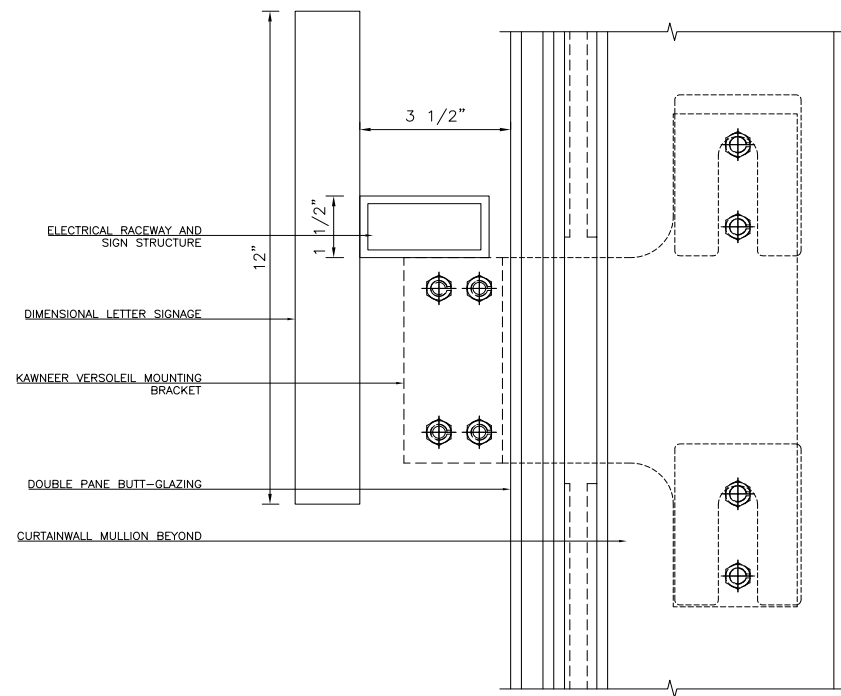
EAST SIGNAGE ELEVATION
1/8" = 1'-0"



SOUTH SIGNAGE ELEVATION
1/8" = 1'-0"

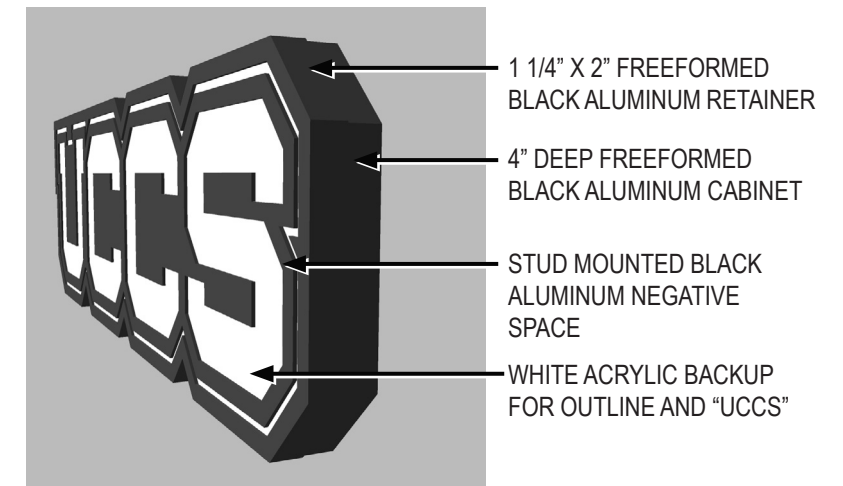
SIGN DETAILING

ATTACHMENT DETAIL AT GLAZING



DETAILING IMAGE OF "UCCS"

Backlit letter box to be 4" deep.



ATTACHMENT DETAIL AT MASONRY

