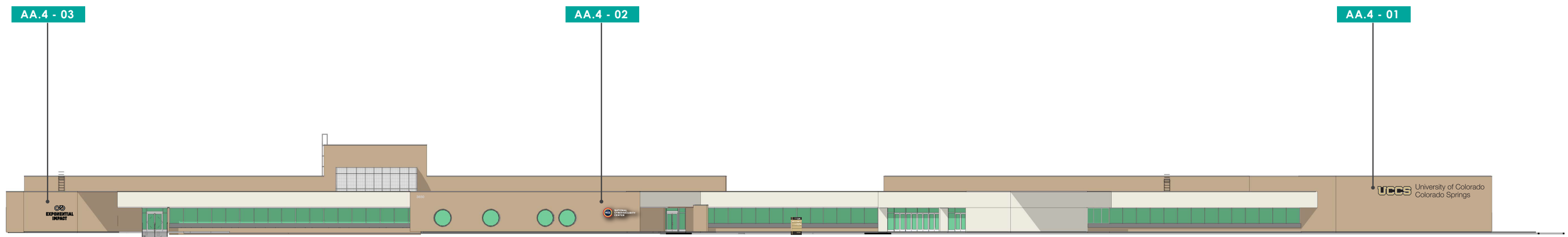




# Cybersecurity Building Wall Signage Review

13-February-2020





## UCSS CYBERSECURITY BUILDING - Overview

---

Scale - nts

---

UCSS Wayfinding  
18817

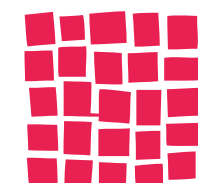
---

1420 Austin Bluffs Pkwy,  
Colorado Springs, CO 80918

---

06-Feb-2020

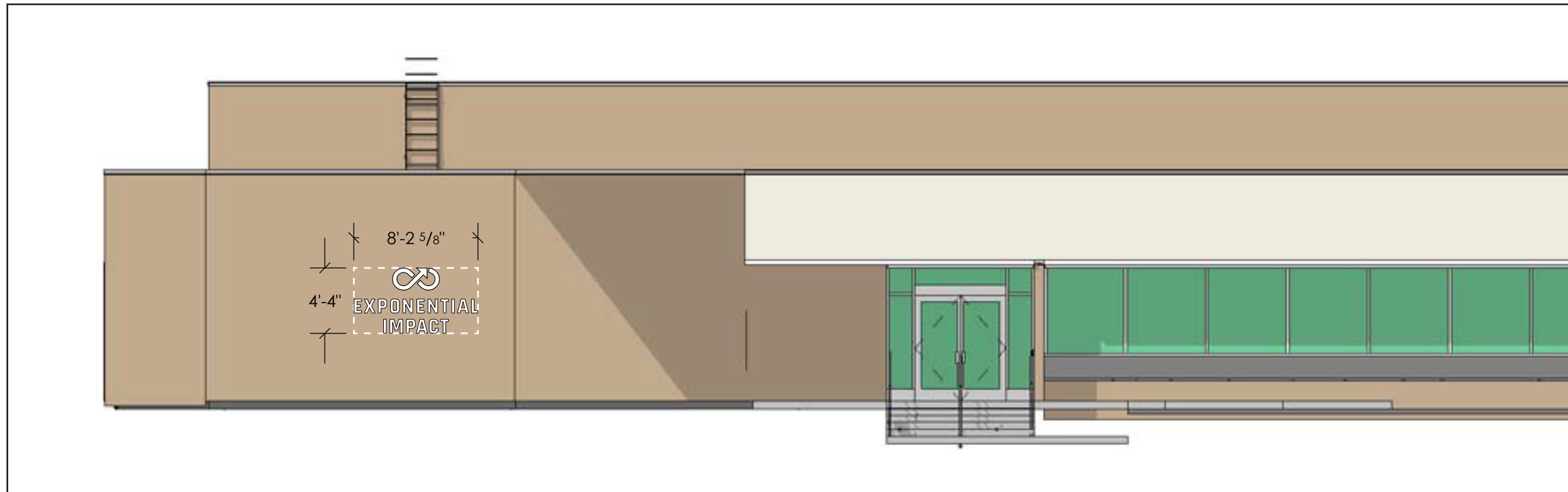
**X-2**



**DAVIS**  
PARTNERSHIP  
ARCHITECTS

**AA.4 - 03**  
**Cybersecurity Center**

- SIGN FABRICATION**
- Reverse Pan Channel Lettering halo illuminated
  - Formed aluminum housing
  - Pin-mounted



**AA.4 - 03**

**UCCS CYBERSECURITY BUILDING - Exponential Impact**

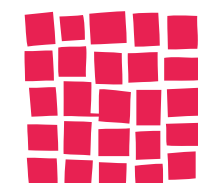
Scale 1/8" = 1' 0"

UCCS Wayfinding  
18817

1420 Austin Bluffs Pkwy,  
Colorado Springs, CO 80918

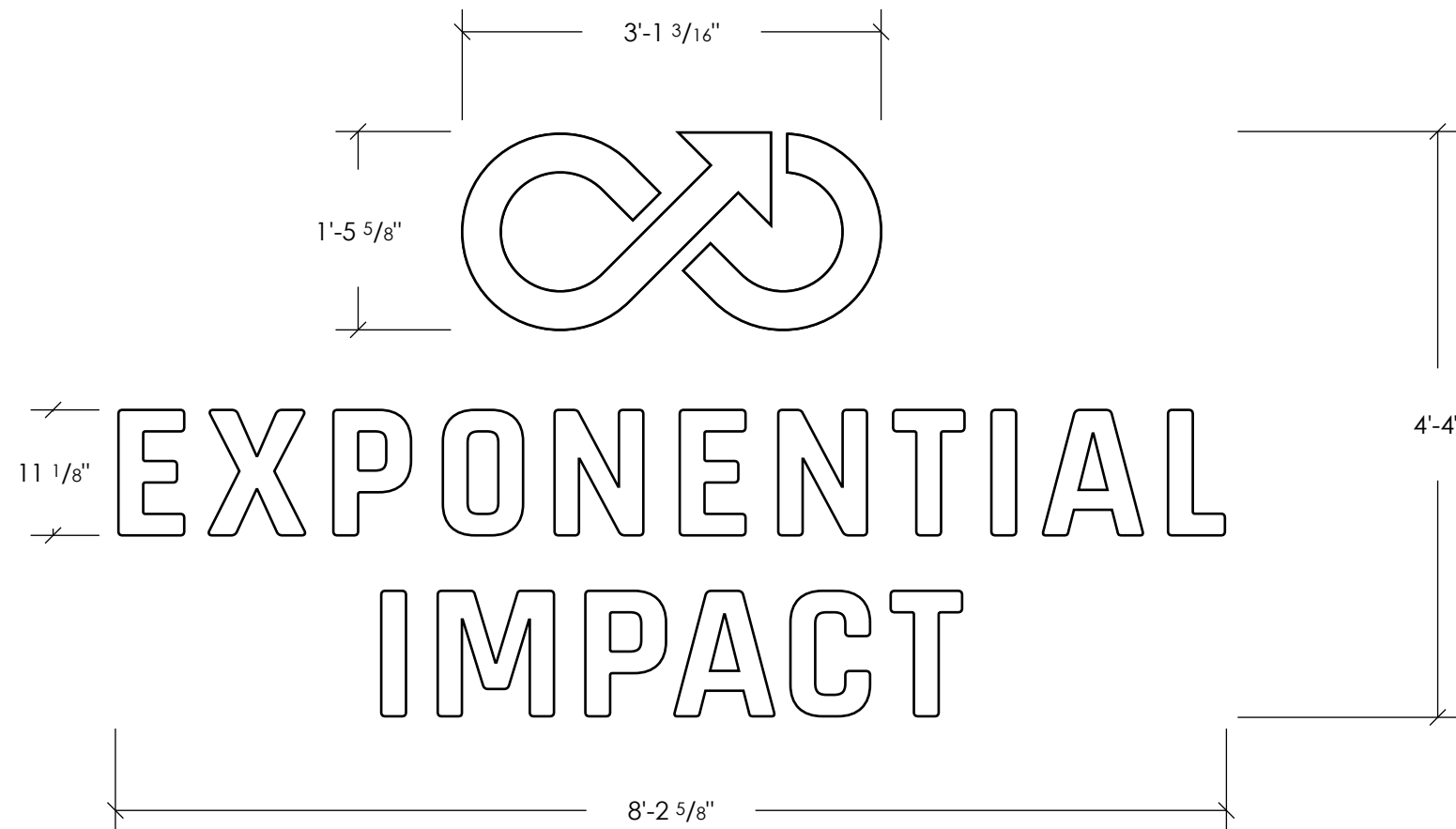
06-Feb-2020

**X-3**



**DAVIS**  
PARTNERSHIP  
ARCHITECTS

**AA.4 - 03**  
**Cybersecurity Center**



**SIGN FABRICATION**  
-Reverse Pan Channel Lettering halo illuminated  
-Formed aluminum housing  
-Pin-mounted

**SIGNAGE AREA**  
36 sq/ft

**AA.4 - 03**

**UCCS CYBERSECURITY BUILDING - Exponential Impact**

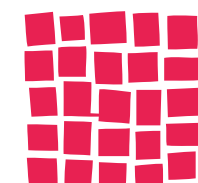
Scale 3/4" = 1' 0"

UCCS Wayfinding  
18817

1420 Austin Bluffs Pkwy,  
Colorado Springs, CO 80918

06-Feb-2020

**X-4**



**DAVIS**  
PARTNERSHIP  
ARCHITECTS

# AA.4 - 02 Cybersecurity Center

## SIGN FABRICATION

- Reverse Pan Channel Lettering halo illuminated
- Formed aluminum housing
- Pin-mounted



AA.4 - 02

## UCCS CYBERSECURITY BUILDING - NCC Signage

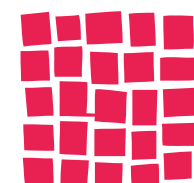
Scale 1/8" = 1' 0"

UCCS Wayfinding  
18817

1420 Austin Bluffs Pkwy,  
Colorado Springs, CO 80918

06-Feb-2020

**X-5**



**DAVIS**  
PARTNERSHIP  
ARCHITECTS

**AA.4 - 02**  
**Cybersecurity Center**



**SIGN FABRICATION**  
-Reverse Pan Channel Lettering halo illuminated  
-Formed aluminum housing  
-Pin-mounted

**SIGNAGE AREA**  
50.0 sq/ft

**UCCS CYBERSECURITY BUILDING - NCC Signage**

Scale 3/4" = 1' 0"

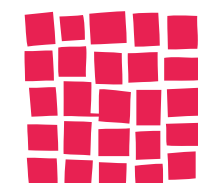
**AA.4 - 02**

UCCS Wayfinding  
18817

1420 Austin Bluffs Pkwy,  
Colorado Springs, CO 80918

06-Feb-2020

**X-6**

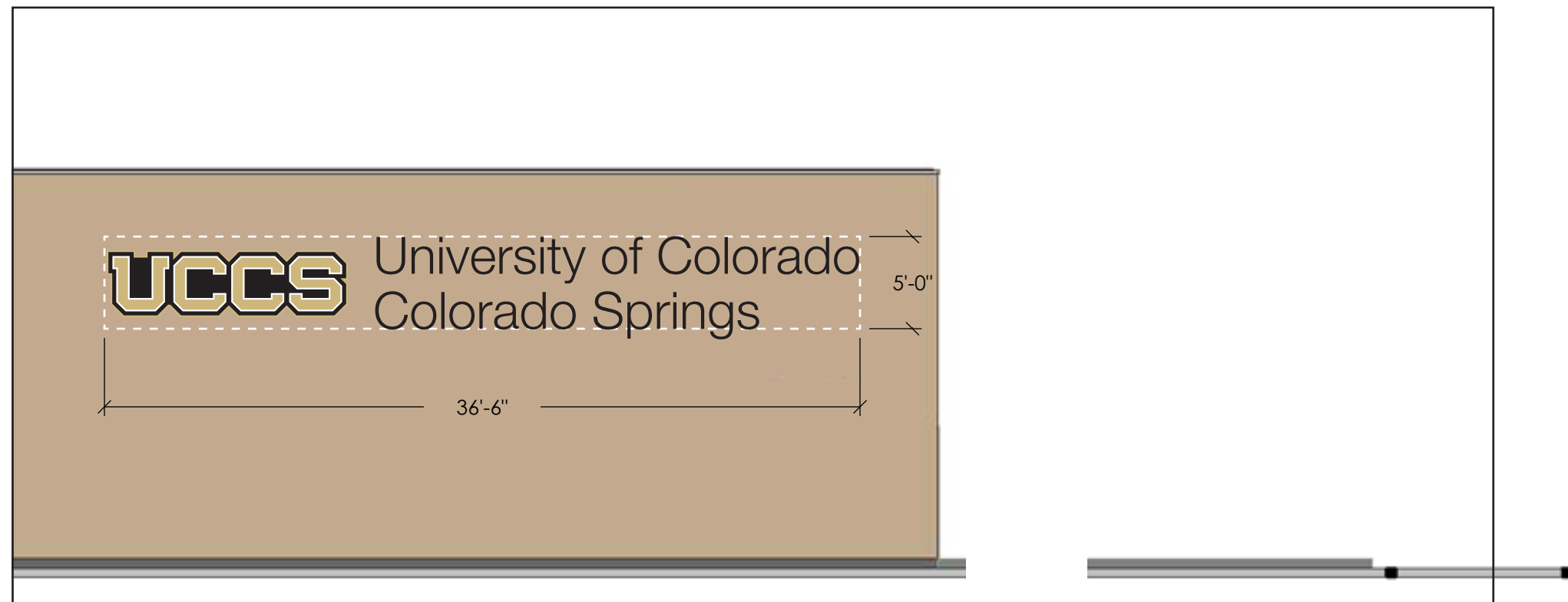


**DAVIS**  
PARTNERSHIP  
ARCHITECTS

# AA.4 - 01 Cybersecurity Center

## SIGN FABRICATION

- Reverse Pan Channel Lettering halo illuminated
- Formed aluminum housing
- Pin-mounted



## UCCS CYBERSECURITY BUILDING - UCCS Logo

Scale 1/8" = 1' 0"

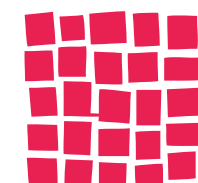
AA.4 - 01

UCCS Wayfinding  
18817

1420 Austin Bluffs Pkwy,  
Colorado Springs, CO 80918

06-Feb-2020

X-7



DAVIS  
PARTNERSHIP  
ARCHITECTS

# AA.4 - 01 Cybersecurity Center

## SIGN FABRICATION

- Reverse Pan Channel Lettering halo illuminated
- Formed aluminum housing
- Pin-mounted

## SIGNAGE AREA

205 sq/ft



## UCCS CYBERSECURITY BUILDING - UCCS Logo

Scale 1/4" = 1' 0"

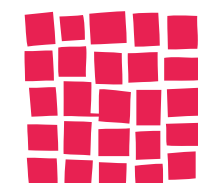
AA.4 - 01

UCCS Wayfinding  
18817

1420 Austin Bluffs Pkwy,  
Colorado Springs, CO 80918

06-Feb-2020

X-8



DAVIS  
PARTNERSHIP  
ARCHITECTS