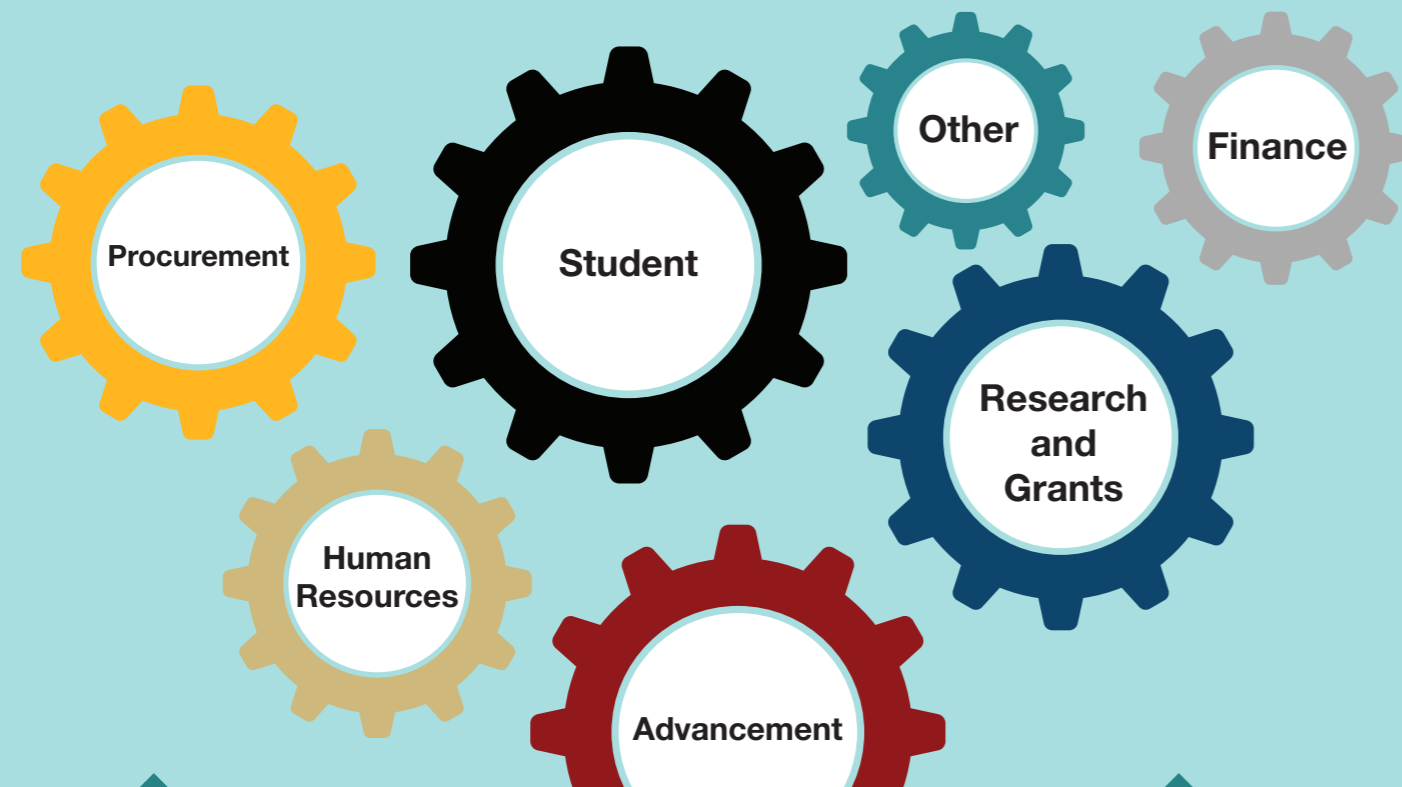


Delivering Data and Business Intelligence to CU



The UIS Data and Business Intelligence team provides University of Colorado faculty and staff with information at their fingertips. This information helps CU faculty and staff make informed decisions, retain students, conduct research, save money, raise money and more.

In delivering easily accessible information for analysis and reporting, data is sourced from more than a dozen major CU systems, staged it for uniformity, accuracy and consistency, and transformed data into reporting tables loaded to the Central Information Warehouse (CIW).

In the CIW, data and tables are grouped by functional area for use in data marts. A data mart delivers condensed, focused data relevant to a specific business function or group. Most users view data and information through CU-Data's reports or integration feeds.

