



University of Colorado  
Denver  
Office of Institutional Planning



**CU Denver Building - 4th Floor Meeting Spaces**  
Design Review Board - Concept Design (Revision 1) - September 14, 2021

# 8/17 CONCEPT DESIGN DRB COMMENT CLARIFICATIONS

---

## Site and Landscape

- Study experience from entry to the 4th floor
- Night lighting may provide identity
- Consider lush landscape, as shown in precedent image
- Provide detail of design and use of perimeter
- Continue to study raised pavers, consider wood
- Add detail of materiality, including structure, drainage

## Architecture

- Agree with direction of preferred layout
- Continue design of visual identity from below: size, placement, material, support...
  - More prominent or less prominent?*** Lighter structure, less columns, more elegant
- Balance furniture and layout for events and student use, including guest speaker
- Look for opportunity for student involvement in the design

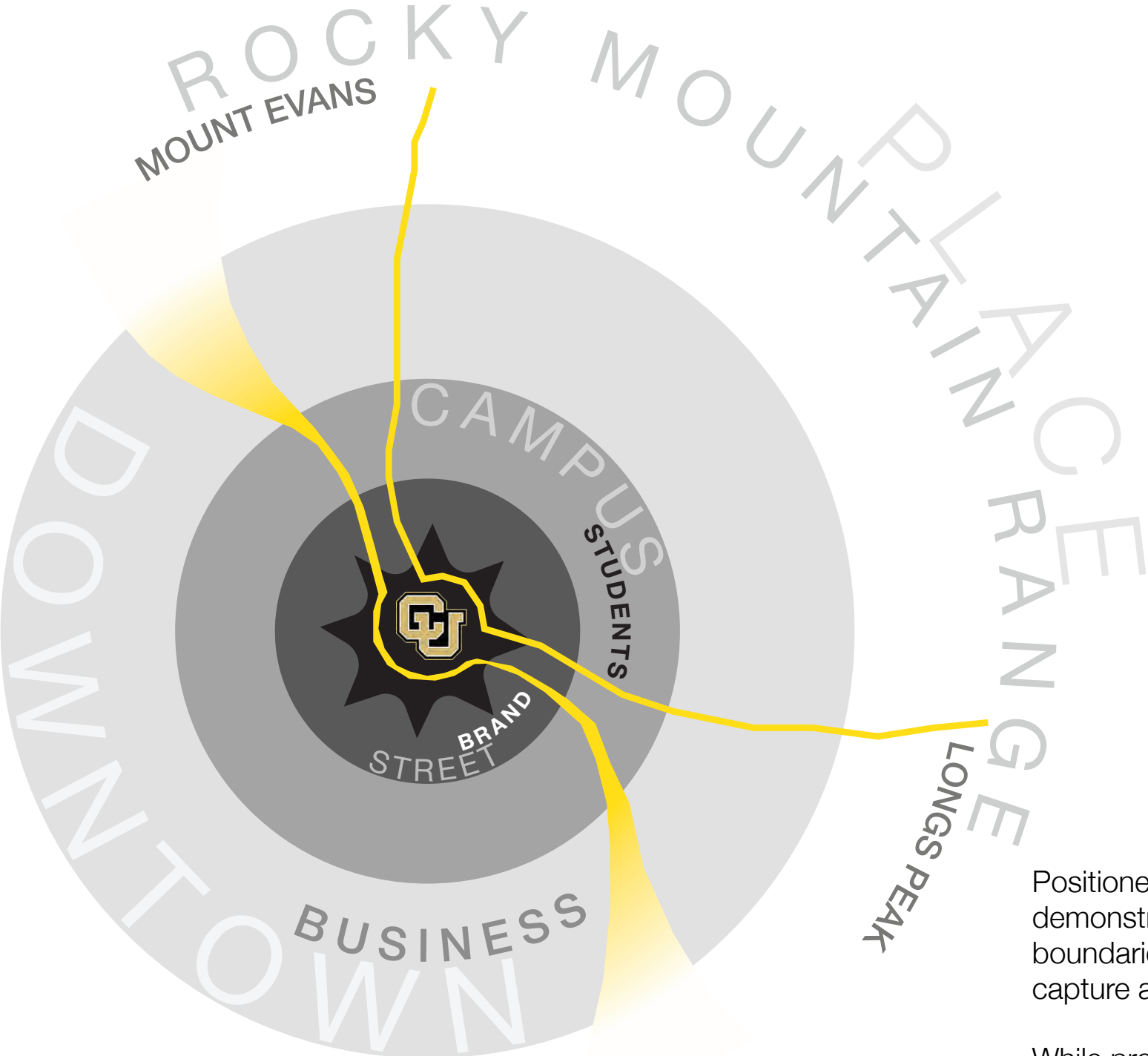
## Sustainability and Energy

- Document solar/thermal condition based on design direction
- Consider moveable shade to address low sun in the late afternoon
- Guests may prefer sun during primary events in May and September, not shade
- Consider radiant heat

## DRB Action

- Action tabled
- More cross sections, studies, and elevations
- Meet with Chancellor after Concept Design to DRB and before Schematic Design review
- Present Concept Design to student group representing the CAP

# CONCEPT NARRATIVE | A BOLD CONNECTION

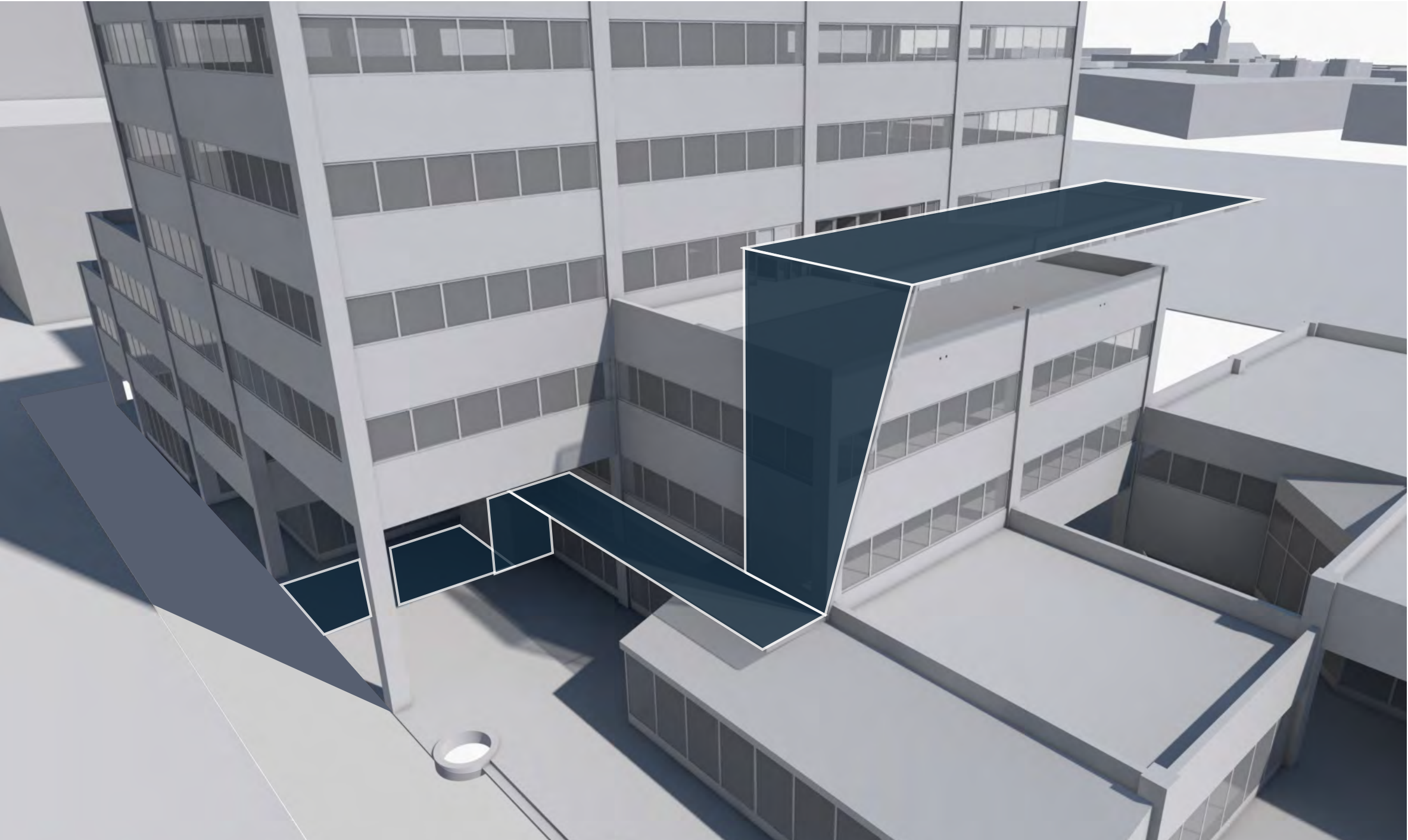
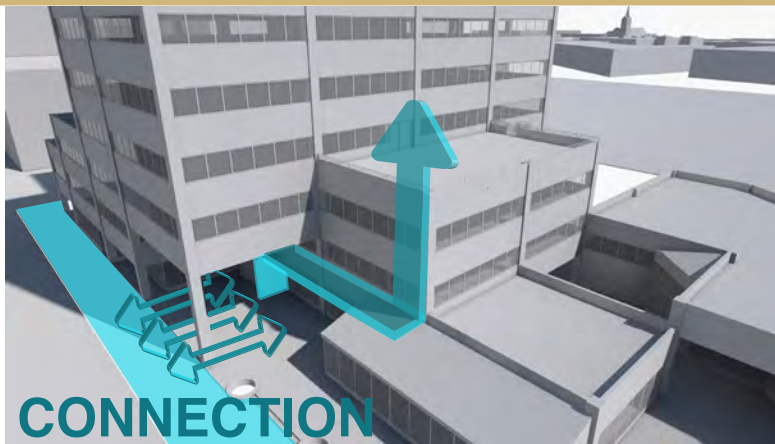
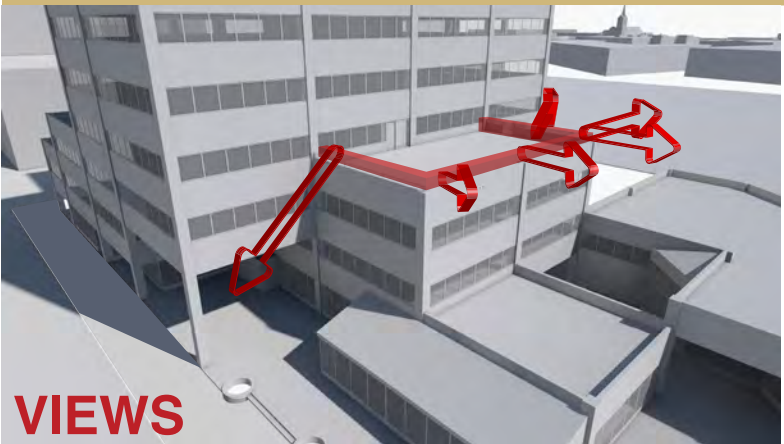


Positioned within a magnificent landscape and a vital downtown, the rooftop project is a demonstration of “CU in the City.” This urban project provides a connection to engage beyond the boundaries of rooftop and building, towards the campus, city, and landscape. It is positioned to capture attention, draw one in, and celebrate the experience from street to rooftop.

While providing purposeful shade for the comfort of occupants within, the canopy imparts a bold, innovative statement to draw attention to “a vibrant, open-access hub of intellectual and creative vigor with CU Denver at the center.” Movement in the structure engages visually at the ground plane, and activates an underutilized space for visitors and students above. The final expression includes the components that creates the link, a sense of belonging, human comfort, and opening to the views out. The structure provides opportunities to leverage place for fostering entrepreneurship, economic development, public-private partnerships, and transformative education.

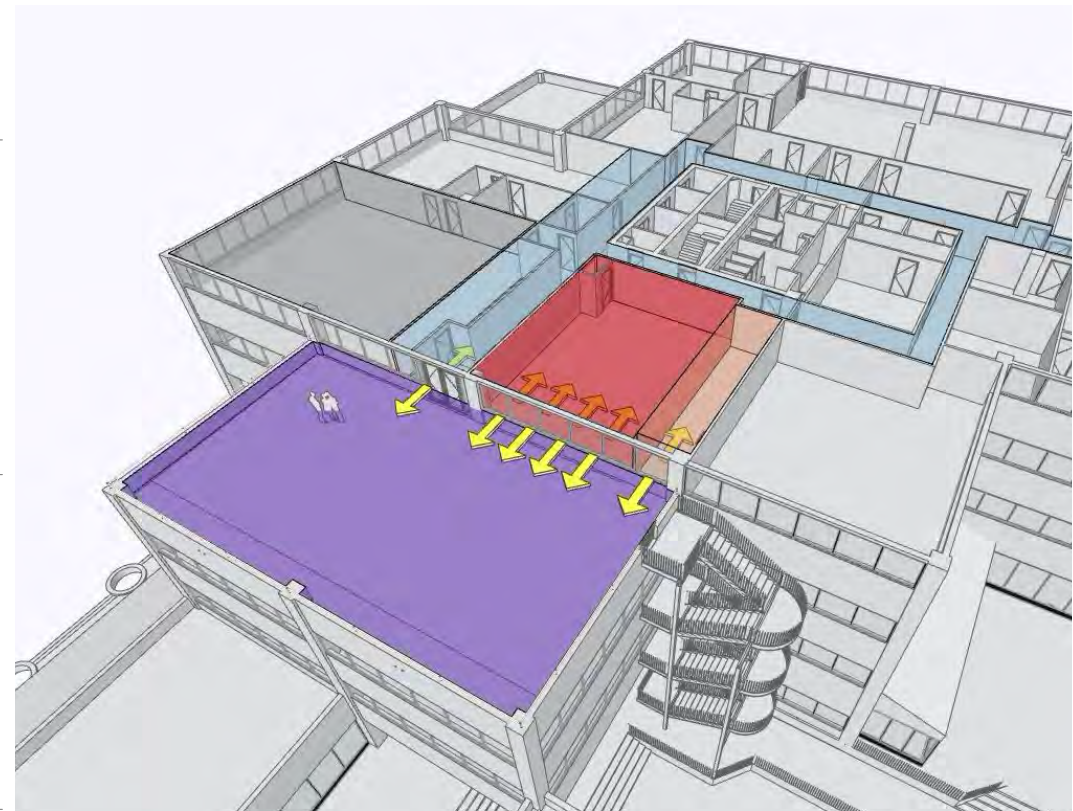


# DESIGN FRAMEWORK | GUIDING PRINCIPLES

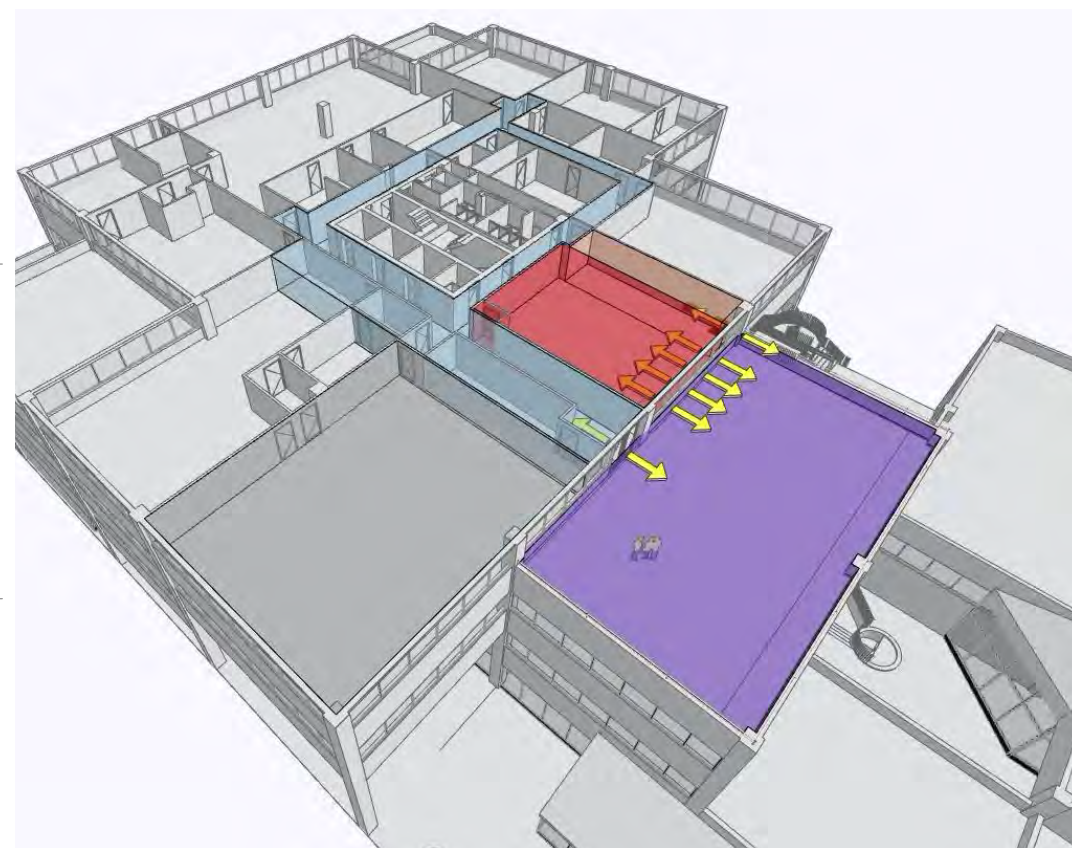




# PREFERRED LAYOUT



2 View 1 - Option 4  
SCALE: 1:106.67





# A BOLD STATEMENT

---



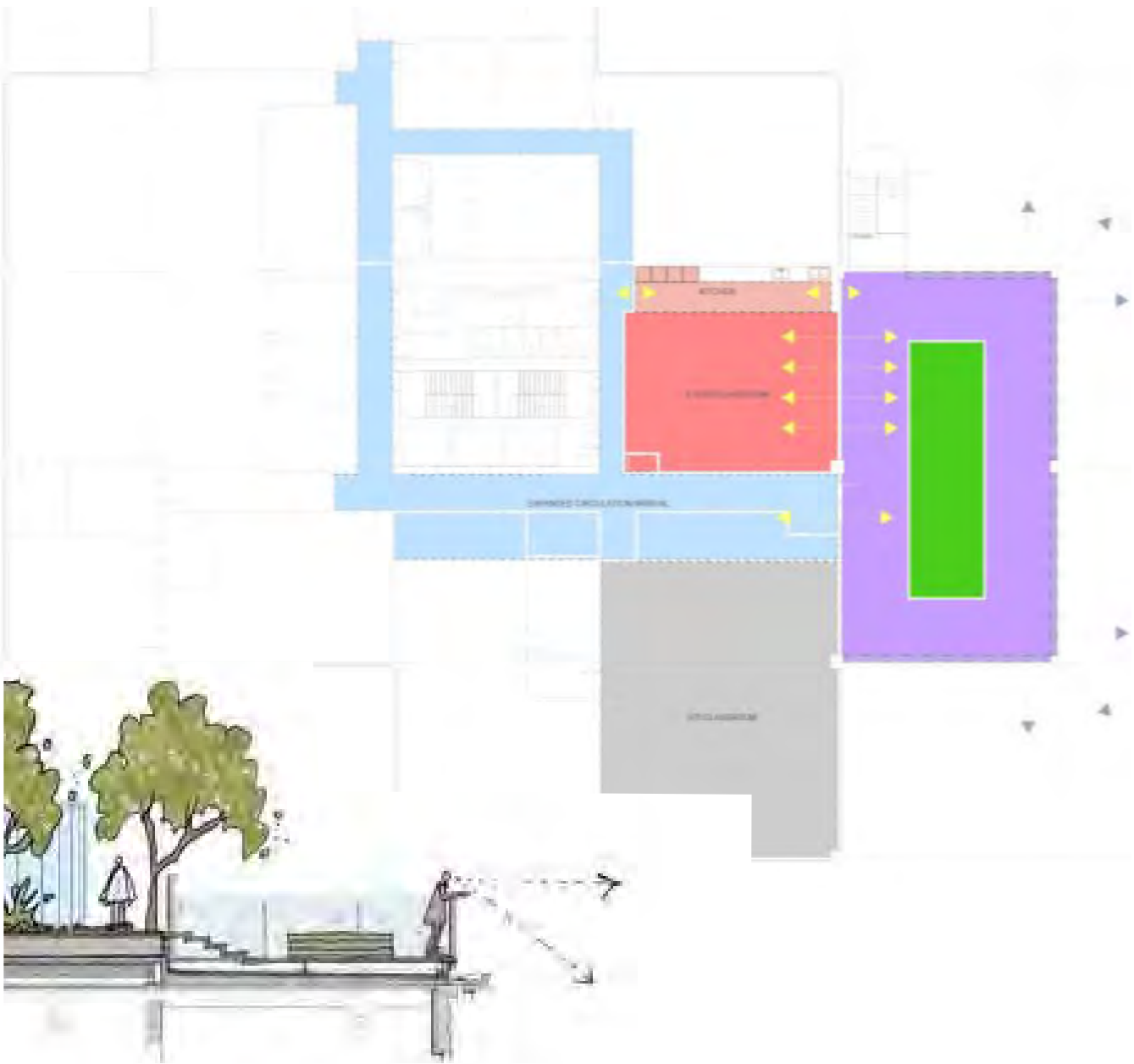


# SHADING MATERIAL STUDY | METAL SYSTEM





LANDSCAPE | FIELD





# ROOFTOP OPERATION | PATH TO END

