

April 10, 2020

# UNIVERSITY OF COLORADO DENVER

LYNX CROSSING RESIDENCE HALL  
RENOVATION

**hord | coplan | macht**



# AGENDA

Introductions

Project Introduction

Project Scope

Questions & Discussion



# INTRODUCTIONS



# PROJECT TEAM



**JERED MINTER**

CU Denver  
Campus Architect



**BEN BOHMANN**

CU Denver | Anschutz Medical Campus  
Project Manager



**GWEN GILLEY**

Hord Coplan Macht  
Principal in Charge



**JASON BENTLEY**

Hord Coplan Macht  
Project Manager





# PROJECT INTRODUCTION



# PROJECT INTRODUCTION

**Existing Building Renovation**

**250,775 GSF - Constructed 2006**

**4 Stories East, West and South Wings | 5 Stories at North Wing**

**230 Residential Suites | 511 Bedrooms | 722 Beds**

**Budget - \$2,967,000**

**CM|GC Delivery**

**Schedule**

**Three Bid Packages | Three Construction Phases**

**Construction – July 2020 through September 2021**





# CENTRAL LOCATION

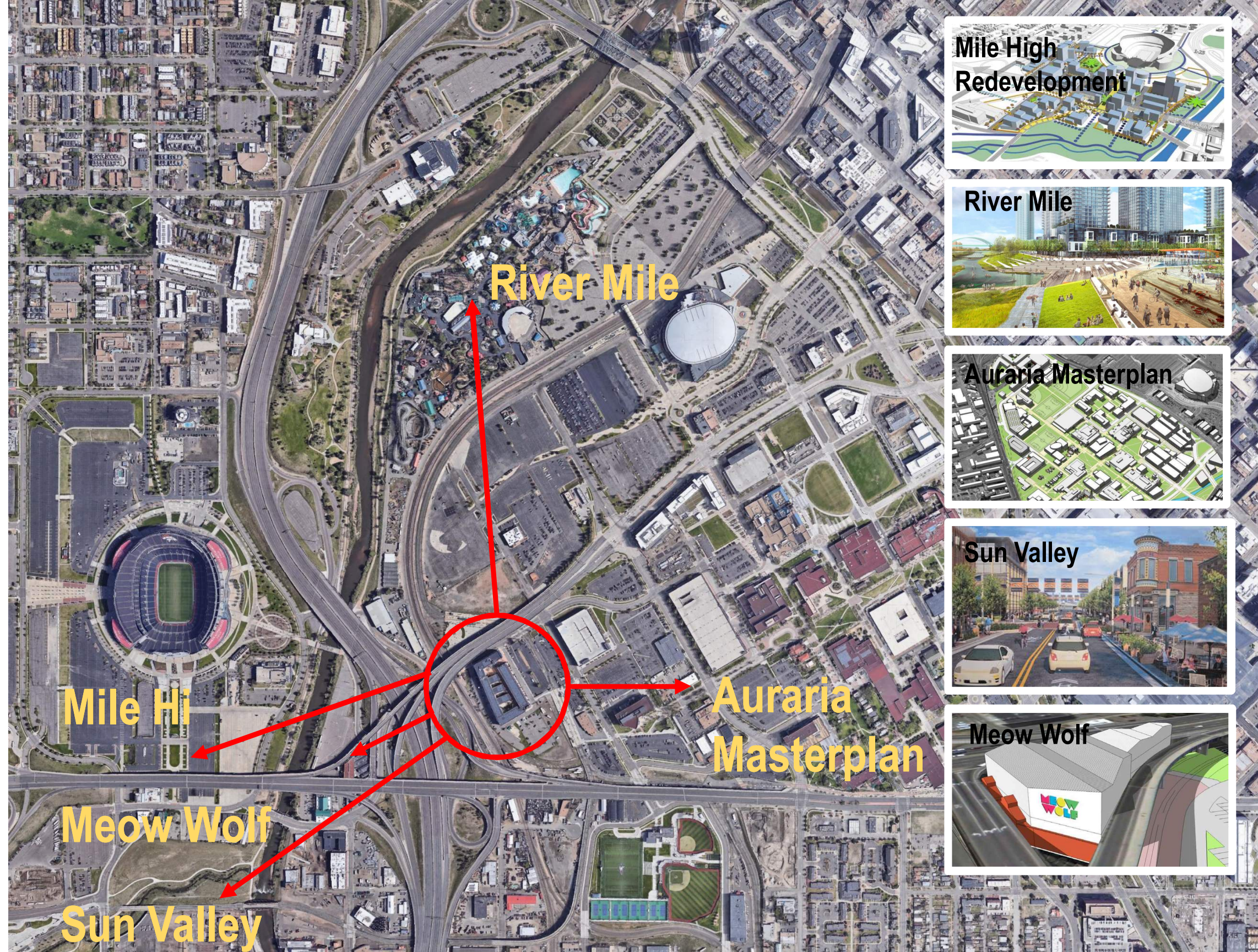


LYNX CROSSING





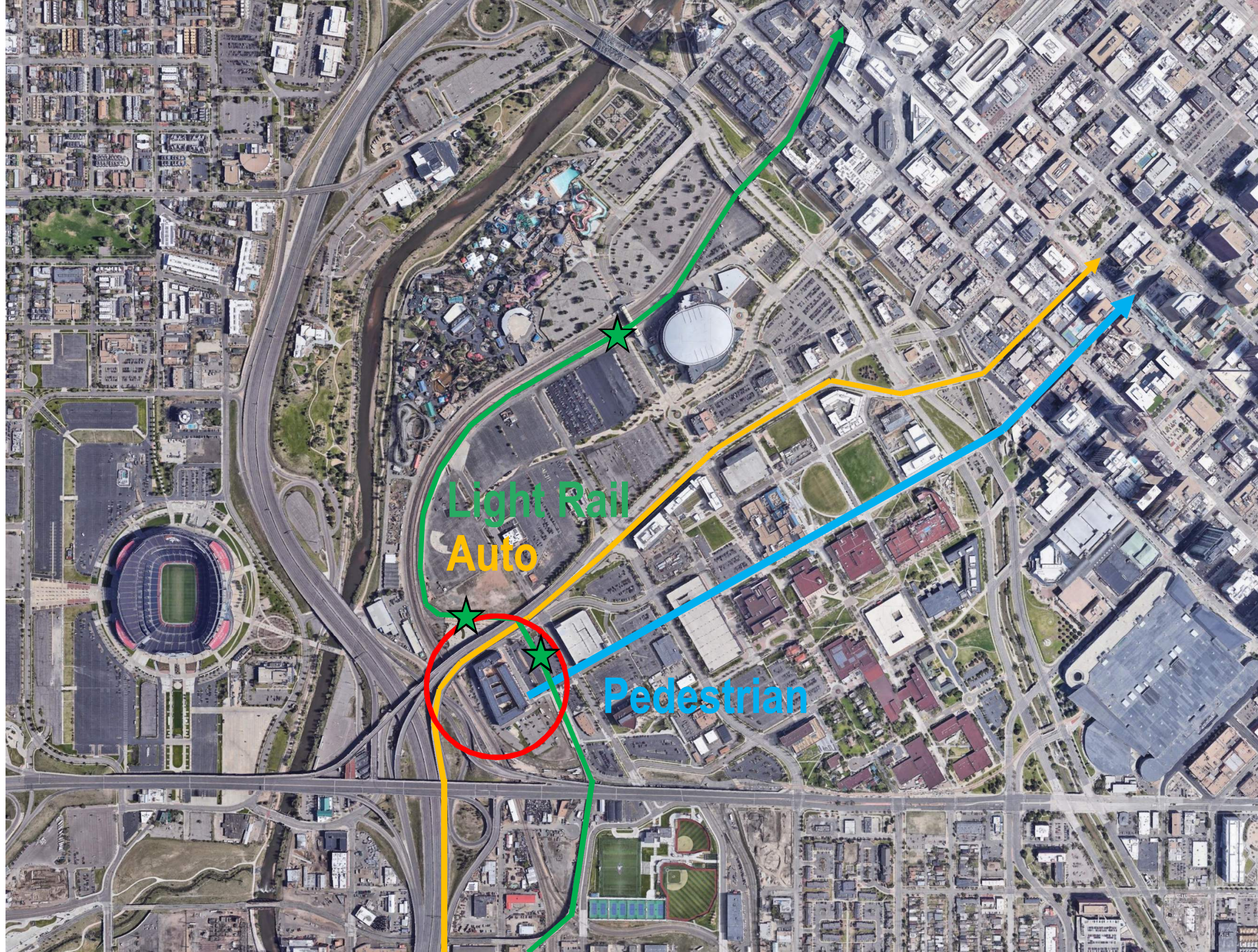
## SURROUNDING DEVELOPMENTS







# TRANSPORTATION LINKS





# PROJECT GOALS

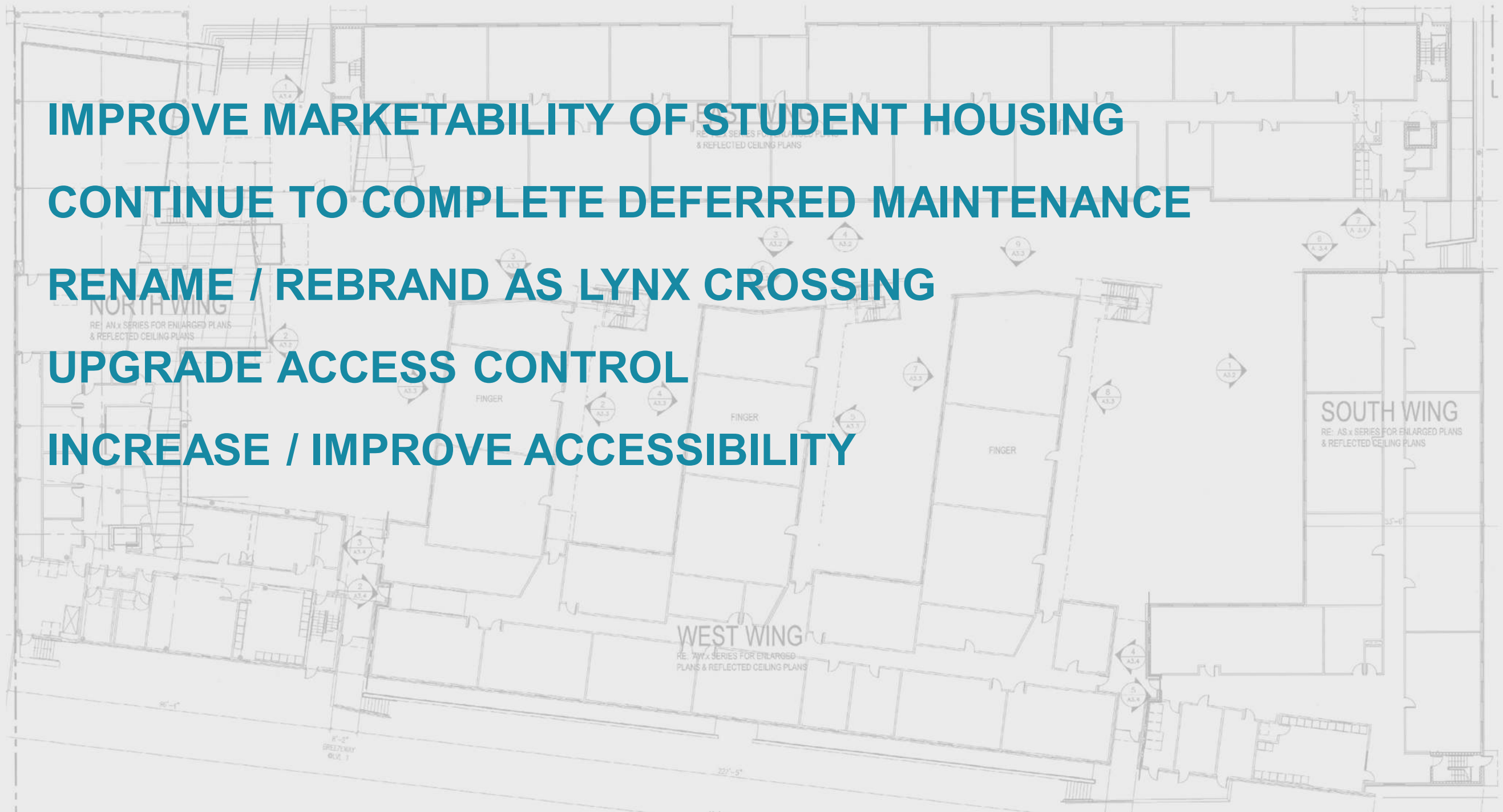
**IMPROVE MARKETABILITY OF STUDENT HOUSING**

**CONTINUE TO COMPLETE DEFERRED MAINTENANCE**

**RENAME / REBRAND AS LYNX CROSSING**

**UPGRADE ACCESS CONTROL**

**INCREASE / IMPROVE ACCESSIBILITY**







# PROJECT SCOPE



# INTERIOR PROJECT SCOPE

**Interior Finishes Refresh**

**Replace Residential Suite Kitchenettes**

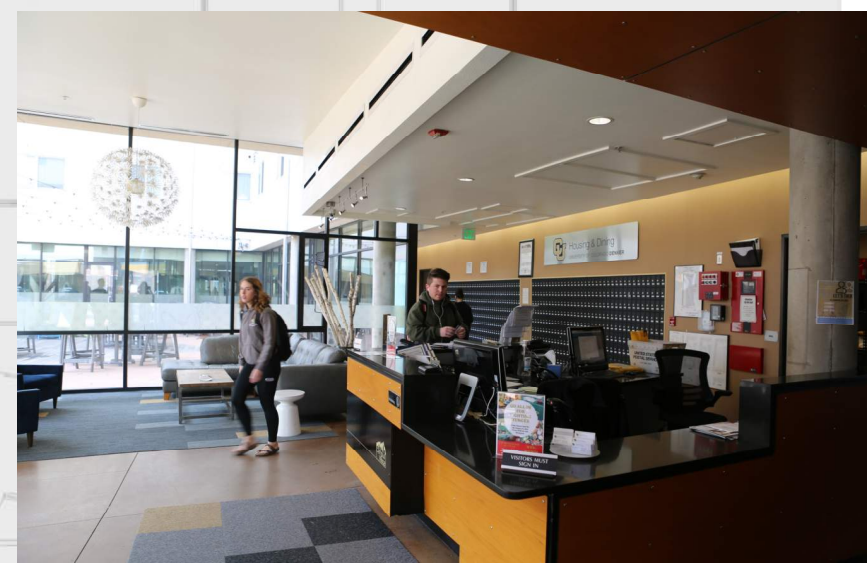
**Lobby Remodel**

**Replace Fire Alarm Panel / Add Detection**

**Security Card Access Door Hardware**

**Replace Damaged Suite Doors**

**Interior Signage & Branding**





# SITE CONTEXT



AURARIA PKWY

WALNUT STREET

PARKING  
GARAGE

ENTRY

LYNX  
CROSSING

4TH STREET

LIGHTRAIL STATION

LARIMER STREET

5TH STREET

7TH STREET

CURTIS STREET

COLFAX AVENUE

I-25 N ON RAMP  
I-25 S ON RAMP

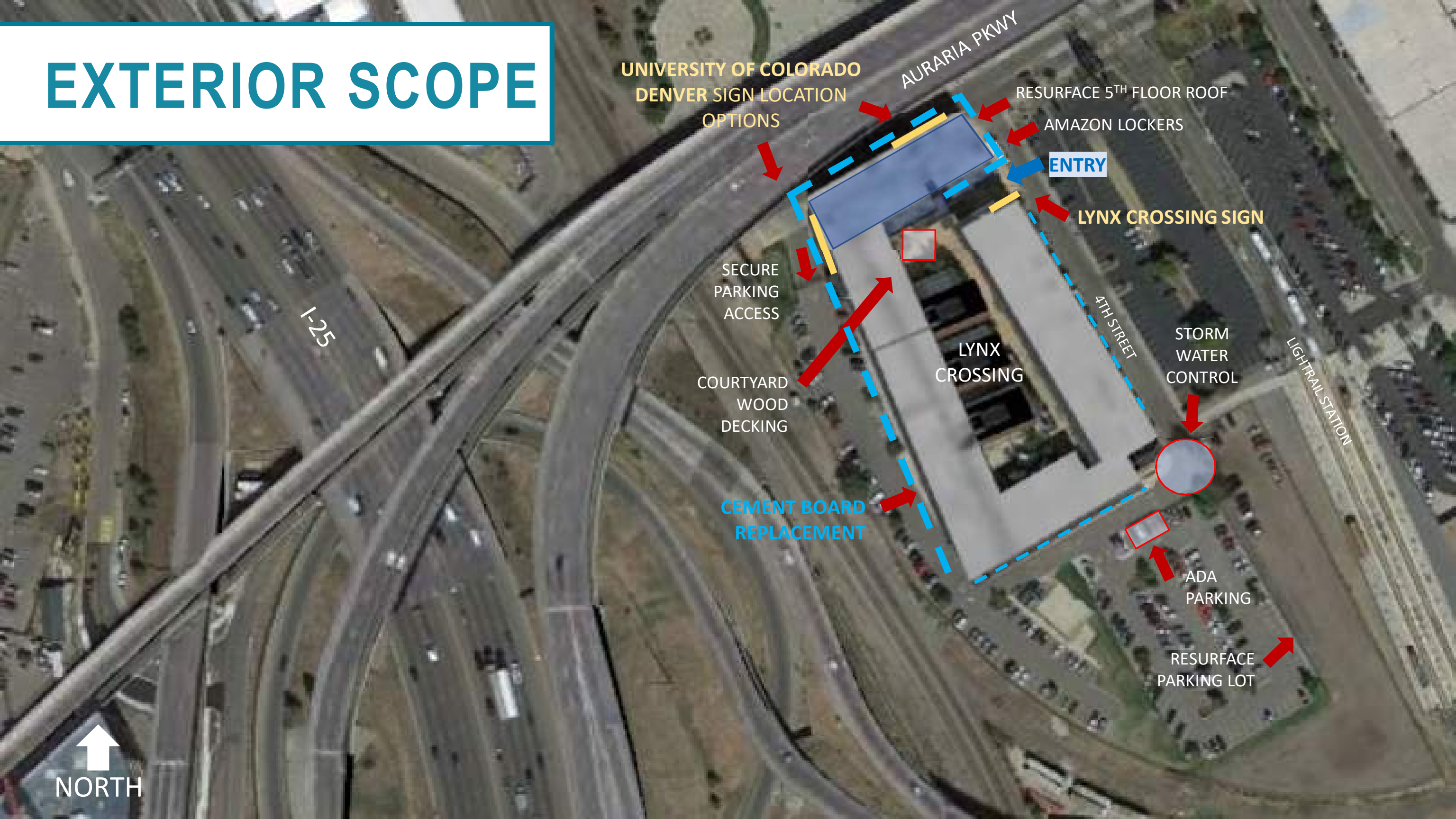
I-25

I-25





# EXTERIOR SCOPE



UNIVERSITY OF COLORADO  
DENVER SIGN LOCATION  
OPTIONS

AURARIA PKWY

RESURFACE 5<sup>TH</sup> FLOOR ROOF

AMAZON LOCKERS

ENTRY

LYNX CROSSING SIGN

SECURE  
PARKING  
ACCESS

COURTYARD  
WOOD  
DECKING

CEMENT BOARD  
REPLACEMENT

LYNX  
CROSSING

STORM  
WATER  
CONTROL

ADA  
PARKING

RESURFACE  
PARKING LOT

LIGHTRAIL STATION

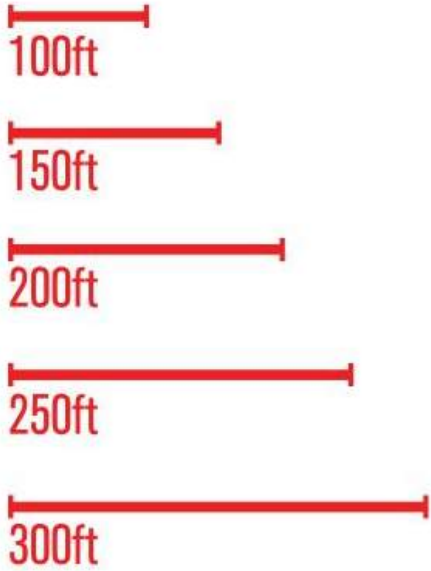
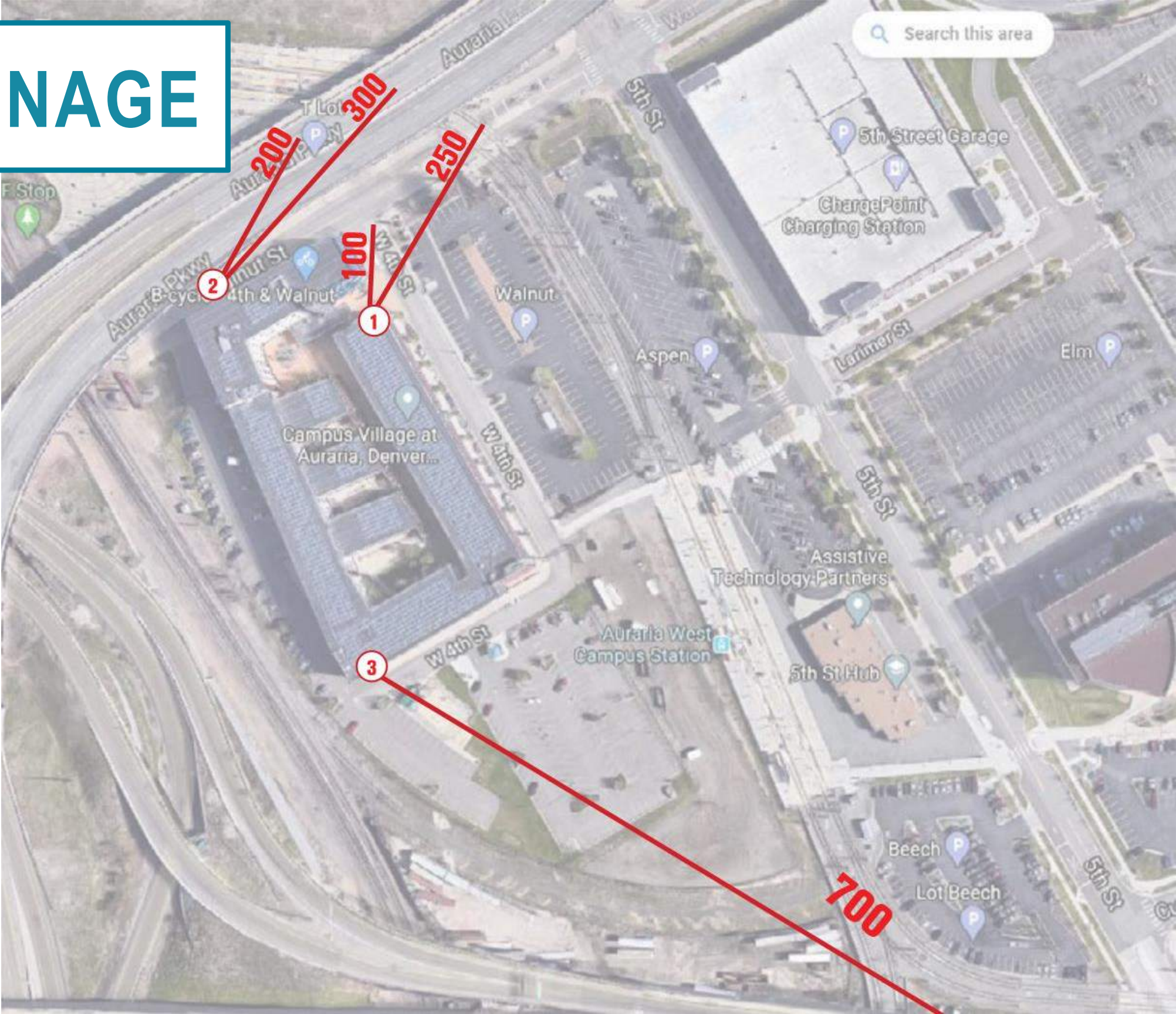
4TH STREET

I-25





# SIGNAGE



DISTANCES	LETTER HEIGHT
100ft	12"
150ft	15"
200ft	20"
250ft	25"
300ft	30"
700ft	70"



# SIGNAGE – LYNX CROSSING



Replace 'CAMPUS VILLAGE' sign with 'LYNX CROSSING' Sign

Potentially replace temporary 'CAMPUS VILLAGE' Banner



Potentially replace 'CAMPUS VILLAGE' Window Graphic adjacent to Main Entry



# SIGNAGE - CU DENVER



University of Colorado **Denver**





# SIGNAGE – NORTH ELEVATION



‘CU UNIVERSITY OF COLORADO DENVER’ Signage – Analyze location options

View from Auraria Parkway (on-ramp to I-25)



# SIGNAGE –WEST ELEVATION



‘CU UNIVERSITY OF COLORADO DENVER’ Signage – Analyze location options

View from Auraria Parkway (off-ramp from I-25 northbound)



# SIGNAGE – SOUTH ELEVATION



Potentially replace temporary 'CAMPUS VILLAGE' Banner

View from Colfax (on-ramp to I-25)





# CEMENT BOARD REPLACEMENT



Cement board panels at east elevation

Cement board panels at West elevation





# ADA SIGNAGE & PARKING



Provide ADA parking spaces & signage



Re-sign as "Accessible Route"



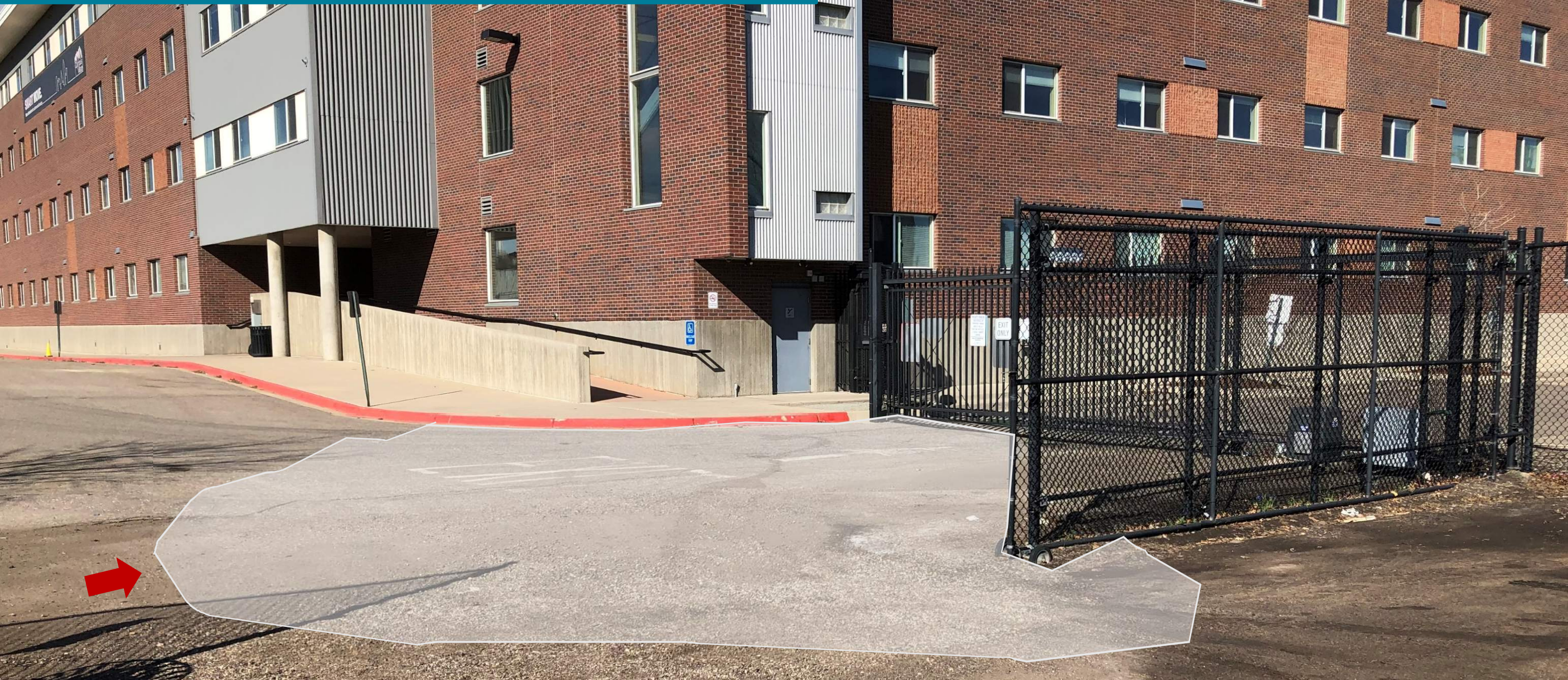
# COURTYARD PAVEMENT



Replace wood decking



# STORMWATER CONTROL



Improve stormwater drainage



# COURTYARD CANOPY



Potential replacement of weathered wood trim at courtyard canopy





# AMAZON LOCKER LOCATION

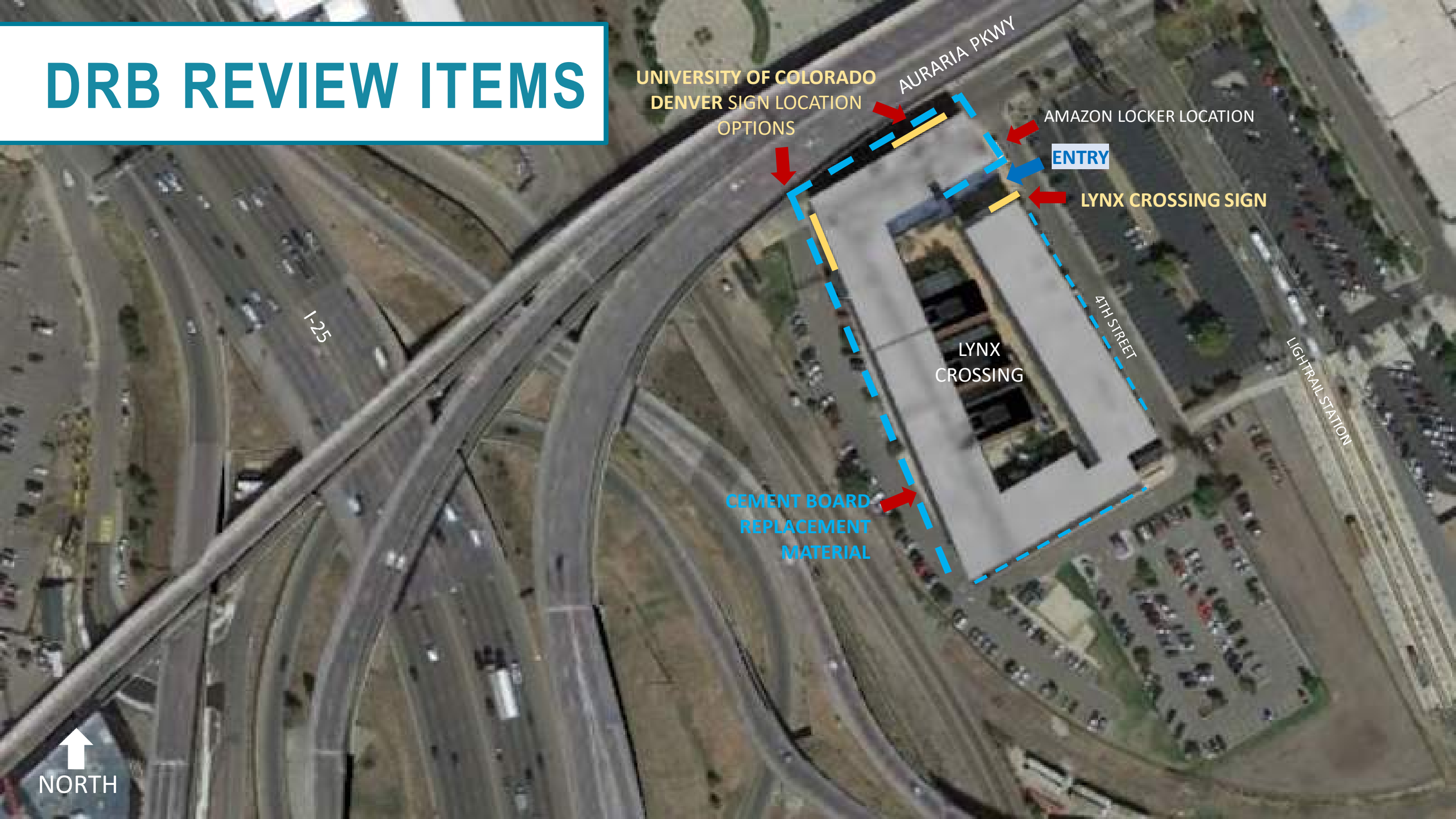


Potential Amazon locker location outside secure area





# DRB REVIEW ITEMS



UNIVERSITY OF COLORADO  
DENVER SIGN LOCATION  
OPTIONS

AURARIA PKWY

AMAZON LOCKER LOCATION

ENTRY

LYNX CROSSING SIGN

4TH STREET

LYNX  
CROSSING

LIGHT RAIL STATION

CEMENT BOARD  
REPLACEMENT  
MATERIAL

NORTH



# **QUESTIONS AND DISCUSSION**